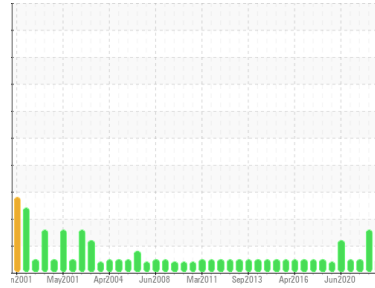




OIL ANALYSIS REPORT

Sample Rating Trend



NORMAL



Machine Id
BDE - UNIT 2 TURBINE BEARING (S/N 59082)

Component
Bearing

Fluid
PETRO CANADA TURBOFLO R&O 46 (--- LTR)

DIAGNOSIS

Recommendation

Resample at the next service interval to monitor.
NOTE: Please provide information regarding reservoir capacity, filter type and micron rating with next sample.

Wear

All component wear rates are normal.

Contamination

The system cleanliness is acceptable for your target ISO 4406 cleanliness code. The system and fluid cleanliness is acceptable.

Fluid Condition

The AN level is acceptable for this fluid. The condition of the oil is suitable for further service.

SAMPLE INFORMATION

	method	limit/base	current	history1	history2
Sample Number	Client Info		WC0863086	WC0524848	WC0464344
Sample Date	Client Info		29 Feb 2024	14 Mar 2022	02 Dec 2021
Machine Age	hrs	Client Info	76764	0	0
Oil Age	hrs	Client Info	67730	0	0
Oil Changed		Client Info	N/A	N/A	N/A
Sample Status			NORMAL	ABNORMAL	NORMAL

CONTAMINATION

	method	limit/base	current	history1	history2
Water	WC Method	>2	NEG	NEG	NEG

WEAR METALS

	method	limit/base	current	history1	history2
PQ	ASTM D8184*		0	0	0
Iron	ppm	ASTM D5185(m) >20	0	<1	0
Chromium	ppm	ASTM D5185(m) >20	0	0	0
Nickel	ppm	ASTM D5185(m) >20	0	<1	<1
Titanium	ppm	ASTM D5185(m)	0	0	0
Silver	ppm	ASTM D5185(m)	0	0	<1
Aluminum	ppm	ASTM D5185(m) >20	0	0	<1
Lead	ppm	ASTM D5185(m) >20	1	1	<1
Copper	ppm	ASTM D5185(m) >20	<1	<1	<1
Tin	ppm	ASTM D5185(m) >20	0	0	<1
Antimony	ppm	ASTM D5185(m)	0	<1	0
Vanadium	ppm	ASTM D5185(m)	0	0	0
Beryllium	ppm	ASTM D5185(m)	0	0	0
Cadmium	ppm	ASTM D5185(m)	0	0	0

ADDITIVES

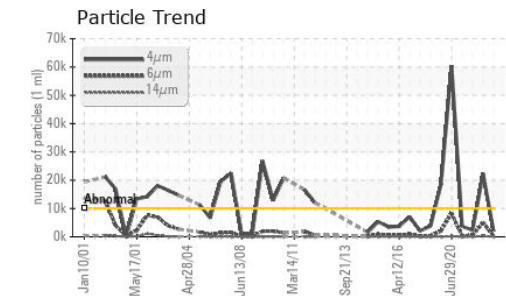
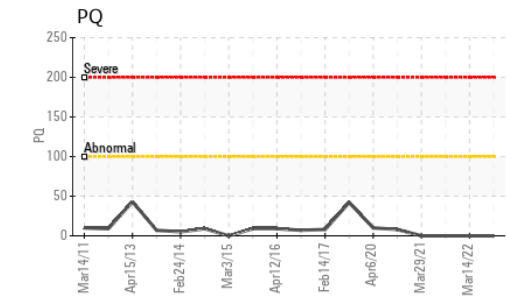
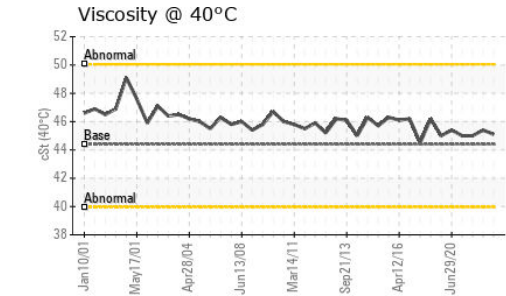
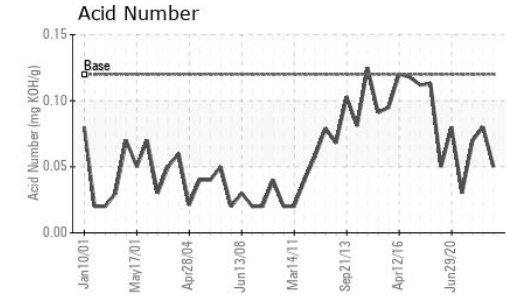
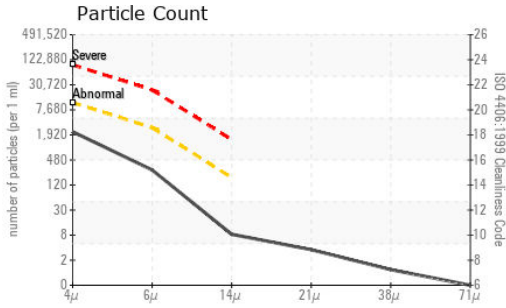
	method	limit/base	current	history1	history2
Boron	ppm	ASTM D5185(m)	0	<1	<1
Barium	ppm	ASTM D5185(m)	0	0	0
Molybdenum	ppm	ASTM D5185(m)	0	0	0
Manganese	ppm	ASTM D5185(m)	0	0	0
Magnesium	ppm	ASTM D5185(m)	<1	0	0
Calcium	ppm	ASTM D5185(m) 0	0	<1	<1
Phosphorus	ppm	ASTM D5185(m) 3	4	4	5
Zinc	ppm	ASTM D5185(m) 0	2	2	2
Sulfur	ppm	ASTM D5185(m)	161	141	141
Lithium	ppm	ASTM D5185(m)	<1	<1	<1

CONTAMINANTS

	method	limit/base	current	history1	history2
Silicon	ppm	ASTM D5185(m) >15	4	5	4
Sodium	ppm	ASTM D5185(m)	1	<1	1
Potassium	ppm	ASTM D5185(m) >20	<1	<1	1



OIL ANALYSIS REPORT



FLUID CLEANLINESS	method	limit/base	current	history1	history2
Particles >4µm	ASTM D7647	>10000	2006	▲ 22325	2301
Particles >6µm	ASTM D7647	>2500	243	▲ 5028	495
Particles >14µm	ASTM D7647	>160	7	● 294	12
Particles >21µm	ASTM D7647	>40	3	● 58	3
Particles >38µm	ASTM D7647	>10	1	4	0
Particles >71µm	ASTM D7647	>3	0	0	0
Oil Cleanliness	ISO 4406 (c)	>20/18/14	18/15/10	▲ 22/20/15	18/16/11

FLUID DEGRADATION	method	limit/base	current	history1	history2
Acid Number (AN)	mg KOH/g ASTM D974*	0.12	0.05	0.08	0.07

VISUAL	method	limit/base	current	history1	history2
White Metal	scalar Visual*	NONE	NONE	NONE	NONE
Yellow Metal	scalar Visual*	NONE	NONE	NONE	NONE
Precipitate	scalar Visual*	NONE	NONE	NONE	NONE
Silt	scalar Visual*	NONE	NONE	NONE	NONE
Debris	scalar Visual*	NONE	NONE	VLITE	NONE
Sand/Dirt	scalar Visual*	NONE	NONE	NONE	NONE
Appearance	scalar Visual*	NORML	NORML	NORML	NORML
Odor	scalar Visual*	NORML	NORML	NORML	NORML
Emulsified Water	scalar Visual*	>2	NEG	NEG	NEG
Free Water	scalar Visual*		NEG	NEG	NEG

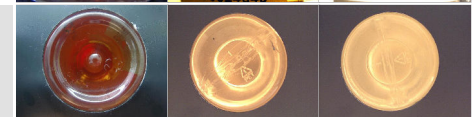
FLUID PROPERTIES	method	limit/base	current	history1	history2
Visc @ 40°C	cSt ASTM D7279(m)	44.4	45.1	45.4	45.0

SAMPLE IMAGES	method	limit/base	current	history1	history2
---------------	--------	------------	---------	----------	----------

Color



Bottom



Laboratory : WearCheck - C8-1175 Appleby Line, Burlington, ON L7L 5H9
Sample No. : WC0863086 **Received** : 28 Mar 2024
Lab Number : **02625304** **Tested** : 02 Apr 2024
Unique Number : 5750423 **Diagnosed** : 02 Apr 2024 - Wes Davis
Test Package : IND 2 (Additional Tests: PQ, PrtCount, TAN Man)

NEWFOUNDLAND & LABRADOR HYDRO
 BAY D'ESPOIR WHSE., 1 CAMP BOGGY RD., PO BOX 100
 MILLTOWN, BAY D'ESPOIR, NL
 CA A0H 1W0
 Contact: Matthew Lambert
 matthewlambert@nlh.nl.ca
 T: (709)882-3126
 F: (709)882-3161

To discuss this sample report, contact Customer Service at 1-800-268-2131.
 Test denoted (*) outside scope of accreditation, (m) method modified, (e) tested at external lab.
 Validity of results and interpretation are based on the sample and information as supplied.