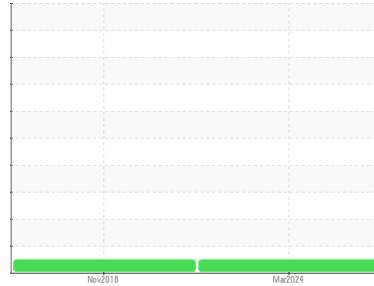




OIL ANALYSIS REPORT

Sample Rating Trend

NORMAL



Machine Id
Q-1705B TROLLEY WINCH DRIVE BOP CRANE CENTER (S/N 20423/Z)

Component
Center Winch

Fluid
IRVING HDH SAE 75W90 (--- GAL)

DIAGNOSIS

Recommendation

Resample at the next service interval to monitor.
NOTE: Please provide information regarding reservoir capacity, filter type and micron rating with next sample.

Wear

All component wear rates are normal.

Contamination

There is no indication of any contamination in the oil.

Fluid Condition

The AN level is acceptable for this fluid. The condition of the oil is suitable for further service.

SAMPLE INFORMATION		method	limit/base	current	history1	history2
Sample Number	Client Info			WC0764281	WC0296089	---
Sample Date	Client Info			11 Mar 2024	08 Nov 2018	---
Machine Age	hrs	Client Info		0	0	---
Oil Age	hrs	Client Info		0	0	---
Oil Changed	Client Info			Not Changed	Not Changed	---
Sample Status				NORMAL	NORMAL	---

CONTAMINATION		method	limit/base	current	history1	history2
Water	WC Method		>0.1	NEG	NEG	---

WEAR METALS		method	limit/base	current	history1	history2
PQ		ASTM D8184*		0	30	---
Iron	ppm	ASTM D5185(m)	>150	5	80	---
Chromium	ppm	ASTM D5185(m)	>10	0	0	---
Nickel	ppm	ASTM D5185(m)	>10	<1	0	---
Titanium	ppm	ASTM D5185(m)		0	0	---
Silver	ppm	ASTM D5185(m)		0	1	---
Aluminum	ppm	ASTM D5185(m)	>25	0	<1	---
Lead	ppm	ASTM D5185(m)	>100	3	<1	---
Copper	ppm	ASTM D5185(m)	>50	1	<1	---
Tin	ppm	ASTM D5185(m)	>10	0	0	---
Antimony	ppm	ASTM D5185(m)	>5	1	3	---
Vanadium	ppm	ASTM D5185(m)		0	0	---
Beryllium	ppm	ASTM D5185(m)		0	0	---
Cadmium	ppm	ASTM D5185(m)		0	<1	---

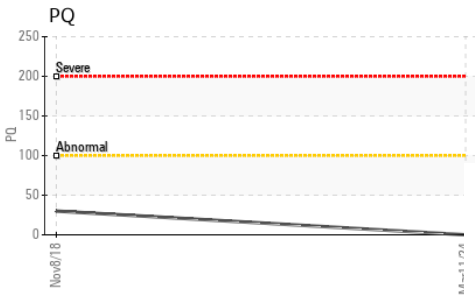
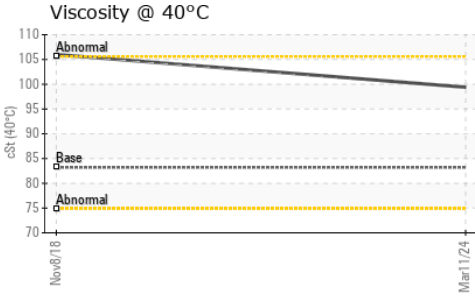
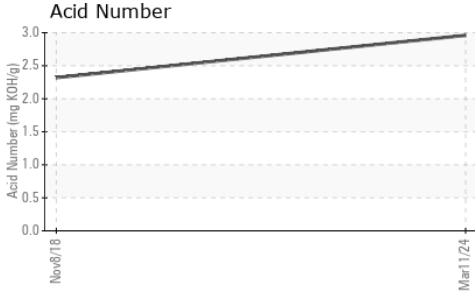
ADDITIVES		method	limit/base	current	history1	history2
Boron	ppm	ASTM D5185(m)		170	56	---
Barium	ppm	ASTM D5185(m)		0	2	---
Molybdenum	ppm	ASTM D5185(m)		0	<1	---
Manganese	ppm	ASTM D5185(m)		0	1	---
Magnesium	ppm	ASTM D5185(m)		<1	1	---
Calcium	ppm	ASTM D5185(m)		2	14	---
Phosphorus	ppm	ASTM D5185(m)		1048	807	---
Zinc	ppm	ASTM D5185(m)		10	25	---
Sulfur	ppm	ASTM D5185(m)		21454	19106	---
Lithium	ppm	ASTM D5185(m)		<1	0	---

CONTAMINANTS		method	limit/base	current	history1	history2
Silicon	ppm	ASTM D5185(m)	>50	0	4	---
Sodium	ppm	ASTM D5185(m)		<1	4	---
Potassium	ppm	ASTM D5185(m)	>20	1	0	---

FLUID DEGRADATION		method	limit/base	current	history1	history2
Acid Number (AN)	mg KOH/g	ASTM D974*		2.96	2.32	---



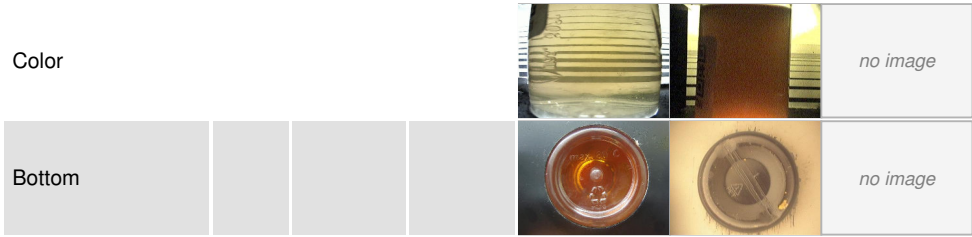
OIL ANALYSIS REPORT



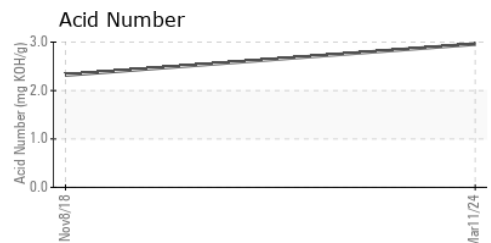
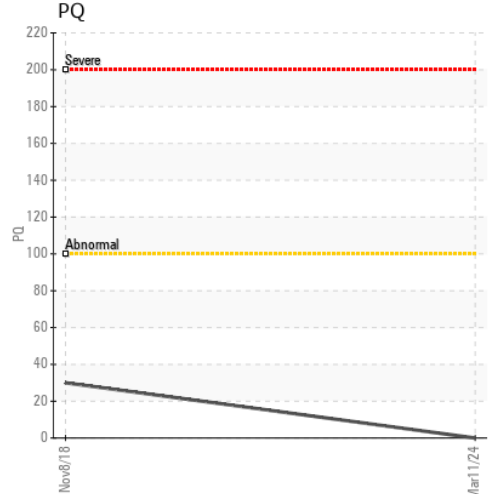
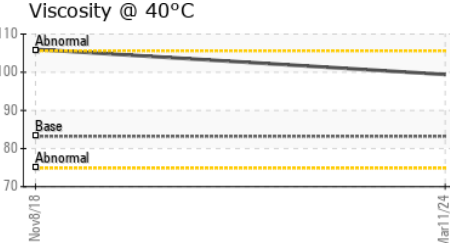
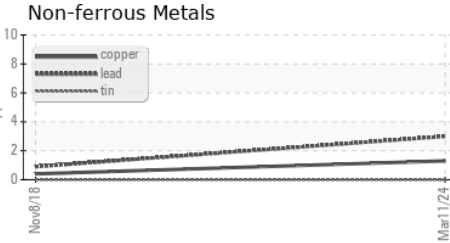
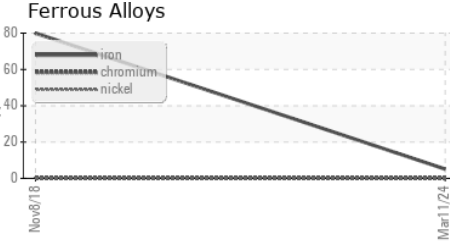
VISUAL	method	limit/base	current	history1	history2	
White Metal	scalar	Visual*	NONE	NONE	VLITE	---
Yellow Metal	scalar	Visual*	NONE	NONE	NONE	---
Precipitate	scalar	Visual*	NONE	NONE	NONE	---
Silt	scalar	Visual*	NONE	NONE	LIGHT	---
Debris	scalar	Visual*	NONE	VLITE	VLITE	---
Sand/Dirt	scalar	Visual*	NONE	NONE	NONE	---
Appearance	scalar	Visual*	NORML	NORML	NORML	---
Odor	scalar	Visual*	NORML	NORML	NORML	---
Emulsified Water	scalar	Visual*	>0.1	NEG	NEG	---
Free Water	scalar	Visual*		NEG	NEG	---

FLUID PROPERTIES	method	limit/base	current	history1	history2	
Visc @ 40°C	cSt	ASTM D7279(m)	83.2	99.4	106	---

SAMPLE IMAGES	method	limit/base	current	history1	history2
---------------	--------	------------	---------	----------	----------



GRAPHS



Laboratory : WearCheck - C8-1175 Appleby Line, Burlington, ON L7L 5H9
Sample No. : WC0764281 **Received** : 28 Mar 2024
Lab Number : **02625411** **Tested** : 01 Apr 2024
Unique Number : 5750530 **Diagnosed** : 01 Apr 2024 - Wes Davis
Test Package : IND 2 (Additional Tests: TAN Man)

Parker Wellbore
 215 Water Street, Suite 802, PO Box 74
 St. John's, NL
 CA A1C 6C9
 Contact: HMDC Material Control Coordinator
 hmdc.material.control.coordinator@exxonmobil.com

To discuss this sample report, contact Customer Service at 1-800-268-2131.
 Test denoted (*) outside scope of accreditation, (m) method modified, (e) tested at external lab.
 Validity of results and interpretation are based on the sample and information as supplied.

T:
F: