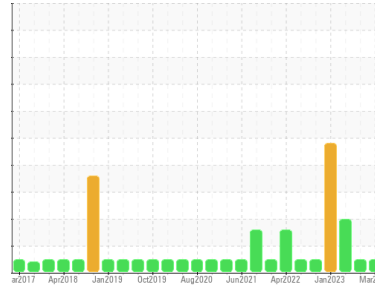




# OIL ANALYSIS REPORT

Sample Rating Trend



**NORMAL**



Area  
**Materials Handling/NE Pedestal Crane**  
 Machine Id  
**WPD471231 CRANE PEDESTAL NORTH EAST**  
 Component  
**Luffing Brake**  
 Fluid  
**MOBIL MOBILUBE HD 80W90 (--- GAL)**

## DIAGNOSIS

### Recommendation

Resample at the next service interval to monitor.  
 NOTE: Please provide information regarding reservoir capacity, filter type and micron rating with next sample. Please specify the component make and model with your next sample.

### Wear

All component wear rates are normal.

### Contamination

There is no indication of any contamination in the fluid.

### Fluid Condition

The AN level is acceptable for this fluid. The condition of the fluid is suitable for further service.

## SAMPLE INFORMATION

method	limit/base	current	history1	history2
Sample Number	Client Info	<b>PP</b>	PP13897519	PP13891525
Sample Date	Client Info	<b>27 Mar 2024</b>	01 Jul 2023	03 May 2023
Machine Age	hrs	<b>0</b>	0	0
Oil Age	hrs	<b>0</b>	0	0
Oil Changed	Client Info	<b>N/A</b>	N/A	N/A
Sample Status		<b>NORMAL</b>	NORMAL	ABNORMAL

## CONTAMINATION

method	limit/base	current	history1	history2
Water	WC Method >0.2	<b>NEG</b>	NEG	NEG

## WEAR METALS

method	limit/base	current	history1	history2
PQ	ASTM D8184*	<b>26</b>	17	▲ 22
Iron	ppm ASTM D5185(m) >350	<b>46</b>	22	53
Chromium	ppm ASTM D5185(m) >5	<b>0</b>	0	0
Nickel	ppm ASTM D5185(m) >5	<b>&lt;1</b>	<1	0
Titanium	ppm ASTM D5185(m)	<b>0</b>	0	0
Silver	ppm ASTM D5185(m)	<b>0</b>	0	0
Aluminum	ppm ASTM D5185(m) >8	<b>0</b>	<1	<1
Lead	ppm ASTM D5185(m) >10	<b>0</b>	<1	<1
Copper	ppm ASTM D5185(m) >150	<b>9</b>	16	20
Tin	ppm ASTM D5185(m) >5	<b>&lt;1</b>	<1	1
Antimony	ppm ASTM D5185(m) >5	<b>0</b>	<1	0
Vanadium	ppm ASTM D5185(m)	<b>0</b>	0	0
Beryllium	ppm ASTM D5185(m)	<b>0</b>	0	0
Cadmium	ppm ASTM D5185(m)	<b>0</b>	0	0

## ADDITIVES

method	limit/base	current	history1	history2
Boron	ppm ASTM D5185(m)	<b>174</b>	173	179
Barium	ppm ASTM D5185(m)	<b>0</b>	0	0
Molybdenum	ppm ASTM D5185(m)	<b>0</b>	0	0
Manganese	ppm ASTM D5185(m)	<b>0</b>	<1	<1
Magnesium	ppm ASTM D5185(m)	<b>&lt;1</b>	<1	<1
Calcium	ppm ASTM D5185(m)	<b>4</b>	8	7
Phosphorus	ppm ASTM D5185(m)	<b>998</b>	1070	1100
Zinc	ppm ASTM D5185(m)	<b>26</b>	27	12
Sulfur	ppm ASTM D5185(m)	<b>24400</b>	21986	22939
Lithium	ppm ASTM D5185(m)	<b>&lt;1</b>	<1	<1

## CONTAMINANTS

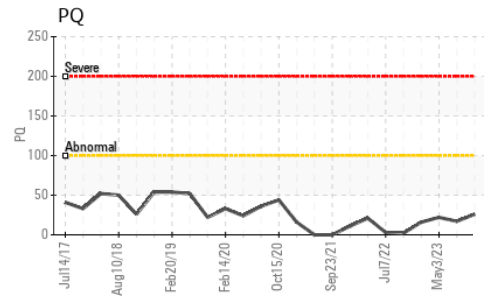
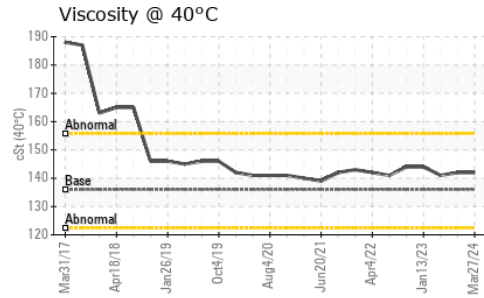
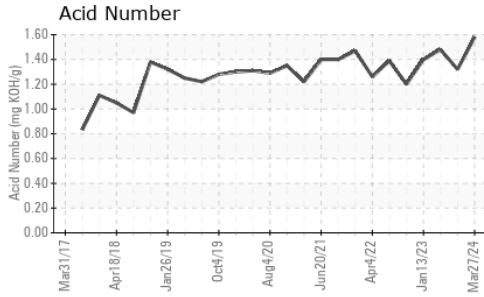
method	limit/base	current	history1	history2
Silicon	ppm ASTM D5185(m) >400	<b>0</b>	2	2
Sodium	ppm ASTM D5185(m)	<b>2</b>	3	2
Potassium	ppm ASTM D5185(m) >20	<b>&lt;1</b>	<1	<1

## FLUID DEGRADATION

method	limit/base	current	history1	history2
Acid Number (AN)	mg KOH/g ASTM D974*	<b>1.58</b>	1.32	1.48



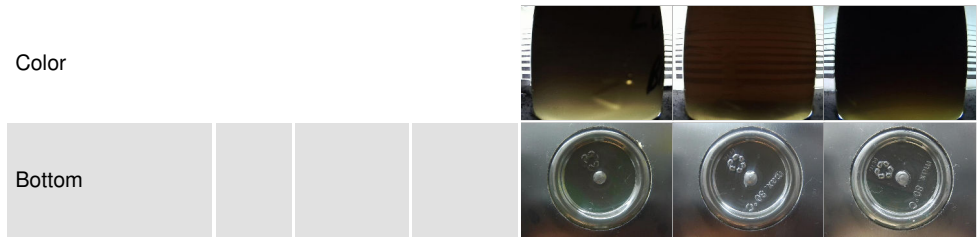
# OIL ANALYSIS REPORT



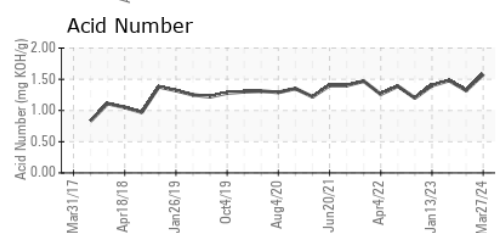
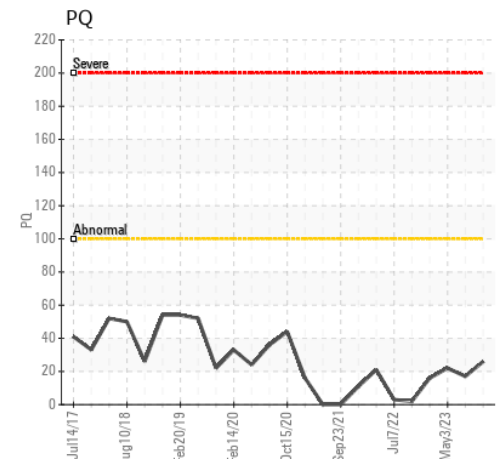
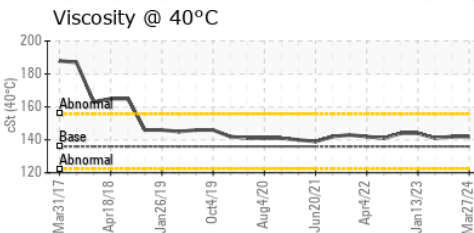
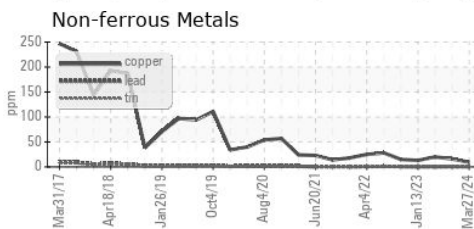
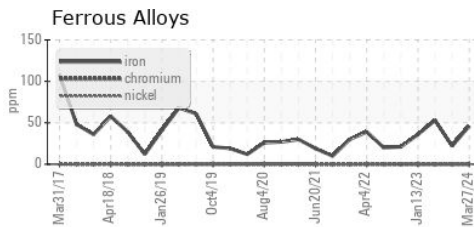
VISUAL	method	limit/base	current	history1	history2
White Metal	scalar	Visual*	NONE	NONE	NONE
Yellow Metal	scalar	Visual*	NONE	NONE	NONE
Precipitate	scalar	Visual*	NONE	NONE	NONE
Silt	scalar	Visual*	NONE	VLITE	LIGHT
Debris	scalar	Visual*	NONE	NONE	NONE
Sand/Dirt	scalar	Visual*	NONE	NONE	NONE
Appearance	scalar	Visual*	NORML	NORML	NORML
Odor	scalar	Visual*	NORML	NORML	NORML
Emulsified Water	scalar	Visual*	>0.2	NEG	.2%
Free Water	scalar	Visual*		NEG	NEG

FLUID PROPERTIES	method	limit/base	current	history1	history2
Visc @ 40°C	cSt	ASTM D7279(m)	136	142	141

SAMPLE IMAGES	method	limit/base	current	history1	history2
---------------	--------	------------	---------	----------	----------



## GRAPHS



**Laboratory** : WearCheck - C8-1175 Appleby Line, Burlington, ON L7L 5H9  
**Sample No.** : PP **Received** : 28 Mar 2024  
**Lab Number** : 02625417 **Tested** : 01 Apr 2024  
**Unique Number** : 5750536 **Diagnosed** : 01 Apr 2024 - Kevin Marson  
**Test Package** : MAR 2 ( Additional Tests: TAN Man )

**ExxonMobil Canada East Ltd.**  
 Hebron-Materials and Repair Coordin, Suite 1000, 100 New Gow  
 St. John's, NL  
 CA A1C 6K3  
 Contact: Liam Maher  
 liam.m.maher@exxonmobil.com  
 T: (709)273-3729  
 F:

To discuss this sample report, contact Customer Service at 1-800-268-2131.  
 Test denoted (\*) outside scope of accreditation, (m) method modified, (e) tested at external lab.  
 Validity of results and interpretation are based on the sample and information as supplied.