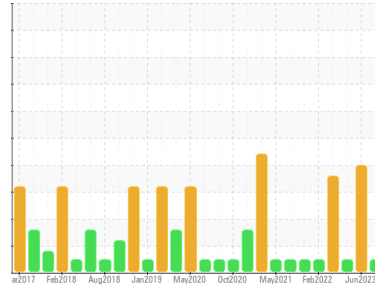




OIL ANALYSIS REPORT

Sample Rating Trend



NORMAL



Area
Materials Handling/SW Pedestal Crane
 Machine Id
WPD471201 CRANE PEDESTAL SOUTH WEST
 Component
Luffing Brake
 Fluid
MOBIL MOBILUBE HD 80W90 (--- GAL)

DIAGNOSIS

Recommendation

Resample at the next service interval to monitor.
 NOTE: Please provide information regarding reservoir capacity, filter type and micron rating with next sample. Please specify the component make and model with your next sample.

Wear

All component wear rates are normal.

Contamination

There is no indication of any contamination in the fluid.

Fluid Condition

The AN level is acceptable for this fluid. The condition of the fluid is suitable for further service.

SAMPLE INFORMATION

	method	limit/base	current	history1	history2
Sample Number	Client Info		PP	PP13900049	PP
Sample Date	Client Info		27 Mar 2024	27 Jun 2023	25 May 2023
Machine Age	hrs	Client Info	0	0	0
Oil Age	hrs	Client Info	0	0	0
Oil Changed	Client Info		N/A	N/A	N/A
Sample Status			NORMAL	ABNORMAL	NORMAL

CONTAMINATION

	method	limit/base	current	history1	history2
Water	WC Method	>0.2	NEG	NEG	NEG

WEAR METALS

	method	limit/base	current	history1	history2
PQ	ASTM D8184*		20	52	24
Iron	ppm	ASTM D5185(m) >350	30	55	53
Chromium	ppm	ASTM D5185(m) >5	0	<1	0
Nickel	ppm	ASTM D5185(m) >5	<1	<1	2
Titanium	ppm	ASTM D5185(m)	0	0	<1
Silver	ppm	ASTM D5185(m)	0	5	0
Aluminum	ppm	ASTM D5185(m) >8	0	<1	<1
Lead	ppm	ASTM D5185(m) >10	0	<1	0
Copper	ppm	ASTM D5185(m) >150	18	23	13
Tin	ppm	ASTM D5185(m) >5	<1	1	<1
Antimony	ppm	ASTM D5185(m) >5	0	0	0
Vanadium	ppm	ASTM D5185(m)	0	0	0
Beryllium	ppm	ASTM D5185(m)	0	0	0
Cadmium	ppm	ASTM D5185(m)	0	<1	0

ADDITIVES

	method	limit/base	current	history1	history2
Boron	ppm	ASTM D5185(m)	174	151	157
Barium	ppm	ASTM D5185(m)	0	0	0
Molybdenum	ppm	ASTM D5185(m)	0	<1	0
Manganese	ppm	ASTM D5185(m)	0	<1	<1
Magnesium	ppm	ASTM D5185(m)	1	1	0
Calcium	ppm	ASTM D5185(m)	3	5	1
Phosphorus	ppm	ASTM D5185(m)	1006	1055	1103
Zinc	ppm	ASTM D5185(m)	15	54	68
Sulfur	ppm	ASTM D5185(m)	23831	21951	23232
Lithium	ppm	ASTM D5185(m)	<1	<1	<1

CONTAMINANTS

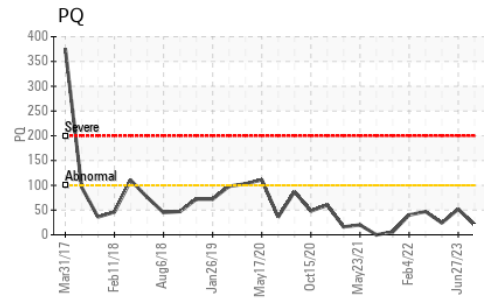
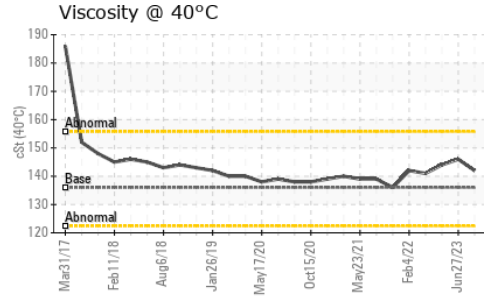
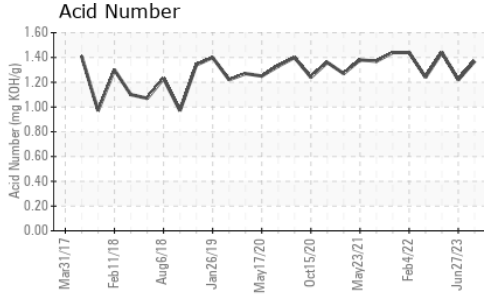
	method	limit/base	current	history1	history2
Silicon	ppm	ASTM D5185(m) >400	0	2	2
Sodium	ppm	ASTM D5185(m)	1	2	4
Potassium	ppm	ASTM D5185(m) >20	<1	<1	<1

FLUID DEGRADATION

	method	limit/base	current	history1	history2
Acid Number (AN)	mg KOH/g	ASTM D974*	1.37	1.22	1.44



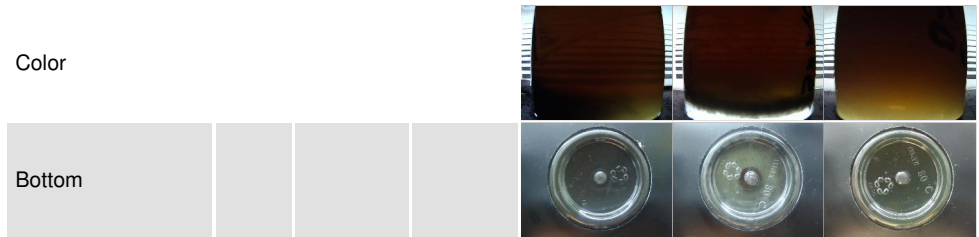
OIL ANALYSIS REPORT



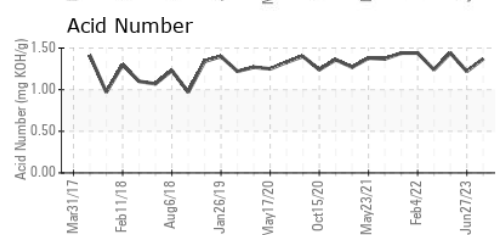
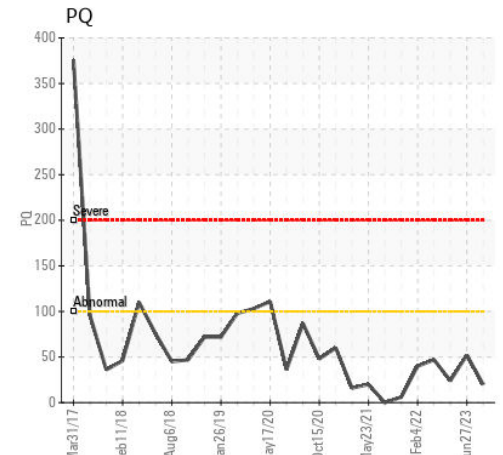
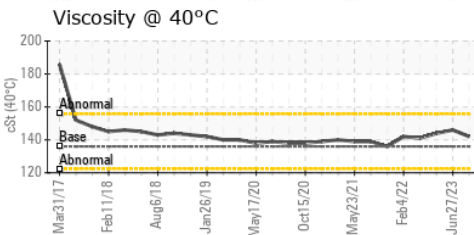
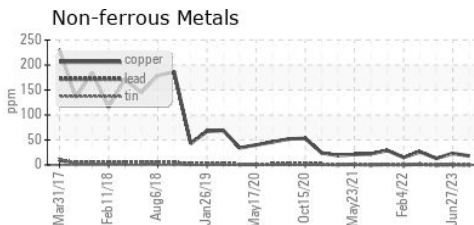
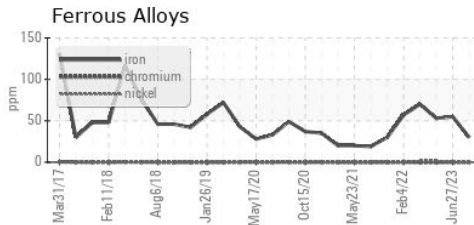
VISUAL	method	limit/base	current	history1	history2
White Metal	scalar	Visual*	NONE	NONE	NONE
Yellow Metal	scalar	Visual*	NONE	NONE	NONE
Precipitate	scalar	Visual*	NONE	NONE	NONE
Silt	scalar	Visual*	NONE	VLITE	VLITE
Debris	scalar	Visual*	NONE	NONE	VLITE
Sand/Dirt	scalar	Visual*	NONE	NONE	VLITE
Appearance	scalar	Visual*	NORML	NORML	▲ WGOIL
Odor	scalar	Visual*	NORML	NORML	NORML
Emulsified Water	scalar	Visual*	>0.2	NEG	▲ 1%
Free Water	scalar	Visual*		NEG	▲ 5%

FLUID PROPERTIES	method	limit/base	current	history1	history2
Visc @ 40°C	cSt	ASTM D7279(m)	136	142	146

SAMPLE IMAGES	method	limit/base	current	history1	history2
---------------	--------	------------	---------	----------	----------



GRAPHS



Laboratory : WearCheck - C8-1175 Appleby Line, Burlington, ON L7L 5H9
Sample No. : PP **Received** : 28 Mar 2024
Lab Number : 02625451 **Tested** : 01 Apr 2024
Unique Number : 5750570 **Diagnosed** : 01 Apr 2024 - Kevin Marson
Test Package : MAR 2 (Additional Tests: TAN Man)

ExxonMobil Canada East Ltd.
 Hebron-Materials and Repair Coordin, Suite 1000, 100 New Gow
 St. John's, NL
 CA A1C 6K3
 Contact: Liam Maher
 liam.m.maher@exxonmobil.com
 T: (709)273-3729
 F:

To discuss this sample report, contact Customer Service at 1-800-268-2131.
 Test denoted (*) outside scope of accreditation, (m) method modified, (e) tested at external lab.
 Validity of results and interpretation are based on the sample and information as supplied.