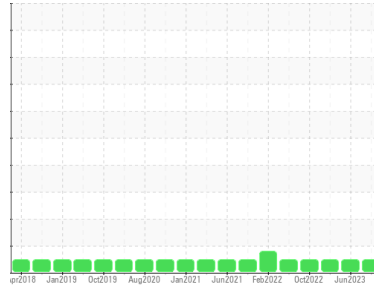




GREASE ANALYSIS

Sample Rating Trend

NORMAL



Area
Materials Handling/SW Pedestal Crane
 Machine Id
WPD471201 CRANE PEDESTAL SOUTH WEST

Component
0° Grease
 Fluid
MOBIL MOBILGREASE XHP 222 (--- GAL)

DIAGNOSIS

Recommendation
 Resample at the next service interval to monitor.

Wear
 All component wear rates are normal.

Grease Condition
 The condition of the grease is acceptable for the time in service.

Contaminants
 There is no indication of any contamination in the grease.

SAMPLE INFORMATION

method	limit/base	current	history1	history2
Sample Number	Client Info	PP	PP13900049	PP
Sample Date	Client Info	27 Mar 2024	27 Jun 2023	25 May 2023
Machine Age	hrs	0	0	0
Grease Age	hrs	0	0	0
Grease Serviced	Client Info	N/A	N/A	N/A
Sample Status		NORMAL	NORMAL	NORMAL

CONTAMINATION

method	limit/base	current	history1	history2
Water	WC Method >0.1	NEG	NEG	NEG

WEAR METALS

method	limit/base	current	history1	history2
PQ	ASTM D8184* >200	660	21	240
Iron	ppm ASTM D5185(m) >250	38	29	36
Chromium	ppm ASTM D5185(m) >10	0	<1	<1
Nickel	ppm ASTM D5185(m) >5	<1	0	0
Cadmium	ppm ASTM D5185(m)	0	0	0
Titanium	ppm ASTM D5185(m)	0	0	0
Vanadium	ppm ASTM D5185(m)	0	0	0
Lead	ppm ASTM D5185(m) >25	0	0	0
Copper	ppm ASTM D5185(m) >75	<1	<1	<1
Tin	ppm ASTM D5185(m) >5	0	0	0
Silver	ppm ASTM D5185(m) >5	0	<1	0

ADDITIVES

method	limit/base	current	history1	history2
Boron	ppm ASTM D5185(m)	7	8	8
Magnesium	ppm ASTM D5185(m)	2	<1	0
Manganese	ppm ASTM D5185(m)	0	<1	<1
Molybdenum	ppm ASTM D5185(m)	21	23	23
Phosphorus	ppm ASTM D5185(m)	135	141	163
Zinc	ppm ASTM D5185(m)	196	203	220
Antimony	ppm ASTM D5185(m)	9	8	9

THICKENER/SOAP

method	limit/base	current	history1	history2
Aluminum	ppm ASTM D5185(m)	<1	<1	<1
Barium	ppm ASTM D5185(m)	<1	0	0
Calcium	ppm ASTM D5185(m)	20	6	16
Sodium	ppm ASTM D5185(m)	13	4	3
Lithium	ppm ASTM D5185(m)	218	199	207
Sulfur	ppm ASTM D5185(m)	831	756	883

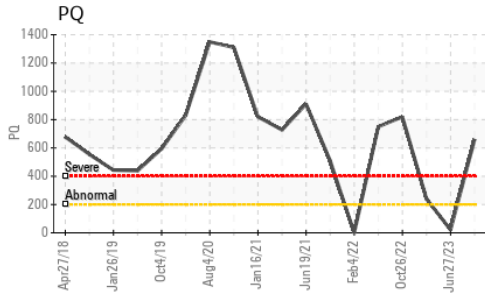
CONTAMINANTS

method	limit/base	current	history1	history2
Silicon	ppm ASTM D5185(m) >150	0	<1	<1
Potassium	ppm ASTM D5185(m)	2	<1	1

GREASE CONDITION

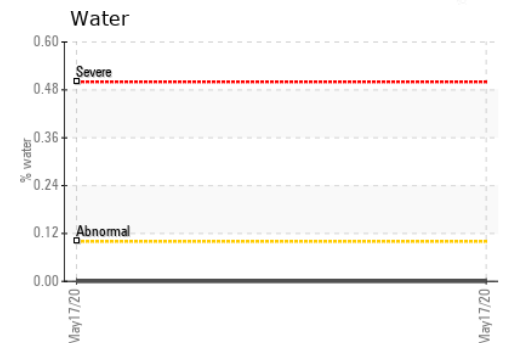
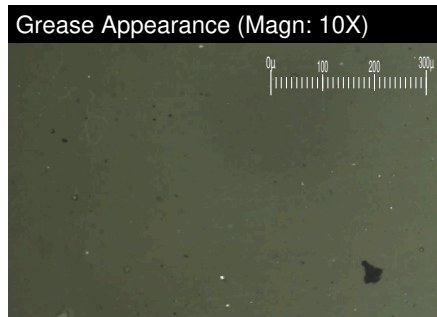
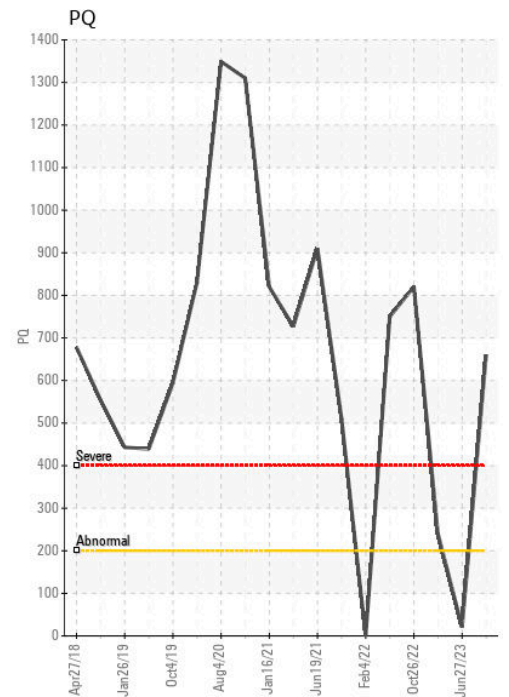
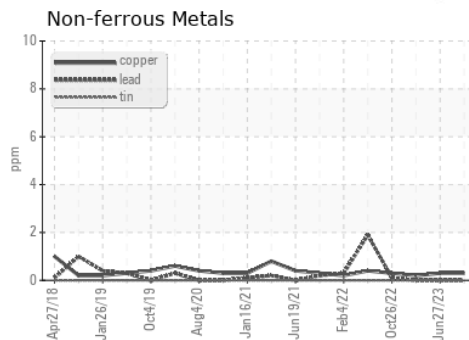
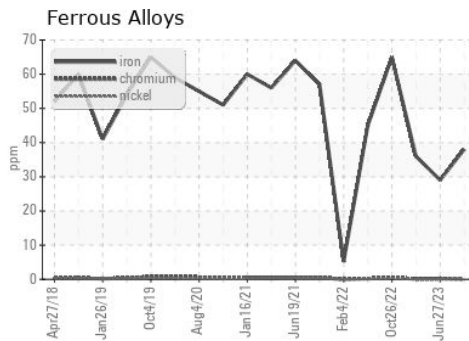
method	limit/base	current	history1	history2
Grease Color	Visual* Dk Blue	Green	Green	Green
Texture	In-house*	Short fiber	Short fiber	Buttery
NLGI Consistency	NLGI Scale SKF Method* 2	1-2	1-2	2

GREASE ANALYSIS



SAMPLE IMAGES	method	limit/base	current	history1	history2
Color					
Bottom					
PrtFilter					

GRAPHS



ISO 17025:2017
Accredited
Laboratory

Laboratory : WearCheck - C8-1175 Appleby Line, Burlington, ON L7L 5H9
Sample No. : PP
Lab Number : 02625487
Unique Number : 5750606
Test Package : GRS 1 (Additional Tests: BottomAnalysis)

Received : 28 Mar 2024
Tested : 03 Apr 2024
Diagnosed : 03 Apr 2024 - Bill Quesnel

To discuss this sample report, contact Customer Service at 1-800-268-2131.
 Test denoted (*) outside scope of accreditation, (m) method modified, (e) tested at external lab.
 Validity of results and interpretation are based on the sample and information as supplied.

ExxonMobil Canada East Ltd.
 Hebron-Materials and Repair Coordin, Suite 1000, 100 New Gow
 St. John's, NL
 CA A1C 6K3
 Contact: Liam Maher
 liam.m.maher@exxonmobil.com
 T: (709)273-3729
 F: