



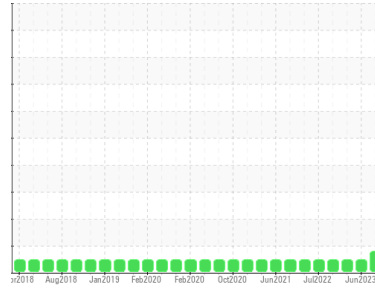
GREASE ANALYSIS

Sample Rating Trend

VISCOSITY



Area
Materials Handling/SW Pedestal Crane
 Machine Id
WPD471201 CRANE PEDESTAL SOUTH WEST
 Component
90° Grease
 Fluid
MOBIL MOBILGREASE XHP 222 (--- GAL)



DIAGNOSIS

Recommendation

We recommend an early resample to monitor this condition.

Wear

All component wear rates are normal.

Grease Condition

Grease consistency has changed by 1-1/2 NLGI grades from NLGI 2 to 0-1.

Contaminants

There is no indication of any contamination in the grease.

SAMPLE INFORMATION

method	limit/base	current	history1	history2
Sample Number	Client Info	PP	PP13900049	PP
Sample Date	Client Info	27 Mar 2024	27 Jun 2023	25 May 2023
Machine Age	hrs	Client Info	0	0
Grease Age	hrs	Client Info	0	0
Grease Serviced	Client Info	N/A	N/A	N/A
Sample Status		MARGINAL	NORMAL	NORMAL

CONTAMINATION

method	limit/base	current	history1	history2	
Water	WC Method	>0.1	NEG	NEG	NEG

WEAR METALS

method	limit/base	current	history1	history2		
PQ	ASTM D8184*	>200	540	32	350	
Iron	ppm	ASTM D5185(m)	>250	33	37	36
Chromium	ppm	ASTM D5185(m)	>10	0	<1	<1
Nickel	ppm	ASTM D5185(m)	>5	<1	<1	<1
Cadmium	ppm	ASTM D5185(m)		0	0	0
Titanium	ppm	ASTM D5185(m)		0	0	0
Vanadium	ppm	ASTM D5185(m)		0	0	0
Lead	ppm	ASTM D5185(m)	>25	0	0	0
Copper	ppm	ASTM D5185(m)	>75	<1	<1	<1
Tin	ppm	ASTM D5185(m)	>5	0	0	0
Silver	ppm	ASTM D5185(m)	>5	0	0	0

ADDITIVES

method	limit/base	current	history1	history2		
Boron	ppm	ASTM D5185(m)		6	6	9
Magnesium	ppm	ASTM D5185(m)		<1	<1	<1
Manganese	ppm	ASTM D5185(m)		0	<1	<1
Molybdenum	ppm	ASTM D5185(m)		15	17	27
Phosphorus	ppm	ASTM D5185(m)		135	143	163
Zinc	ppm	ASTM D5185(m)		201	198	217
Antimony	ppm	ASTM D5185(m)		5	14	10

THICKENER/SOAP

method	limit/base	current	history1	history2		
Aluminum	ppm	ASTM D5185(m)		<1	<1	<1
Barium	ppm	ASTM D5185(m)		<1	<1	0
Calcium	ppm	ASTM D5185(m)		4	17	8
Sodium	ppm	ASTM D5185(m)		5	5	4
Lithium	ppm	ASTM D5185(m)		199	211	214
Sulfur	ppm	ASTM D5185(m)		836	735	861

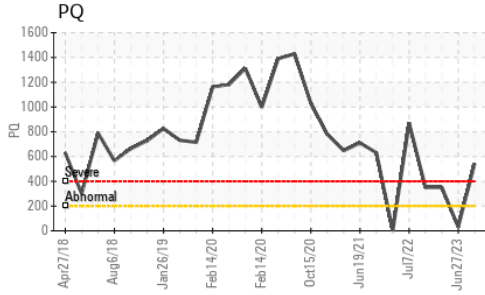
CONTAMINANTS

method	limit/base	current	history1	history2		
Silicon	ppm	ASTM D5185(m)	>150	0	<1	<1
Potassium	ppm	ASTM D5185(m)		<1	<1	1

GREASE CONDITION

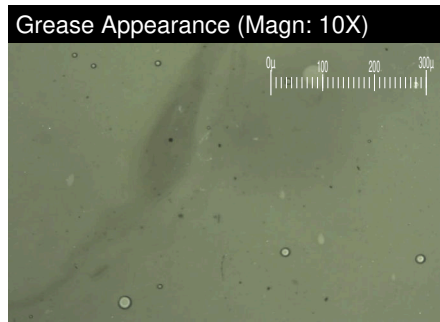
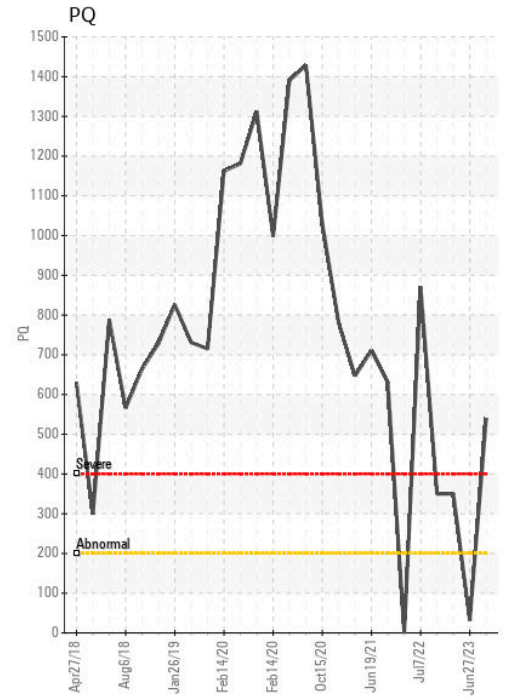
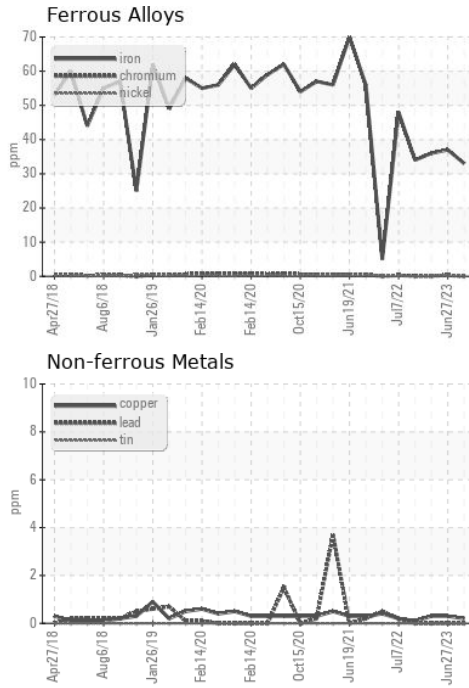
method	limit/base	current	history1	history2		
Grease Color	Visual*	Dk Blue	Green	Green	Green	
Texture	In-house*		Short fiber	Short fiber	Stringy	
NLGI Consistency	NLGI Scale	SKF Method*	2	▲ 0-1	1-2	2

GREASE ANALYSIS



SAMPLE IMAGES	method	limit/base	current	history1	history2
Color					
Bottom					
PrtFilter					

GRAPHS



Laboratory : WearCheck - C8-1175 Appleby Line, Burlington, ON L7L 5H9
Sample No. : PP **Received** : 28 Mar 2024
Lab Number : **02625488** **Tested** : 03 Apr 2024
Unique Number : 5750607 **Diagnosed** : 03 Apr 2024 - Bill Quesnel
Test Package : GRS 1 (Additional Tests: BottomAnalysis)

ExxonMobil Canada East Ltd.
 Hebron-Materials and Repair Coordin, Suite 1000, 100 New Gow
 St. John's, NL
 CA A1C 6K3
 Contact: Liam Maher
 liam.m.maher@exxonmobil.com
 T: (709)273-3729
 F:

To discuss this sample report, contact Customer Service at 1-800-268-2131.
 Test denoted (*) outside scope of accreditation, (m) method modified, (e) tested at external lab.
 Validity of results and interpretation are based on the sample and information as supplied.