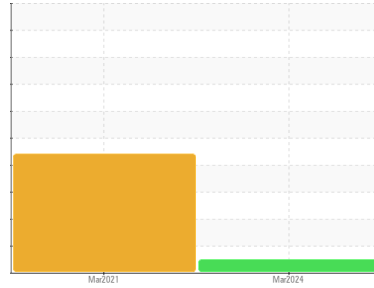




# OIL ANALYSIS REPORT

Sample Rating Trend



**NORMAL**



Machine Id  
**375 SEA RAY**

Component  
**Diesel Engine**

Fluid  
**DIESEL ENGINE OIL SAE 15W40 (--- GAL)**

## DIAGNOSIS

### Recommendation

Resample at the next service interval to monitor. Please specify the component make and model with your next sample.

### Wear

All component wear rates are normal.

### Contamination

There is no indication of any contamination in the oil.

### Fluid Condition

The condition of the oil is acceptable for the time in service.

SAMPLE INFORMATION		method	limit/base	current	history1	history2
Sample Number	Client Info			<b>WC0910617</b>	WC0515867	---
Sample Date	Client Info			<b>21 Mar 2024</b>	25 Mar 2021	---
Machine Age	hrs	Client Info		<b>0</b>	0	---
Oil Age	hrs	Client Info		<b>0</b>	0	---
Oil Changed	Client Info			<b>N/A</b>	N/A	---
Sample Status				<b>NORMAL</b>	SEVERE	---

CONTAMINATION		method	limit/base	current	history1	history2
Fuel	WC Method	>5		<b>&lt;1.0</b>	0.5	---
Water	WC Method	>0.2		<b>NEG</b>	NEG	---
Glycol	WC Method			<b>NEG</b>	0.0	---

WEAR METALS		method	limit/base	current	history1	history2
Iron	ppm	ASTM D5185(m)	>100	<b>7</b>	13	---
Chromium	ppm	ASTM D5185(m)	>20	<b>&lt;1</b>	1	---
Nickel	ppm	ASTM D5185(m)	>4	<b>0</b>	<1	---
Titanium	ppm	ASTM D5185(m)		<b>7</b>	66	---
Silver	ppm	ASTM D5185(m)	>3	<b>0</b>	<1	---
Aluminum	ppm	ASTM D5185(m)	>20	<b>3</b>	17	---
Lead	ppm	ASTM D5185(m)	>40	<b>4</b>	5	---
Copper	ppm	ASTM D5185(m)	>330	<b>197</b>	129	---
Tin	ppm	ASTM D5185(m)	>15	<b>0</b>	<1	---
Antimony	ppm	ASTM D5185(m)		<b>0</b>	0	---
Vanadium	ppm	ASTM D5185(m)		<b>0</b>	<1	---
Beryllium	ppm	ASTM D5185(m)		<b>0</b>	0	---
Cadmium	ppm	ASTM D5185(m)		<b>0</b>	<1	---

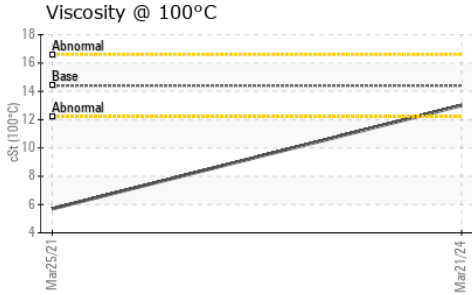
ADDITIVES		method	limit/base	current	history1	history2
Boron	ppm	ASTM D5185(m)	250	<b>13</b>	123	---
Barium	ppm	ASTM D5185(m)	10	<b>&lt;1</b>	4	---
Molybdenum	ppm	ASTM D5185(m)	100	<b>55</b>	6	---
Manganese	ppm	ASTM D5185(m)		<b>0</b>	1	---
Magnesium	ppm	ASTM D5185(m)	450	<b>870</b>	359	---
Calcium	ppm	ASTM D5185(m)	3000	<b>1090</b>	1559	---
Phosphorus	ppm	ASTM D5185(m)	1150	<b>1028</b>	968	---
Zinc	ppm	ASTM D5185(m)	1350	<b>1117</b>	1171	---
Sulfur	ppm	ASTM D5185(m)	4250	<b>2780</b>	3433	---
Lithium	ppm	ASTM D5185(m)		<b>&lt;1</b>	<1	---

CONTAMINANTS		method	limit/base	current	history1	history2
Silicon	ppm	ASTM D5185(m)	>25	<b>3</b>	10	---
Sodium	ppm	ASTM D5185(m)	>158	<b>5</b>	13	---
Potassium	ppm	ASTM D5185(m)	>20	<b>7</b>	58	---

INFRA-RED		method	limit/base	current	history1	history2
Soot %	%	ASTM D7844*	>3	<b>0</b>	0	---
Nitration	Abs/cm	ASTM D7624*	>20	<b>6.7</b>	9.3	---
Sulfation	Abs/.1mm	ASTM D7415*	>30	<b>21.5</b>	16.8	---



# OIL ANALYSIS REPORT



FLUID DEGRADATION		method	limit/base	current	history1	history2
-------------------	--	--------	------------	---------	----------	----------

Oxidation	Abs./1mm	ASTM D7414*	>25	<b>14.4</b>	14.6	---
-----------	----------	-------------	-----	-------------	------	-----

VISUAL		method	limit/base	current	history1	history2
--------	--	--------	------------	---------	----------	----------

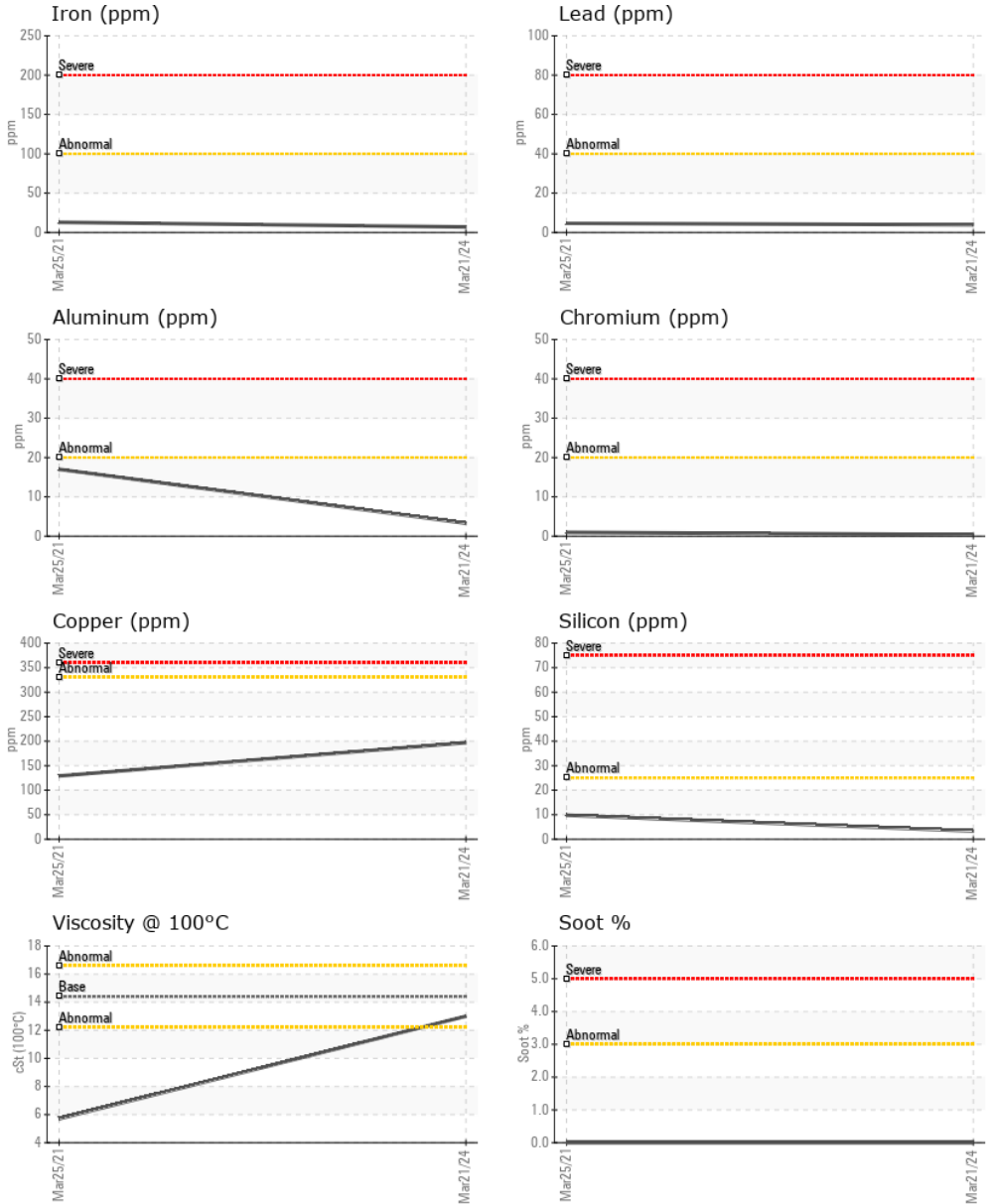
Emulsified Water	scalar	Visual*	>0.2	<b>NEG</b>	▲ .2%	---
------------------	--------	---------	------	------------	-------	-----

Free Water	scalar	Visual*		<b>NEG</b>	NEG	---
------------	--------	---------	--	------------	-----	-----

FLUID PROPERTIES		method	limit/base	current	history1	history2
------------------	--	--------	------------	---------	----------	----------

Visc @ 100°C	cSt	ASTM D7279(m)	14.4	<b>13.0</b>	▲ 5.7	---
--------------	-----	---------------	------	-------------	-------	-----

## GRAPHS



**Laboratory** : WearCheck - C8-1175 Appleby Line, Burlington, ON L7L 5H9  
**Sample No.** : WC0910617  
**Lab Number** : 02625618  
**Unique Number** : 5750737  
**Test Package** : MOB 1

**Received** : 01 Apr 2024  
**Tested** : 01 Apr 2024  
**Diagnosed** : 01 Apr 2024 - Wes Davis

**NORTHERN GENERATOR CO. LTD.**  
 80 ASHBRIDGE CIRCLE., UNIT #1 & 2  
 WOODBRIDGE, ON  
 CA L4L 3R5  
 Contact: Selome Afework  
 selome@northerngenerator.com  
 T: (905)264-9744  
 F: (905)264-9714

To discuss this sample report, contact Customer Service at 1-800-268-2131.  
 Test denoted (\*) outside scope of accreditation, (m) method modified, (e) tested at external lab.  
 Validity of results and interpretation are based on the sample and information as supplied.