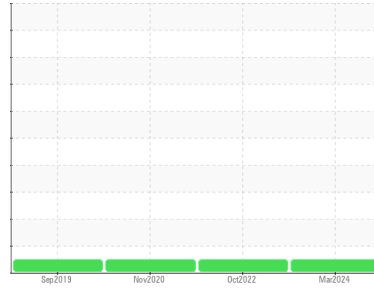




OIL ANALYSIS REPORT

Sample Rating Trend

NORMAL



Machine Id
942 YONGE

Component
Diesel Engine

Fluid
PETRO CANADA XR 4 SAE 15W40 (--- GAL)

DIAGNOSIS

Recommendation

Resample at the next service interval to monitor. Please specify the component make and model with your next sample.

Wear

All component wear rates are normal.

Contamination

There is no indication of any contamination in the oil.

Fluid Condition

The condition of the oil is acceptable for the time in service.

SAMPLE INFORMATION

	method	limit/base	current	history1	history2
Sample Number	Client Info		WC0910626	WC0727145	WC0483811
Sample Date	Client Info		25 Mar 2024	05 Oct 2022	05 Nov 2020
Machine Age	hrs	Client Info	0	189	275
Oil Age	hrs	Client Info	0	0	0
Oil Changed	Client Info		N/A	Changed	Changed
Sample Status			NORMAL	NORMAL	NORMAL

CONTAMINATION

	method	limit/base	current	history1	history2
Fuel	WC Method	>5	<1.0	<1.0	<1.0
Water	WC Method	>0.2	NEG	NEG	NEG
Glycol	WC Method		NEG	NEG	NEG

WEAR METALS

	method	limit/base	current	history1	history2	
Iron	ppm	ASTM D5185(m)	>100	5	3	4
Chromium	ppm	ASTM D5185(m)	>20	0	0	<1
Nickel	ppm	ASTM D5185(m)	>4	0	0	0
Titanium	ppm	ASTM D5185(m)		0	0	0
Silver	ppm	ASTM D5185(m)	>3	0	0	0
Aluminum	ppm	ASTM D5185(m)	>20	<1	<1	1
Lead	ppm	ASTM D5185(m)	>40	1	2	2
Copper	ppm	ASTM D5185(m)	>330	2	2	2
Tin	ppm	ASTM D5185(m)	>15	<1	<1	<1
Antimony	ppm	ASTM D5185(m)		0	<1	0
Vanadium	ppm	ASTM D5185(m)		0	0	0
Beryllium	ppm	ASTM D5185(m)		0	0	0
Cadmium	ppm	ASTM D5185(m)		0	0	0

ADDITIVES

	method	limit/base	current	history1	history2	
Boron	ppm	ASTM D5185(m)	1	325	8	44
Barium	ppm	ASTM D5185(m)	1	0	0	0
Molybdenum	ppm	ASTM D5185(m)	1	78	60	65
Manganese	ppm	ASTM D5185(m)		0	<1	<1
Magnesium	ppm	ASTM D5185(m)	10	549	962	910
Calcium	ppm	ASTM D5185(m)	3032	1333	1106	1080
Phosphorus	ppm	ASTM D5185(m)	1054	1022	1119	983
Zinc	ppm	ASTM D5185(m)	1332	1170	1216	1194
Sulfur	ppm	ASTM D5185(m)	3985	2777	2921	2816
Lithium	ppm	ASTM D5185(m)		<1	<1	<1

CONTAMINANTS

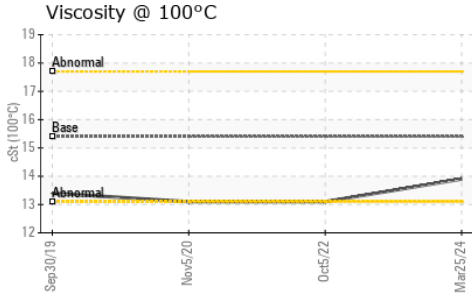
	method	limit/base	current	history1	history2	
Silicon	ppm	ASTM D5185(m)	>25	18	18	21
Sodium	ppm	ASTM D5185(m)		1	2	2
Potassium	ppm	ASTM D5185(m)	>20	<1	0	<1

INFRA-RED

	method	limit/base	current	history1	history2	
Soot %	%	ASTM D7844*	>3	0	0	0
Nitration	Abs/cm	ASTM D7624*	>20	4.0	5.1	4.6
Sulfation	Abs/.1mm	ASTM D7415*	>30	18.8	20.3	18.9



OIL ANALYSIS REPORT

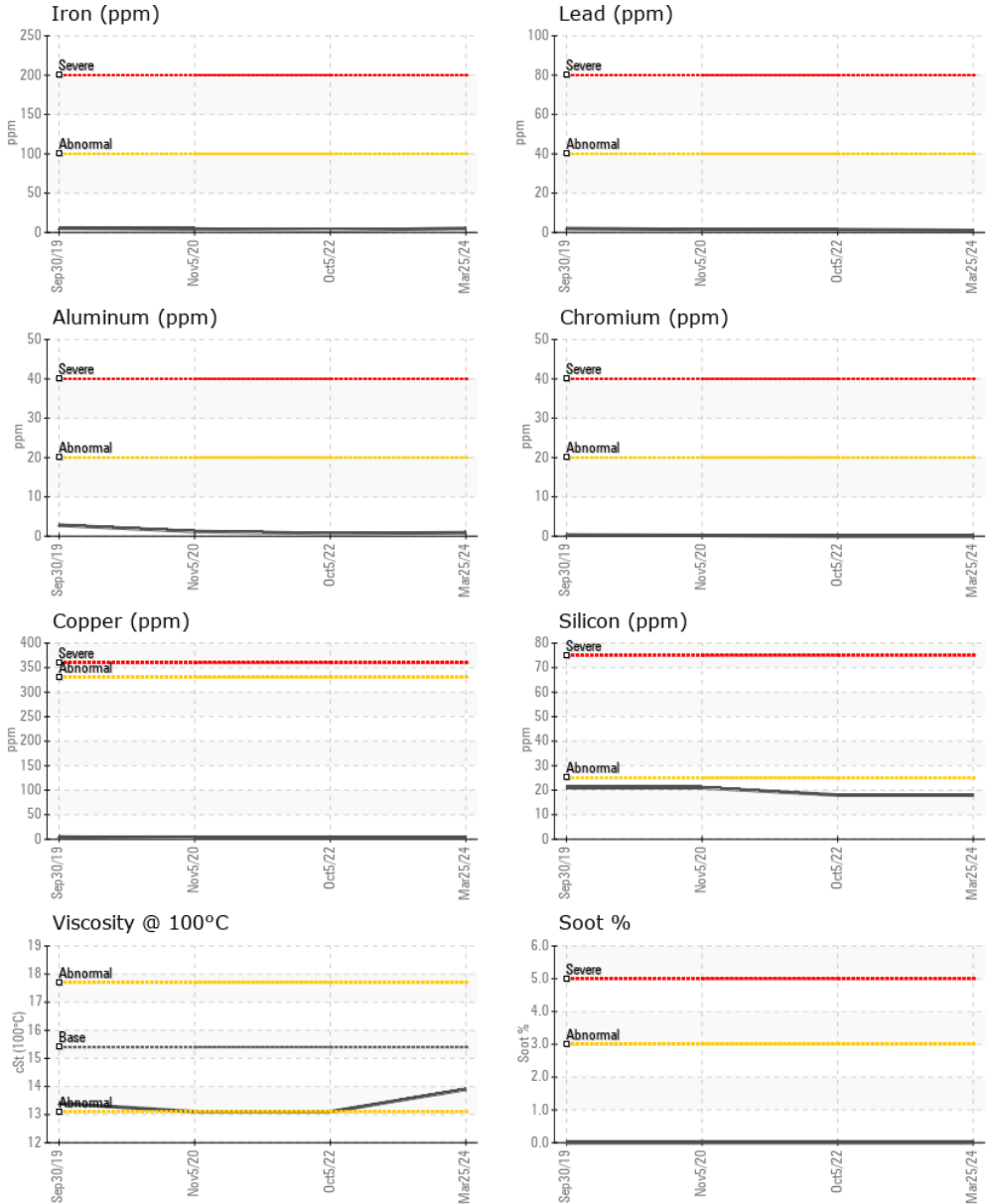


FLUID DEGRADATION		method	limit/base	current	history1	history2
Oxidation	Abs./1mm	ASTM D7414*	>25	12.6	14.4	13.8

VISUAL		method	limit/base	current	history1	history2
Emulsified Water	scalar	Visual*	>0.2	NEG	NEG	NEG
Free Water	scalar	Visual*		NEG	NEG	NEG

FLUID PROPERTIES		method	limit/base	current	history1	history2
Visc @ 100°C	cSt	ASTM D7279(m)	15.4	13.9	13.1	13.1

GRAPHS



Laboratory : WearCheck - C8-1175 Appleby Line, Burlington, ON L7L 5H9
Sample No. : WC0910626
Lab Number : 02625637
Unique Number : 5750756
Test Package : MOB 1
Received : 01 Apr 2024
Tested : 01 Apr 2024
Diagnosed : 01 Apr 2024 - Wes Davis

NORTHERN GENERATOR CO. LTD.
 80 ASHBRIDGE CIRCLE., UNIT #1 & 2
 WOODBRIDGE, ON
 CA L4L 3R5
 Contact: Selome Afework
 selome@northerngenerator.com
 T: (905)264-9744
 F: (905)264-9714

To discuss this sample report, contact Customer Service at 1-800-268-2131.
 Test denoted (*) outside scope of accreditation, (m) method modified, (e) tested at external lab.
 Validity of results and interpretation are based on the sample and information as supplied.