



# PROBLEM SUMMARY

Area  
**Beton Lagace - 888079**  
 Machine Id  
**XB123**  
 Component  
**Unknown Component**  
 Fluid  
**PETRO CANADA FLUSHFORM (--- GAL)**

Sample Rating Trend



SEDIMENT



## COMPONENT CONDITION SUMMARY

No relevant graphs to display

## RECOMMENDATION

The sample submitted is too dirty to perform an ISO dirt count.

## PROBLEMATIC TEST RESULTS

Sample Status				SEVERE	---	---
Silt	scalar	Visual*	NONE	▲ LTMOD	---	---
PrtFilter					no image	no image

Customer Id: CHECOB  
 Sample No.: E30001760  
 Lab Number: 02625703  
 Test Package: IND 2



To manage this report scan the QR code

To discuss the diagnosis or test data:  
 Tatiana Sorkina +1 (800)263-3939  
[tsorkina@e360s.ca](mailto:tsorkina@e360s.ca)

To change component or sample information:  
 Gloria Gonzalez +1 (289)291-4643 x4643  
[gloria.gonzalez@wearcheck.com](mailto:gloria.gonzalez@wearcheck.com)

RECOMMENDED ACTIONS

Action	Status	Date	Done By	Description
Alert	---	---	?	We were unable to perform a particle count due to a high concentration of particles present in this sample.

HISTORICAL DIAGNOSIS

# OIL ANALYSIS REPORT

Sample Rating Trend



**SEDIMENT**



Area  
**Beton Lagace - 888079**  
 Machine Id  
**XB123**  
 Component  
**Unknown Component**  
 Fluid  
**PETRO CANADA FLUSHFORM (--- GAL)**

**DIAGNOSIS**

- ▲ **Recommendation**  
 The sample submitted is too dirty to perform an ISO dirt count.
- ▲ **Contamination**  
 There is a moderate amount of silt (particulates < 14 microns in size) present in the sample.

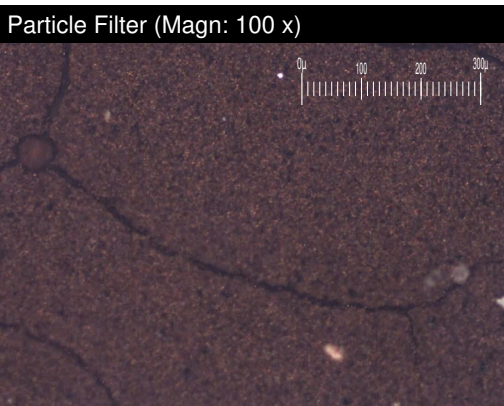
SAMPLE INFORMATION		method	limit/base	current	history1	history2
Department	Client Info			<b>Sales</b>	---	---
Sample From	Client Info			<b>Drum</b>	---	---
Production Stage	Client Info			<b>Virgin</b>	---	---
Sent to WC	Client Info			<b>03/27/2024</b>	---	---
Sample Number	Client Info			<b>E30001760</b>	---	---
Sample Date	Client Info			<b>20 Mar 2024</b>	---	---
Machine Age	hrs	Client Info		<b>0</b>	---	---
Oil Age	hrs	Client Info		<b>0</b>	---	---
Oil Changed	Client Info			<b>N/A</b>	---	---
Sample Status				<b>SEVERE</b>	---	---

WEAR METALS		method	limit/base	current	history1	history2
Iron	ppm	ASTM D5185(m)		<b>4</b>	---	---
Chromium	ppm	ASTM D5185(m)		<b>0</b>	---	---
Nickel	ppm	ASTM D5185(m)		<b>0</b>	---	---
Titanium	ppm	ASTM D5185(m)		<b>0</b>	---	---
Silver	ppm	ASTM D5185(m)		<b>0</b>	---	---
Aluminum	ppm	ASTM D5185(m)		<b>0</b>	---	---
Lead	ppm	ASTM D5185(m)		<b>0</b>	---	---
Copper	ppm	ASTM D5185(m)		<b>0</b>	---	---
Tin	ppm	ASTM D5185(m)		<b>0</b>	---	---
Antimony	ppm	ASTM D5185(m)		<b>0</b>	---	---
Vanadium	ppm	ASTM D5185(m)		<b>0</b>	---	---
Beryllium	ppm	ASTM D5185(m)		<b>0</b>	---	---
Cadmium	ppm	ASTM D5185(m)		<b>0</b>	---	---

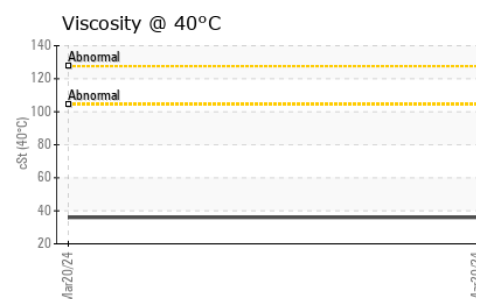
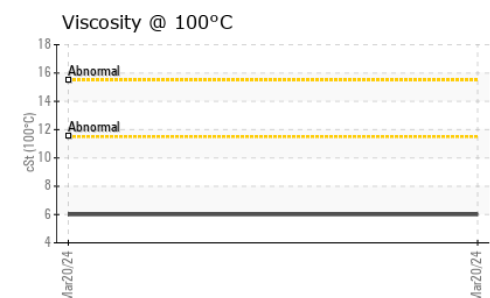
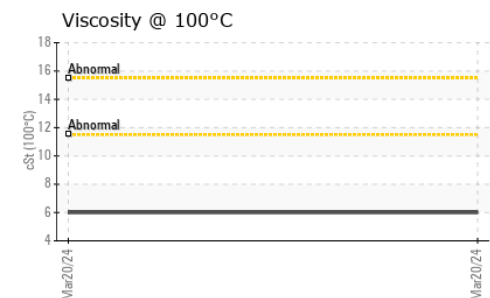
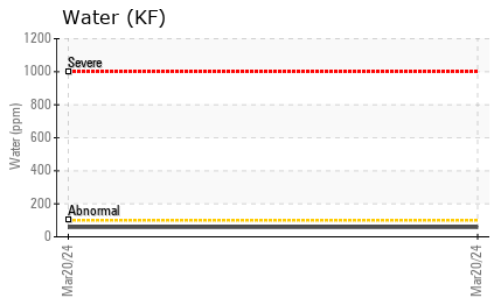
ADDITIVES		method	limit/base	current	history1	history2
Boron	ppm	ASTM D5185(m)		<b>0</b>	---	---
Barium	ppm	ASTM D5185(m)		<b>0</b>	---	---
Molybdenum	ppm	ASTM D5185(m)		<b>0</b>	---	---
Manganese	ppm	ASTM D5185(m)		<b>0</b>	---	---
Magnesium	ppm	ASTM D5185(m)		<b>&lt;1</b>	---	---
Calcium	ppm	ASTM D5185(m)		<b>0</b>	---	---
Phosphorus	ppm	ASTM D5185(m)		<b>&lt;1</b>	---	---
Zinc	ppm	ASTM D5185(m)		<b>1</b>	---	---
Sulfur	ppm	ASTM D5185(m)		<b>16</b>	---	---
Lithium	ppm	ASTM D5185(m)		<b>&lt;1</b>	---	---

CONTAMINANTS		method	limit/base	current	history1	history2
Silicon	ppm	ASTM D5185(m)		<b>0</b>	---	---
Sodium	ppm	ASTM D5185(m)		<b>0</b>	---	---
Potassium	ppm	ASTM D5185(m)	>20	<b>0</b>	---	---
Water	%	ASTM D6304*		<b>0.005</b>	---	---
ppm Water	ppm	ASTM D6304*		<b>58</b>	---	---

FLUID DEGRADATION		method	limit/base	current	history1	history2
Acid Number (AN)	mg KOH/g	ASTM D974*		<b>0.57</b>	---	---



# OIL ANALYSIS REPORT

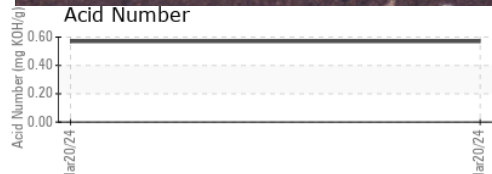
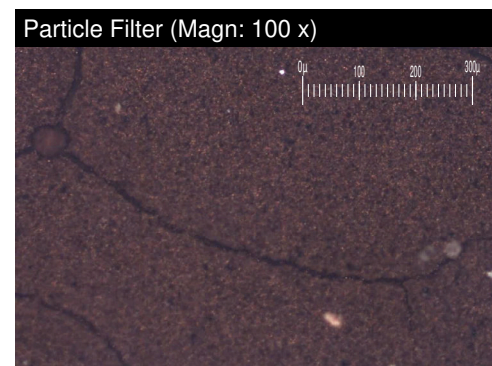
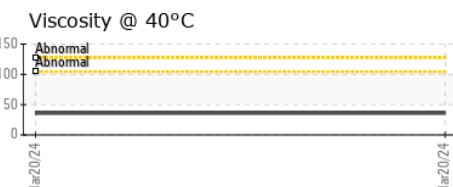
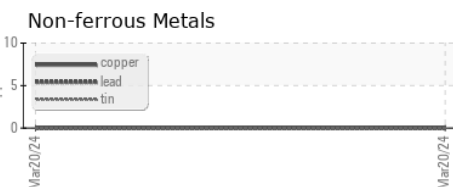
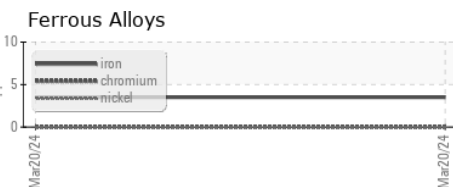


VISUAL	method	limit/base	current	history1	history2	
White Metal	scalar	Visual*	NONE	NONE	---	---
Yellow Metal	scalar	Visual*	NONE	NONE	---	---
Precipitate	scalar	Visual*	NONE	NONE	---	---
Silt	scalar	Visual*	NONE	▲ LTMOD	---	---
Debris	scalar	Visual*	NONE	NONE	---	---
Sand/Dirt	scalar	Visual*	NONE	NONE	---	---
Appearance	scalar	Visual*	NORML	NORML	---	---
Odor	scalar	Visual*	NORML	NORML	---	---
Emulsified Water	scalar	Visual*		NEG	---	---
Free Water	scalar	Visual*		NEG	---	---

FLUID PROPERTIES	method	limit/base	current	history1	history2
Visc @ 40°C	cSt	ASTM D7279(m)	36.0	---	---
Visc @ 100°C	cSt	ASTM D7279(m)	6.0	---	---
Viscosity Index (VI)	Scale	ASTM D2270*	111	---	---

SAMPLE IMAGES	method	limit/base	current	history1	history2
Color				no image	no image
Bottom				no image	no image
PrtFilter				no image	no image

## GRAPHS



**Laboratory** : WearCheck - C8-1175 Appleby Line, Burlington, ON L7L 5H9  
**Sample No.** : E30001760  
**Lab Number** : 02625703  
**Unique Number** : 5750822  
**Test Package** : IND 2 ( Additional Tests: KF, KV100, PrtCount, PRTFILTER, PrtFilterPrep, TAN & M&C)

**Environmental 360 Solutions Ltd.**  
 640 Victoria Street  
 Cobourg, ON  
 CA K9A 5H5  
 Contact: Tatiana Sorkina  
 tsorkina@e360s.ca  
 T: (800)263-3939  
 F: (905)373-4950

To discuss this sample report, contact Customer Service at 1-905-372-2251.  
 Test denoted (\*) outside scope of accreditation, (m) method modified, (e) tested at external lab.  
 Validity of results and interpretation are based on the sample and information as supplied.