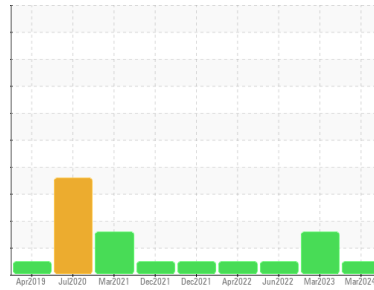




FUEL REPORT

Sample Rating Trend



NORMAL



Area
System 84 - Evacuation Facilities
 Machine Id
V-8401F LIFEBOAT #6
 Component
Diesel Fuel
 Fluid
No.2 DIESEL FUEL (ULTRALOW SULPHUR) (--- GAL)

DIAGNOSIS

Recommendation

Laboratory test indicate that this fuel is suitable for use and meets all test requirements. Resample at the next service interval to monitor.

Contaminants

There is no bacteria or fungus (yeast and/or mold) present in the sample. The system cleanliness is acceptable for your target ISO 4406 cleanliness code. The water content is negligible. There is no indication of any contamination in the diesel fuel.

Fuel Condition

All laboratory tests indicate that this sample meets specifications for No.2 ultra-low-sulfur diesel fuel (US EPA/CGSB-3.517-3 type B).

SAMPLE INFORMATION		method	limit/base	current	history1	history2
Sample Number	Client Info			PP	WC	PP
Sample Date	Client Info			31 Mar 2024	28 Mar 2023	20 Jun 2022
Machine Age	hrs	Client Info		0	0	0
Sample Status				NORMAL	ATTENTION	NORMAL

PHYSICAL PROPERTIES		method	limit/base	current	history1	history2
Specific Gravity		ASTM D1298*	0.839	0.837	0.836	0.842
Fuel Color	text	Visual Screen*	Yllow	Yllow	Yllow	Yllow
Visc @ 40°C	cSt	ASTM D7279(m)	3.0	2.7	2.6	2.5
Pensky-Martens Flash Point	°C	ASTM D7215*	52	64.4	62.2	66.5
Cloud Point	°C	ASTM D2500*		---	-13	-15

SULFUR CONTENT		method	limit/base	current	history1	history2
Sulfur	ppm	ASTM D5185(m)	10	7	7	10

DISTILLATION		method	limit/base	current	history1	history2
Initial Boiling Point	°C	ASTM D2887*	165	175	173	163
5% Distillation Point	°C	ASTM D2887*		195	193	195
10% Distill Point	°C	ASTM D2887*	201	206	205	206
15% Distillation Point	°C	ASTM D2887*		215	213	215
20% Distill Point	°C	ASTM D2887*	216	223	222	223
30% Distill Point	°C	ASTM D2887*	230	238	238	237
40% Distill Point	°C	ASTM D2887*	243	251	251	250
50% Distill Point	°C	ASTM D2887*	255	265	264	261
60% Distill Point	°C	ASTM D2887*	267	279	278	273
70% Distill Point	°C	ASTM D2887*	280	293	291	288
80% Distill Point	°C	ASTM D2887*	295	309	306	304
85% Distillation Point	°C	ASTM D2887*		320	317	313
90% Distill Point	°C	ASTM D2887*	310	331	328	324
95% Distillation Point	°C	ASTM D2887*		349	346	339
Final Boiling Point	°C	ASTM D2887*	341	376	368	346

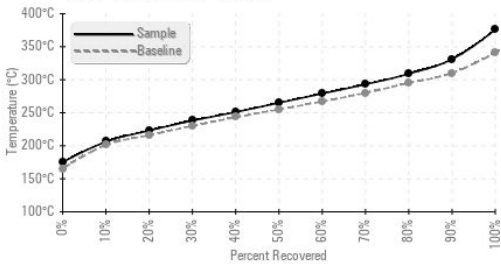
IGNITION QUALITY		method	limit/base	current	history1	history2
API Gravity		ASTM D1298*	37.7	37	37	36
Cetane Index		ASTM D4737*	<40.0	50	51	48

CONTAMINANTS		method	limit/base	current	history1	history2
Silicon	ppm	ASTM D5185(m)	<1.0	0	0	0
Sodium	ppm	ASTM D5185(m)	<0.1	0	0	0
Potassium	ppm	ASTM D5185(m)	<0.1	<1	0	0
Water	%	ASTM D6304*	<0.05	0.002	0.003	0.002
ppm Water	ppm	ASTM D6304*	<500	20	27.9	20.4
Sediment	%	ASTM D1796(e)*	<0.05	---	0.018	---

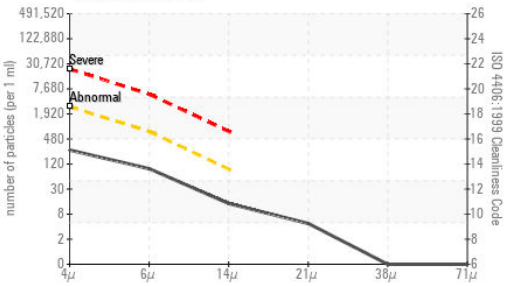


FUEL REPORT

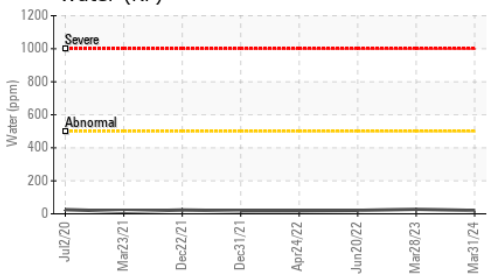
Fuel Distillation Curve



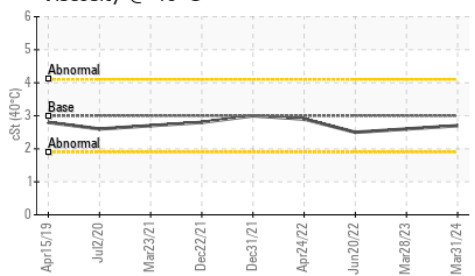
Particle Count



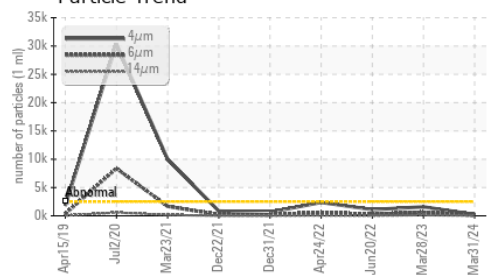
Water (KF)



Viscosity @ 40°C



Particle Trend

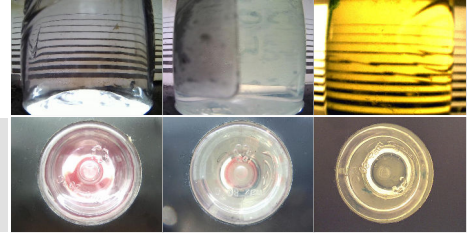


FLUID CLEANLINESS	method	limit/base	current	history1	history2
Particles >4µm	ASTM D7647	>2500	229	1586	1099
Particles >6µm	ASTM D7647	>640	82	643	260
Particles >14µm	ASTM D7647	>80	12	111	28
Particles >21µm	ASTM D7647	>20	4	36	8
Particles >38µm	ASTM D7647	>4	0	2	0
Particles >71µm	ASTM D7647	>3	0	0	0
Oil Cleanliness	ISO 4406 (c)	>18/16/13	15/14/11	18/17/14	17/15/12

MICROBIAL	method	limit/base	current	history1	history2
Bacteria	CFU/ml ASTM D6469*	>=100000	0	0	0
Yeast	CFU/ml ASTM D6469*	>=100000	0	0	0
Mold	Colonies ASTM D6469*	MODER	NONE	NONE	NONE

HEAVY METALS	method	limit/base	current	history1	history2
Aluminum	ppm ASTM D5185(m)	<0.1	0	0	0
Nickel	ppm ASTM D5185(m)	<0.1	0	0	0
Lead	ppm ASTM D5185(m)	<0.1	0	0	0
Vanadium	ppm ASTM D5185(m)	<0.1	0	0	0
Iron	ppm ASTM D5185(m)	<0.1	0	<1	<1
Calcium	ppm ASTM D5185(m)	<0.1	0	<1	0
Magnesium	ppm ASTM D5185(m)	<0.1	0	<1	<1
Phosphorus	ppm ASTM D5185(m)	<0.1	0	0	<1
Zinc	ppm ASTM D5185(m)	<0.1	0	<1	0

SAMPLE IMAGES	method	limit/base	current	history1	history2
Color					
Bottom					



Laboratory : WearCheck - C8-1175 Appleby Line, Burlington, ON L7L 5H9 **HIBERNIA MGMT & DEVELOPMENT CO. LTD**
Sample No. : PP **Received** : 01 Apr 2024 **SUITE 1000., 100 NEW GOWER STREET**
Lab Number : 02625819 **Tested** : 09 Apr 2024 **ST.JOHNS, NL**
Unique Number : 5750938 **Diagnosed** : 09 Apr 2024 - Kevin Marson **CA A1C 6K3**
Test Package : FUEL (Additional Tests: Bacteria, CC Flash, CldPt, PrtCount, Sediment) **Contact: Sam Nash**
samantha.m.nash@exxonmobil.com

To discuss this sample report, contact Customer Service at 1-800-268-2131.
 Test denoted (*) outside scope of accreditation, (m) method modified, (e) tested at external lab.
 Validity of results and interpretation are based on the sample and information as supplied.

T:
F: (709)722-3766