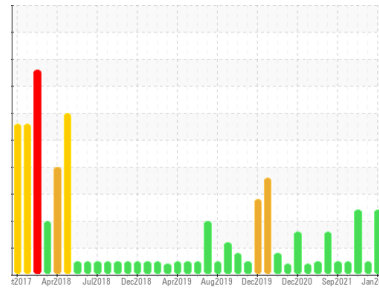




FUEL REPORT

Sample Rating Trend



WATER



Machine Id
ADT911230 TREATED DIESEL TANK NORTH
 Component
Diesel Fuel
 Fluid
No.2 DIESEL FUEL (ULTRALOW SULPHUR) (--- GAL)

DIAGNOSIS

Recommendation

We advise that you check for the source of water entry. We advise that you filter this fluid before use. We advise that you follow the water drain-off procedure for this component. We recommend you service the filters on this component. We recommend an early resample to monitor this condition.

Contaminants

There is a light amount of silt (particulates < 14 microns in size) present in the fuel. Free water present. There is no bacteria or fungus (yeast and/or mold) present in the sample.

Fuel Condition

All laboratory tests indicate that this sample meets specifications for No.2 ultra-low-sulfur diesel fuel (US EPA/CGSB-3.517-3 type B).

SAMPLE INFORMATION	method	limit/base	current	history1	history2
Sample Number	Client Info		PP13941989	PP13768376	PP13721641
Sample Date	Client Info		07 Jan 2024	15 Sep 2022	13 May 2022
Machine Age	hrs	Client Info	0	0	0
Sample Status			ABNORMAL	NORMAL	ABNORMAL

PHYSICAL PROPERTIES	method	limit/base	current	history1	history2
Specific Gravity	ASTM D1298*	0.839	0.848	0.842	0.845
Fuel Color	text	Visual Screen*	Yellow	Yellow	Yellow
Visc @ 40°C	cSt	ASTM D7279(m)	2.8	2.7	2.8
Pensky-Martens Flash Point	°C	ASTM D7215*	64.9	64.6	59

SULFUR CONTENT	method	limit/base	current	history1	history2
Sulfur	ppm	ASTM D5185(m)	7	8	9

DISTILLATION	method	limit/base	current	history1	history2
Initial Boiling Point	°C	ASTM D2887*	177	161	157
5% Distillation Point	°C	ASTM D2887*	201	193	187
10% Distill Point	°C	ASTM D2887*	212	205	199
15% Distillation Point	°C	ASTM D2887*	220	214	207
20% Distill Point	°C	ASTM D2887*	228	222	215
30% Distill Point	°C	ASTM D2887*	242	236	228
40% Distill Point	°C	ASTM D2887*	253	249	241
50% Distill Point	°C	ASTM D2887*	265	260	253
60% Distill Point	°C	ASTM D2887*	278	273	266
70% Distill Point	°C	ASTM D2887*	290	287	279
80% Distill Point	°C	ASTM D2887*	305	302	294
85% Distillation Point	°C	ASTM D2887*	316	312	303
90% Distill Point	°C	ASTM D2887*	327	322	314
95% Distillation Point	°C	ASTM D2887*	346	338	333
Final Boiling Point	°C	ASTM D2887*	373	347	347

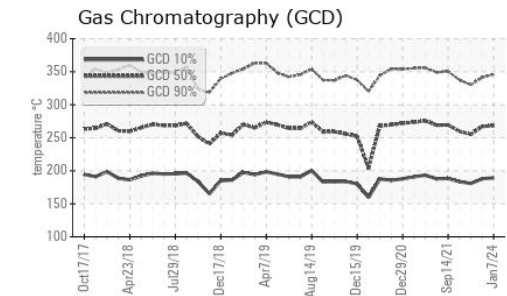
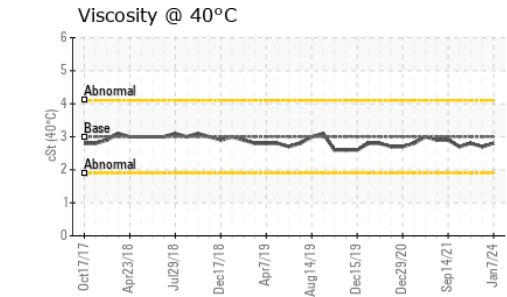
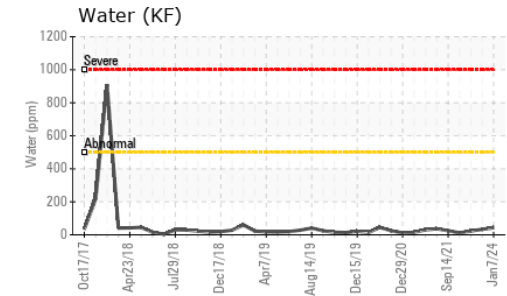
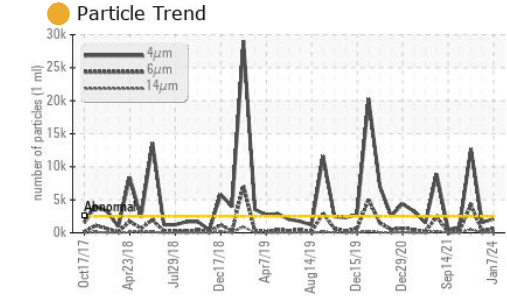
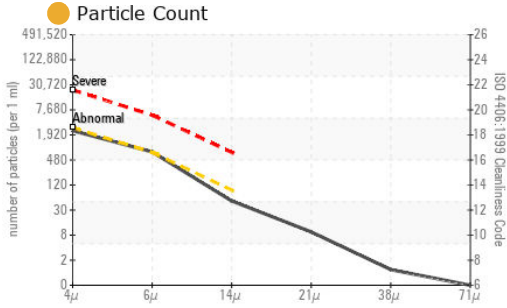
IGNITION QUALITY	method	limit/base	current	history1	history2
API Gravity	ASTM D1298*	37.7	35	36	35
Cetane Index	ASTM D4737*	<40.0	47	47	44

CONTAMINANTS	method	limit/base	current	history1	history2
Silicon	ppm	ASTM D5185(m)	0	0	0
Sodium	ppm	ASTM D5185(m)	<1	0	<1
Potassium	ppm	ASTM D5185(m)	0	0	0
Water	%	ASTM D6304*	0.004	0.003	0.002
ppm Water	ppm	ASTM D6304*	43	33.5	23.1

FLUID CLEANLINESS	method	limit/base	current	history1	history2
Particles >4µm	ASTM D7647	>2500	2120	1558	▲ 12725
Particles >6µm	ASTM D7647	>640	● 659	285	▲ 4233
Particles >14µm	ASTM D7647	>80	44	30	▲ 500
Particles >21µm	ASTM D7647	>20	8	11	▲ 124
Particles >38µm	ASTM D7647	>4	1	1	▲ 12
Particles >71µm	ASTM D7647	>3	0	0	2
Oil Cleanliness	ISO 4406 (c)	>18/16/13	● 18/17/13	18/15/12	▲ 21/19/16



FUEL REPORT

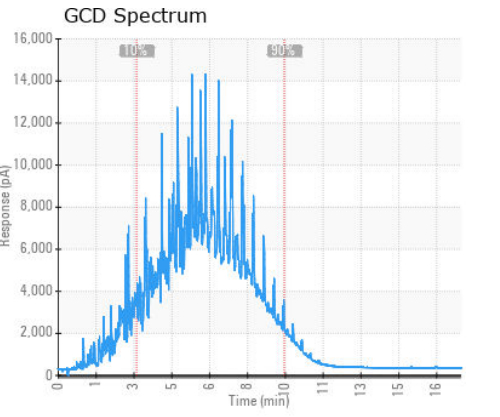
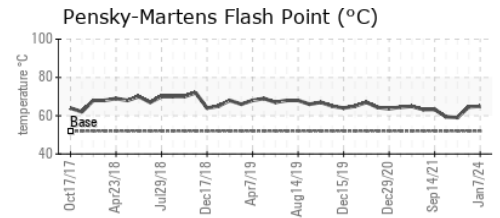
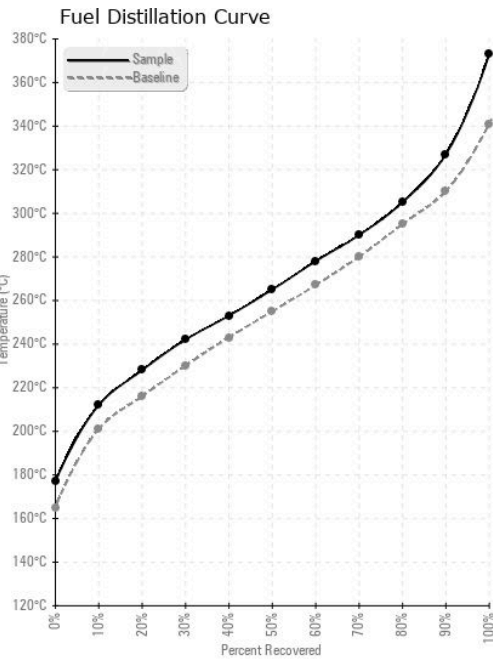


MICROBIAL	method	limit/base	current	history1	history2
Bacteria	CFU/ml ASTM D6469*	>=100000	0	---	---
Yeast	CFU/ml ASTM D6469*	>=100000	0	---	---
Mold	Colonies ASTM D6469*	MODER	NONE	---	---

HEAVY METALS	method	limit/base	current	history1	history2
Aluminum	ppm ASTM D5185(m)	<0.1	0	0	0
Nickel	ppm ASTM D5185(m)	<0.1	0	0	0
Lead	ppm ASTM D5185(m)	<0.1	0	0	0
Vanadium	ppm ASTM D5185(m)	<0.1	0	0	0
Iron	ppm ASTM D5185(m)	<0.1	0	<1	<1
Calcium	ppm ASTM D5185(m)	<0.1	0	<1	0
Magnesium	ppm ASTM D5185(m)	<0.1	0	0	0
Phosphorus	ppm ASTM D5185(m)	<0.1	0	0	0
Zinc	ppm ASTM D5185(m)	<0.1	0	<1	0

SAMPLE IMAGES	method	limit/base	current	history1	history2
Color					
Bottom					

GRAPHS



Laboratory : WearCheck - C8-1175 Appleby Line, Burlington, ON L7L 5H9
Sample No. : PP13941989
Lab Number : **02625827**
Unique Number : 5750946
Test Package : FUEL (Additional Tests: Bacteria, CC Flash, PrtCount)

ExxonMobil Canada East Ltd.
 Hebron-Materials and Repair Coordin, Suite 1000, 100 New Gow
 St. John's, NL
 CA A1C 6K3
 Contact: Liam Maher
 liam.m.maher@exxonmobil.com
 T: (709)273-3729
 F:

To discuss this sample report, contact Customer Service at 1-800-268-2131.
 Test denoted (*) outside scope of accreditation, (m) method modified, (e) tested at external lab.
 Validity of results and interpretation are based on the sample and information as supplied.