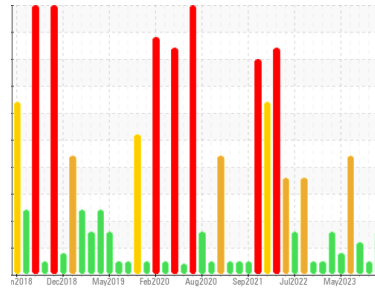




FUEL REPORT

Sample Rating Trend



ISO



Machine Id
TDT411202C DIESEL DAY TANK FIRE WATER PUMP C

Component
Diesel Fuel
Fluid

No.2 DIESEL FUEL (ULTRALOW SULPHUR) (--- GAL)

DIAGNOSIS

Recommendation

Laboratory test indicate that this fuel is suitable for use and meets all test requirements. We advise that you filter this fluid before use. We recommend you service the filters on this component. We recommend an early resample to monitor this condition.

Contaminants

There is a moderate amount of silt (particulates < 14 microns in size) present in the fuel. The water content is negligible.

Fuel Condition

All laboratory tests indicate that this sample meets specifications for No.2 ultra-low-sulfur diesel fuel (US EPA/CGSB-3.517-3 type B). The fuel is still serviceable provided that the contaminant(s) can be reduced to acceptable levels.

SAMPLE INFORMATION

method	limit/base	current	history1	history2
Sample Number	Client Info	PP13941989	PP13920747	PP13899605
Sample Date	Client Info	07 Jan 2024	07 Nov 2023	06 Aug 2023
Machine Age	hrs	0	0	0
Sample Status		ABNORMAL	NORMAL	ATTENTION

PHYSICAL PROPERTIES

method	limit/base	current	history1	history2		
Specific Gravity	ASTM D1298*	0.839	0.843	0.842	0.841	
Fuel Color	text	Visual Screen*	Yellow	Yellow	Yellow	
Visc @ 40°C	cSt	ASTM D7279(m)	3.0	2.9	2.7	2.7
Pensky-Martens Flash Point	°C	ASTM D7215*	52	69.4	66.9	74.1

SULFUR CONTENT

method	limit/base	current	history1	history2		
Sulfur	ppm	ASTM D5185(m)	10	8	9	8

DISTILLATION

method	limit/base	current	history1	history2		
Initial Boiling Point	°C	ASTM D2887*	165	181	178	186
5% Distillation Point	°C	ASTM D2887*		201	198	206
10% Distill Point	°C	ASTM D2887*	201	212	209	215
15% Distillation Point	°C	ASTM D2887*		220	217	222
20% Distill Point	°C	ASTM D2887*	216	228	226	229
30% Distill Point	°C	ASTM D2887*	230	242	241	243
40% Distill Point	°C	ASTM D2887*	243	255	253	255
50% Distill Point	°C	ASTM D2887*	255	268	266	267
60% Distill Point	°C	ASTM D2887*	267	281	280	280
70% Distill Point	°C	ASTM D2887*	280	295	293	293
80% Distill Point	°C	ASTM D2887*	295	310	309	307
85% Distillation Point	°C	ASTM D2887*		321	320	317
90% Distill Point	°C	ASTM D2887*	310	332	331	327
95% Distillation Point	°C	ASTM D2887*		351	350	345
Final Boiling Point	°C	ASTM D2887*	341	379	374	365

IGNITION QUALITY

method	limit/base	current	history1	history2	
API Gravity	ASTM D1298*	37.7	36	36	36
Cetane Index	ASTM D4737*	<40.0	49	49	50

CONTAMINANTS

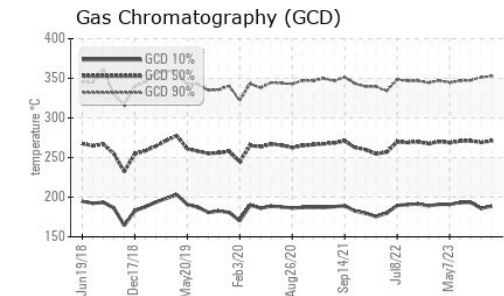
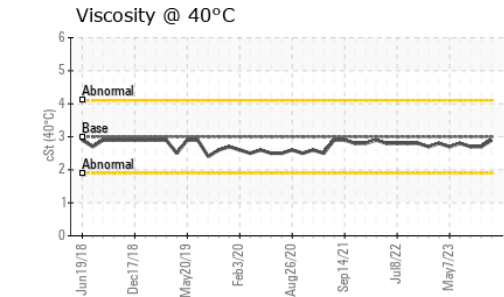
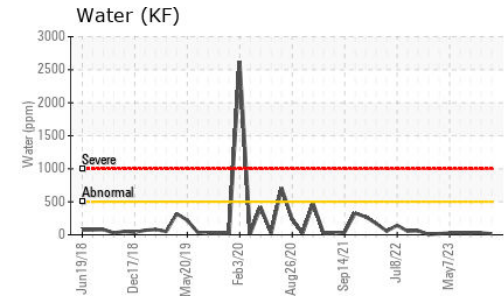
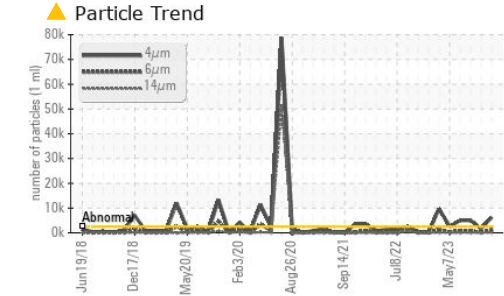
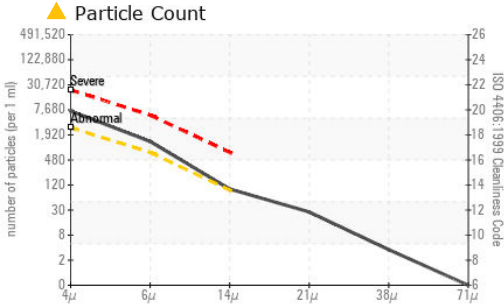
method	limit/base	current	history1	history2		
Silicon	ppm	ASTM D5185(m)	<1.0	0	0	0
Sodium	ppm	ASTM D5185(m)	<0.1	<1	0	0
Potassium	ppm	ASTM D5185(m)	<0.1	0	<1	<1
Water	%	ASTM D6304*	<0.05	0.002	0.003	0.002
ppm Water	ppm	ASTM D6304*	<500	16	29	24.2

FLUID CLEANLINESS

method	limit/base	current	history1	history2	
Particles >4µm	ASTM D7647	>2500	▲ 6252	1624	● 4968
Particles >6µm	ASTM D7647	>640	● 1168	219	● 706
Particles >14µm	ASTM D7647	>80	● 85	8	47
Particles >21µm	ASTM D7647	>20	24	2	15
Particles >38µm	ASTM D7647	>4	3	0	0
Particles >71µm	ASTM D7647	>3	0	0	0
Oil Cleanliness	ISO 4406 (c)	>18/16/13	▲ 20/17/14	18/15/10	● 19/17/13

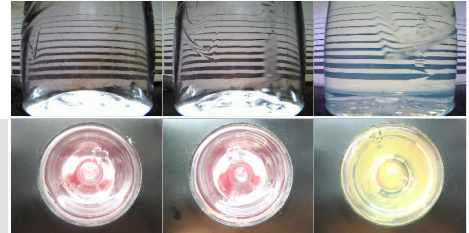


FUEL REPORT

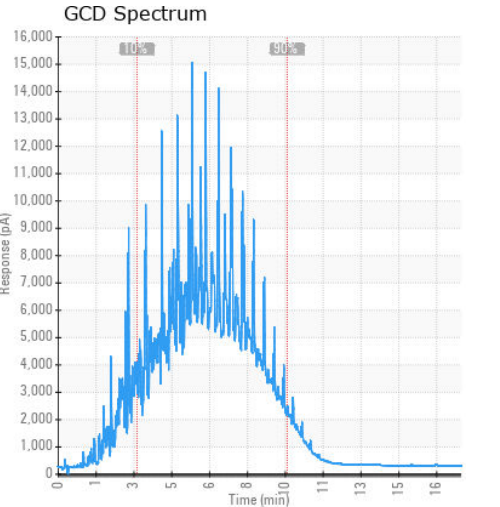
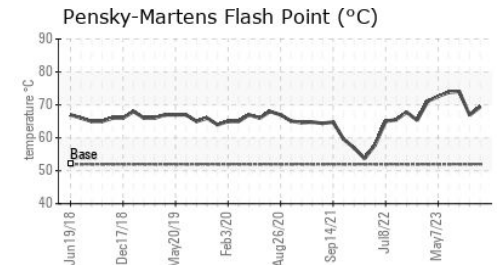
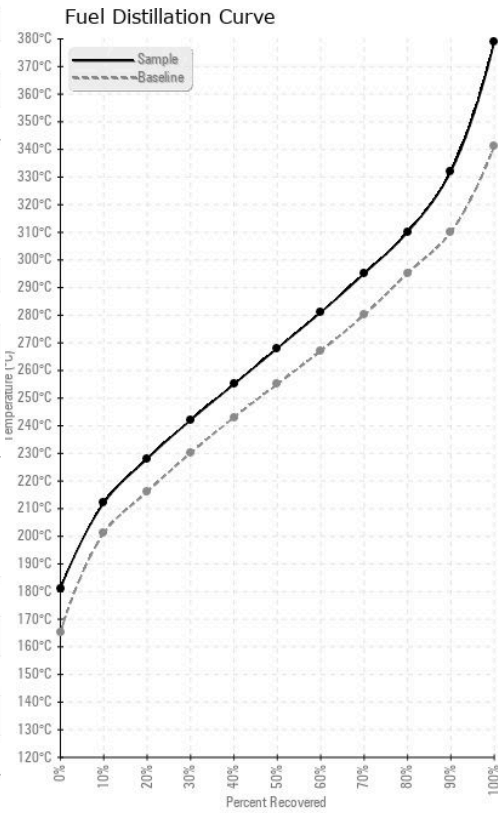


HEAVY METALS	method	limit/base	current	history1	history2
Aluminum	ppm	ASTM D5185(m)	<0.1	0	0
Nickel	ppm	ASTM D5185(m)	<0.1	0	0
Lead	ppm	ASTM D5185(m)	<0.1	0	0
Vanadium	ppm	ASTM D5185(m)	<0.1	0	0
Iron	ppm	ASTM D5185(m)	<0.1	<1	<1
Calcium	ppm	ASTM D5185(m)	<0.1	0	0
Magnesium	ppm	ASTM D5185(m)	<0.1	0	0
Phosphorus	ppm	ASTM D5185(m)	<0.1	<1	0
Zinc	ppm	ASTM D5185(m)	<0.1	0	0

SAMPLE IMAGES	method	limit/base	current	history1	history2
Color					
Bottom					



GRAPHS



Laboratory : WearCheck - C8-1175 Appleby Line, Burlington, ON L7L 5H9
Sample No. : PP13941989 **Received** : 01 Apr 2024
Lab Number : 02625830 **Tested** : 03 Apr 2024
Unique Number : 5750949 **Diagnosed** : 03 Apr 2024 - Kevin Marson
Test Package : FUEL (Additional Tests: CC Flash, PrtCount)

ExxonMobil Canada East Ltd.
 Hebron-Materials and Repair Coordin, Suite 1000, 100 New Gow
 St. John's, NL
 CA A1C 6K3
 Contact: Liam Maher
 liam.m.maher@exxonmobil.com
 T: (709)273-3729
 F:

To discuss this sample report, contact Customer Service at 1-800-268-2131.
 Test denoted (*) outside scope of accreditation, (m) method modified, (e) tested at external lab.
 Validity of results and interpretation are based on the sample and information as supplied.