



FUEL REPORT

Sample Rating Trend

ISO

Area

A21

Machine Id

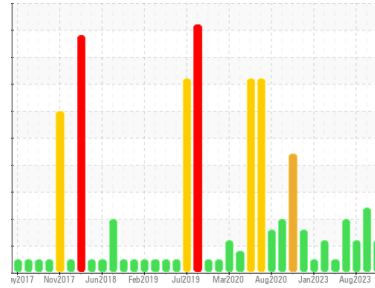
ADT911215 TANK RAW DIESEL NE PEDESTAL CRANE

Component

Diesel Fuel

Fluid

No.2 DIESEL FUEL (ULTRALOW SULPHUR) (260000 LTR)



DIAGNOSIS

Recommendation

Laboratory test indicate that this fuel is suitable for use and meets all test requirements. We advise that you filter this fluid before use. We recommend you service the filters on this component. Resample at the next service interval to monitor.

Contaminants

There is a light amount of silt (particulates < 14 microns in size) present in the fuel. The water content is negligible.

Fuel Condition

All laboratory tests indicate that this sample meets specifications for No.2 ultra-low-sulfur diesel fuel (US EPA/CGSB-3.517-3 type B).

SAMPLE INFORMATION

method	limit/base	current	history1	history2
Sample Number	Client Info	PP13941989	PP13920747	PP13899605
Sample Date	Client Info	07 Jan 2024	07 Nov 2023	06 Aug 2023
Machine Age	hrs	0	0	0
Sample Status		ATTENTION	ABNORMAL	ATTENTION

PHYSICAL PROPERTIES

method	limit/base	current	history1	history2		
Specific Gravity	ASTM D1298*	0.839	0.853	0.848	0.837	
Fuel Color	text	Visual Screen*	Yellow	Yellow	Yellow	
Visc @ 40°C	cSt	ASTM D7279(m)	3.0	2.9	2.7	2.6
Pensky-Martens Flash Point	°C	ASTM D7215*	52	67	64.7	62.4

SULFUR CONTENT

method	limit/base	current	history1	history2		
Sulfur	ppm	ASTM D5185(m)	10	7	8	6

DISTILLATION

method	limit/base	current	history1	history2		
Initial Boiling Point	°C	ASTM D2887*	165	178	176	173
5% Distillation Point	°C	ASTM D2887*		205	200	195
10% Distill Point	°C	ASTM D2887*	201	215	211	207
15% Distillation Point	°C	ASTM D2887*		223	219	215
20% Distill Point	°C	ASTM D2887*	216	232	227	224
30% Distill Point	°C	ASTM D2887*	230	245	240	240
40% Distill Point	°C	ASTM D2887*	243	256	252	253
50% Distill Point	°C	ASTM D2887*	255	267	264	266
60% Distill Point	°C	ASTM D2887*	267	279	277	280
70% Distill Point	°C	ASTM D2887*	280	291	290	294
80% Distill Point	°C	ASTM D2887*	295	304	305	310
85% Distillation Point	°C	ASTM D2887*		315	317	320
90% Distill Point	°C	ASTM D2887*	310	326	329	331
95% Distillation Point	°C	ASTM D2887*		345	350	349
Final Boiling Point	°C	ASTM D2887*	341	372	383	364

IGNITION QUALITY

method	limit/base	current	history1	history2	
API Gravity	ASTM D1298*	37.7	34	35	37
Cetane Index	ASTM D4737*	<40.0	45	46	51

CONTAMINANTS

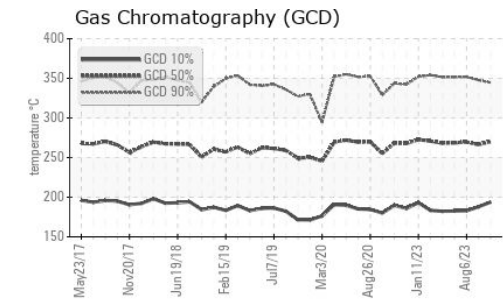
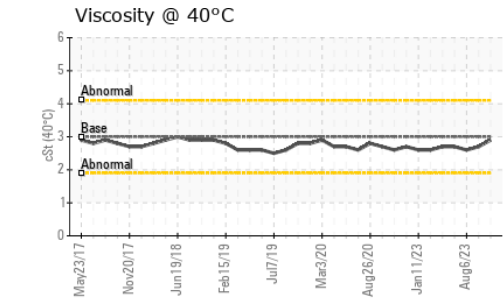
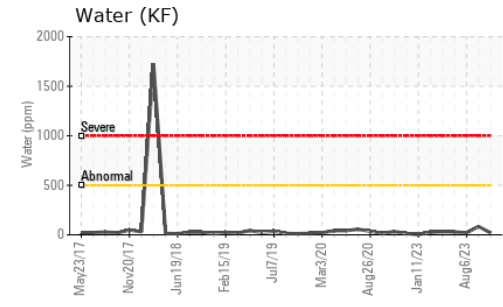
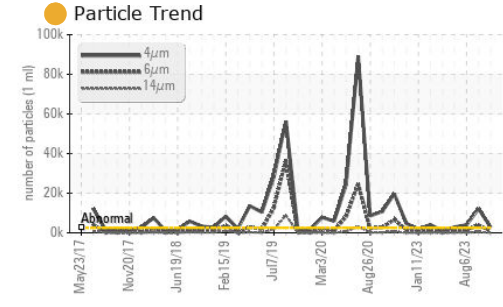
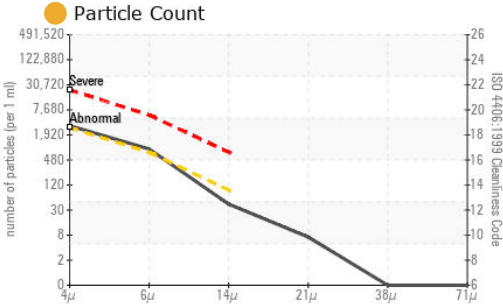
method	limit/base	current	history1	history2		
Silicon	ppm	ASTM D5185(m)	<1.0	0	0	0
Sodium	ppm	ASTM D5185(m)	<0.1	<1	0	0
Potassium	ppm	ASTM D5185(m)	<0.1	0	<1	<1
Water	%	ASTM D6304*	<0.05	0.002	0.008	0.002
ppm Water	ppm	ASTM D6304*	<500	20	83	20.2

FLUID CLEANLINESS

method	limit/base	current	history1	history2	
Particles >4µm	ASTM D7647	>2500	2793	12128	4057
Particles >6µm	ASTM D7647	>640	771	3968	1203
Particles >14µm	ASTM D7647	>80	37	372	77
Particles >21µm	ASTM D7647	>20	6	130	12
Particles >38µm	ASTM D7647	>4	0	8	0
Particles >71µm	ASTM D7647	>3	0	0	0
Oil Cleanliness	ISO 4406 (c)	>18/16/13	19/17/12	21/19/16	19/17/13

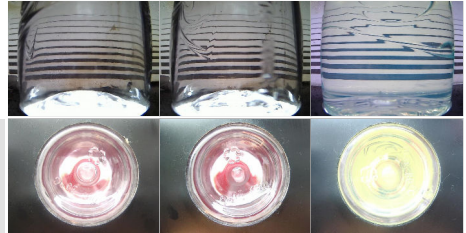


FUEL REPORT

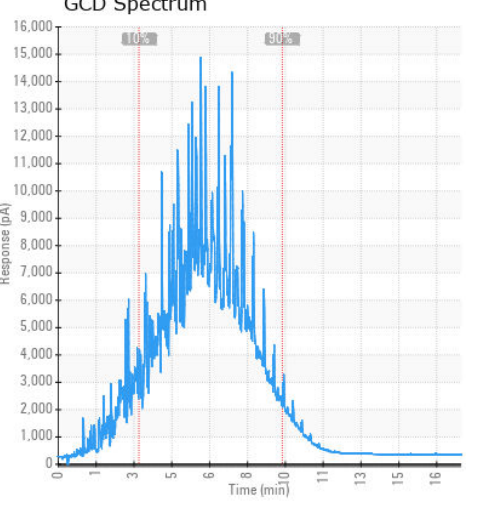
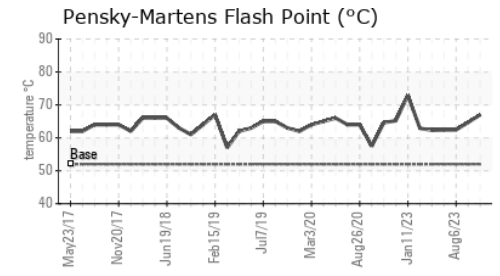
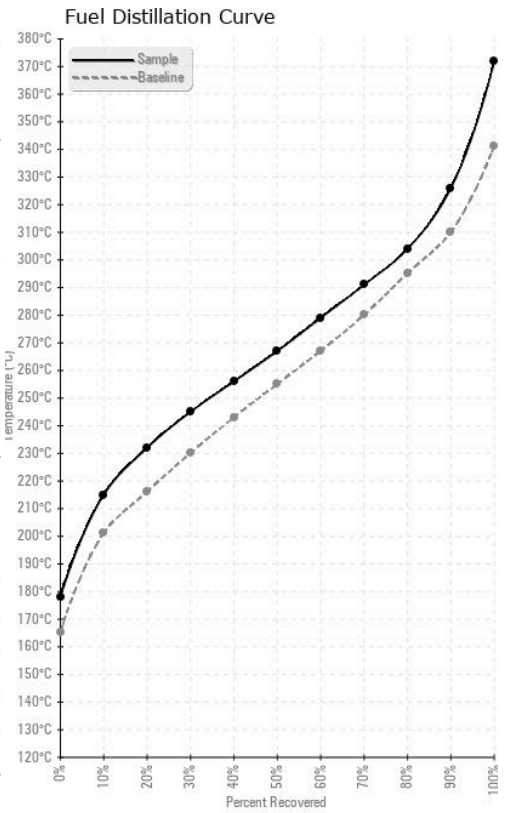


HEAVY METALS	method	limit/base	current	history1	history2
Aluminum	ppm	ASTM D5185(m)	<0.1	0	0
Nickel	ppm	ASTM D5185(m)	<0.1	0	0
Lead	ppm	ASTM D5185(m)	<0.1	0	0
Vanadium	ppm	ASTM D5185(m)	<0.1	0	0
Iron	ppm	ASTM D5185(m)	<0.1	<1	<1
Calcium	ppm	ASTM D5185(m)	<0.1	0	0
Magnesium	ppm	ASTM D5185(m)	<0.1	0	0
Phosphorus	ppm	ASTM D5185(m)	<0.1	0	0
Zinc	ppm	ASTM D5185(m)	<0.1	0	0

SAMPLE IMAGES	method	limit/base	current	history1	history2
Color					
Bottom					



GRAPHS



Laboratory : WearCheck - C8-1175 Appleby Line, Burlington, ON L7L 5H9
Sample No. : PP13941989 **Received** : 01 Apr 2024
Lab Number : 02625835 **Tested** : 03 Apr 2024
Unique Number : 5750954 **Diagnosed** : 03 Apr 2024 - Kevin Marson
Test Package : FUEL (Additional Tests: CC Flash, PrtCount)

ExxonMobil Canada East Ltd.
 Hebron-Materials and Repair Coordin, Suite 1000, 100 New Gow
 St. John's, NL
 CA A1C 6K3
 Contact: Liam Maher
 liam.m.maher@exxonmobil.com
 T: (709)273-3729
 F:

To discuss this sample report, contact Customer Service at 1-800-268-2131.
 Test denoted (*) outside scope of accreditation, (m) method modified, (e) tested at external lab.
 Validity of results and interpretation are based on the sample and information as supplied.