



FUEL REPORT

Sample Rating Trend

NORMAL



Area

A22

Machine Id

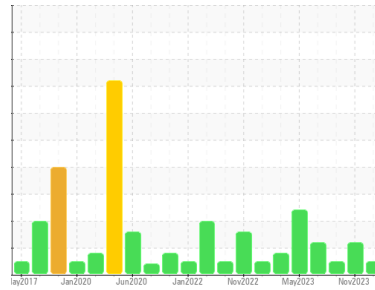
ADT911230 TANK TREATED DIESEL UPPER DECK

Component

Diesel Fuel

Fluid

No.2 DIESEL FUEL (ULTRALOW SULPHUR) (418000 LTR)



DIAGNOSIS

Recommendation

Laboratory test indicate that this fuel is suitable for use and meets all test requirements. Resample at the next service interval to monitor.

Contaminants

The system cleanliness is acceptable for your target ISO 4406 cleanliness code. The water content is negligible. There is no indication of any contamination in the diesel fuel.

Fuel Condition

All laboratory tests indicate that this sample meets specifications for No.2 ultra-low-sulfur diesel fuel (US EPA/CGSB-3.517-3 type B).

SAMPLE INFORMATION		method	limit/base	current	history1	history2
Sample Number	Client Info			PP13964294	PP13920747	PP13899605
Sample Date	Client Info			15 Mar 2024	07 Nov 2023	06 Aug 2023
Machine Age	hrs	Client Info		0	0	0
Sample Status				NORMAL	ATTENTION	NORMAL

PHYSICAL PROPERTIES		method	limit/base	current	history1	history2
Specific Gravity		ASTM D1298*	0.839	0.851	0.847	0.837
Fuel Color	text	Visual Screen*	Yellow	Yellow	Yellow	Yellow
Visc @ 40°C	cSt	ASTM D7279(m)	3.0	2.9	2.8	2.8
Pensky-Martens Flash Point	°C	ASTM D7215*	52	65.6	63.6	64.7

SULFUR CONTENT		method	limit/base	current	history1	history2
Sulfur	ppm	ASTM D5185(m)	10	7	9	6

DISTILLATION		method	limit/base	current	history1	history2
Initial Boiling Point	°C	ASTM D2887*	165	177	175	176
5% Distillation Point	°C	ASTM D2887*		203	199	197
10% Distill Point	°C	ASTM D2887*	201	214	210	208
15% Distillation Point	°C	ASTM D2887*		222	219	216
20% Distill Point	°C	ASTM D2887*	216	230	227	225
30% Distill Point	°C	ASTM D2887*	230	244	241	241
40% Distill Point	°C	ASTM D2887*	243	255	254	254
50% Distill Point	°C	ASTM D2887*	255	267	266	268
60% Distill Point	°C	ASTM D2887*	267	279	279	282
70% Distill Point	°C	ASTM D2887*	280	292	293	296
80% Distill Point	°C	ASTM D2887*	295	306	308	312
85% Distillation Point	°C	ASTM D2887*		317	320	324
90% Distill Point	°C	ASTM D2887*	310	328	331	335
95% Distillation Point	°C	ASTM D2887*		347	351	354
Final Boiling Point	°C	ASTM D2887*	341	375	379	385

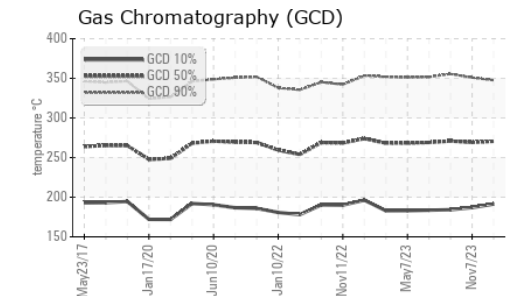
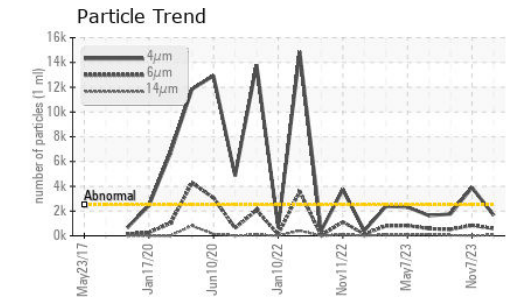
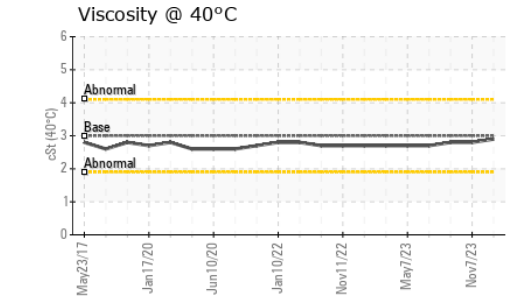
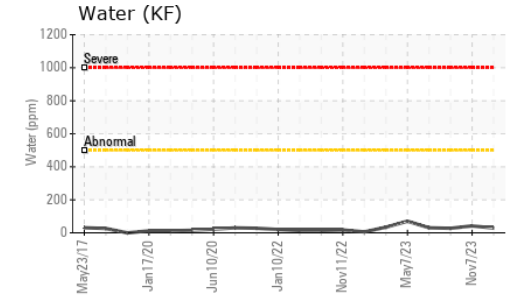
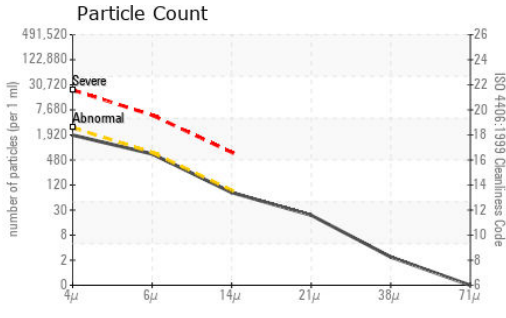
IGNITION QUALITY		method	limit/base	current	history1	history2
API Gravity		ASTM D1298*	37.7	34	35	37
Cetane Index		ASTM D4737*	<40.0	46	47	51

CONTAMINANTS		method	limit/base	current	history1	history2
Silicon	ppm	ASTM D5185(m)	<1.0	0	0	0
Sodium	ppm	ASTM D5185(m)	<0.1	<1	0	0
Potassium	ppm	ASTM D5185(m)	<0.1	0	<1	<1
Water	%	ASTM D6304*	<0.05	0.003	0.004	0.003
ppm Water	ppm	ASTM D6304*	<500	29	42	27.3

FLUID CLEANLINESS		method	limit/base	current	history1	history2
Particles >4µm		ASTM D7647	>2500	1663	● 3895	1766
Particles >6µm		ASTM D7647	>640	588	● 836	522
Particles >14µm		ASTM D7647	>80	70	18	49
Particles >21µm		ASTM D7647	>20	20	3	11
Particles >38µm		ASTM D7647	>4	2	0	0
Particles >71µm		ASTM D7647	>3	0	0	0
Oil Cleanliness		ISO 4406 (c)	>18/16/13	18/16/13	● 19/17/11	18/16/13

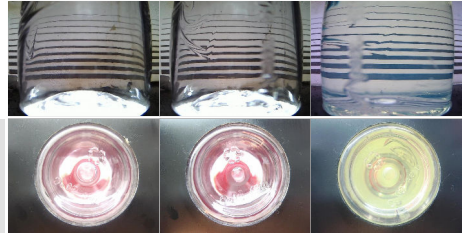


FUEL REPORT

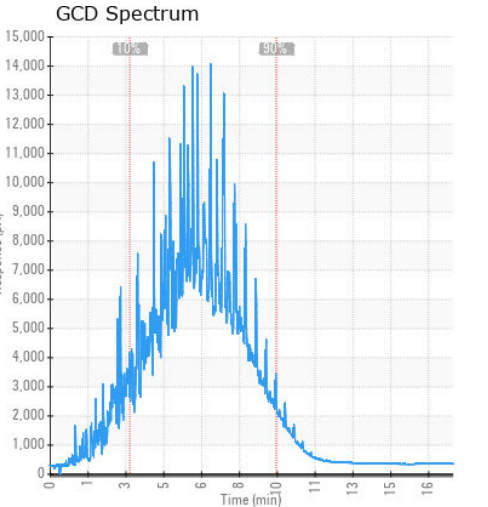
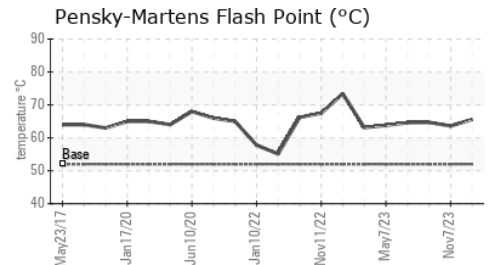
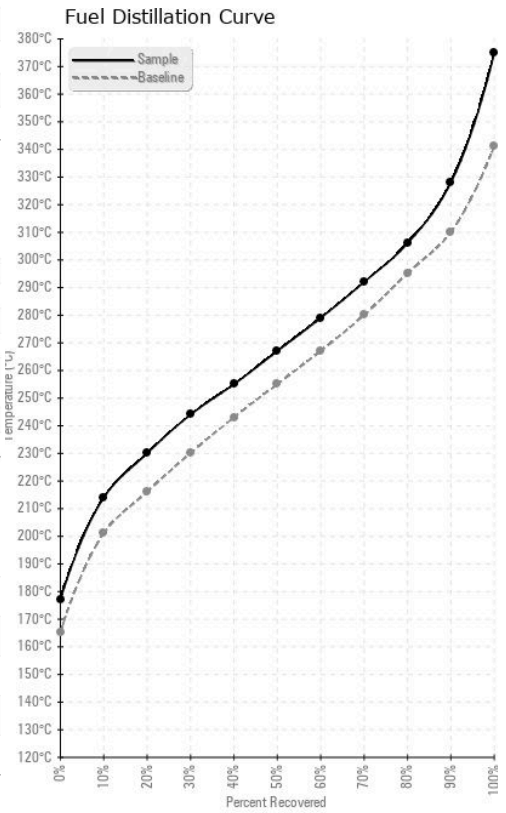


HEAVY METALS	method	limit/base	current	history1	history2
Aluminum	ppm	ASTM D5185(m)	<0.1	0	0
Nickel	ppm	ASTM D5185(m)	<0.1	0	0
Lead	ppm	ASTM D5185(m)	<0.1	0	0
Vanadium	ppm	ASTM D5185(m)	<0.1	0	0
Iron	ppm	ASTM D5185(m)	<0.1	<1	<1
Calcium	ppm	ASTM D5185(m)	<0.1	0	0
Magnesium	ppm	ASTM D5185(m)	<0.1	0	0
Phosphorus	ppm	ASTM D5185(m)	<0.1	0	0
Zinc	ppm	ASTM D5185(m)	<0.1	0	0

SAMPLE IMAGES	method	limit/base	current	history1	history2
Color					
Bottom					



GRAPHS



Laboratory : WearCheck - C8-1175 Appleby Line, Burlington, ON L7L 5H9
Sample No. : PP13964294
Lab Number : 02625842
Unique Number : 5758974
Test Package : FUEL (Additional Tests: CC Flash, PrtCount)
Received : 01 Apr 2024
Tested : 03 Apr 2024
Diagnosed : 03 Apr 2024 - Kevin Marson

ExxonMobil Canada East Ltd.
 Hebron-Materials and Repair Coordin, Suite 1000, 100 New Gow
 St. John's, NL
 CA A1C 6K3
 Contact: Liam Maher
 liam.m.maher@exxonmobil.com
 T: (709)273-3729
 F:

To discuss this sample report, contact Customer Service at 1-800-268-2131.
 Test denoted (*) outside scope of accreditation, (m) method modified, (e) tested at external lab.
 Validity of results and interpretation are based on the sample and information as supplied.