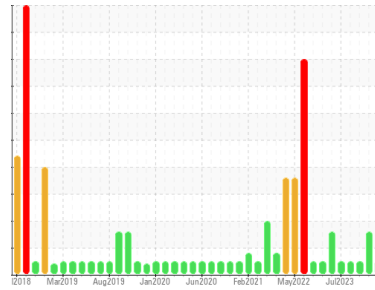




FUEL REPORT

Sample Rating Trend



NORMAL



Machine Id
TDT837271 DIESEL DAY TANK SPG4160B

Component
Diesel Fuel
Fluid

No.2 DIESEL FUEL (ULTRALOW SULPHUR) (--- GAL)

DIAGNOSIS

Recommendation

Laboratory test indicate that this fuel is suitable for use and meets all test requirements. Resample at the next service interval to monitor.

Contaminants

The system cleanliness is acceptable for your target ISO 4406 cleanliness code. The water content is negligible. There is no indication of any contamination in the diesel fuel.

Fuel Condition

All laboratory tests indicate that this sample meets specifications for No.2 ultra-low-sulfur diesel fuel (US EPA/CGSB-3.517-3 type B).

SAMPLE INFORMATION		method	limit/base	current	history1	history2
Sample Number	Client Info			PP13964294	PP13941989	PP13920747
Sample Date	Client Info			15 Mar 2024	07 Jan 2024	07 Nov 2023
Machine Age	hrs	Client Info		0	0	0
Sample Status				NORMAL	ATTENTION	NORMAL

PHYSICAL PROPERTIES		method	limit/base	current	history1	history2
Specific Gravity		ASTM D1298*	0.839	0.843	0.849	0.841
Fuel Color	text	Visual Screen*	Yllow	Yllow	Yllow	Yllow
Visc @ 40°C	cSt	ASTM D7279(m)	3.0	2.8	2.8	2.8
Pensky-Martens Flash Point	°C	ASTM D7215*	52	63.1	62.7	64.4

SULFUR CONTENT		method	limit/base	current	history1	history2
Sulfur	ppm	ASTM D5185(m)	10	8	8	8

DISTILLATION		method	limit/base	current	history1	history2
Initial Boiling Point	°C	ASTM D2887*	165	174	174	175
5% Distillation Point	°C	ASTM D2887*		198	197	197
10% Distill Point	°C	ASTM D2887*	201	210	208	208
15% Distillation Point	°C	ASTM D2887*		218	217	217
20% Distill Point	°C	ASTM D2887*	216	226	226	225
30% Distill Point	°C	ASTM D2887*	230	242	241	241
40% Distill Point	°C	ASTM D2887*	243	254	254	254
50% Distill Point	°C	ASTM D2887*	255	267	267	267
60% Distill Point	°C	ASTM D2887*	267	280	280	281
70% Distill Point	°C	ASTM D2887*	280	294	294	295
80% Distill Point	°C	ASTM D2887*	295	309	309	310
85% Distillation Point	°C	ASTM D2887*		320	320	321
90% Distill Point	°C	ASTM D2887*	310	331	331	333
95% Distillation Point	°C	ASTM D2887*		350	350	351
Final Boiling Point	°C	ASTM D2887*	341	378	375	376

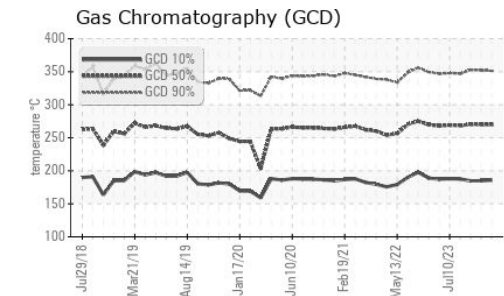
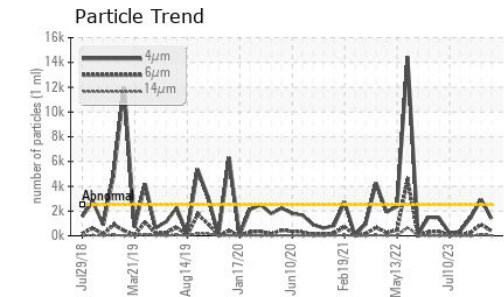
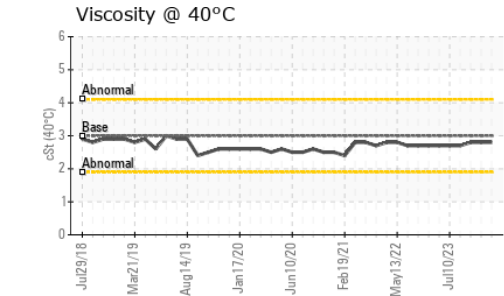
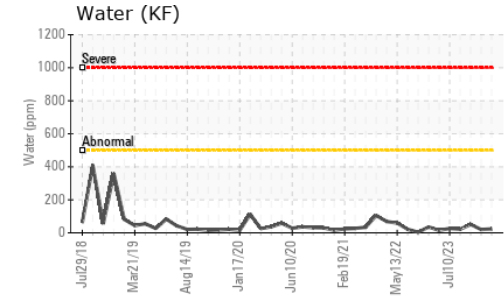
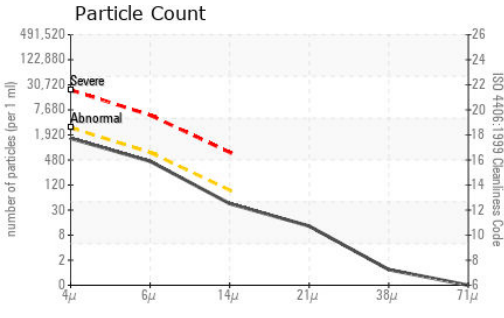
IGNITION QUALITY		method	limit/base	current	history1	history2
API Gravity		ASTM D1298*	37.7	36	35	36
Cetane Index		ASTM D4737*	<40.0	49	46	49

CONTAMINANTS		method	limit/base	current	history1	history2
Silicon	ppm	ASTM D5185(m)	<1.0	0	0	0
Sodium	ppm	ASTM D5185(m)	<0.1	<1	<1	0
Potassium	ppm	ASTM D5185(m)	<0.1	0	0	<1
Water	%	ASTM D6304*	<0.05	0.002	0.002	0.005
ppm Water	ppm	ASTM D6304*	<500	24	20	51

FLUID CLEANLINESS		method	limit/base	current	history1	history2
Particles >4µm		ASTM D7647	>2500	1388	● 2940	1454
Particles >6µm		ASTM D7647	>640	392	● 917	262
Particles >14µm		ASTM D7647	>80	38	● 94	6
Particles >21µm		ASTM D7647	>20	11	26	2
Particles >38µm		ASTM D7647	>4	1	3	0
Particles >71µm		ASTM D7647	>3	0	0	0
Oil Cleanliness		ISO 4406 (c)	>18/16/13	18/16/12	● 19/17/14	18/15/10



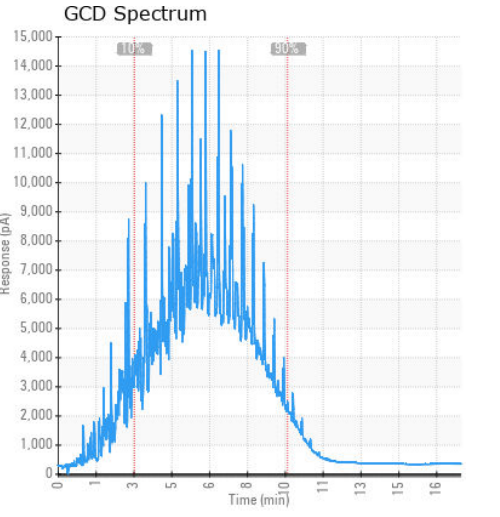
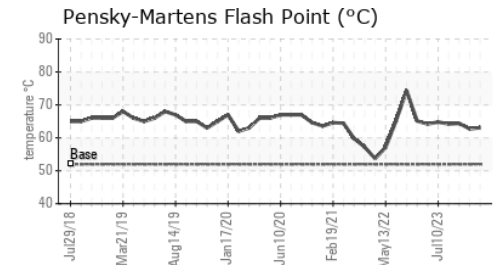
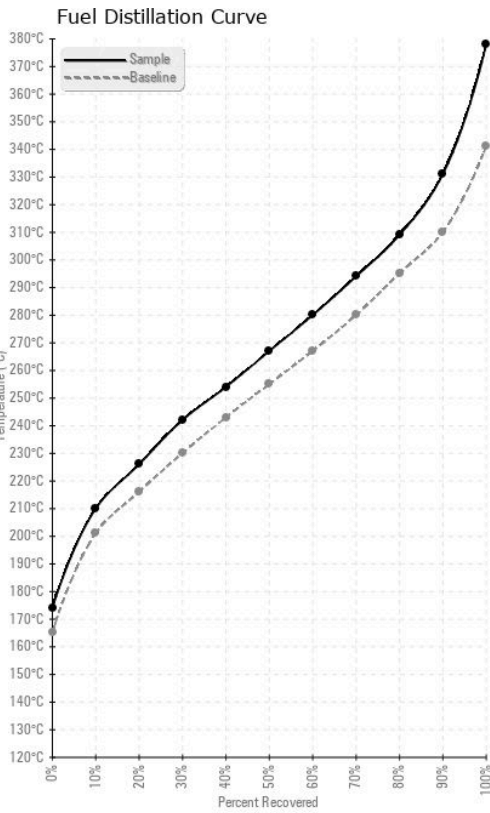
FUEL REPORT



HEAVY METALS	method	limit/base	current	history1	history2
Aluminum	ppm	ASTM D5185(m)	<0.1	0	0
Nickel	ppm	ASTM D5185(m)	<0.1	0	0
Lead	ppm	ASTM D5185(m)	<0.1	0	0
Vanadium	ppm	ASTM D5185(m)	<0.1	0	0
Iron	ppm	ASTM D5185(m)	<0.1	0	<1
Calcium	ppm	ASTM D5185(m)	<0.1	<1	0
Magnesium	ppm	ASTM D5185(m)	<0.1	0	0
Phosphorus	ppm	ASTM D5185(m)	<0.1	<1	<1
Zinc	ppm	ASTM D5185(m)	<0.1	0	0

SAMPLE IMAGES	method	limit/base	current	history1	history2
Color					
Bottom					

GRAPHS



Laboratory : WearCheck - C8-1175 Appleby Line, Burlington, ON L7L 5H9
Sample No. : PP13964294 **Received** : 01 Apr 2024
Lab Number : 02625845 **Tested** : 03 Apr 2024
Unique Number : 5758977 **Diagnosed** : 03 Apr 2024 - Kevin Marson
Test Package : FUEL (Additional Tests: CC Flash, PrtCount)

ExxonMobil Canada East Ltd.
 Hebron-Materials and Repair Coordin, Suite 1000, 100 New Gow
 St. John's, NL
 CA A1C 6K3
 Contact: Liam Maher
 liam.m.maher@exxonmobil.com
 T: (709)273-3729
 F:

To discuss this sample report, contact Customer Service at 1-800-268-2131.
 Test denoted (*) outside scope of accreditation, (m) method modified, (e) tested at external lab.
 Validity of results and interpretation are based on the sample and information as supplied.