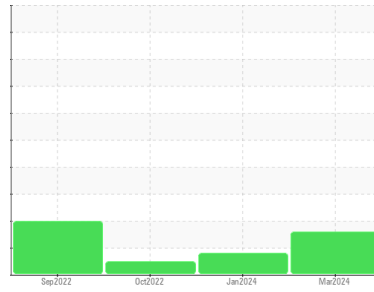




OIL ANALYSIS REPORT

Sample Rating Trend



ISO



Area

JEAN LECLERC EXCAVATION [02548846]

Machine Id

JOHN DEERE 135G 739 (S/N 1FF135GXPMF502416)

Component

Hydraulic System

Fluid

PANOLIN HLP SYNTH 46 (110 LTR)

DIAGNOSIS

Recommendation

Nous recommandons le remplacement des filtres de ce composant. Échantillonner de nouveau l'équipement au prochain intervalle de vidange afin d'en surveiller la condition.

Wear

Les taux d'usure de tous les composants sont normaux.

Contamination

Il y a une légère quantité de limon (particules de 4 à 14 microns) dans l'huile. Il y a une faible concentration (<5.0%) d'huile minérale présente dans le fluide. La teneur en eau est négligeable.

Fluid Condition

Le AN est acceptable pour ce fluide. L'état de l'huile permet d'en prolonger l'utilisation.

SAMPLE INFORMATION

	method	limit/base	current	history1	history2
Sample Number	Client Info		WC	WC	WC
Sample Date	Client Info		27 Mar 2024	08 Jan 2024	07 Oct 2022
Machine Age	hrs	Client Info	3323	1658	1658
Oil Age	hrs	Client Info	0	0	0
Oil Changed	Client Info		N/A	N/A	N/A
Sample Status			ATTENTION	ATTENTION	NORMAL

WEAR METALS

	method	limit/base	current	history1	history2	
Iron	ppm	ASTM D5185(m)	>32	12	11	2
Chromium	ppm	ASTM D5185(m)	>9	0	0	0
Nickel	ppm	ASTM D5185(m)	>5	0	<1	0
Titanium	ppm	ASTM D5185(m)		<1	0	<1
Silver	ppm	ASTM D5185(m)		0	0	0
Aluminum	ppm	ASTM D5185(m)	>9	<1	<1	0
Lead	ppm	ASTM D5185(m)	>28	0	<1	0
Copper	ppm	ASTM D5185(m)	>50	<1	1	<1
Tin	ppm	ASTM D5185(m)	>5	0	0	0
Antimony	ppm	ASTM D5185(m)		0	0	<1
Vanadium	ppm	ASTM D5185(m)		0	0	0
Beryllium	ppm	ASTM D5185(m)		0	0	0
Cadmium	ppm	ASTM D5185(m)		0	0	0

ADDITIVES

	method	limit/base	current	history1	history2	
Boron	ppm	ASTM D5185(m)	0	1	<1	<1
Barium	ppm	ASTM D5185(m)	0	<1	0	0
Molybdenum	ppm	ASTM D5185(m)	0	0	0	0
Manganese	ppm	ASTM D5185(m)	0	0	0	0
Magnesium	ppm	ASTM D5185(m)	0	<1	0	0
Calcium	ppm	ASTM D5185(m)	0	1	2	<1
Phosphorus	ppm	ASTM D5185(m)	1700	1406	1430	1683
Zinc	ppm	ASTM D5185(m)	0	54	49	10
Sulfur	ppm	ASTM D5185(m)	1350	1255	1386	1413
Lithium	ppm	ASTM D5185(m)		<1	<1	<1

CONTAMINANTS

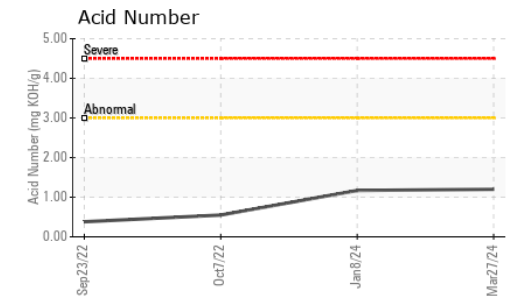
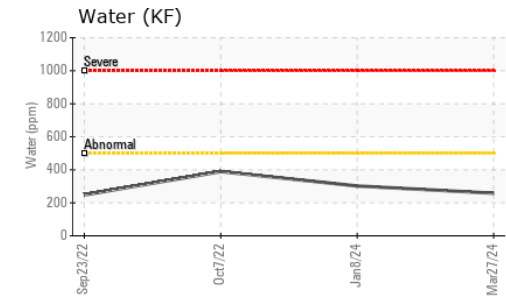
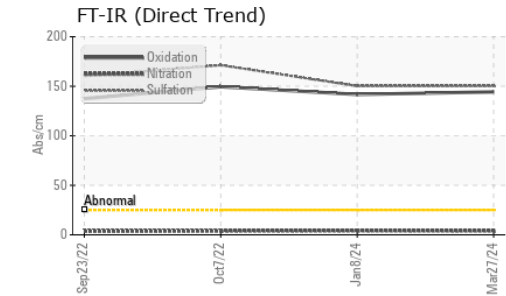
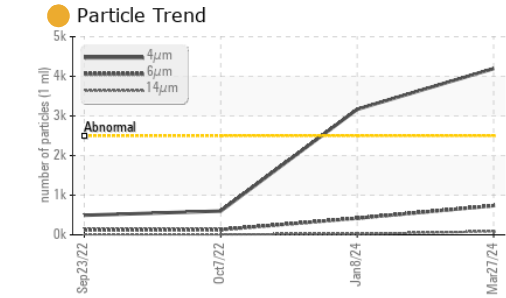
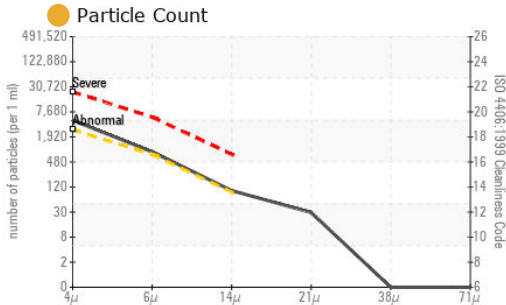
	method	limit/base	current	history1	history2	
Silicon	ppm	ASTM D5185(m)	>11	<1	2	0
Sodium	ppm	ASTM D5185(m)	>21	2	2	<1
Potassium	ppm	ASTM D5185(m)	>20	<1	5	<1
Water	%	ASTM D6304*	>0.05	0.025	0.030	0.038
ppm Water	ppm	ASTM D6304*	>500	258	302	389.0

INFRA-RED

	method	limit/base	current	history1	history2	
Soot %	%	ASTM D7844*		0	0	0
Nitration	Abs/cm	ASTM D7624*		3.9	4.1	3.9
Sulfation	Abs/.1mm	ASTM D7415*		150.2	150.2	171.2
Mineral Oil Content	%	ASTM D7418*	<5.0%	<5.0	<5.0	<5.0



OIL ANALYSIS REPORT



Laboratory : WearCheck - C8-1175 Appleby Line, Burlington, ON L7L 5H9
Sample No. : WC
Lab Number : 02625861
Unique Number : 5758993
Test Package : MOB 2 (Additional Tests: TAN Man)
Received : 01 Apr 2024
Tested : 03 Apr 2024
Diagnosed : 04 Apr 2024 - Bill Quesnel

To discuss this sample report, contact Customer Service at 1-800-268-2131.
 Test denoted (*) outside scope of accreditation, (m) method modified, (e) tested at external lab.
 Validity of results and interpretation are based on the sample and information as supplied.

Envirolin Canada
 520 rue Adanac
 Quebec, QC
 CA G1C 7B7
 Contact: Patrick Levesque
 patrick.levesque@envirolin.com
 T: (418)623-1216
 F: (418)660-8889

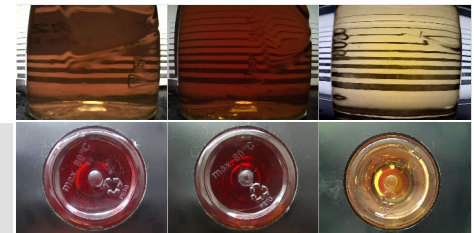
FLUID CLEANLINESS	method	limit/base	current	history1	history2
Particles >4µm	ASTM D7647	>2500	● 4195	● 3168	600
Particles >6µm	ASTM D7647	>640	● 736	419	129
Particles >14µm	ASTM D7647	>80	● 87	19	12
Particles >21µm	ASTM D7647	>20	● 26	4	3
Particles >38µm	ASTM D7647	>4	● 0	0	0
Particles >71µm	ASTM D7647	>3	● 0	0	0
Oil Cleanliness	ISO 4406 (c)	>18/16/13	● 19/17/14	● 19/16/11	16/14/11

FLUID DEGRADATION	method	limit/base	current	history1	history2
Oxidation	Abs./1mm	ASTM D7414*	144.3	141.7	149.5
Acid Number (AN)	mg KOH/g	ASTM D974*	1.20	1.17	0.55

VISUAL	method	limit/base	current	history1	history2
White Metal	scalar	Visual*	NONE	NONE	NONE
Yellow Metal	scalar	Visual*	NONE	NONE	NONE
Precipitate	scalar	Visual*	NONE	NONE	NONE
Silt	scalar	Visual*	NONE	NONE	NONE
Debris	scalar	Visual*	NONE	NONE	NONE
Sand/Dirt	scalar	Visual*	NONE	NONE	NONE
Appearance	scalar	Visual*	NORML	NORML	NORML
Odor	scalar	Visual*	NORML	NORML	NORML
Emulsified Water	scalar	Visual*	>0.05	NEG	NEG
Free Water	scalar	Visual*	NEG	NEG	NEG

FLUID PROPERTIES	method	limit/base	current	history1	history2
Visc @ 40°C	cSt	ASTM D7279(m)	47.0	44.9	40.5
Visc @ 100°C	cSt	ASTM D7279(m)	8.1	8.2	8.1
Viscosity Index (VI)	Scale	ASTM D2270*	146	158	178

SAMPLE IMAGES	method	limit/base	current	history1	history2
Color					
Bottom					





MINERAL OIL CONTENT REPORT

PASS

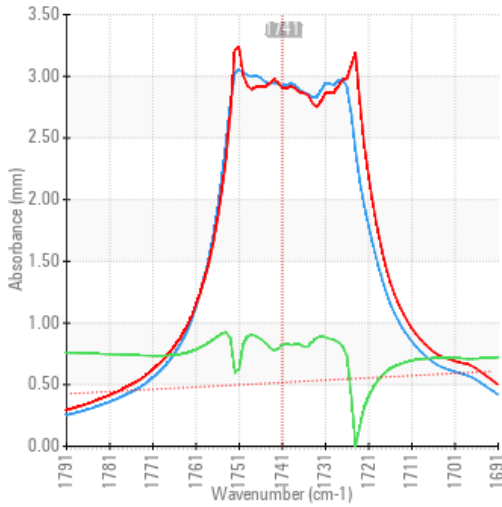


Area
JEAN LECLERC EXCAVATION [02548846]
 Machine Id
JOHN DEERE 135G 739 (S/N 1FF135GXPMF502416)
 Component
Hydraulic System
 Fluid
PANOLIN HLP SYNTH 46 (110 LTR)

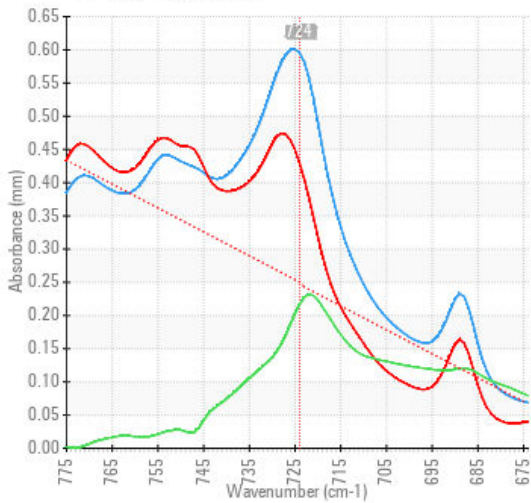
SPECTRAL ANALYSIS

		method	limit/base	current	history1	history2
Zinc	ppm	ASTM D5185(m)	0	54	49	10
Mineral Oil Content	%	ASTM D7418*	<5.0%	<5.0	<5.0	<5.0

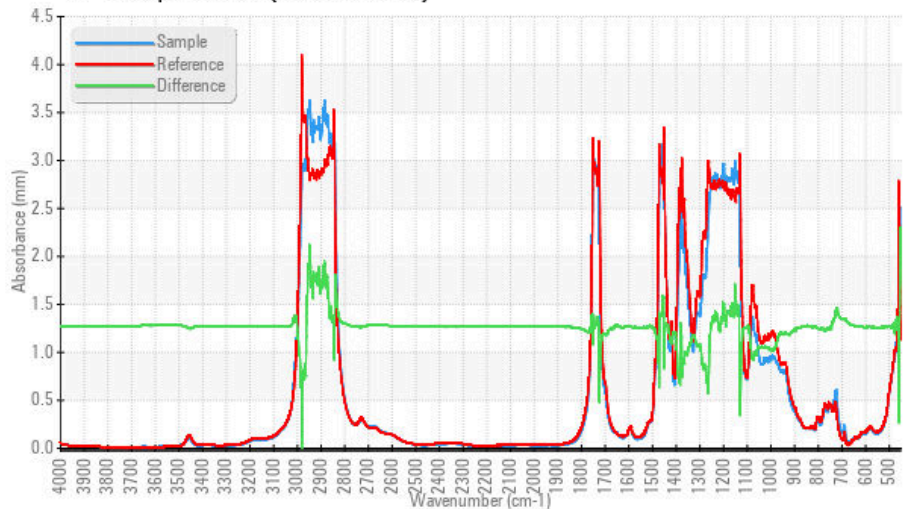
FT-IR - Esters I



FT-IR - Esters II



FT-IR Spectrum (Absorbance)



ISO 17025:2017
 Accredited
 Laboratory

Laboratory : WearCheck - C8-1175 Appleby Line, Burlington, ON L7L 5H9
Sample No. : WC
Lab Number : 02625861
Unique Number : 5758993
Test Package : MOB 2 (Additional Tests: TAN Man)
Received : 01 Apr 2024
Tested : 03 Apr 2024
Diagnosed : 04 Apr 2024 - Bill Quesnel

To discuss this sample report, contact Customer Service at 1-800-268-2131.

Test denoted (*) outside scope of accreditation, (m) method modified, (e) tested at external lab.

Validity of results and interpretation are based on the sample and information as supplied.

EnviroLin Canada

520 rue Adanac
 Quebec, QC
 CA G1C 7B7

Contact: Patrick Levesque
 patrick.levesque@envirolin.com

T: (418)623-1216
 F: (418)660-8889

This page left intentionally blank