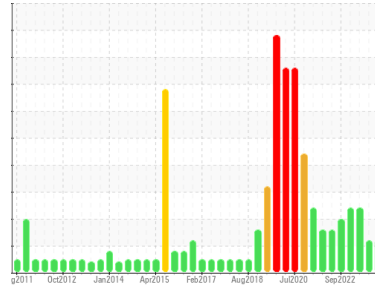




OIL ANALYSIS REPORT

Sample Rating Trend



ISO



Area
5 Utilities/031 Water Pumping/P Pump/757 Plant Water#7
 Machine Id
N/A 31GP757
 Component
Gearbox
 Fluid
PETRO CANADA ENDURATEX EP 150 (60 LTR)

DIAGNOSIS

Recommendation

We recommend you service the filters on this component. Resample at the next service interval to monitor.

Wear

All component wear rates are normal.

Contamination

There is a light amount of silt (particulates < 14 microns in size) present in the oil.

Fluid Condition

The AN level is acceptable for this fluid. The condition of the oil is suitable for further service.

SAMPLE INFORMATION

	method	limit/base	current	history1	history2
Sample Number	Client Info		WC0925280	WC0894091	WC0831872
Sample Date	Client Info		01 Apr 2024	05 Jan 2024	02 Nov 2023
Machine Age	hrs	Client Info	0	0	0
Oil Age	hrs	Client Info	0	0	0
Oil Changed	Client Info		N/A	N/A	N/A
Sample Status			ATTENTION	ABNORMAL	ABNORMAL

CONTAMINATION

	method	limit/base	current	history1	history2
Water	WC Method	>0.2	NEG	NEG	NEG

WEAR METALS

	method	limit/base	current	history1	history2
PQ	ASTM D8184*		31	27	25
Iron	ppm	ASTM D5185(m) >200	208	209	▲ 226
Chromium	ppm	ASTM D5185(m) >15	<1	<1	<1
Nickel	ppm	ASTM D5185(m) >15	0	<1	<1
Titanium	ppm	ASTM D5185(m)	0	0	0
Silver	ppm	ASTM D5185(m)	0	0	<1
Aluminum	ppm	ASTM D5185(m) >25	0	<1	<1
Lead	ppm	ASTM D5185(m) >100	0	<1	1
Copper	ppm	ASTM D5185(m) >200	8	8	10
Tin	ppm	ASTM D5185(m) >25	0	0	0
Antimony	ppm	ASTM D5185(m) >5	0	0	0
Vanadium	ppm	ASTM D5185(m)	0	0	0
Beryllium	ppm	ASTM D5185(m)	0	0	0
Cadmium	ppm	ASTM D5185(m)	0	0	0

ADDITIVES

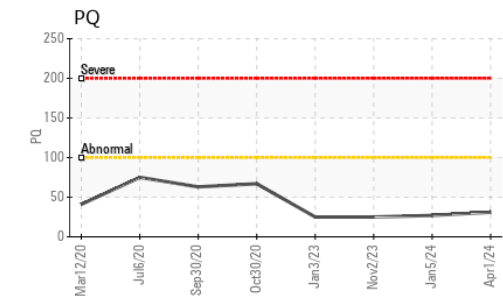
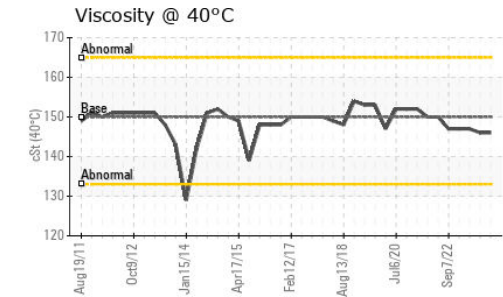
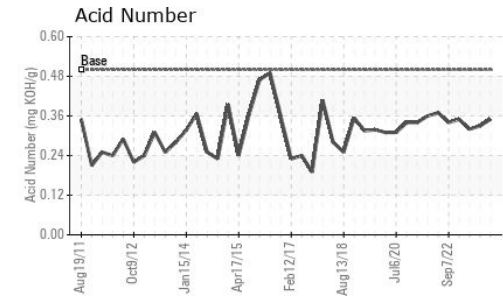
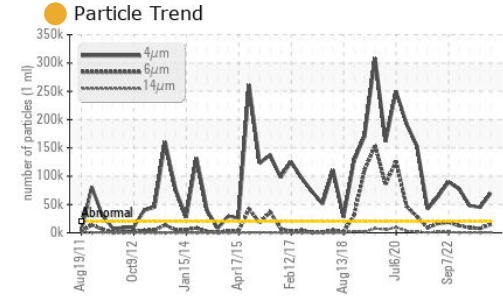
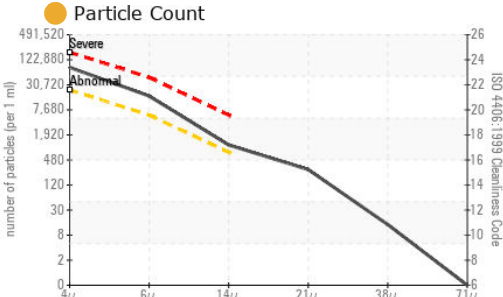
	method	limit/base	current	history1	history2
Boron	ppm	ASTM D5185(m) 55	43	44	48
Barium	ppm	ASTM D5185(m) 0	0	0	0
Molybdenum	ppm	ASTM D5185(m) 0	0	0	0
Manganese	ppm	ASTM D5185(m) 0	1	2	2
Magnesium	ppm	ASTM D5185(m) 2	<1	<1	0
Calcium	ppm	ASTM D5185(m) 6	2	3	3
Phosphorus	ppm	ASTM D5185(m) 250	216	225	242
Zinc	ppm	ASTM D5185(m) 3	6	6	7
Sulfur	ppm	ASTM D5185(m) 7500	4615	4870	5192
Lithium	ppm	ASTM D5185(m)	<1	<1	<1

CONTAMINANTS

	method	limit/base	current	history1	history2
Silicon	ppm	ASTM D5185(m) >50	3	6	5
Sodium	ppm	ASTM D5185(m)	2	2	3
Potassium	ppm	ASTM D5185(m) >20	0	<1	0



OIL ANALYSIS REPORT



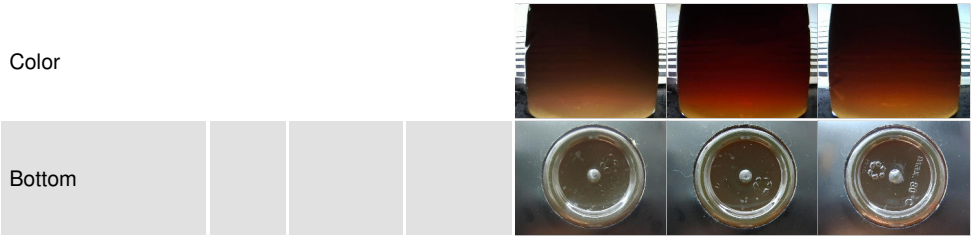
FLUID CLEANLINESS	method	limit/base	current	history1	history2
Particles >4µm	ASTM D7647	>20000	69603	▲ 44958	▲ 48114
Particles >6µm	ASTM D7647	>5000	14346	● 7785	● 8744
Particles >14µm	ASTM D7647	>640	● 967	632	● 685
Particles >21µm	ASTM D7647	>160	● 249	171	195
Particles >38µm	ASTM D7647	>40	12	14	24
Particles >71µm	ASTM D7647	>10	0	4	6
Oil Cleanliness	ISO 4406 (c)	>21/19/16	● 23/21/17	▲ 23/20/16	▲ 23/20/17

FLUID DEGRADATION	method	limit/base	current	history1	history2
Acid Number (AN)	mg KOH/g ASTM D974*	0.5	0.35	0.33	0.32

VISUAL	method	limit/base	current	history1	history2
White Metal	scalar Visual*	NONE	VLITE	NONE	NONE
Yellow Metal	scalar Visual*	NONE	NONE	NONE	NONE
Precipitate	scalar Visual*	NONE	NONE	NONE	NONE
Silt	scalar Visual*	NONE	VLITE	NONE	NONE
Debris	scalar Visual*	NONE	NONE	NONE	NONE
Sand/Dirt	scalar Visual*	NONE	NONE	NONE	NONE
Appearance	scalar Visual*	NORML	NORML	NORML	NORML
Odor	scalar Visual*	NORML	NORML	NORML	NORML
Emulsified Water	scalar Visual*	>0.2	NEG	NEG	NEG
Free Water	scalar Visual*		NEG	NEG	NEG

FLUID PROPERTIES	method	limit/base	current	history1	history2
Visc @ 40°C	cSt ASTM D7279(m)	150.0	146	146	147

SAMPLE IMAGES	method	limit/base	current	history1	history2
---------------	--------	------------	---------	----------	----------



Laboratory : WearCheck - C8-1175 Appleby Line, Burlington, ON L7L 5H9
Sample No. : WC0925280 **Received** : 02 Apr 2024
Lab Number : **02626229** **Tested** : 03 Apr 2024
Unique Number : 5759361 **Diagnosed** : 03 Apr 2024 - Kevin Marson
Test Package : IND 2 (Additional Tests: PQ, TAN Man)

Petro Canada Lubricants Inc.
 385 Southdown Road
 Mississauga, ON
 CA L5J 2Y3
 Contact: Kyle Blezard
 kyle.blezard@HFSinclair.com
 T: (905)403-6768
 F: (905)822-6025

To discuss this sample report, contact Customer Service at 1-800-268-2131.
 Test denoted (*) outside scope of accreditation, (m) method modified, (e) tested at external lab.
 Validity of results and interpretation are based on the sample and information as supplied.