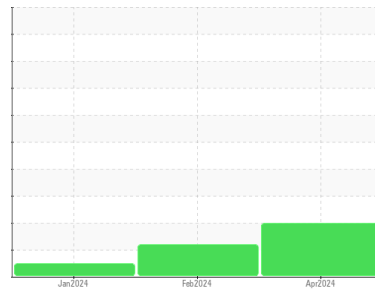




# FUEL REPORT

## Sample Rating Trend



ISO



Machine Id  
**50 REID DR**

Component  
**Diesel Fuel**

Fluid  
**No.2 DIESEL FUEL (ULTRALOW SULPHUR) (--- GAL)**

### DIAGNOSIS

#### Recommendation

Laboratory test indicate that this fuel is suitable for use and meets all test requirements. We advise that you filter this fluid before use. We recommend you service the filters on this component. Resample at the next service interval to monitor.

#### Contaminants

There is a light amount of silt (particulates < 14 microns in size) present in the fuel. The water content is negligible.

#### Fuel Condition

All laboratory tests indicate that this sample meets specifications for No.2 ultra-low-sulfur diesel fuel (US EPA/CGSB-3.517-3 type B).

SAMPLE INFORMATION		method	limit/base	current	history1	history2
Sample Number	Client Info			<b>PP0000943</b>	PP0000941	PP0000905
Sample Date	Client Info			<b>02 Apr 2024</b>	26 Feb 2024	23 Jan 2024
Machine Age	hrs	Client Info		<b>0</b>	0	0
Sample Status				<b>ATTENTION</b>	ABNORMAL	NORMAL

PHYSICAL PROPERTIES		method	limit/base	current	history1	history2
Specific Gravity		ASTM D1298*	0.839	<b>0.853</b>	0.856	0.853
Fuel Color	text	Visual Screen*	Yllow	<b>Red</b>	Red	Red
Visc @ 40°C	cSt	ASTM D7279(m)	3.0	<b>2.7</b>	2.4	3.1
Pensky-Martens Flash Point	°C	ASTM D7215*	52	<b>57.7</b>	63.6	60

SULFUR CONTENT		method	limit/base	current	history1	history2
Sulfur	ppm	ASTM D5185(m)	10	<b>10</b>	14	11

DISTILLATION		method	limit/base	current	history1	history2
Initial Boiling Point	°C	ASTM D2887*	165	<b>170</b>	175	174
5% Distillation Point	°C	ASTM D2887*		<b>199</b>	201	206
10% Distill Point	°C	ASTM D2887*	201	<b>209</b>	212	217
15% Distillation Point	°C	ASTM D2887*		<b>217</b>	220	225
20% Distill Point	°C	ASTM D2887*	216	<b>224</b>	229	233
30% Distill Point	°C	ASTM D2887*	230	<b>238</b>	243	247
40% Distill Point	°C	ASTM D2887*	243	<b>250</b>	255	260
50% Distill Point	°C	ASTM D2887*	255	<b>263</b>	267	272
60% Distill Point	°C	ASTM D2887*	267	<b>276</b>	278	285
70% Distill Point	°C	ASTM D2887*	280	<b>289</b>	289	297
80% Distill Point	°C	ASTM D2887*	295	<b>303</b>	299	309
85% Distillation Point	°C	ASTM D2887*		<b>313</b>	306	318
90% Distill Point	°C	ASTM D2887*	310	<b>322</b>	313	327
95% Distillation Point	°C	ASTM D2887*		<b>339</b>	325	343
Final Boiling Point	°C	ASTM D2887*	341	<b>362</b>	341	357

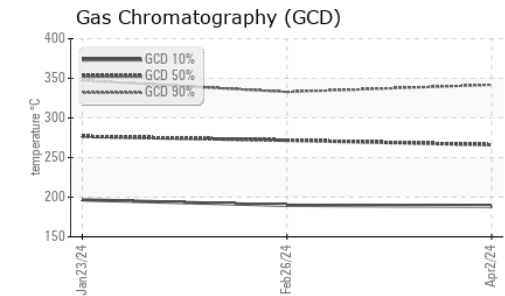
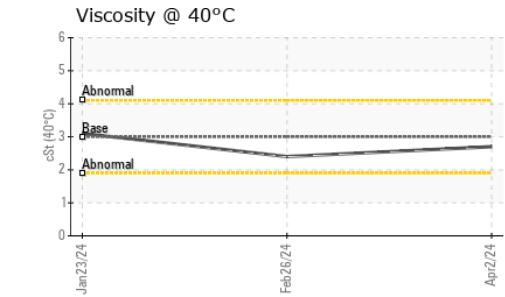
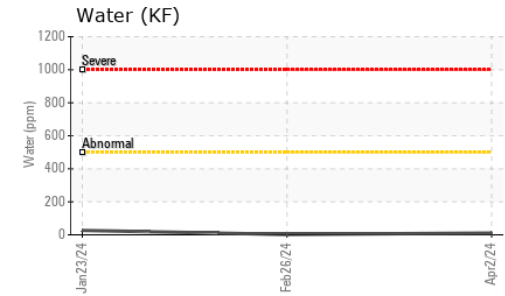
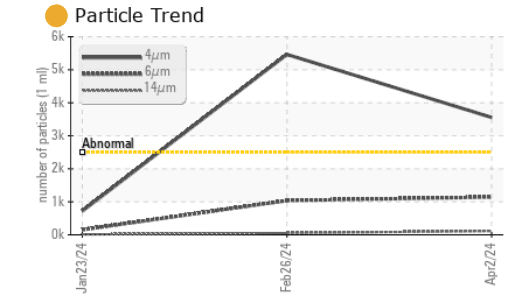
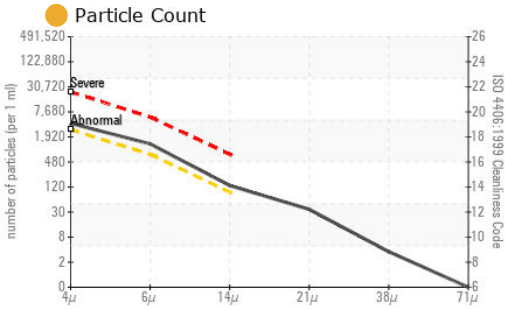
IGNITION QUALITY		method	limit/base	current	history1	history2
API Gravity		ASTM D1298*	37.7	<b>---</b>	33	34
Cetane Index		ASTM D4737*	<40.0	<b>---</b>	43	46

CONTAMINANTS		method	limit/base	current	history1	history2
Silicon	ppm	ASTM D5185(m)	<1.0	<b>0</b>	0	0
Sodium	ppm	ASTM D5185(m)	<0.1	<b>&lt;1</b>	<1	<1
Potassium	ppm	ASTM D5185(m)	<0.1	<b>0</b>	0	0
Water	%	ASTM D6304*	<0.05	<b>0.001</b>	0.001	0.003
ppm Water	ppm	ASTM D6304*	<500	<b>11</b>	2	27

FLUID CLEANLINESS		method	limit/base	current	history1	history2
Particles >4µm		ASTM D7647	>2500	<b>3555</b>	5463	718
Particles >6µm		ASTM D7647	>640	<b>1143</b>	1037	154
Particles >14µm		ASTM D7647	>80	<b>115</b>	53	12
Particles >21µm		ASTM D7647	>20	<b>31</b>	12	4
Particles >38µm		ASTM D7647	>4	<b>3</b>	1	1
Particles >71µm		ASTM D7647	>3	<b>0</b>	0	0
Oil Cleanliness		ISO 4406 (c)	>18/16/13	<b>19/17/14</b>	20/17/13	17/14/11



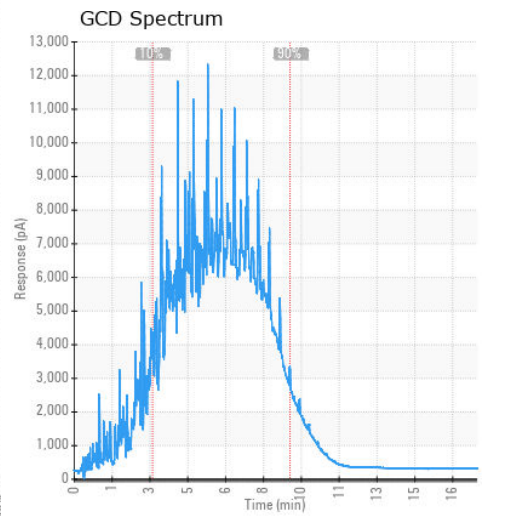
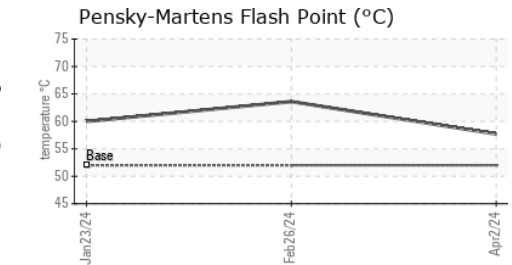
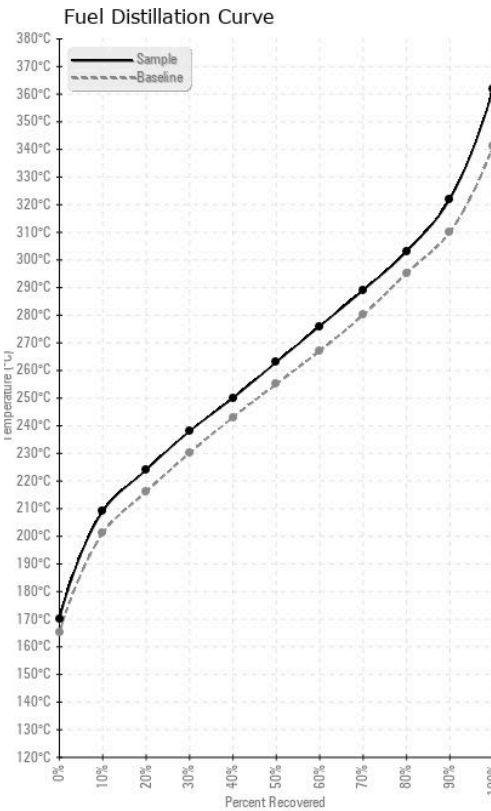
# FUEL REPORT



HEAVY METALS	method	limit/base	current	history1	history2
Aluminum	ppm	ASTM D5185(m)	<0.1	0	0
Nickel	ppm	ASTM D5185(m)	<0.1	0	0
Lead	ppm	ASTM D5185(m)	<0.1	0	0
Vanadium	ppm	ASTM D5185(m)	<0.1	0	0
Iron	ppm	ASTM D5185(m)	<0.1	0	0
Calcium	ppm	ASTM D5185(m)	<0.1	0	0
Magnesium	ppm	ASTM D5185(m)	<0.1	0	0
Phosphorus	ppm	ASTM D5185(m)	<0.1	0	0
Zinc	ppm	ASTM D5185(m)	<0.1	0	0

SAMPLE IMAGES	method	limit/base	current	history1	history2
Color					
Bottom					

## GRAPHS



**Laboratory** : WearCheck - C8-1175 Appleby Line, Burlington, ON L7L 5H9  
**Sample No.** : PP0000943  
**Lab Number** : 02626499  
**Unique Number** : 5759631  
**Test Package** : FUEL ( Additional Tests: CC Flash, PrtCount )

**BMO Financial Group**  
 4100 Gordon Baker Road., SCC A2W011  
 Toronto, ON  
 CA M1W 3E8  
 Contact: Blaine Setterfield  
 Blaine.Setterfield@bmo.com  
 T: (437)788-3087  
 F:

To discuss this sample report, contact Customer Service at 1-800-268-2131.  
 Test denoted (\*) outside scope of accreditation, (m) method modified, (e) tested at external lab.  
 Validity of results and interpretation are based on the sample and information as supplied.