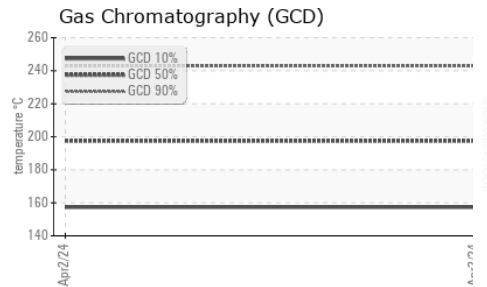
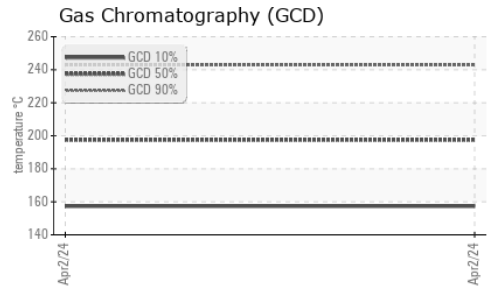
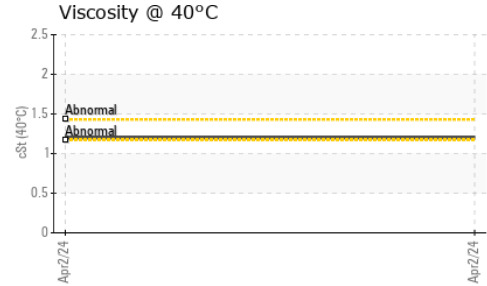
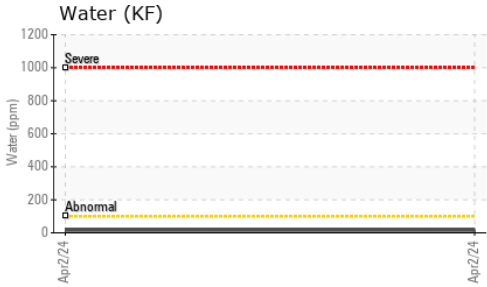


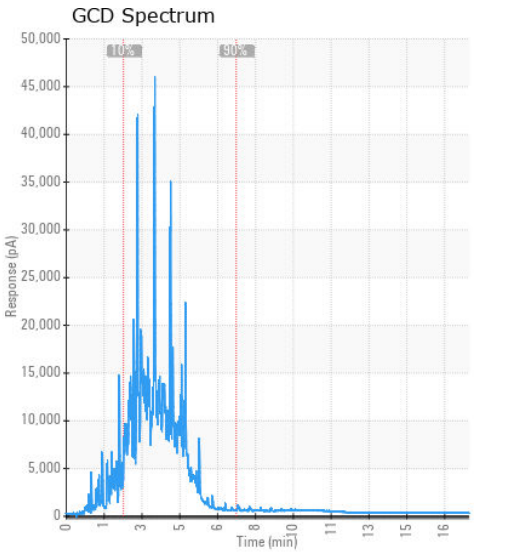
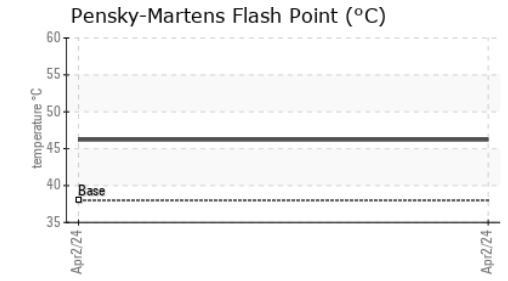
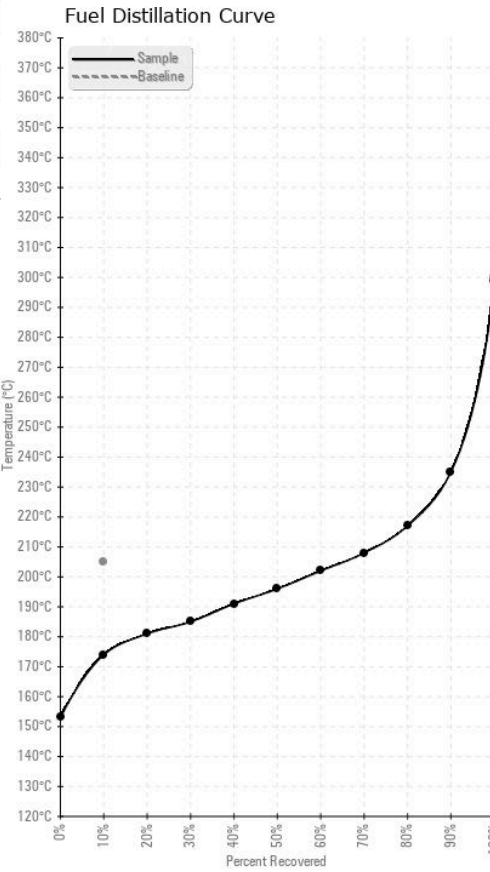
FUEL REPORT



HEAVY METALS	method	limit/base	current	history1	history2	
Aluminum	ppm	ASTM D5185(m)	<0.1	0	---	---
Nickel	ppm	ASTM D5185(m)	<0.1	0	---	---
Lead	ppm	ASTM D5185(m)	<0.1	0	---	---
Vanadium	ppm	ASTM D5185(m)	<0.1	0	---	---
Iron	ppm	ASTM D5185(m)	<0.1	0	---	---
Calcium	ppm	ASTM D5185(m)	<0.1	0	---	---
Magnesium	ppm	ASTM D5185(m)	<0.1	0	---	---
Phosphorus	ppm	ASTM D5185(m)	<0.1	<1	---	---
Zinc	ppm	ASTM D5185(m)	<0.1	0	---	---

SAMPLE IMAGES	method	limit/base	current	history1	history2
Color				no image	no image
Bottom				no image	no image

GRAPHS



Laboratory : WearCheck - C8-1175 Appleby Line, Burlington, ON L7L 5H9
Sample No. : WC0899306 **Received** : 04 Apr 2024
Lab Number : 02626805 **Tested** : 10 Apr 2024
Unique Number : 5759937 **Diagnosed** : 10 Apr 2024 - Kevin Marson
Test Package : FUEL (Additional Tests: CC Flash)

SUNWING AIRLINES
 44 FASKEN DRIVE, UNIT 12/13
 ETOBICOKE, ON
 CA M9W 5M8
 Contact: Geoff Carroll
 gcarroll@flsunwing.com
 T: (416)802-9643
 F: (416)640-1595

To discuss this sample report, contact Customer Service at 1-800-268-2131.
 Test denoted (*) outside scope of accreditation, (m) method modified, (e) tested at external lab.
 Validity of results and interpretation are based on the sample and information as supplied.