



OIL ANALYSIS REPORT

Sample Rating Trend



ISO



Area

PONT ILES AUX TOURTES [02626817]

Machine Id

DITCH WITCH HX30 DWPHX30XTP0001998

Component

Hydraulic System

Fluid

PANOLIN HLP SYNTH 46 (30 LTR)

DIAGNOSIS

Recommendation

Nous recommandons le remplacement des filtres de ce composant. Échantillonner de nouveau l'équipement au prochain intervalle de vidange afin d'en surveiller la condition.

Wear

Les taux d'usure de tous les composants sont normaux.

Contamination

Il y a une légère quantité de limon (particules de 4 à 14 microns) dans l'huile. Il y a une faible concentration (<5.0%) d'huile minérale présente dans le fluide. La teneur en eau est négligeable.

Fluid Condition

Le AN est acceptable pour ce fluide. L'état de l'huile permet d'en prolonger l'utilisation.

SAMPLE INFORMATION	method	limit/base	current	history1	history2
Sample Number	Client Info		WC	---	---
Sample Date	Client Info		02 Apr 2024	---	---
Machine Age	hrs	Client Info	4	---	---
Oil Age	hrs	Client Info	0	---	---
Oil Changed	Client Info		N/A	---	---
Sample Status			ATTENTION	---	---

WEAR METALS	method	limit/base	current	history1	history2
Iron	ppm	ASTM D5185(m)	>20	0	---
Chromium	ppm	ASTM D5185(m)	>10	0	---
Nickel	ppm	ASTM D5185(m)	>10	0	---
Titanium	ppm	ASTM D5185(m)		<1	---
Silver	ppm	ASTM D5185(m)		0	---
Aluminum	ppm	ASTM D5185(m)	>10	0	---
Lead	ppm	ASTM D5185(m)	>10	0	---
Copper	ppm	ASTM D5185(m)	>75	0	---
Tin	ppm	ASTM D5185(m)	>10	0	---
Antimony	ppm	ASTM D5185(m)		0	---
Vanadium	ppm	ASTM D5185(m)		0	---
Beryllium	ppm	ASTM D5185(m)		0	---
Cadmium	ppm	ASTM D5185(m)		0	---

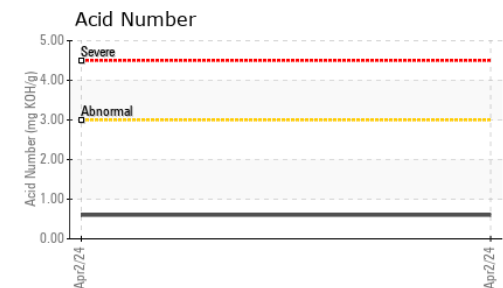
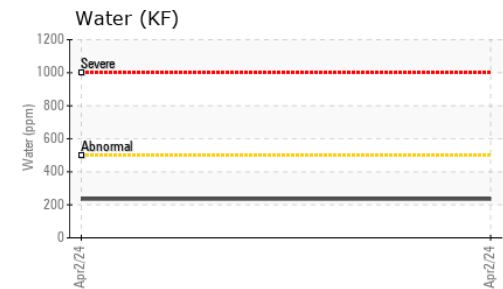
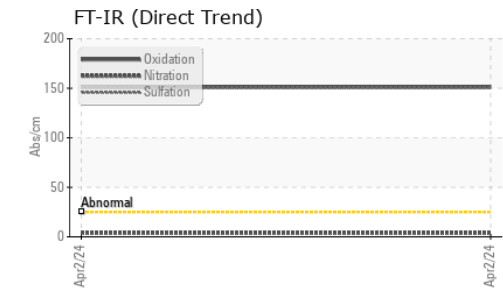
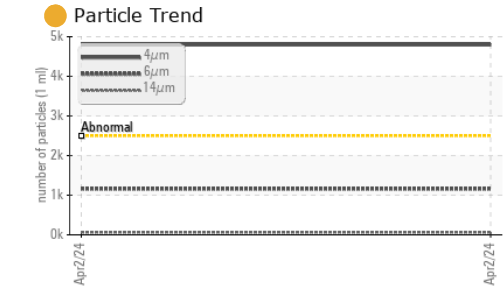
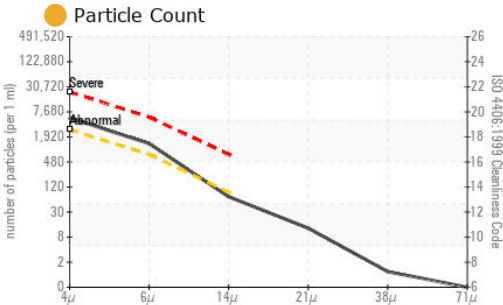
ADDITIVES	method	limit/base	current	history1	history2
Boron	ppm	ASTM D5185(m)	0	4	---
Barium	ppm	ASTM D5185(m)	0	0	---
Molybdenum	ppm	ASTM D5185(m)	0	0	---
Manganese	ppm	ASTM D5185(m)	0	0	---
Magnesium	ppm	ASTM D5185(m)	0	<1	---
Calcium	ppm	ASTM D5185(m)	0	133	---
Phosphorus	ppm	ASTM D5185(m)	1700	1594	---
Zinc	ppm	ASTM D5185(m)	0	53	---
Sulfur	ppm	ASTM D5185(m)	1350	1334	---
Lithium	ppm	ASTM D5185(m)		<1	---

CONTAMINANTS	method	limit/base	current	history1	history2
Silicon	ppm	ASTM D5185(m)	>20	0	---
Sodium	ppm	ASTM D5185(m)		<1	---
Potassium	ppm	ASTM D5185(m)	>20	<1	---
Water	%	ASTM D6304*	>0.05	0.023	---
ppm Water	ppm	ASTM D6304*	>500	235	---

INFRA-RED	method	limit/base	current	history1	history2
Soot %	%	ASTM D7844*		0	---
Nitration	Abs/cm	ASTM D7624*		3.9	---
Sulfation	Abs/.1mm	ASTM D7415*		150.6	---
Mineral Oil Content	%	ASTM D7418*	<5.0%	<5.0	---



OIL ANALYSIS REPORT

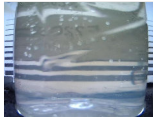



FLUID CLEANLINESS	method	limit/base	current	history1	history2
Particles >4µm	ASTM D7647	>2500	● 4796	---	---
Particles >6µm	ASTM D7647	>640	● 1163	---	---
Particles >14µm	ASTM D7647	>80	62	---	---
Particles >21µm	ASTM D7647	>20	11	---	---
Particles >38µm	ASTM D7647	>4	1	---	---
Particles >71µm	ASTM D7647	>3	0	---	---
Oil Cleanliness	ISO 4406 (c)	>18/16/13	● 19/17/13	---	---

FLUID DEGRADATION	method	limit/base	current	history1	history2
Oxidation	Abs/.1mm	ASTM D7414*	151.1	---	---
Acid Number (AN)	mg KOH/g	ASTM D974*	0.60	---	---

VISUAL	method	limit/base	current	history1	history2
White Metal	scalar	Visual*	NONE	---	---
Yellow Metal	scalar	Visual*	NONE	---	---
Precipitate	scalar	Visual*	NONE	---	---
Silt	scalar	Visual*	NONE	---	---
Debris	scalar	Visual*	NONE	---	---
Sand/Dirt	scalar	Visual*	NONE	---	---
Appearance	scalar	Visual*	NORML	---	---
Odor	scalar	Visual*	NORML	---	---
Emulsified Water	scalar	Visual*	NEG	---	---
Free Water	scalar	Visual*	NEG	---	---

FLUID PROPERTIES	method	limit/base	current	history1	history2	
Visc @ 40°C	cSt	ASTM D7279(m)	47.0	47.2	---	---
Visc @ 100°C	cSt	ASTM D7279(m)	8.1	8.5	---	---
Viscosity Index (VI)	Scale	ASTM D2270*	146	158	---	---

SAMPLE IMAGES	method	limit/base	current	history1	history2
Color				no image	no image
Bottom				no image	no image



Laboratory : WearCheck - C8-1175 Appleby Line, Burlington, ON L7L 5H9
Sample No. : WC
Lab Number : 02626816
Unique Number : 5759948
Test Package : MOB 2 (Additional Tests: TAN Man)
Received : 04 Apr 2024
Tested : 05 Apr 2024
Diagnosed : 05 Apr 2024 - Bill Quesnel

To discuss this sample report, contact Customer Service at 1-800-268-2131.
 Test denoted (*) outside scope of accreditation, (m) method modified, (e) tested at external lab.
 Validity of results and interpretation are based on the sample and information as supplied.

Envirolin Canada
 520 rue Adanac
 Quebec, QC
 CA G1C 7B7
 Contact: Patrick Levesque
 patrick.levesque@envirolin.com
 T: (418)623-1216
 F: (418)660-8889



MINERAL OIL CONTENT REPORT

PASS

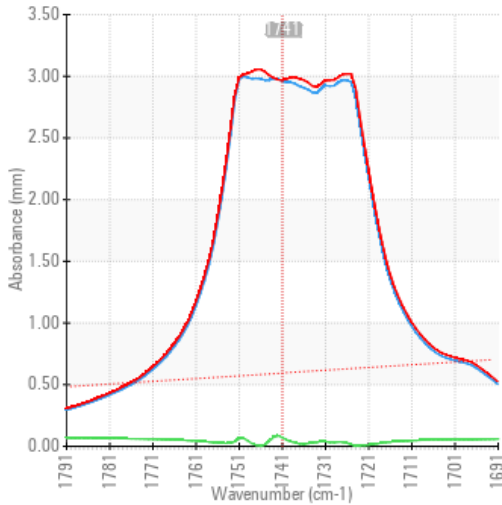


Area
PONT ILES AUX TOURTES [02626817]
 Machine Id
DITCH WITCH HX30 DWPHX30XTP0001998
 Component
Hydraulic System
 Fluid
PANOLIN HLP SYNTH 46 (30 LTR)

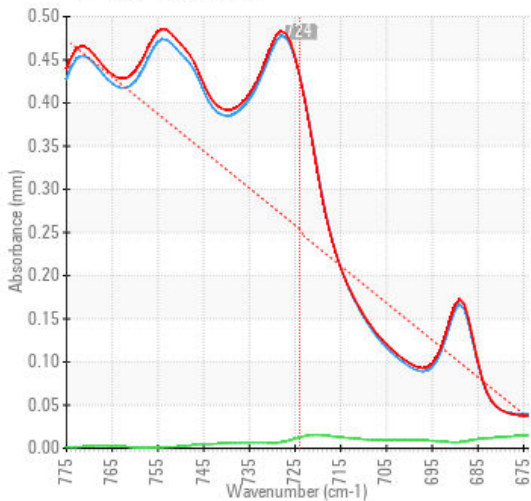
SPECTRAL ANALYSIS

		method	limit/base	current	history1	history2
Zinc	ppm	ASTM D5185(m)	0	53	---	---
Mineral Oil Content	%	ASTM D7418*	<5.0%	<5.0	---	---

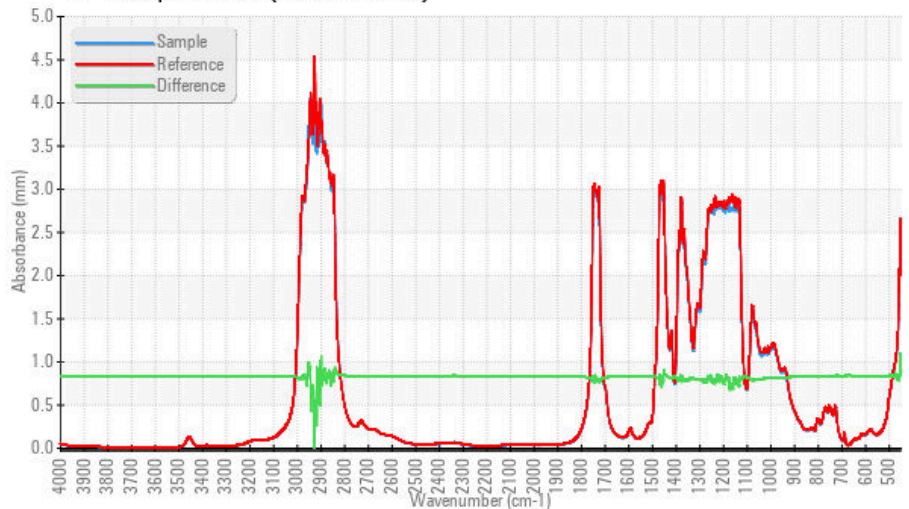
FT-IR - Esters I



FT-IR - Esters II



FT-IR Spectrum (Absorbance)



ISO 17025:2017
 Accredited
 Laboratory

Laboratory : WearCheck - C8-1175 Appleby Line, Burlington, ON L7L 5H9
Sample No. : WC
Lab Number : 02626816
Unique Number : 5759948
Test Package : MOB 2 (Additional Tests: TAN Man)
Received : 04 Apr 2024
Tested : 05 Apr 2024
Diagnosed : 05 Apr 2024 - Bill Quesnel

To discuss this sample report, contact Customer Service at 1-800-268-2131.

Test denoted (*) outside scope of accreditation, (m) method modified, (e) tested at external lab.

Validity of results and interpretation are based on the sample and information as supplied.

EnviroLin Canada

520 rue Adanac
 Quebec, QC
 CA G1C 7B7

Contact: Patrick Levesque
 patrick.levesque@envirolin.com

T: (418)623-1216
 F: (418)660-8889

This page left intentionally blank