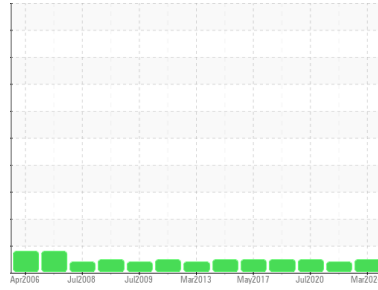




OIL ANALYSIS REPORT

Sample Rating Trend



NORMAL



Machine Id

PTL2 LIFTER (S/N E2000263)

Component

Gearbox

Fluid

MOBIL MOBILGEAR 630 (--- GAL)

DIAGNOSIS

Recommendation

Resample at the next service interval to monitor.
NOTE: Please provide information regarding reservoir capacity, filter type and micron rating with next sample.

Wear

All component wear rates are normal. The ferrography results are normal indicating no abnormal wear in the system.

Contaminants

There is no indication of any contamination in the oil.

Oil Condition

The AN level is acceptable for this fluid. The condition of the oil is suitable for further service.

SAMPLE INFORMATION

	method	limit/base	current	history1	history2
Sample Number	Client Info		WC943442	CB0029711	CB0029669
Sample Date	Client Info		23 Mar 2024	24 Mar 2021	16 Jul 2020
Machine Age	mths	Client Info	0	0	0
Oil Age	mths	Client Info	0	0	0
Oil Changed	Client Info		N/A	N/A	N/A
Sample Status			NORMAL	ABNORMAL	NORMAL

CONTAMINATION

	method	limit/base	current	history1	history2
Water	WC Method	>0.2	NEG	NEG	NEG

WEAR METALS

	method	limit/base	current	history1	history2
PQ	ASTM D8184*		0	7	20
Iron	ppm	ASTM D5185(m) >200	11	27	19
Chromium	ppm	ASTM D5185(m) >15	0	2	1
Nickel	ppm	ASTM D5185(m) >15	0	<1	<1
Titanium	ppm	ASTM D5185(m)	0	0	0
Silver	ppm	ASTM D5185(m)	0	<1	<1
Aluminum	ppm	ASTM D5185(m) >25	0	<1	<1
Lead	ppm	ASTM D5185(m) >100	0	<1	0
Copper	ppm	ASTM D5185(m) >200	0	<1	<1
Tin	ppm	ASTM D5185(m) >25	0	<1	<1
Antimony	ppm	ASTM D5185(m) >5	0	0	<1
Vanadium	ppm	ASTM D5185(m)	0	0	0
Beryllium	ppm	ASTM D5185(m)	0	0	0
Cadmium	ppm	ASTM D5185(m)	0	0	0

ADDITIVES

	method	limit/base	current	history1	history2
Boron	ppm	ASTM D5185(m)	2	2	3
Barium	ppm	ASTM D5185(m)	0	10	10
Molybdenum	ppm	ASTM D5185(m)	0	3	3
Manganese	ppm	ASTM D5185(m)	0	3	2
Magnesium	ppm	ASTM D5185(m)	<1	<1	<1
Calcium	ppm	ASTM D5185(m)	<1	45	43
Phosphorus	ppm	ASTM D5185(m)	213	185	199
Zinc	ppm	ASTM D5185(m)	4	8	8
Sulfur	ppm	ASTM D5185(m)	10519	9972	9871
Lithium	ppm	ASTM D5185(m)	<1	▲ 18	15

CONTAMINANTS

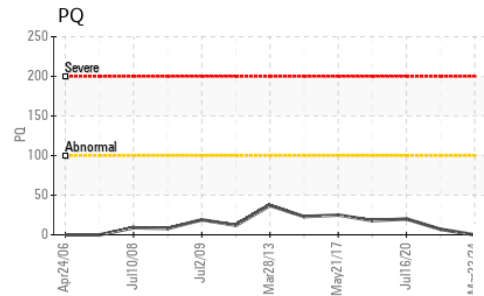
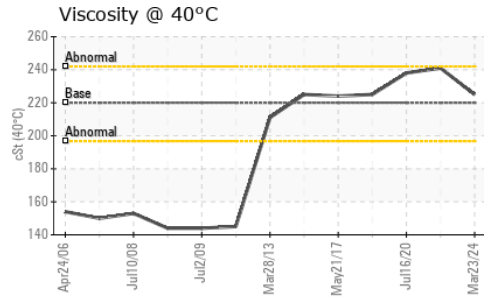
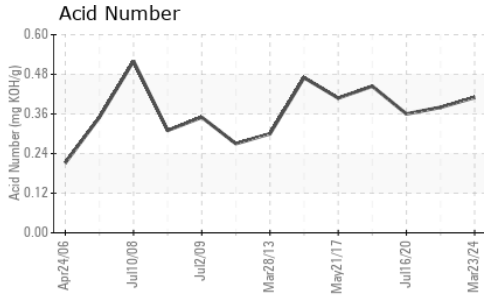
	method	limit/base	current	history1	history2
Silicon	ppm	ASTM D5185(m) >50	0	<1	<1
Sodium	ppm	ASTM D5185(m)	<1	24	21
Potassium	ppm	ASTM D5185(m) >20	<1	<1	<1

FLUID DEGRADATION

	method	limit/base	current	history1	history2
Acid Number (AN)	mg KOH/g	ASTM D974*	0.41	0.38	0.36



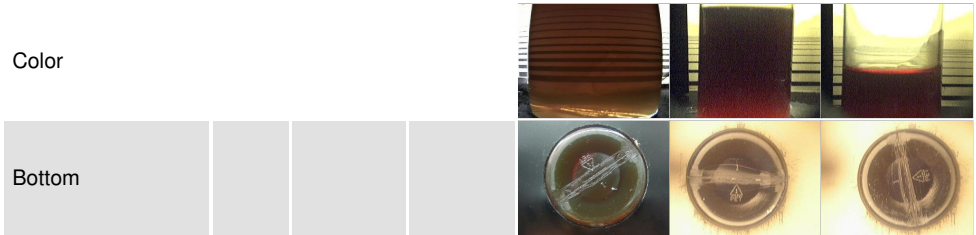
OIL ANALYSIS REPORT



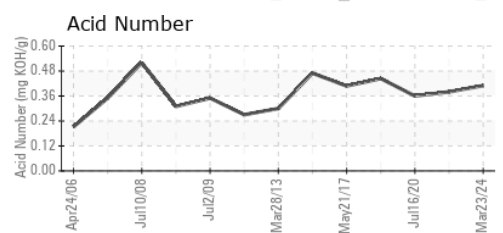
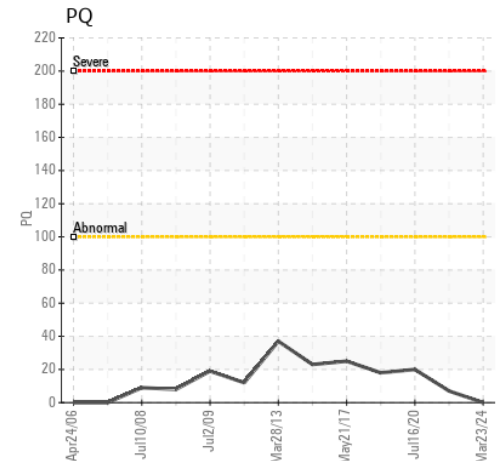
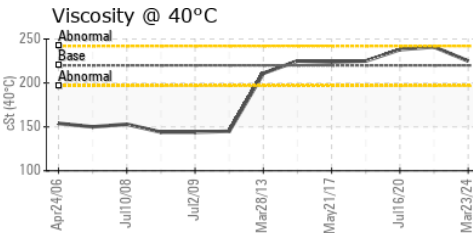
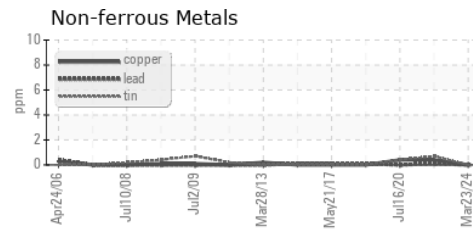
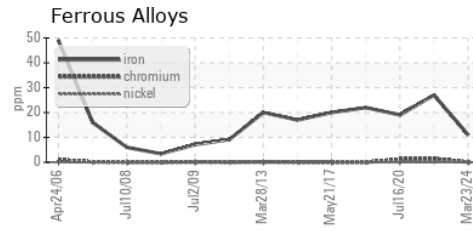
PARAMETER	method	limit/base	current	history1	history2
White Metal	scalar	Visual*	NONE	VLITE	VLITE
Yellow Metal	scalar	Visual*	NONE	NONE	NONE
Precipitate	scalar	Visual*	NONE	NONE	NONE
Silt	scalar	Visual*	NONE	NONE	NONE
Debris	scalar	Visual*	NONE	NONE	VLITE
Sand/Dirt	scalar	Visual*	NONE	VLITE	NONE
Appearance	scalar	Visual*	NORML	NORML	NORML
Odor	scalar	Visual*	NORML	NORML	NORML
Emulsified Water	scalar	Visual*	>0.2	NEG	NEG
Free Water	scalar	Visual*		NEG	NEG

FLUID PROPERTIES	method	limit/base	current	history1	history2
Visc @ 40°C	cSt	ASTM D7279(m)	220	225	241

SAMPLE IMAGES	method	limit/base	current	history1	history2
---------------	--------	------------	---------	----------	----------



GRAPHS



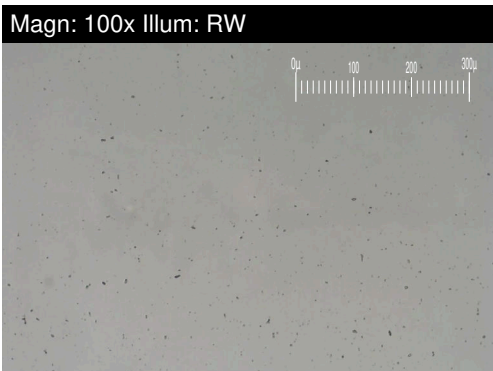
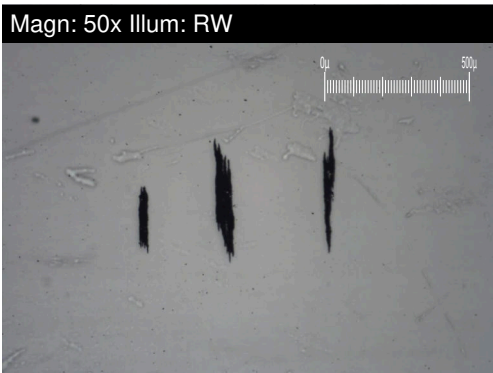
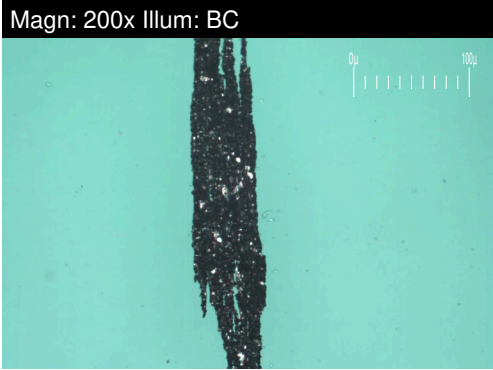
Laboratory : WearCheck - C8-1175 Appleby Line, Burlington, ON L7L 5H9
Sample No. : WC943442 **Received** : 05 Apr 2024
Lab Number : 02627119 **Tested** : 09 Apr 2024
Unique Number : 5760251 **Diagnosed** : 11 Apr 2024 - Kevin Marson
Test Package : IND 3 (Additional Tests: TAN Man)

TOYOTA MOTOR MANUFACT.
 1055 FOUNTAIN STREET N.
 CAMBRIDGE, ON
 CA N3H 5K2
 Contact: mike clappison
 mike.clappison@toyota.com
 T: (519)212-5023
 F: (519)653-9638

To discuss this sample report, contact Customer Service at 1-800-268-2131.
 Test denoted (*) outside scope of accreditation, (m) method modified, (e) tested at external lab.
 Validity of results and interpretation are based on the sample and information as supplied.

FERROGRAPHY REPORT

Machine Id
PTL2 LIFTER (S/N E2000263)
 Component
Gearbox
 Fluid
MOBIL MOBILGEAR 630 (--- GAL)

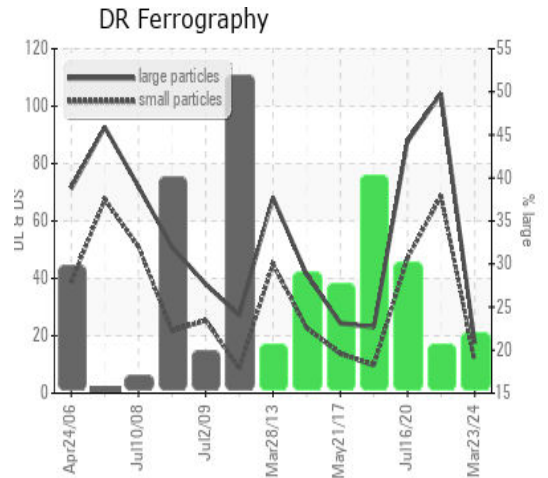


DR-FERROGRAPHY		method	limit/base	current	history1	history2
Large Particles		DR-Ferr*		17.5	104.4	87.7
Small Particles		DR-Ferr*		11.2	68.8	47.0
Total Particles		DR-Ferr*	>---	28.7	173.2	134.7
Large Particles Percentage	%	DR-Ferr*		22	20.6	30.2
Severity Index		DR-Ferr*		110	3717	3569

FERROGRAPHY		method	limit/base	current	history1	history2
Ferrous Rubbing	Scale 0-10	ASTM D7684*		■ 2	■ 4	■ 4
Ferrous Sliding	Scale 0-10	ASTM D7684*				
Ferrous Cutting	Scale 0-10	ASTM D7684*				
Ferrous Rolling	Scale 0-10	ASTM D7684*		■ 1	■ 2	■ 1
Ferrous Break-in	Scale 0-10	ASTM D7684*				
Ferrous Spheres	Scale 0-10	ASTM D7684*				
Ferrous Black Oxides	Scale 0-10	ASTM D7684*				
Ferrous Red Oxides	Scale 0-10	ASTM D7684*				
Ferrous Corrosive	Scale 0-10	ASTM D7684*			■ 2	■ 2
Ferrous Other	Scale 0-10	ASTM D7684*				
Nonferrous Rubbing	Scale 0-10	ASTM D7684*				
Nonferrous Sliding	Scale 0-10	ASTM D7684*				
Nonferrous Cutting	Scale 0-10	ASTM D7684*				
Nonferrous Rolling	Scale 0-10	ASTM D7684*				
Nonferrous Other	Scale 0-10	ASTM D7684*				
Carbonaceous Material	Scale 0-10	ASTM D7684*				■ 2
Lubricant Degradation	Scale 0-10	ASTM D7684*				
Sand/Dirt	Scale 0-10	ASTM D7684*		■ 1	■ 1	■ 1
Fibres	Scale 0-10	ASTM D7684*				
Spheres	Scale 0-10	ASTM D7684*				
Other	Scale 0-10	ASTM D7684*		■ 1	■ 2	■ 1

WEAR

All component wear rates are normal.
 The ferrography results are normal indicating no abnormal wear in the system.



This page left intentionally blank