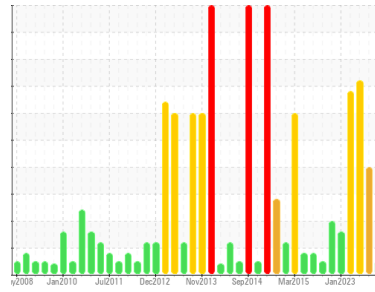




OIL ANALYSIS REPORT

Area
COULÉE
 Machine Id
68140510R - UNITÉ HYDRAULIQUE (Four 1 et 2)
 Component
Hydraulic System
 Fluid
QUAKER CHEMICAL QUINTOLUBRIC 888-46 (1000 LTR)

Sample Rating Trend



NORMAL



DIAGNOSIS

Recommendation

Échantillonner de nouveau l'équipement au prochain intervalle de vidange afin d'en surveiller la condition.

Wear

Les taux d'usure de tous les composants sont normaux.

Contamination

Il n'y a aucun indice de contamination dans l'huile.

Fluid Condition

L'état de l'huile est acceptable pour la durée de service.

SAMPLE INFORMATION		method	limit/base	current	history1	history2
Sample Number	Client Info			WC0910676	WC0852605	WC0852619
Sample Date	Client Info			02 Apr 2024	19 Mar 2024	13 Nov 2023
Machine Age	mths	Client Info		0	0	0
Oil Age	mths	Client Info		0	0	0
Oil Changed	Client Info			N/A	N/A	N/A
Sample Status				NORMAL	SEVERE	SEVERE

CONTAMINATION		method	limit/base	current	history1	history2
Water	WC Method		>0.05	NEG	NEG	NEG

WEAR METALS		method	limit/base	current	history1	history2
Iron	ppm	ASTM D5185(m)	>20	1	1	<1
Chromium	ppm	ASTM D5185(m)	>20	<1	<1	0
Nickel	ppm	ASTM D5185(m)	>20	0	0	<1
Titanium	ppm	ASTM D5185(m)		<1	<1	0
Silver	ppm	ASTM D5185(m)		0	0	0
Aluminum	ppm	ASTM D5185(m)	>20	0	0	<1
Lead	ppm	ASTM D5185(m)	>20	0	0	<1
Copper	ppm	ASTM D5185(m)	>20	1	1	<1
Tin	ppm	ASTM D5185(m)	>20	289	288	277
Antimony	ppm	ASTM D5185(m)		0	0	0
Vanadium	ppm	ASTM D5185(m)		0	0	0
Beryllium	ppm	ASTM D5185(m)		0	0	0
Cadmium	ppm	ASTM D5185(m)		0	0	0

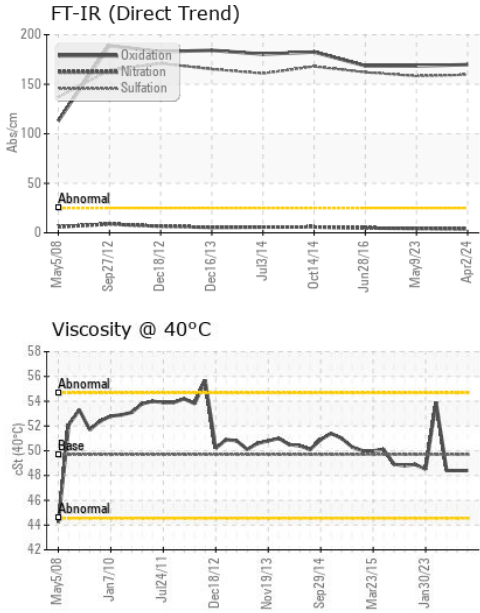
ADDITIVES		method	limit/base	current	history1	history2
Boron	ppm	ASTM D5185(m)		<1	<1	2
Barium	ppm	ASTM D5185(m)		0	0	0
Molybdenum	ppm	ASTM D5185(m)		0	0	<1
Manganese	ppm	ASTM D5185(m)		0	0	0
Magnesium	ppm	ASTM D5185(m)		<1	<1	2
Calcium	ppm	ASTM D5185(m)		<1	0	3
Phosphorus	ppm	ASTM D5185(m)		104	104	105
Zinc	ppm	ASTM D5185(m)		3	3	6
Sulfur	ppm	ASTM D5185(m)		490	508	508
Lithium	ppm	ASTM D5185(m)		<1	<1	<1

CONTAMINANTS		method	limit/base	current	history1	history2
Silicon	ppm	ASTM D5185(m)	>15	<1	<1	2
Sodium	ppm	ASTM D5185(m)		2	2	5
Potassium	ppm	ASTM D5185(m)	>20	<1	<1	10

INFRA-RED		method	limit/base	current	history1	history2
Soot %	%	ASTM D7844*		0	---	---
Nitration	Abs/cm	ASTM D7624*		4.0	---	---
Sulfation	Abs/.1mm	ASTM D7415*		159.6	---	---

FLUID DEGRADATION		method	limit/base	current	history1	history2
Oxidation	Abs/.1mm	ASTM D7414*		169.8	---	---

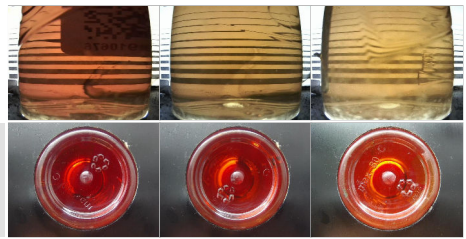
OIL ANALYSIS REPORT



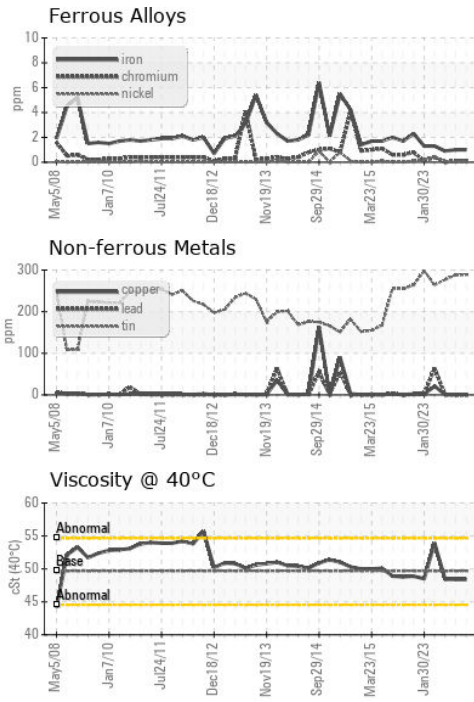
PARAMETER	method	limit/base	current	history1	history2
White Metal	scalar	Visual*	NONE	NONE	NONE
Yellow Metal	scalar	Visual*	NONE	NONE	NONE
Precipitate	scalar	Visual*	NONE	NONE	NONE
Silt	scalar	Visual*	NONE	NONE	NONE
Debris	scalar	Visual*	NONE	NONE	NONE
Sand/Dirt	scalar	Visual*	NONE	VLITE	NONE
Appearance	scalar	Visual*	NORML	NORML	NORML
Odor	scalar	Visual*	NORML	NORML	NORML
Emulsified Water	scalar	Visual*	>0.05	NEG	NEG
Free Water	scalar	Visual*		NEG	NEG

FLUID PROPERTIES	method	limit/base	current	history1	history2
Visc @ 40°C	cSt	ASTM D7279(m)	49.7	48.4	48.4

SAMPLE IMAGES	method	limit/base	current	history1	history2
Color					
Bottom					



GRAPHS



Laboratory : WearCheck - C8-1175 Appleby Line, Burlington, ON L7L 5H9
Sample No. : WC0910676
Lab Number : 02627871
Unique Number : 5761003
Test Package : IND 1 (Additional Tests: FT-IR)
Received : 10 Apr 2024
Tested : 10 Apr 2024
Diagnosed : 10 Apr 2024 - Wes Davis

Rio Tinto Alcan (SECAL) USINE LATERRIERE
 6301 BOUL. TALBOT
 LATERRIERE, QC
 CA G0V 1K0
 Contact: Sylvain Payer
 sylvain.payer@riotinto.com
 T: (418)818-9426
 F: (418)678-1876

To discuss this sample report, contact Customer Service at 1-800-268-2131.
 Test denoted (*) outside scope of accreditation, (m) method modified, (e) tested at external lab.
 Validity of results and interpretation are based on the sample and information as supplied.