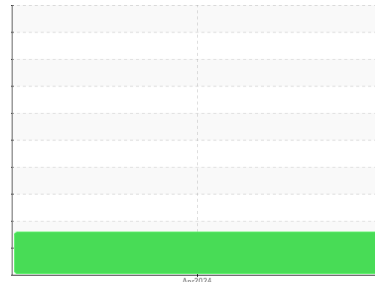




FUEL REPORT

Sample Rating Trend



ISO

Area

[114456]

Machine Id

SBS

Component

Diesel Fuel

Fluid

No.2 DIESEL FUEL (ULTRALOW SULPHUR) (--- GAL)

DIAGNOSIS

Recommendation

Laboratory test indicate that this fuel is suitable for use and meets all test requirements. We advise that you filter this fluid before use. We recommend you service the filters on this component. We recommend an early resample to monitor this condition.

Contaminants

There is a moderate amount of silt (particulates < 14 microns in size) present in the fuel. The water content is negligible.

Fuel Condition

All laboratory tests indicate that this sample meets specifications for No.2 ultra-low-sulfur diesel fuel (US EPA/CGSB-3.517-3 type B). The fuel is still serviceable provided that the contaminant(s) can be reduced to acceptable levels.

SAMPLE INFORMATION

method	limit/base	current	history1	history2
Sample Number	Client Info	WC0831182	---	---
Sample Date	Client Info	11 Apr 2024	---	---
Machine Age	hrs Client Info	0	---	---
Sample Status		ABNORMAL	---	---

PHYSICAL PROPERTIES

method	limit/base	current	history1	history2	
Specific Gravity	ASTM D1298*	0.839	0.844	---	---
Fuel Color	text Visual Screen*	Yellow	Yellow	---	---
Visc @ 40°C	cSt ASTM D7279(m)	3.0	2.7	---	---
Pensky-Martens Flash Point	°C ASTM D7215*	52	64.5	---	---

SULFUR CONTENT

method	limit/base	current	history1	history2	
Sulfur	ppm ASTM D5185(m)	10	5	---	---

DISTILLATION

method	limit/base	current	history1	history2	
Initial Boiling Point	°C ASTM D2887*	165	177	---	---
5% Distillation Point	°C ASTM D2887*		201	---	---
10% Distill Point	°C ASTM D2887*	201	211	---	---
15% Distillation Point	°C ASTM D2887*		219	---	---
20% Distill Point	°C ASTM D2887*	216	226	---	---
30% Distill Point	°C ASTM D2887*	230	241	---	---
40% Distill Point	°C ASTM D2887*	243	253	---	---
50% Distill Point	°C ASTM D2887*	255	266	---	---
60% Distill Point	°C ASTM D2887*	267	280	---	---
70% Distill Point	°C ASTM D2887*	280	295	---	---
80% Distill Point	°C ASTM D2887*	295	311	---	---
85% Distillation Point	°C ASTM D2887*		320	---	---
90% Distill Point	°C ASTM D2887*	310	330	---	---
95% Distillation Point	°C ASTM D2887*		343	---	---
Final Boiling Point	°C ASTM D2887*	341	359	---	---

IGNITION QUALITY

method	limit/base	current	history1	history2	
API Gravity	ASTM D1298*	37.7	36	---	---
Cetane Index	ASTM D4737*	<40.0	48	---	---

CONTAMINANTS

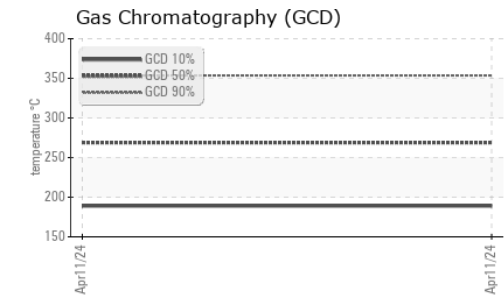
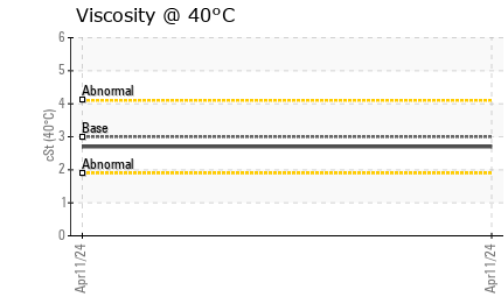
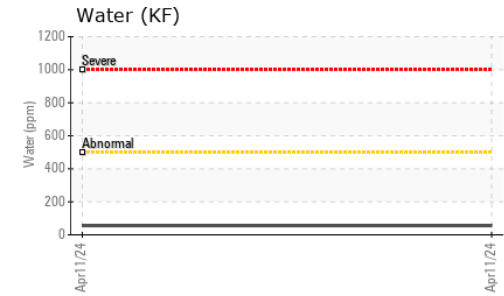
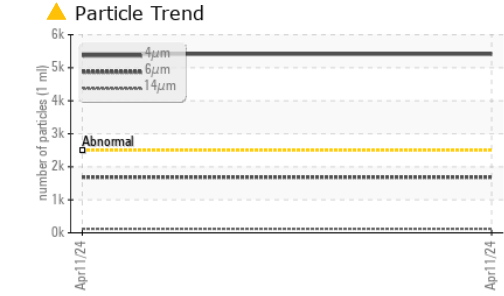
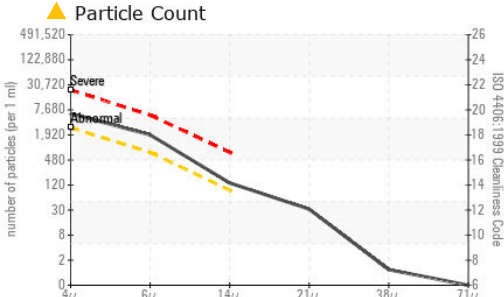
method	limit/base	current	history1	history2	
Silicon	ppm ASTM D5185(m)	<1.0	0	---	---
Sodium	ppm ASTM D5185(m)	<0.1	0	---	---
Potassium	ppm ASTM D5185(m)	<0.1	<1	---	---
Water	% ASTM D6304*	<0.05	0.005	---	---
ppm Water	ppm ASTM D6304*	<500	56	---	---

FLUID CLEANLINESS

method	limit/base	current	history1	history2	
Particles >4µm	ASTM D7647	>2500	▲ 5414	---	---
Particles >6µm	ASTM D7647	>640	▲ 1685	---	---
Particles >14µm	ASTM D7647	>80	● 119	---	---
Particles >21µm	ASTM D7647	>20	28	---	---
Particles >38µm	ASTM D7647	>4	1	---	---
Particles >71µm	ASTM D7647	>3	0	---	---
Oil Cleanliness	ISO 4406 (c)	>18/16/13	▲ 20/18/14	---	---



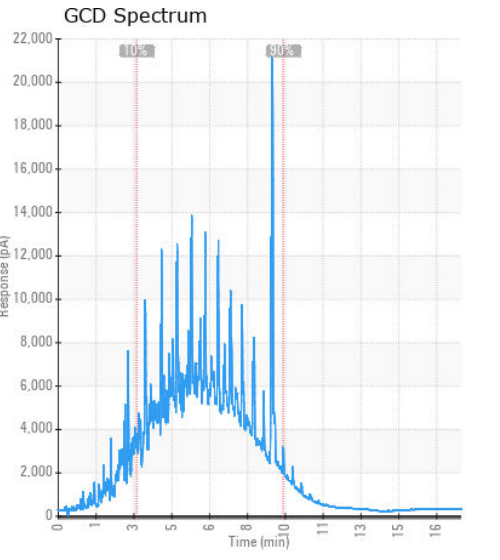
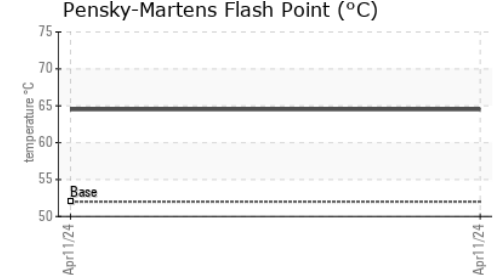
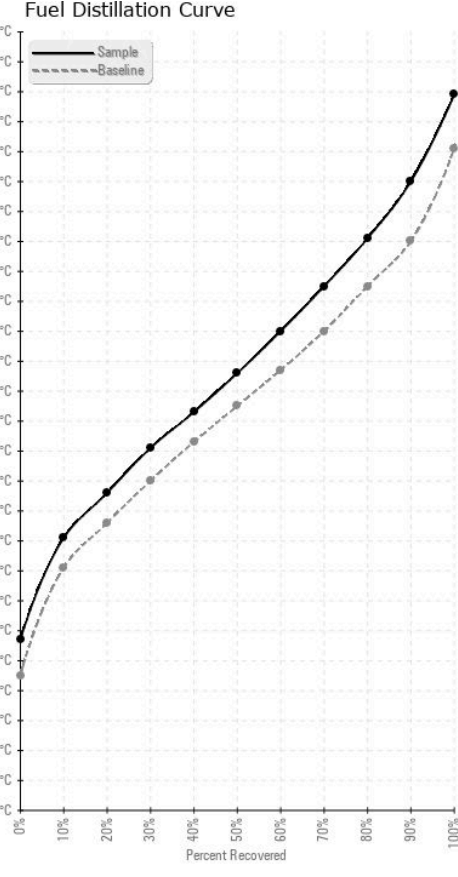
FUEL REPORT



HEAVY METALS	method	limit/base	current	history1	history2	
Aluminum	ppm	ASTM D5185(m)	<0.1	0	---	---
Nickel	ppm	ASTM D5185(m)	<0.1	0	---	---
Lead	ppm	ASTM D5185(m)	<0.1	0	---	---
Vanadium	ppm	ASTM D5185(m)	<0.1	0	---	---
Iron	ppm	ASTM D5185(m)	<0.1	0	---	---
Calcium	ppm	ASTM D5185(m)	<0.1	0	---	---
Magnesium	ppm	ASTM D5185(m)	<0.1	0	---	---
Phosphorus	ppm	ASTM D5185(m)	<0.1	0	---	---
Zinc	ppm	ASTM D5185(m)	<0.1	0	---	---

SAMPLE IMAGES	method	limit/base	current	history1	history2
Color				no image	no image
Bottom				no image	no image

GRAPHS



Laboratory : WearCheck - C8-1175 Appleby Line, Burlington, ON L7L 5H9 **PERFORMANCE EQUIPMENT - VISION TRUCK**
Sample No. : WC0831182 **Received** : 12 Apr 2024 **415 EVANS AVENUE**
Lab Number : 02628611 **Tested** : 17 Apr 2024 **ETOBICOKE, ON**
Unique Number : 5761743 **Diagnosed** : 17 Apr 2024 - Kevin Marson **CA M8W 0B3**
Test Package : FUEL (Additional Tests: CC Flash, PrtCount) **Contact: Service**
To discuss this sample report, contact Customer Service at 1-800-268-2131. **etobservice@visiontruckgroup.com**

Validity of results and interpretation are based on the sample and information as supplied.
 Test denoted (*) outside scope of accreditation, (m) method modified, (e) tested at external lab.