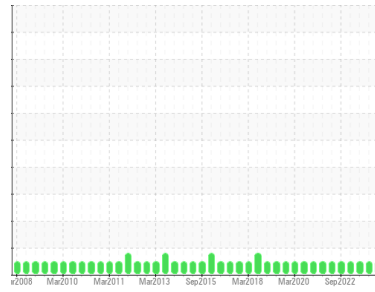




OIL ANALYSIS REPORT

Sample Rating Trend



NORMAL



Area
Kingsbridge SP-13584
 Machine
T18 (S/N 21764)
 Component
Hydraulic System
 Fluid
TEXACO RANDO WM 32 (180 LTR)

DIAGNOSIS

Recommendation

Resample at the next service interval to monitor.

Wear

All component wear rates are normal.

Contamination

The system cleanliness is acceptable for your target ISO 4406 cleanliness code. The water content is negligible. The system and fluid cleanliness is acceptable.

Fluid Condition

The AN level is acceptable for this fluid. The condition of the oil is suitable for further service.

SAMPLE INFORMATION

	method	limit/base	current	history1	history2
Sample Number	Client Info		WC	WC0783149	WC0305861
Sample Date	Client Info		20 Feb 2024	31 Aug 2023	27 Mar 2023
Machine Age	yrs	Client Info	0	0	0
Oil Age	yrs	Client Info	0	0	0
Oil Changed	Client Info		N/A	N/A	N/A
Sample Status			NORMAL	NORMAL	NORMAL

WEAR METALS

	method	limit/base	current	history1	history2
PQ	ASTM D8184*	>50	0	0	0
Iron	ppm	ASTM D5185(m)	>10	3	3
Chromium	ppm	ASTM D5185(m)	>15	3	4
Nickel	ppm	ASTM D5185(m)	>10	0	<1
Titanium	ppm	ASTM D5185(m)		0	0
Silver	ppm	ASTM D5185(m)		0	<1
Aluminum	ppm	ASTM D5185(m)	>10	<1	<1
Lead	ppm	ASTM D5185(m)	>20	0	<1
Copper	ppm	ASTM D5185(m)	>15	7	8
Tin	ppm	ASTM D5185(m)	>20	0	<1
Antimony	ppm	ASTM D5185(m)		0	<1
Vanadium	ppm	ASTM D5185(m)		0	0
Beryllium	ppm	ASTM D5185(m)		0	0
Cadmium	ppm	ASTM D5185(m)		0	0

ADDITIVES

	method	limit/base	current	history1	history2
Boron	ppm	ASTM D5185(m)		<1	<1
Barium	ppm	ASTM D5185(m)		0	<1
Molybdenum	ppm	ASTM D5185(m)		0	0
Manganese	ppm	ASTM D5185(m)		0	0
Magnesium	ppm	ASTM D5185(m)		<1	0
Calcium	ppm	ASTM D5185(m)		66	70
Phosphorus	ppm	ASTM D5185(m)		328	331
Zinc	ppm	ASTM D5185(m)		401	388
Sulfur	ppm	ASTM D5185(m)		1568	1693
Lithium	ppm	ASTM D5185(m)		<1	<1

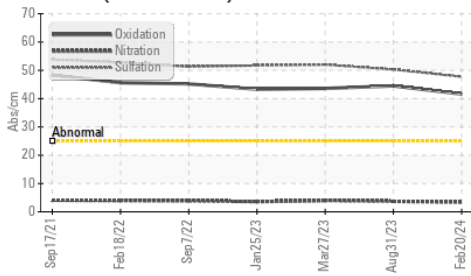
CONTAMINANTS

	method	limit/base	current	history1	history2
Silicon	ppm	ASTM D5185(m)	>10	0	<1
Sodium	ppm	ASTM D5185(m)	>10	<1	<1
Potassium	ppm	ASTM D5185(m)	>20	<1	<1
Water	%	ASTM D6304*	>0.03	0.004	0.005
ppm Water	ppm	ASTM D6304*	>300	40	58

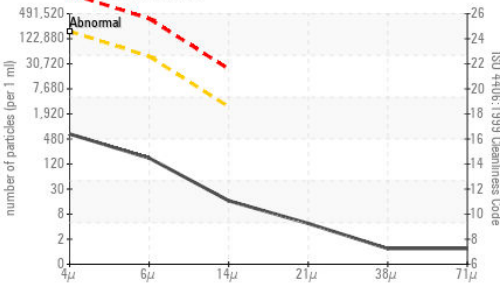
INFRA-RED

	method	limit/base	current	history1	history2
Soot %	%	ASTM D7844*		0	0
Nitration	Abs/cm	ASTM D7624*		3.4	3.7
Sulfation	Abs/.1mm	ASTM D7415*		47.7	50.3

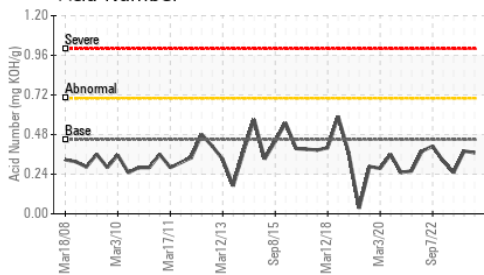
FT-IR (Direct Trend)



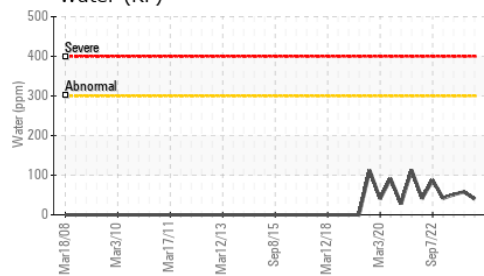
Particle Count



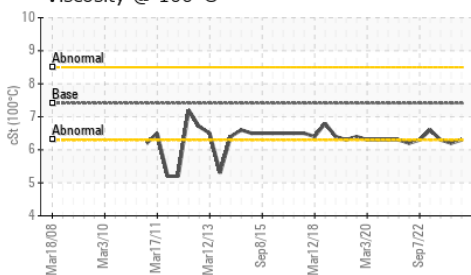
Acid Number



Water (KF)



Viscosity @ 100°C



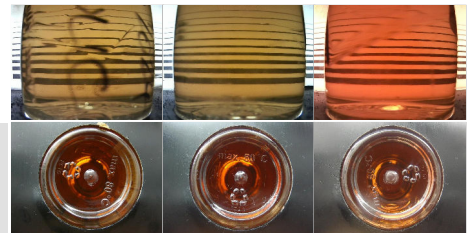
FLUID CLEANLINESS	method	limit/base	current	history1	history2
Particles >4µm	ASTM D7647	>160000	556	201	613
Particles >6µm	ASTM D7647	>40000	147	62	187
Particles >14µm	ASTM D7647	>2500	14	5	21
Particles >21µm	ASTM D7647	>640	4	2	6
Particles >38µm	ASTM D7647	>160	1	0	0
Particles >71µm	ASTM D7647	>40	1	0	0
Oil Cleanliness	ISO 4406 (c)	>24/22/18	16/14/11	15/13/10	16/15/12

FLUID DEGRADATION	method	limit/base	current	history1	history2
Oxidation	Abs/.1mm	ASTM D7414*	41.6	44.5	43.6
Acid Number (AN)	mg KOH/g	ASTM D974*	0.37	0.38	0.25

VISUAL	method	limit/base	current	history1	history2
White Metal	scalar	Visual*	NONE	NONE	NONE
Yellow Metal	scalar	Visual*	NONE	NONE	NONE
Precipitate	scalar	Visual*	NONE	NONE	NONE
Silt	scalar	Visual*	NONE	NONE	NONE
Debris	scalar	Visual*	NONE	NONE	NONE
Sand/Dirt	scalar	Visual*	NONE	NONE	NONE
Appearance	scalar	Visual*	NORML	NORML	NORML
Odor	scalar	Visual*	NORML	NORML	NORML
Emulsified Water	scalar	Visual*	>0.03	NEG	NEG
Free Water	scalar	Visual*	NEG	NEG	NEG

FLUID PROPERTIES	method	limit/base	current	history1	history2	
Visc @ 40°C	cSt	ASTM D7279(m)	32	29.0	28.4	28.3
Visc @ 100°C	cSt	ASTM D7279(m)	7.41	6.3	6.2	6.3
Viscosity Index (VI)	Scale	ASTM D2270*	211	176	176	183

SAMPLE IMAGES	method	limit/base	current	history1	history2
Color					
Bottom					



Laboratory : WearCheck - C8-1175 Appleby Line, Burlington, ON L7L 5H9
Sample No. : WC
Lab Number : **02628844**
Unique Number : 5761976
Test Package : IND 2 (Additional Tests: FT-IR, KF, KV100, PQ, TAN Man, VI)

Vestas American Wind Technology Inc.
 1417 NW Everett Street
 Portland, OR
 US 97209
 Contact: Nicole Philippi
 NiPhi@vestas.com
 T: (503)327-7683
 F: (503)327-0247

To discuss this sample report, contact Customer Service at 1-800-268-2131.
 Test denoted (*) outside scope of accreditation, (m) method modified, (e) tested at external lab.
 Validity of results and interpretation are based on the sample and information as supplied.