

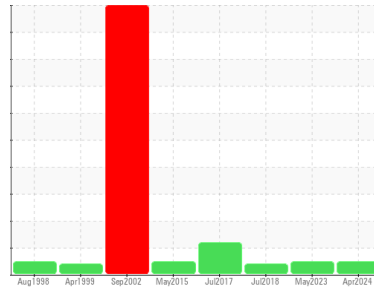


# OIL ANALYSIS REPORT

Area  
**1 [2534809]**  
 Machine Id  
**01-0040-010-004**  
 Component  
**1 Gearbox**  
 Fluid  
**MOBIL MOBILGEAR SHC 220 (4 GAL)**

## SCREW CONV N°4 (1M40)

Sample Rating Trend



**NORMAL**



### DIAGNOSIS

#### Recommendation

Resample at the next service interval to monitor.

#### Wear

All component wear rates are normal.

#### Contamination

There is no indication of any contamination in the oil.

#### Fluid Condition

The AN level is acceptable for this fluid. The condition of the oil is suitable for further service.

SAMPLE INFORMATION		method	limit/base	current	history1	history2
Sample Number	Client Info			<b>WC0857989</b>	WC0754114	WC0295851
Sample Date	Client Info			<b>11 Apr 2024</b>	01 May 2023	19 Jul 2018
Machine Age	yrs	Client Info		<b>0</b>	0	0
Oil Age	yrs	Client Info		<b>0</b>	2	0
Oil Changed	Client Info			<b>N/A</b>	N/A	N/A
Sample Status				<b>NORMAL</b>	NORMAL	ATTENTION

CONTAMINATION		method	limit/base	current	history1	history2
Water	WC Method		>0.2	<b>NEG</b>	NEG	NEG

WEAR METALS		method	limit/base	current	history1	history2
PQ		ASTM D8184*		<b>4</b>	25	48
Iron	ppm	ASTM D5185(m)	>200	<b>28</b>	226	187
Chromium	ppm	ASTM D5185(m)	>15	<b>0</b>	<1	<1
Nickel	ppm	ASTM D5185(m)	>15	<b>0</b>	<1	1
Titanium	ppm	ASTM D5185(m)		<b>0</b>	0	0
Silver	ppm	ASTM D5185(m)		<b>0</b>	0	0
Aluminum	ppm	ASTM D5185(m)	>25	<b>0</b>	<1	<1
Lead	ppm	ASTM D5185(m)	>100	<b>0</b>	0	<1
Copper	ppm	ASTM D5185(m)	>200	<b>0</b>	<1	<1
Tin	ppm	ASTM D5185(m)	>25	<b>0</b>	0	0
Antimony	ppm	ASTM D5185(m)	>5	<b>0</b>	<1	0
Vanadium	ppm	ASTM D5185(m)		<b>0</b>	0	0
Beryllium	ppm	ASTM D5185(m)		<b>0</b>	0	0
Cadmium	ppm	ASTM D5185(m)		<b>0</b>	0	0

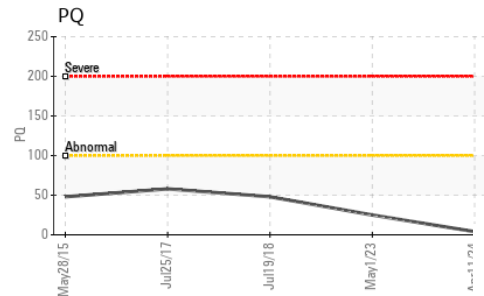
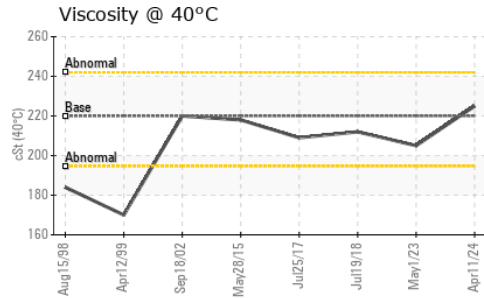
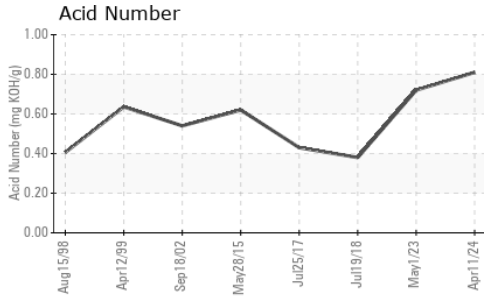
ADDITIVES		method	limit/base	current	history1	history2
Boron	ppm	ASTM D5185(m)		<b>28</b>	15	18
Barium	ppm	ASTM D5185(m)		<b>0</b>	<1	<1
Molybdenum	ppm	ASTM D5185(m)		<b>0</b>	0	3
Manganese	ppm	ASTM D5185(m)		<b>0</b>	2	1
Magnesium	ppm	ASTM D5185(m)		<b>&lt;1</b>	0	<1
Calcium	ppm	ASTM D5185(m)		<b>&lt;1</b>	<1	33
Phosphorus	ppm	ASTM D5185(m)		<b>408</b>	393	334
Zinc	ppm	ASTM D5185(m)		<b>4</b>	4	9
Sulfur	ppm	ASTM D5185(m)		<b>4813</b>	6778	14710
Lithium	ppm	ASTM D5185(m)		<b>&lt;1</b>	<1	0

CONTAMINANTS		method	limit/base	current	history1	history2
Silicon	ppm	ASTM D5185(m)	>50	<b>47</b>	18	6
Sodium	ppm	ASTM D5185(m)		<b>0</b>	<1	<1
Potassium	ppm	ASTM D5185(m)	>20	<b>&lt;1</b>	2	<1

FLUID DEGRADATION		method	limit/base	current	history1	history2
Acid Number (AN)	mg KOH/g	ASTM D974*		<b>0.81</b>	0.72	0.38



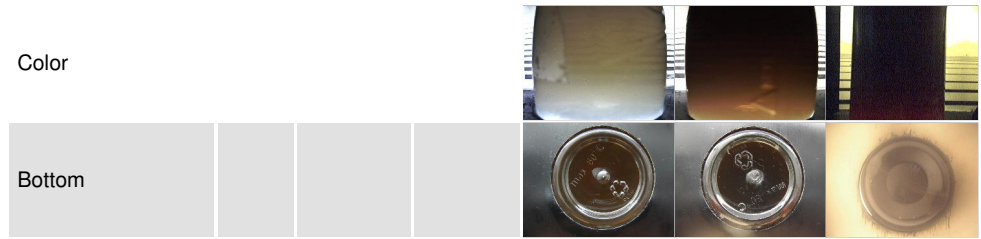
# OIL ANALYSIS REPORT



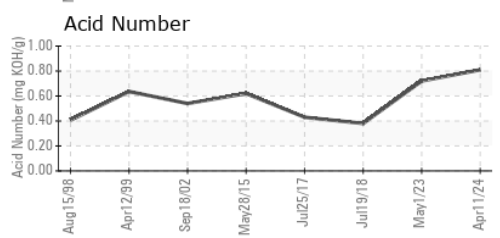
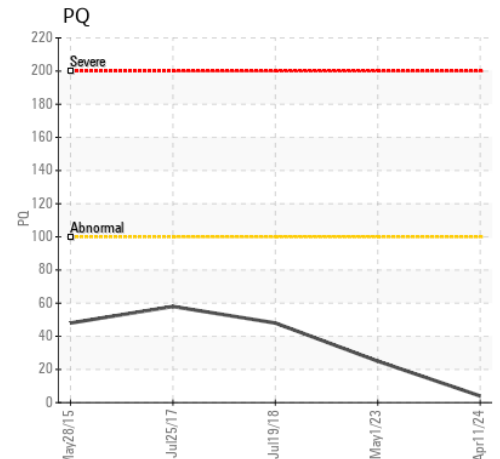
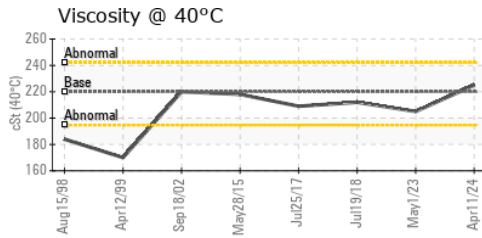
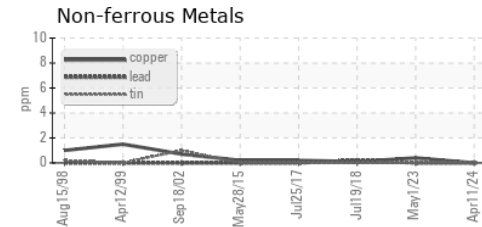
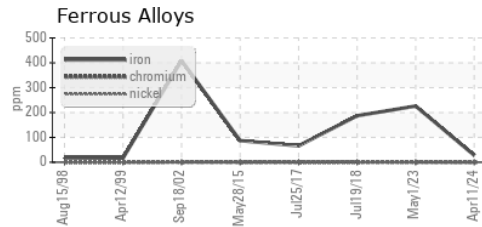
VISUAL	method	limit/base	current	history1	history2
White Metal	scalar	Visual*	NONE	NONE	NONE
Yellow Metal	scalar	Visual*	NONE	NONE	NONE
Precipitate	scalar	Visual*	NONE	NONE	NONE
Silt	scalar	Visual*	NONE	NONE	NONE
Debris	scalar	Visual*	NONE	NONE	NONE
Sand/Dirt	scalar	Visual*	NONE	NONE	NONE
Appearance	scalar	Visual*	NORML	NORML	NORML
Odor	scalar	Visual*	NORML	NORML	NORML
Emulsified Water	scalar	Visual*	>0.2	NEG	NEG
Free Water	scalar	Visual*		NEG	NEG

FLUID PROPERTIES	method	limit/base	current	history1	history2
Visc @ 40°C	cSt	ASTM D7279(m)	220	225	205

SAMPLE IMAGES	method	limit/base	current	history1	history2
---------------	--------	------------	---------	----------	----------



## GRAPHS



**Laboratory** : WearCheck - C8-1175 Appleby Line, Burlington, ON L7L 5H9  
**Sample No.** : WC0857989 **Received** : 15 Apr 2024  
**Lab Number** : 02629037 **Tested** : 16 Apr 2024  
**Unique Number** : 5762169 **Diagnosed** : 16 Apr 2024 - Wes Davis  
**Test Package** : IND 2 ( Additional Tests: TAN Man )

**Roseburg Pembroke MDF Inc.**  
 777 Fibreboard Drive  
 Pembroke, ON  
 CA K8A 6W5  
 Contact: Dan Havis  
 danielh@rfpco.com  
 T: (613)732-3939  
 F: (613)732-2869

To discuss this sample report, contact Customer Service at 1-800-268-2131.  
 Test denoted (\*) outside scope of accreditation, (m) method modified, (e) tested at external lab.  
 Validity of results and interpretation are based on the sample and information as supplied.