



COOLANT REPORT

Sample Rating Trend



SEDIMENT



Area
THE QUEEN CITY YACHT CLUB
 Machine Id
CKS01046
 Component
Coolant
 Fluid
EXTENDED LIFE COOLANT (--- GAL)

DIAGNOSIS

Recommendation

We advise that you check all areas where contaminants can enter the system. We recommend that you drain the coolant from the component if this has not already been done. We recommend an early resample to monitor this condition.

Corrosion

All metal levels are normal indicating no corrosion in the cooling system.

Contaminants

The sample contained a visible layer of foreign fluid contaminant, the origin and/or type of fluid is unknown. NOTE: The contaminant appears to be oil, but the origin is unknown as there is an insufficient amount of contaminant to process.

Coolant Condition

The nitrite level is acceptable. The pH level of this fluid is within the acceptable limits. The reserve alkalinity of this fluid is acceptable. The coolant is no longer serviceable due to the presence of contaminants.

SAMPLE INFORMATION

method	limit/base	current	history1	history2
Sample Number	Client Info	PP	---	---
Sample Date	Client Info	12 Apr 2024	---	---
Machine Age	hrs Client Info	5454	---	---
Oil Age	hrs Client Info	100	---	---
Oil Changed	Client Info	N/A	---	---
Sample Status		ABNORMAL	---	---

PHYSICAL TEST RESULTS

method	limit/base	current	history1	history2
Glycol Type	FT-IR	UNK	---	---
Specific Gravity	ASTM D1298*	1.065	---	---
pH	Scale 0-14 ASTM D1287*	7.89	---	---
Nitrites	ppm Alcan Test Kit*	840	---	---
Reserve Alkalinity	Scale 0-20 ASTM D1121*	3.4	---	---
Percentage Glycol	% ASTM D3321*	48.2	---	---
Freezing Point	°C ASTM D3321*	-35	---	---
Carboxylate		---	---	---

CORROSION INHIBITORS

method	limit/base	current	history1	history2
Silicon	ppm ASTM D5185(m)	13	---	---
Phosphorus	ppm ASTM D5185(m)	8	---	---
Boron	ppm ASTM D5185(m)	11	---	---
Molybdenum	ppm ASTM D5185(m)	578	---	---

CORROSION

method	limit/base	current	history1	history2
Iron	ppm ASTM D5185(m) >15	<1	---	---
Aluminum	ppm ASTM D5185(m) >10	7	---	---
Copper	ppm ASTM D5185(m) >10	<1	---	---
Lead	ppm ASTM D5185(m) >10	0	---	---
Tin	ppm ASTM D5185(m) >10	0	---	---
Silver	ppm ASTM D5185(m) >10	0	---	---
Zinc	ppm ASTM D5185(m)	2	---	---

CARRIER SALTS

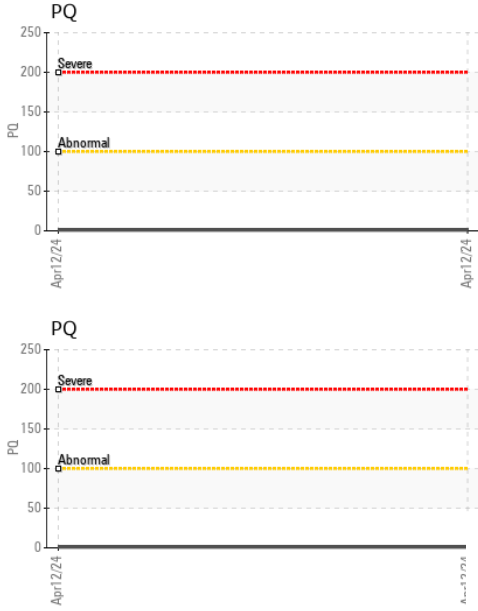
method	limit/base	current	history1	history2
Sodium	ppm ASTM D5185(m)	5060	---	---
Potassium	ppm ASTM D5185(m)	21	---	---

SCALE POTENTIAL

method	limit/base	current	history1	history2
Calcium	ppm ASTM D5185(m) >100	8	---	---
Magnesium	ppm ASTM D5185(m) >40	2	---	---
Hardness	mg/L CaCO3 In-house*	28	---	---

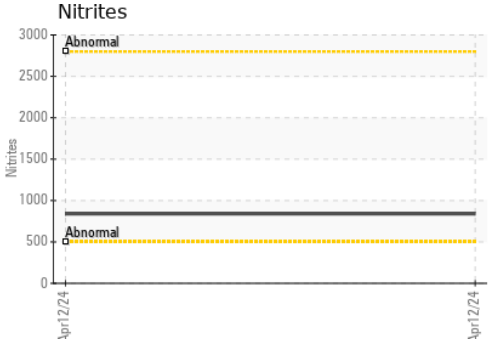
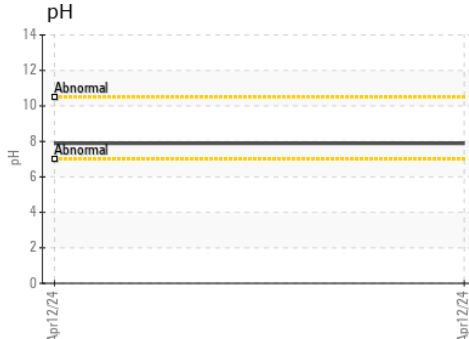
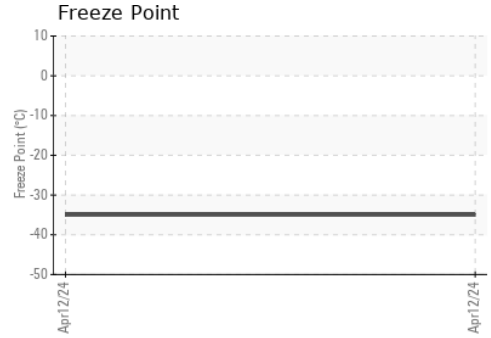
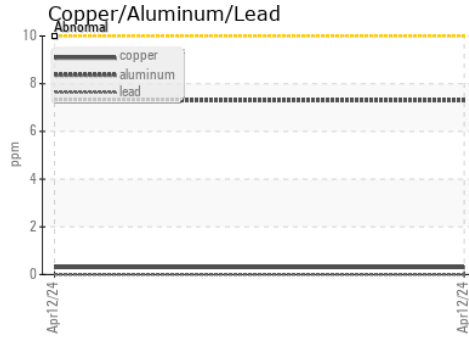
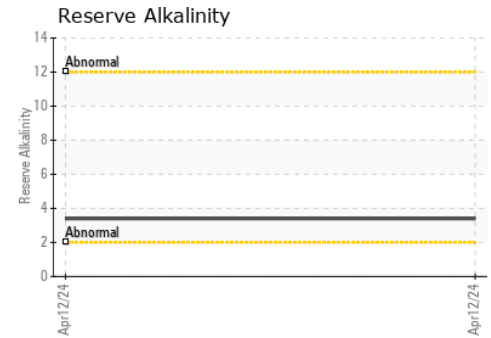
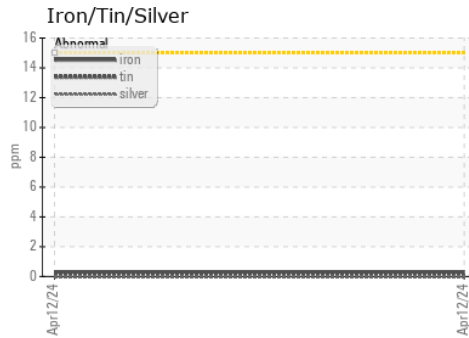


COOLANT REPORT



VISUAL	method	limit/base	current	history1	history2
Coolant Color	Visual*	Orange/R	---	---	---
Coolant Appearance	Visual*	Clear	---	---	---
Color				no image	no image
Bottom				no image	no image
PrtFilter				no image	no image

GRAPHS



Laboratory : WearCheck - C8-1175 Appleby Line, Burlington, ON L7L 5H9
Sample No. : PP
Lab Number : 02629056
Unique Number : 5762188
Test Package : COOL (Additional Tests: Bottom, BottomAnalysis, CENTRIFUGE(WARD), FILTERPATCH, GlycolType, PC)

Toromont CAT - Power Systems
 288 Orenda Rd.
 Brampton, ON
 CA L6T 1E9
 Contact: Scott McMahon
 smcmahon@toromont.com

To discuss this sample report, contact Customer Service at 1-800-268-2131.
 Test denoted (*) outside scope of accreditation, (m) method modified, (e) tested at external lab.
 Validity of results and interpretation are based on the sample and information as supplied.

T:
F: