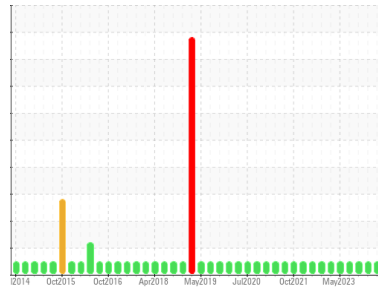




OIL ANALYSIS REPORT

Sample Rating Trend



NORMAL



Area

6

Machine Id

6-3-340 Bypass Quench Fan

Component

Gearbox

Fluid

MOBIL MOBILGEAR 600 XP 320 (100 LTR)

DIAGNOSIS

Recommendation

Resample at the next service interval to monitor.

Wear

All component wear rates are normal.

Contamination

There is no indication of any contamination in the oil.

Fluid Condition

The AN level is acceptable for this fluid. The condition of the oil is suitable for further service.

SAMPLE INFORMATION

	method	limit/base	current	history1	history2
Sample Number	Client Info		WC0925344	WC0902042	WC0869887
Sample Date	Client Info		09 Apr 2024	15 Feb 2024	23 Nov 2023
Machine Age	hrs	Client Info	0	0	0
Oil Age	hrs	Client Info	0	0	0
Oil Changed	Client Info		N/A	N/A	N/A
Sample Status			NORMAL	NORMAL	NORMAL

CONTAMINATION

	method	limit/base	current	history1	history2
Water	WC Method	>0.2	NEG	NEG	NEG

WEAR METALS

	method	limit/base	current	history1	history2
PQ	ASTM D8184*		0	0	0
Iron	ppm	ASTM D5185(m) >200	15	13	12
Chromium	ppm	ASTM D5185(m) >15	0	0	0
Nickel	ppm	ASTM D5185(m) >15	0	0	<1
Titanium	ppm	ASTM D5185(m)	0	0	0
Silver	ppm	ASTM D5185(m)	0	0	<1
Aluminum	ppm	ASTM D5185(m) >25	<1	<1	<1
Lead	ppm	ASTM D5185(m) >100	2	3	3
Copper	ppm	ASTM D5185(m) >200	<1	<1	<1
Tin	ppm	ASTM D5185(m) >25	0	0	0
Antimony	ppm	ASTM D5185(m) >5	0	0	0
Vanadium	ppm	ASTM D5185(m)	0	0	0
Beryllium	ppm	ASTM D5185(m)	0	0	0
Cadmium	ppm	ASTM D5185(m)	0	0	0

ADDITIVES

	method	limit/base	current	history1	history2
Boron	ppm	ASTM D5185(m) 57	18	18	19
Barium	ppm	ASTM D5185(m) 0.0	0	0	<1
Molybdenum	ppm	ASTM D5185(m) 2.0	0	0	0
Manganese	ppm	ASTM D5185(m) 0.0	0	0	0
Magnesium	ppm	ASTM D5185(m) 0.0	<1	1	<1
Calcium	ppm	ASTM D5185(m) 42	10	9	8
Phosphorus	ppm	ASTM D5185(m) 399	278	287	277
Zinc	ppm	ASTM D5185(m) 13	28	28	26
Sulfur	ppm	ASTM D5185(m) 13649	9832	10322	9979
Lithium	ppm	ASTM D5185(m)	<1	<1	<1

CONTAMINANTS

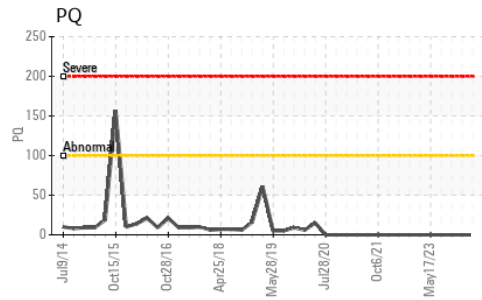
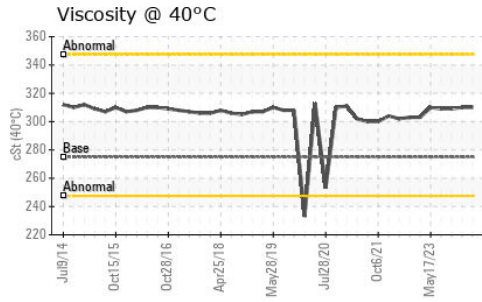
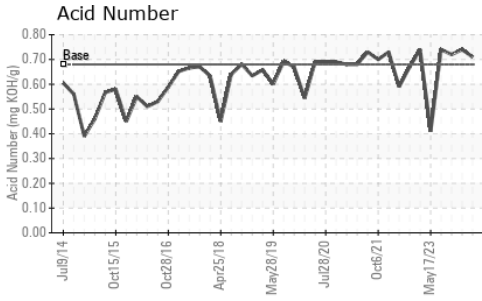
	method	limit/base	current	history1	history2
Silicon	ppm	ASTM D5185(m) >50	2	2	3
Sodium	ppm	ASTM D5185(m)	<1	<1	<1
Potassium	ppm	ASTM D5185(m) >20	1	2	<1

FLUID DEGRADATION

	method	limit/base	current	history1	history2
Acid Number (AN)	mg KOH/g	ASTM D974* 0.68	0.71	0.74	0.72



OIL ANALYSIS REPORT

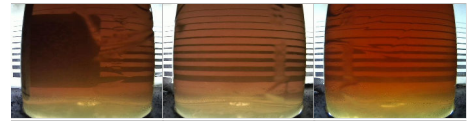


VISUAL	method	limit/base	current	history1	history2
White Metal	scalar	Visual*	NONE	NONE	NONE
Yellow Metal	scalar	Visual*	NONE	NONE	NONE
Precipitate	scalar	Visual*	NONE	NONE	NONE
Silt	scalar	Visual*	NONE	NONE	NONE
Debris	scalar	Visual*	NONE	NONE	NONE
Sand/Dirt	scalar	Visual*	NONE	NONE	NONE
Appearance	scalar	Visual*	NORML	NORML	NORML
Odor	scalar	Visual*	NORML	NORML	NORML
Emulsified Water	scalar	Visual*	>0.2	NEG	NEG
Free Water	scalar	Visual*		NEG	NEG

FLUID PROPERTIES	method	limit/base	current	history1	history2
Visc @ 40°C	cSt	ASTM D7279(m)	275	310	309

SAMPLE IMAGES	method	limit/base	current	history1	history2
---------------	--------	------------	---------	----------	----------

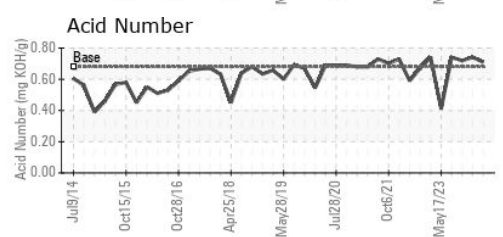
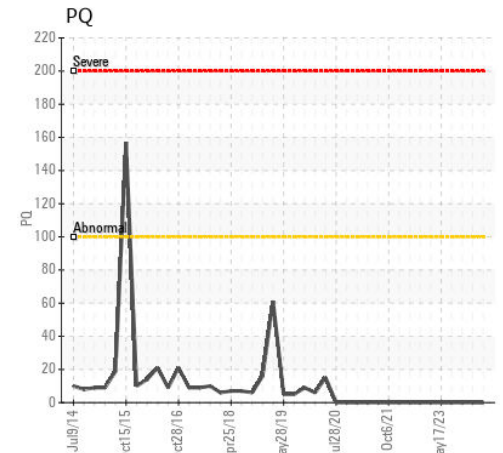
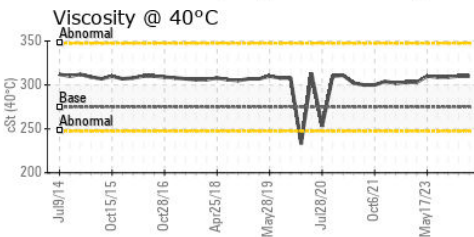
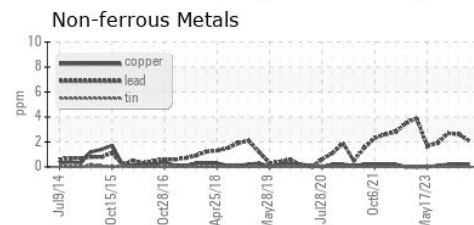
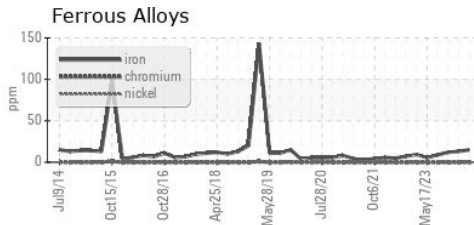
Color



Bottom



GRAPHS



Laboratory : WearCheck - C8-1175 Appleby Line, Burlington, ON L7L 5H9
Sample No. : WC0925344 **Received** : 16 Apr 2024
Lab Number : 02629355 **Tested** : 17 Apr 2024
Unique Number : 5762487 **Diagnosed** : 17 Apr 2024 - Wes Davis
Test Package : IND 2 (Additional Tests: TAN Man)

To discuss this sample report, contact Customer Service at 1-800-268-2131.
 Test denoted (*) outside scope of accreditation, (m) method modified, (e) tested at external lab.
 Validity of results and interpretation are based on the sample and information as supplied.

ST. MARYS CEMENT CO.
 400 BOWMANVILLE AVENUE
 BOWMANVILLE, ON
 CA L1C 7B5
 Contact: Lou Traiforos
 lou.traiforos@cimentos.com
 T: (905)440-5874
 F: (905)623-4695