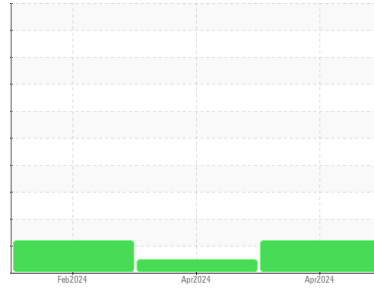




# CLEANLINESS TEST REPORT

## Sample Rating Trend



ISO



Part Number

**AT553677**

Component

**Hose Assembly**

Fluid

**KEROSENE (350 mL)**

## DIAGNOSIS

### Recommendation

This is a baseline read-out on the submitted sample. The hose or hose assembly fluid sample for analysis was collected in accordance with ISO/TS 18409 : Hydraulic fluid power - Methods of collecting a fluid sample for analysing the cleanliness of a hose or hose assembly.

### Contamination

Particles >14µm are notably high. Particles >6µm and oil cleanliness are notably high. The system cleanliness exceeds your target ISO 4406 cleanliness code. Cleanliness as per JDS-G169 Fluid Cleanliness Class 5.4 (ISO 4406 --/20/15).

## SAMPLE INFORMATION

method	limit/base	current	history1	history2
Sample Number	Client Info	<b>PH</b>	PH	PH
Sample Date	Client Info	<b>15 Apr 2024</b>	01 Apr 2024	05 Feb 2024
Machine Age	hrs	<b>0</b>	0	0
Oil Age	hrs	<b>0</b>	0	0
Oil Changed	Client Info	<b>N/A</b>	N/A	N/A
Sample Status		<b>ABNORMAL</b>	NORMAL	ABNORMAL

## CONTAMINATION

method	limit/base	current	history1	history2
Water	WC Method	<b>NEG</b>	NEG	NEG

## FLUID CLEANLINESS

method	limit/base	current	history1	history2
Particles >4µm	ASTM D7647	<b>49405</b>	5785	28758
Particles >6µm	ASTM D7647 >10000	<b>▲ 13972</b>	1598	9478
Particles >14µm	ASTM D7647 >320	<b>▲ 531</b>	86	▲ 662
Particles >21µm	ASTM D7647 >80	<b>97</b>	20	● 150
Particles >38µm	ASTM D7647 >20	<b>4</b>	1	11
Particles >71µm	ASTM D7647 >4	<b>0</b>	0	0
Oil Cleanliness	ISO 4406 (c) >--/20/15	<b>▲ 23/21/16</b>	20/18/14	▲ 22/20/17

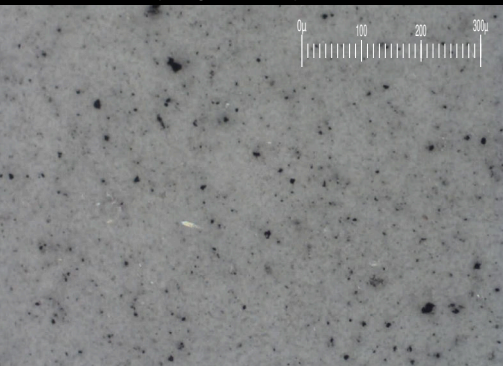
## VISUAL

method	limit/base	current	history1	history2		
White Metal	scalar	Visual*	NONE	<b>NONE</b>	NONE	NONE
Yellow Metal	scalar	Visual*	NONE	<b>NONE</b>	NONE	NONE
Precipitate	scalar	Visual*	NONE	<b>NONE</b>	NONE	NONE
Silt	scalar	Visual*	NONE	<b>NONE</b>	NONE	NONE
Debris	scalar	Visual*	NONE	<b>NONE</b>	NONE	NONE
Sand/Dirt	scalar	Visual*	NONE	<b>NONE</b>	NONE	NONE
Appearance	scalar	Visual*	NORML	<b>NORML</b>	NORML	NORML
Odor	scalar	Visual*	NORML	<b>NORML</b>	NORML	NORML

## SAMPLE IMAGES

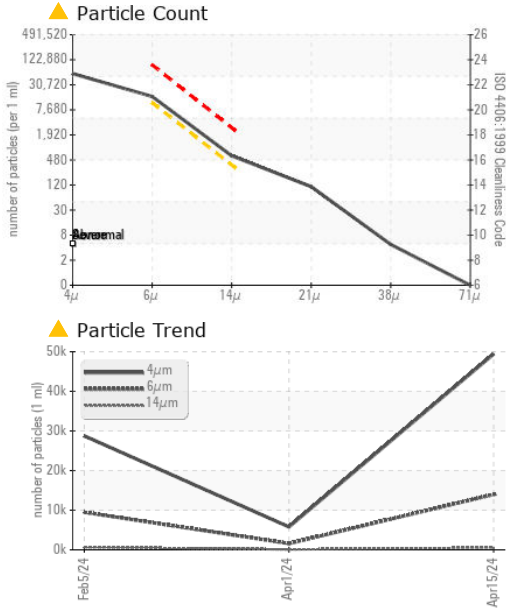
method	limit/base	current	history1	history2
Color				
Bottom				
PrtFilter				

Particle Filter (Magn: 100 x)

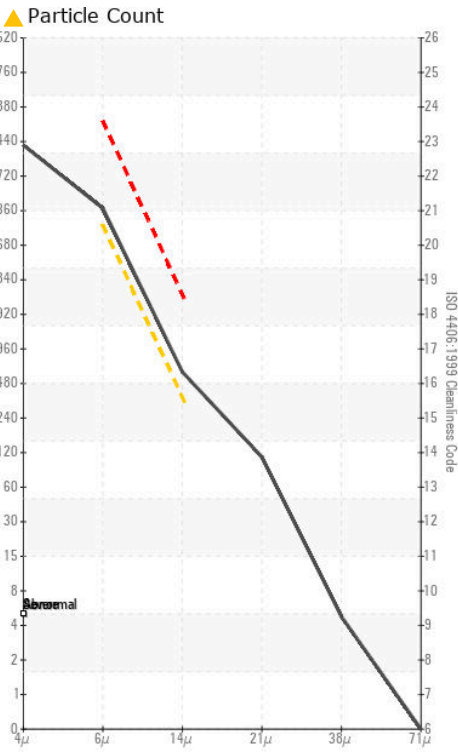




# CLEANLINESS TEST REPORT



## GRAPHS



**Laboratory** : WearCheck - C8-1175 Appleby Line, Burlington, ON L7L 5H9  
**Sample No.** : PH  
**Lab Number** : 02629415  
**Unique Number** : 5762547  
**Test Package** : TEST ( Additional Tests: PrtCount, PrtFilter, PrtFilterPic )

**Received** : 16 Apr 2024  
**Tested** : 18 Apr 2024  
**Diagnosed** : 18 Apr 2024 - Bill Quesnel

**PARKER HANNIFIN CANADA**  
 160 CHISHOLM DRIVE  
 MILTON, ON  
 CA L9T 3G9  
 Contact: Tom Raznatovic  
 tomlav.raznatovic@parker.com

To discuss this sample report, contact Customer Service at 1-800-268-2131.  
 Test denoted (\*) outside scope of accreditation, (m) method modified, (e) tested at external lab.  
 Validity of results and interpretation are based on the sample and information as supplied.

T:  
F: