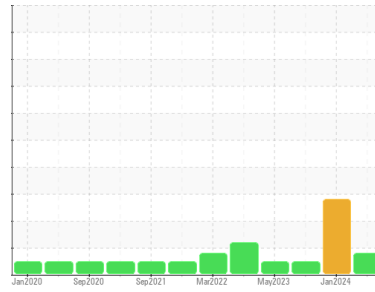




OIL ANALYSIS REPORT

Sample Rating Trend



FUEL



Area
[44093671]

Machine Id
9497

Component
Diesel Engine

Fluid
DIESEL ENGINE OIL SAE 10W30 (--- GAL)

DIAGNOSIS

Recommendation

We recommend that you drain the oil from the component if this has not already been done. We recommend an early resample to monitor this condition.

Wear

All component wear rates are normal.

Contamination

There is a moderate amount of fuel present in the oil. Tests confirm the presence of fuel in the oil.

Fluid Condition

The oil is no longer serviceable due to the presence of contaminants.

SAMPLE INFORMATION

	method	limit/base	current	history1	history2
Sample Number	Client Info		WC0924171	WC0853066	WC0796494
Sample Date	Client Info		08 Apr 2024	14 Jan 2024	08 Oct 2023
Machine Age	kms	Client Info	434049	427606	415439
Oil Age	kms	Client Info	0	0	0
Oil Changed	Client Info		Not Chngd	Changed	Not Chngd
Sample Status			ABNORMAL	SEVERE	NORMAL

CONTAMINATION

	method	limit/base	current	history1	history2
Water	WC Method	>0.2	NEG	NEG	NEG
Glycol	WC Method		NEG	NEG	NEG

WEAR METALS

	method	limit/base	current	history1	history2	
Iron	ppm	ASTM D5185(m)	>90	32	▲ 174	20
Chromium	ppm	ASTM D5185(m)	>20	2	6	2
Nickel	ppm	ASTM D5185(m)	>2	0	<1	<1
Titanium	ppm	ASTM D5185(m)	>2	0	0	0
Silver	ppm	ASTM D5185(m)	>2	0	<1	<1
Aluminum	ppm	ASTM D5185(m)	>20	5	14	2
Lead	ppm	ASTM D5185(m)	>40	5	6	1
Copper	ppm	ASTM D5185(m)	>330	1	6	<1
Tin	ppm	ASTM D5185(m)	>15	<1	2	0
Antimony	ppm	ASTM D5185(m)		0	0	0
Vanadium	ppm	ASTM D5185(m)		0	0	0
Beryllium	ppm	ASTM D5185(m)		0	0	0
Cadmium	ppm	ASTM D5185(m)		0	0	0

ADDITIVES

	method	limit/base	current	history1	history2	
Boron	ppm	ASTM D5185(m)	250	31	23	80
Barium	ppm	ASTM D5185(m)	10	0	0	<1
Molybdenum	ppm	ASTM D5185(m)	100	2	7	<1
Manganese	ppm	ASTM D5185(m)		<1	2	0
Magnesium	ppm	ASTM D5185(m)	450	749	674	706
Calcium	ppm	ASTM D5185(m)	3000	1340	1293	1273
Phosphorus	ppm	ASTM D5185(m)	1150	688	652	661
Zinc	ppm	ASTM D5185(m)	1350	777	749	747
Sulfur	ppm	ASTM D5185(m)	4250	2410	2362	2412
Lithium	ppm	ASTM D5185(m)		<1	<1	<1

CONTAMINANTS

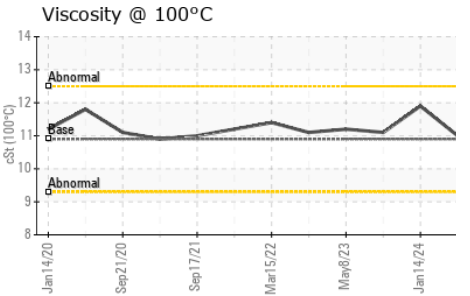
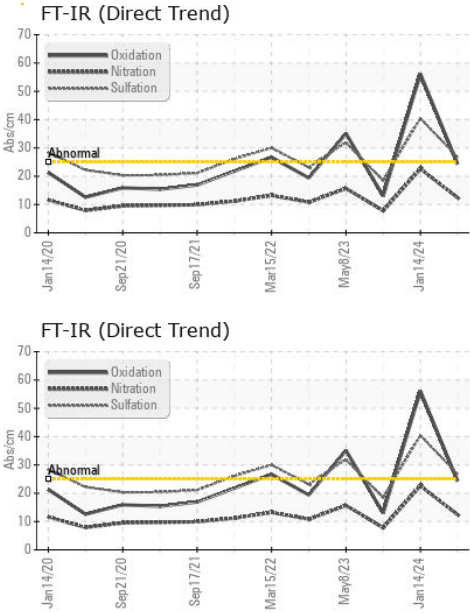
	method	limit/base	current	history1	history2	
Silicon	ppm	ASTM D5185(m)	>25	4	9	4
Sodium	ppm	ASTM D5185(m)		3	4	2
Potassium	ppm	ASTM D5185(m)	>20	3	23	4
Fuel	%	ASTM D7593*	>3.0	▲ 4	▲ 6.6	<1.0

INFRA-RED

	method	limit/base	current	history1	history2	
Soot %	%	ASTM D7844*	>6	0.3	1.4	0
Nitration	Abs/cm	ASTM D7624*	>20	12.4	22.6	7.8
Sulfation	Abs/.1mm	ASTM D7415*	>30	26.8	40.4	18.4



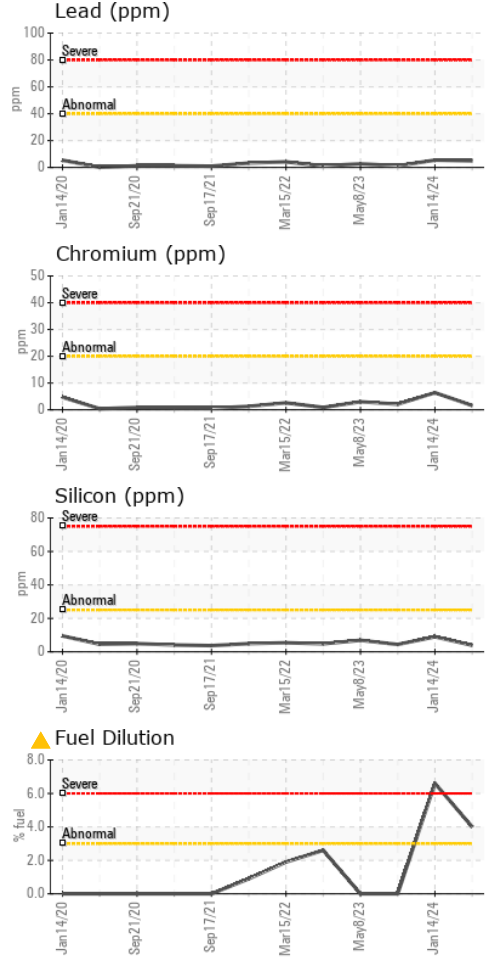
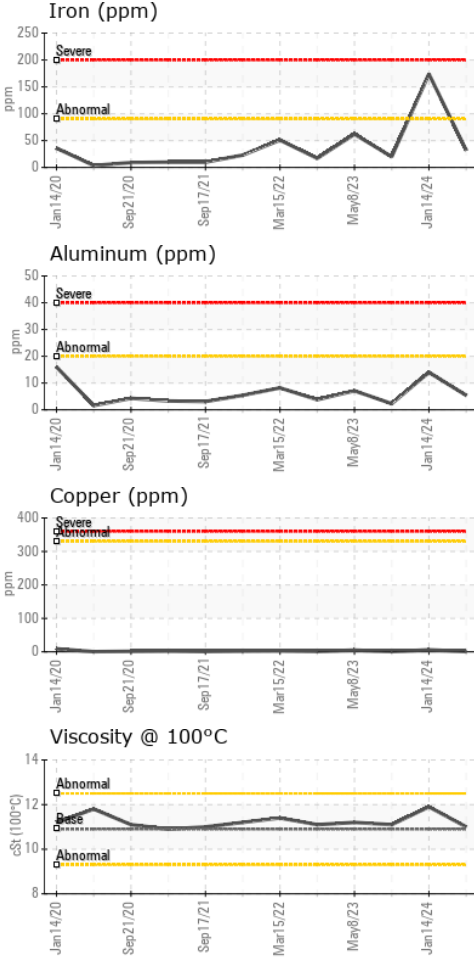
OIL ANALYSIS REPORT



FLUID DEGRADATION		method	limit/base	current	history1	history2
Oxidation	Abs./1mm	ASTM D7414*	>25	24.3	56.1	13.0
VISUAL		method	limit/base	current	history1	history2
White Metal	scalar	Visual*	NONE	NONE	---	---
Yellow Metal	scalar	Visual*	NONE	NONE	---	---
Precipitate	scalar	Visual*	NONE	NONE	---	---
Silt	scalar	Visual*	NONE	VLITE	---	---
Debris	scalar	Visual*	NONE	NONE	---	---
Sand/Dirt	scalar	Visual*	NONE	NONE	---	---
Appearance	scalar	Visual*	NORML	NORML	---	---
Odor	scalar	Visual*	NORML	NORML	NORML	NORML
Emulsified Water	scalar	Visual*	>0.2	NEG	NEG	NEG
Free Water	scalar	Visual*		NEG	NEG	NEG

FLUID PROPERTIES		method	limit/base	current	history1	history2
Visc @ 100°C	cSt	ASTM D7279(m)	10.9	11.0	11.9	11.1

GRAPHS



Laboratory : WearCheck - C8-1175 Appleby Line, Burlington, ON L7L 5H9
Sample No. : WC0924171 **Received** : 17 Apr 2024
Lab Number : **02629560** **Tested** : 18 Apr 2024
Unique Number : 5762692 **Diagnosed** : 18 Apr 2024 - Wes Davis
Test Package : MOB 1 (Additional Tests: PercentFuel, Visual)

Rush Truck Centres
 7450 Torbram Rd.
 Mississauga, ON
 CA L4T 1G9
 Contact: Serdar Okur
 sokur@rushtruckcentres.ca
 T: (905)671-7600
 F:

To discuss this sample report, contact Customer Service at 1-800-268-2131.
 Test denoted (*) outside scope of accreditation, (m) method modified, (e) tested at external lab.
 Validity of results and interpretation are based on the sample and information as supplied.