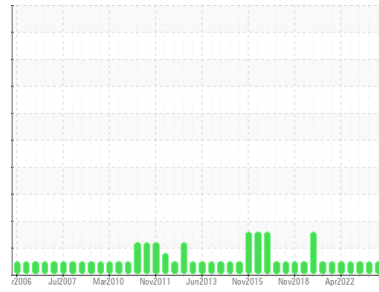




# OIL ANALYSIS REPORT

Sample Rating Trend



**NORMAL**



Machine Id  
**Unit #1, East FD Fan Out Board (S/N 69430)**  
 Component  
**Outboard Bearing**  
 Fluid  
**PETRO CANADA HYDREX AW 68 (7 LTR)**

## DIAGNOSIS

### Recommendation

Resample at the next service interval to monitor.

### Wear

All component wear rates are normal.

### Contamination

There is no indication of any contamination in the oil.

### Fluid Condition

The AN level is acceptable for this fluid. The condition of the oil is suitable for further service.

## SAMPLE INFORMATION

	method	limit/base	current	history1	history2
Sample Number	Client Info		<b>WC0805086</b>	WC0805151	WC0805177
Sample Date	Client Info		<b>09 Apr 2024</b>	23 Nov 2023	02 May 2023
Machine Age	mths	Client Info	<b>0</b>	0	0
Oil Age	mths	Client Info	<b>0</b>	0	0
Oil Changed	Client Info		<b>N/A</b>	N/A	N/A
Sample Status			<b>NORMAL</b>	NORMAL	NORMAL

## CONTAMINATION

	method	limit/base	current	history1	history2
Water	WC Method	>2	<b>NEG</b>	NEG	NEG

## WEAR METALS

	method	limit/base	current	history1	history2
PQ	ASTM D8184*		<b>0</b>	0	0
Iron	ppm	ASTM D5185(m) >20	<b>2</b>	2	4
Chromium	ppm	ASTM D5185(m) >20	<b>0</b>	0	0
Nickel	ppm	ASTM D5185(m) >20	<b>0</b>	0	<1
Titanium	ppm	ASTM D5185(m)	<b>0</b>	0	0
Silver	ppm	ASTM D5185(m)	<b>0</b>	0	<1
Aluminum	ppm	ASTM D5185(m) >20	<b>0</b>	<1	<1
Lead	ppm	ASTM D5185(m) >20	<b>0</b>	<1	<1
Copper	ppm	ASTM D5185(m) >20	<b>&lt;1</b>	<1	<1
Tin	ppm	ASTM D5185(m) >20	<b>1</b>	2	2
Antimony	ppm	ASTM D5185(m)	<b>0</b>	0	0
Vanadium	ppm	ASTM D5185(m)	<b>0</b>	0	0
Beryllium	ppm	ASTM D5185(m)	<b>0</b>	0	0
Cadmium	ppm	ASTM D5185(m)	<b>0</b>	0	0

## ADDITIVES

	method	limit/base	current	history1	history2
Boron	ppm	ASTM D5185(m) 0	<b>0</b>	0	<1
Barium	ppm	ASTM D5185(m) 0	<b>0</b>	0	0
Molybdenum	ppm	ASTM D5185(m) 0	<b>0</b>	0	0
Manganese	ppm	ASTM D5185(m) 0	<b>0</b>	0	0
Magnesium	ppm	ASTM D5185(m) 0	<b>&lt;1</b>	<1	<1
Calcium	ppm	ASTM D5185(m) 50	<b>49</b>	51	43
Phosphorus	ppm	ASTM D5185(m) 330	<b>320</b>	338	288
Zinc	ppm	ASTM D5185(m) 430	<b>416</b>	419	341
Sulfur	ppm	ASTM D5185(m) 760	<b>701</b>	805	2763
Lithium	ppm	ASTM D5185(m)	<b>&lt;1</b>	<1	<1

## CONTAMINANTS

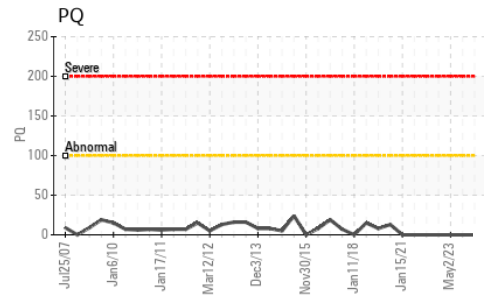
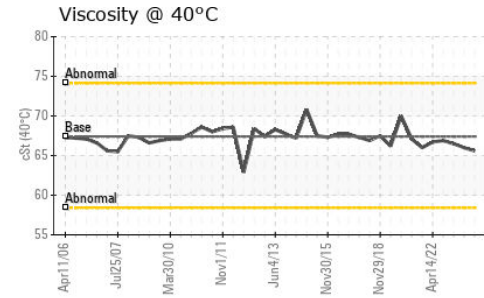
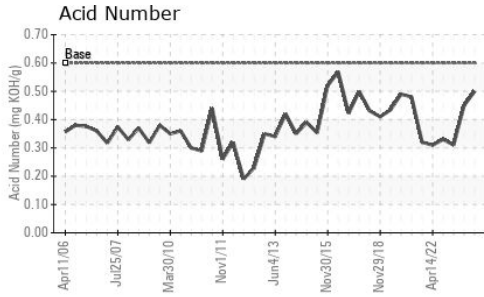
	method	limit/base	current	history1	history2
Silicon	ppm	ASTM D5185(m) >15	<b>4</b>	4	9
Sodium	ppm	ASTM D5185(m)	<b>&lt;1</b>	0	0
Potassium	ppm	ASTM D5185(m) >20	<b>0</b>	<1	<1

## FLUID DEGRADATION

	method	limit/base	current	history1	history2
Acid Number (AN)	mg KOH/g	ASTM D974* 0.60	<b>0.50</b>	0.45	0.31



# OIL ANALYSIS REPORT



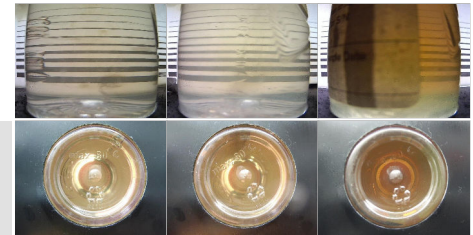
VISUAL	method	limit/base	current	history1	history2
White Metal	scalar	Visual*	NONE	NONE	VLITE
Yellow Metal	scalar	Visual*	NONE	NONE	NONE
Precipitate	scalar	Visual*	NONE	NONE	NONE
Silt	scalar	Visual*	NONE	NONE	NONE
Debris	scalar	Visual*	NONE	NONE	VLITE
Sand/Dirt	scalar	Visual*	NONE	VLITE	NONE
Appearance	scalar	Visual*	NORML	NORML	NORML
Odor	scalar	Visual*	NORML	NORML	NORML
Emulsified Water	scalar	Visual*	>2	NEG	NEG
Free Water	scalar	Visual*		NEG	NEG

FLUID PROPERTIES	method	limit/base	current	history1	history2
Visc @ 40°C	cSt	ASTM D7279(m)	67.4	65.6	66.0

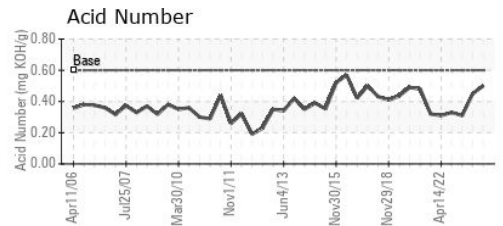
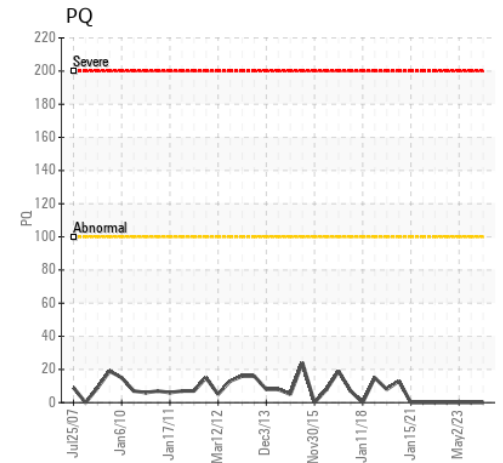
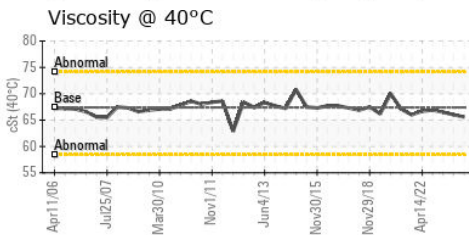
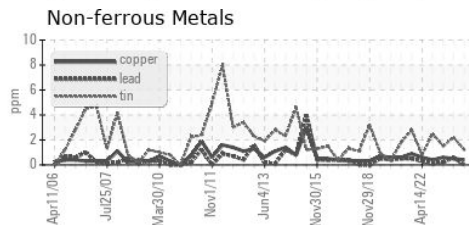
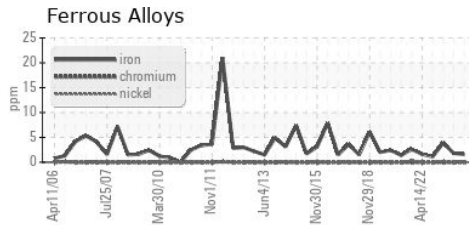
SAMPLE IMAGES	method	limit/base	current	history1	history2
---------------	--------	------------	---------	----------	----------

Color

Bottom



## GRAPHS



**Laboratory** : WearCheck - C8-1175 Appleby Line, Burlington, ON L7L 5H9  
**Sample No.** : WC0805086 **Received** : 18 Apr 2024  
**Lab Number** : 02629941 **Tested** : 19 Apr 2024  
**Unique Number** : 5763073 **Diagnosed** : 19 Apr 2024 - Wes Davis  
**Test Package** : IND 2 ( Additional Tests: TAN Man )

**NEWFOUNDLAND & LABRADOR HYDRO**  
 HOLYROOD THERMAL GEN. STN., PO BOX 29, DUFFS RD  
 CONCEPTION BAY, NL  
 CA A0A 2R0  
 Contact: Rory Tweedie  
 rorytweedie@nlh.nl.ca  
 T: (709)229-2764  
 F: (709)229-7894

To discuss this sample report, contact Customer Service at 1-800-268-2131.  
 Test denoted (\*) outside scope of accreditation, (m) method modified, (e) tested at external lab.  
 Validity of results and interpretation are based on the sample and information as supplied.