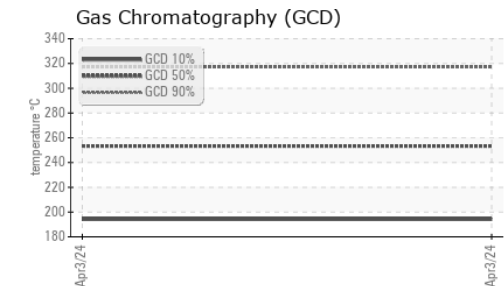
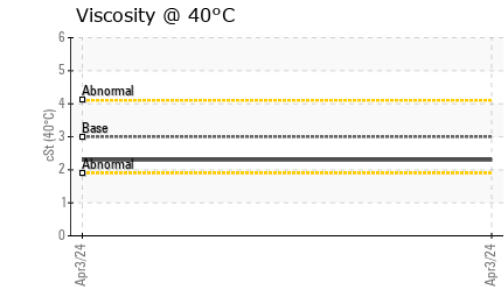
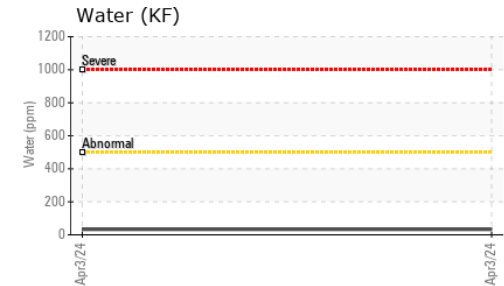
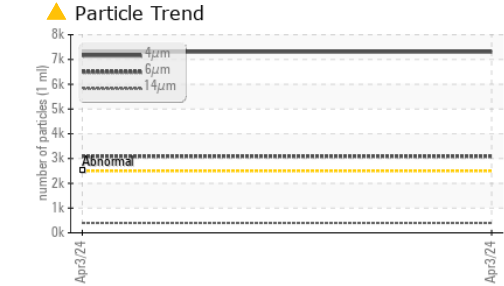
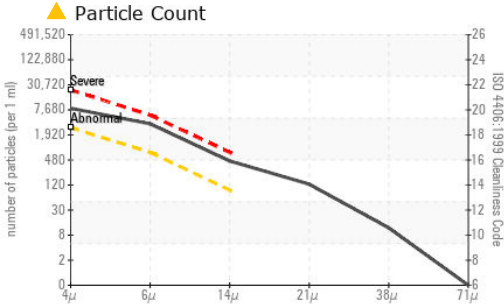






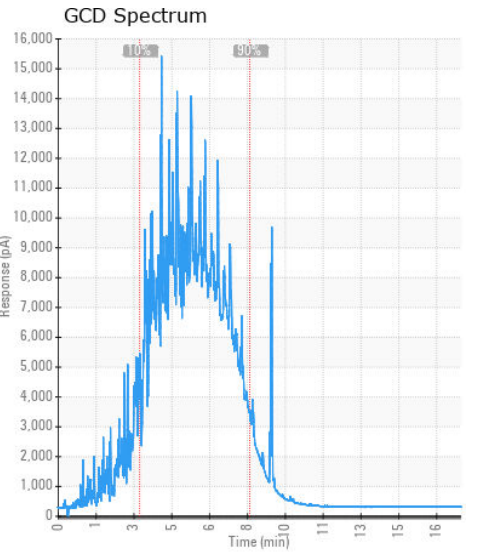
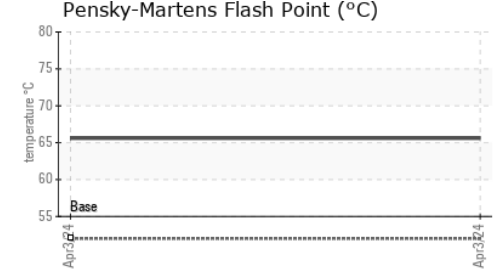
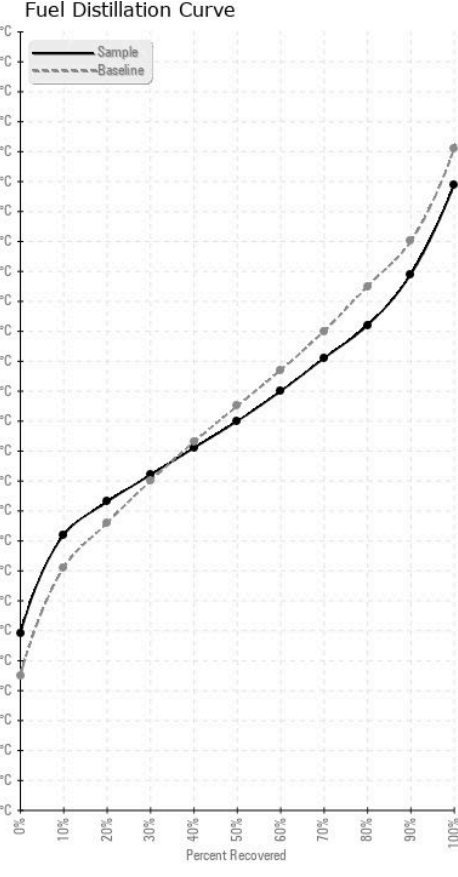
# FUEL REPORT



| HEAVY METALS | method | limit/base    | current | history1 | history2 |
|--------------|--------|---------------|---------|----------|----------|
| Aluminum     | ppm    | ASTM D5185(m) | <0.1    | 0        | ---      |
| Nickel       | ppm    | ASTM D5185(m) | <0.1    | 0        | ---      |
| Lead         | ppm    | ASTM D5185(m) | <0.1    | 0        | ---      |
| Vanadium     | ppm    | ASTM D5185(m) | <0.1    | 0        | ---      |
| Iron         | ppm    | ASTM D5185(m) | <0.1    | 0        | ---      |
| Calcium      | ppm    | ASTM D5185(m) | <0.1    | 0        | ---      |
| Magnesium    | ppm    | ASTM D5185(m) | <0.1    | 0        | ---      |
| Phosphorus   | ppm    | ASTM D5185(m) | <0.1    | <1       | ---      |
| Zinc         | ppm    | ASTM D5185(m) | <0.1    | 1        | ---      |

| SAMPLE IMAGES | method | limit/base | current | history1 | history2 |
|---------------|--------|------------|---------|----------|----------|
| Color         |        |            |         | no image | no image |
| Bottom        |        |            |         | no image | no image |

## GRAPHS



**Laboratory** : WearCheck - C8-1175 Appleby Line, Burlington, ON L7L 5H9  
**Sample No.** : KT0001052 **Received** : 18 Apr 2024  
**Lab Number** : 02630019 **Tested** : 22 Apr 2024  
**Unique Number** : 5763151 **Diagnosed** : 22 Apr 2024 - Kevin Marson  
**Test Package** : FUEL ( Additional Tests: CC Flash, PrtCount )

**AgZone Inc.**  
 5310 Pyrogy Drive  
 Glendon, AB  
 CA T0A 1P0  
 Contact: Shane Kissel  
 shane.kissel@agzone.ca  
 T: (780)635-3936  
 F:

To discuss this sample report, contact Customer Service at 1-800-268-2131.  
 Test denoted (\*) outside scope of accreditation, (m) method modified, (e) tested at external lab.  
 Validity of results and interpretation are based on the sample and information as supplied.