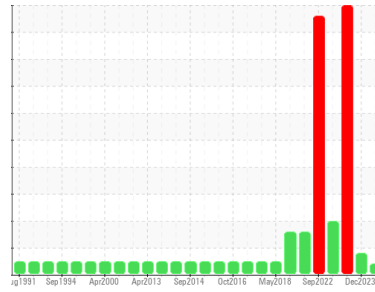




# OIL ANALYSIS REPORT

Sample Rating Trend



## VISCOSITY



Area

Lime Kilns Route #2 [102298]

Machine Id

KVS 12.6 102298 K1 P2 NW Bearing

Component

Bearing

Fluid

MOBIL MOBILGEAR SHC 1500 (40 LTR)

### DIAGNOSIS

#### Recommendation

Resample at the next service interval to monitor.

#### Wear

All component wear rates are normal.

#### Contamination

There is no indication of any contamination in the oil.

#### Fluid Condition

The oil viscosity is lower than typical, possibly indicating the addition of lighter grade oil. The AN level is acceptable for this fluid. The condition of the oil is suitable for further service.

### SAMPLE INFORMATION

	method	limit/base	current	history1	history2
Sample Number	Client Info		WC0890804	WC0877635	WC0868749
Sample Date	Client Info		09 Apr 2024	12 Dec 2023	17 Nov 2023
Machine Age	yrs	Client Info	0	0	0
Oil Age	yrs	Client Info	0	0	0
Oil Changed	Client Info		N/A	N/A	N/A
Sample Status			ABNORMAL	ABNORMAL	SEVERE

### CONTAMINATION

	method	limit/base	current	history1	history2
Water	WC Method	>2	NEG	NEG	NEG

### WEAR METALS

	method	limit/base	current	history1	history2
PQ	ASTM D8184*		4	0	46
Iron	ppm	ASTM D5185(m) >75	18	16	57
Chromium	ppm	ASTM D5185(m) >20	0	0	<1
Nickel	ppm	ASTM D5185(m) >20	<1	<1	2
Titanium	ppm	ASTM D5185(m)	6	3	4
Silver	ppm	ASTM D5185(m)	0	0	<1
Aluminum	ppm	ASTM D5185(m) >20	<1	<1	1
Lead	ppm	ASTM D5185(m) >150	57	93	▲ 239
Copper	ppm	ASTM D5185(m) >250	159	▲ 392	▲ 616
Tin	ppm	ASTM D5185(m) >20	10	19	▲ 41
Antimony	ppm	ASTM D5185(m)	<1	2	7
Vanadium	ppm	ASTM D5185(m)	0	0	0
Beryllium	ppm	ASTM D5185(m)	0	0	0
Cadmium	ppm	ASTM D5185(m)	0	0	0

### ADDITIVES

	method	limit/base	current	history1	history2
Boron	ppm	ASTM D5185(m)	24	18	19
Barium	ppm	ASTM D5185(m)	0	0	0
Molybdenum	ppm	ASTM D5185(m)	0	3	4
Manganese	ppm	ASTM D5185(m)	0	0	0
Magnesium	ppm	ASTM D5185(m)	2	7	10
Calcium	ppm	ASTM D5185(m)	26	20	100
Phosphorus	ppm	ASTM D5185(m)	196	155	183
Zinc	ppm	ASTM D5185(m)	5	14	18
Sulfur	ppm	ASTM D5185(m)	3735	2577	2544
Lithium	ppm	ASTM D5185(m)	<1	<1	<1

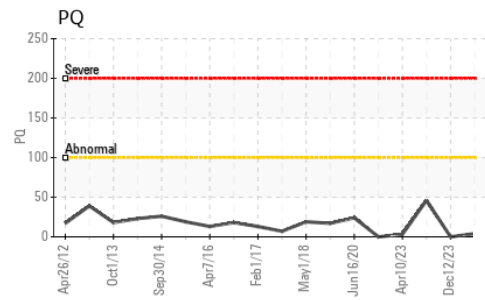
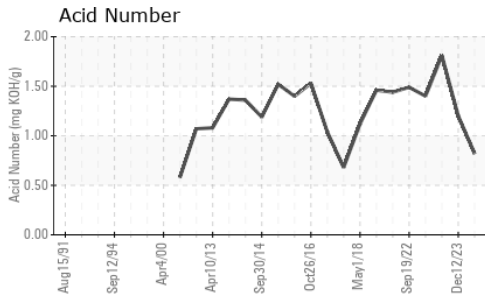
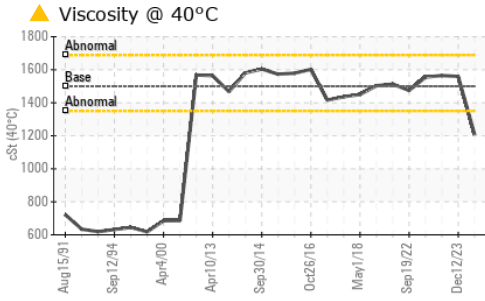
### CONTAMINANTS

	method	limit/base	current	history1	history2
Silicon	ppm	ASTM D5185(m) >15	10	12	▲ 17
Sodium	ppm	ASTM D5185(m)	2	<1	1
Potassium	ppm	ASTM D5185(m) >20	<1	<1	1

### FLUID DEGRADATION

	method	limit/base	current	history1	history2
Acid Number (AN)	mg KOH/g	ASTM D974*	0.82	1.20	▲ 1.81

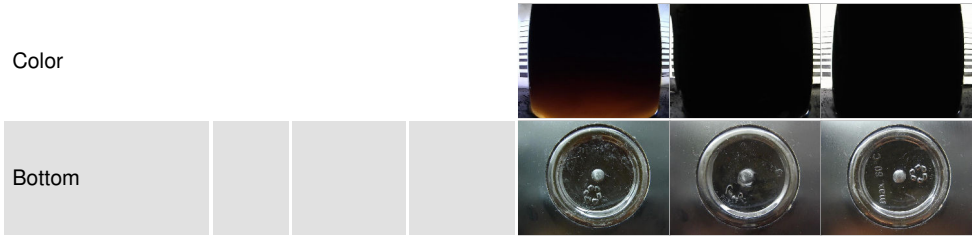
# OIL ANALYSIS REPORT



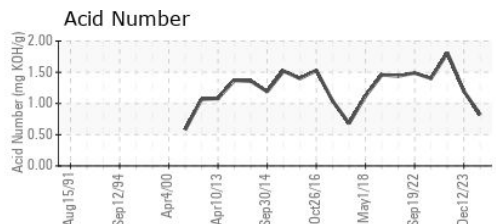
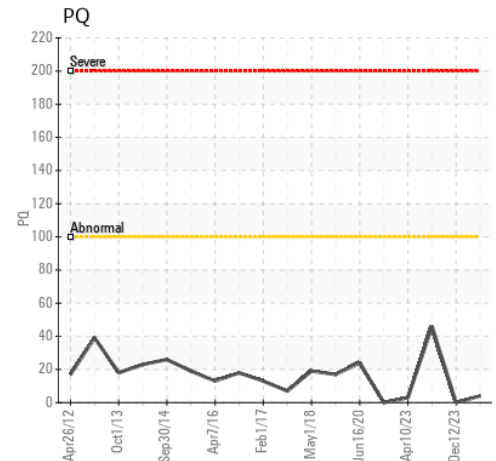
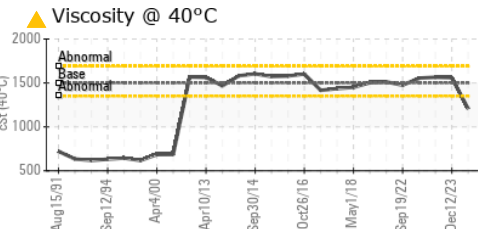
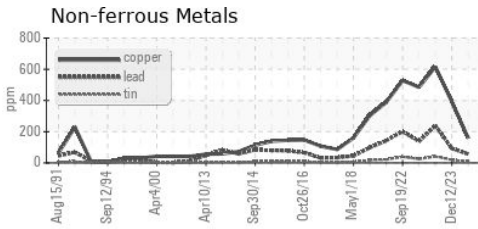
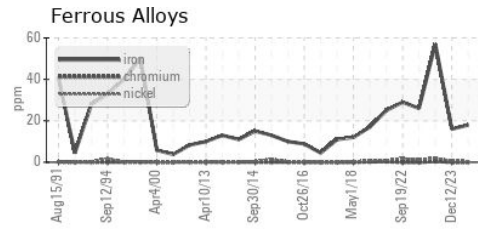
VISUAL	method	limit/base	current	history1	history2
White Metal	scalar	Visual*	NONE	NONE	NONE
Yellow Metal	scalar	Visual*	NONE	NONE	NONE
Precipitate	scalar	Visual*	NONE	NONE	NONE
Silt	scalar	Visual*	NONE	VLITE	LIGHT
Debris	scalar	Visual*	NONE	NONE	LIGHT
Sand/Dirt	scalar	Visual*	NONE	VLITE	NONE
Appearance	scalar	Visual*	NORML	NORML	NORML
Odor	scalar	Visual*	NORML	NORML	NORML
Emulsified Water	scalar	Visual*	>2	NEG	NEG
Free Water	scalar	Visual*		NEG	NEG

FLUID PROPERTIES	method	limit/base	current	history1	history2
Visc @ 40°C	cSt	ASTM D7279(m)	1500 ▲ 1206	1559	1565

SAMPLE IMAGES	method	limit/base	current	history1	history2
---------------	--------	------------	---------	----------	----------



## GRAPHS



**Laboratory** : WearCheck - C8-1175 Appleby Line, Burlington, ON L7L 5H9  
**Sample No.** : WC0890804 **Received** : 19 Apr 2024  
**Lab Number** : 02630262 **Tested** : 23 Apr 2024  
**Unique Number** : 5763394 **Diagnosed** : 23 Apr 2024 - Kevin Marson  
**Test Package** : IND 2 ( Additional Tests: TAN Man )

**CARMEUSE LIME**  
 374681 OXFORD COUNTY ROAD 6., P.O. BOX 190  
 INGERSOLL, ON  
 CA N5C 3K5  
 Contact: Jeff Geddes  
 jeff.geddes@carmeusena.com  
 T: (519)423-6283  
 F: (519)423-6568

To discuss this sample report, contact Customer Service at 1-800-268-2131.  
 Test denoted (\*) outside scope of accreditation, (m) method modified, (e) tested at external lab.  
 Validity of results and interpretation are based on the sample and information as supplied.