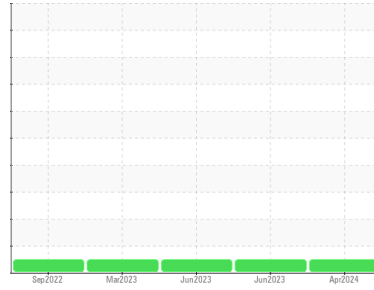




# OIL ANALYSIS REPORT

## Sample Rating Trend



**NORMAL**



Area  
**EAST CRANE**  
 Machine Id  
**170831**  
 Component  
**5 Slewing Gearbox**  
 Fluid  
**GEAR OIL SAE 75W90 (--- GAL)**

### DIAGNOSIS

#### Recommendation

Little or no information is provided as to the component and lubricant being tested. Recommendations are therefore generic in nature and may not apply to the current application. Please forward information as to equipment type, reservoir capacity, lubricant type and any pertinent information to allow for a more accurate assessment. Resample at the next service interval to monitor. NOTE: Please provide information regarding reservoir capacity, filter type and micron rating with next sample. Please specify the brand, type, and viscosity of the oil on your next sample.

#### Wear

All component wear rates are normal.

#### Contamination

There is no indication of any contamination in the oil.

#### Fluid Condition

The AN level is acceptable for this fluid. The condition of the oil is suitable for further service.

SAMPLE INFORMATION		method	limit/base	current	history1	history2
Sample Number	Client Info			<b>PP</b>	PP	PP
Sample Date	Client Info			<b>18 Apr 2024</b>	26 Jun 2023	26 Jun 2023
Machine Age	hrs	Client Info		<b>0</b>	0	0
Oil Age	hrs	Client Info		<b>0</b>	0	0
Oil Changed	Client Info			<b>N/A</b>	N/A	N/A
Sample Status				<b>NORMAL</b>	NORMAL	NORMAL

CONTAMINATION		method	limit/base	current	history1	history2
Water	WC Method		>0.2	<b>NEG</b>	NEG	NEG

WEAR METALS		method	limit/base	current	history1	history2
PQ		ASTM D8184*		<b>2</b>	0	0
Iron	ppm	ASTM D5185(m)	>50	<b>27</b>	15	30
Chromium	ppm	ASTM D5185(m)	>10	<b>0</b>	<1	<1
Nickel	ppm	ASTM D5185(m)	>10	<b>0</b>	<1	<1
Titanium	ppm	ASTM D5185(m)		<b>0</b>	0	0
Silver	ppm	ASTM D5185(m)		<b>0</b>	0	<1
Aluminum	ppm	ASTM D5185(m)		<b>0</b>	3	1
Lead	ppm	ASTM D5185(m)	>15	<b>0</b>	<1	<1
Copper	ppm	ASTM D5185(m)	>10	<b>4</b>	11	8
Tin	ppm	ASTM D5185(m)	>10	<b>0</b>	<1	<1
Antimony	ppm	ASTM D5185(m)	>5	<b>0</b>	0	0
Vanadium	ppm	ASTM D5185(m)		<b>0</b>	0	0
Beryllium	ppm	ASTM D5185(m)		<b>0</b>	0	0
Cadmium	ppm	ASTM D5185(m)		<b>0</b>	0	0

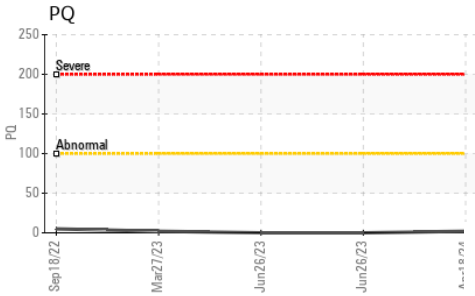
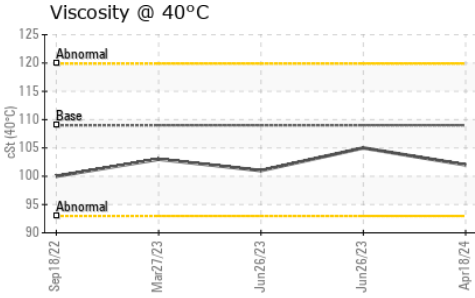
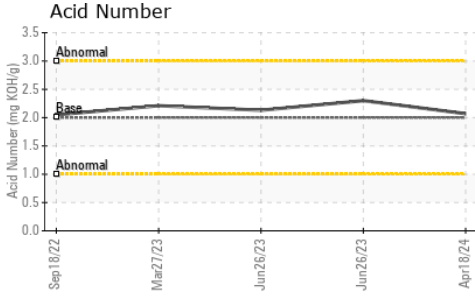
ADDITIVES		method	limit/base	current	history1	history2
Boron	ppm	ASTM D5185(m)	400	<b>281</b>	375	315
Barium	ppm	ASTM D5185(m)	200	<b>0</b>	0	0
Molybdenum	ppm	ASTM D5185(m)	12	<b>0</b>	0	0
Manganese	ppm	ASTM D5185(m)		<b>0</b>	<1	<1
Magnesium	ppm	ASTM D5185(m)	12	<b>11</b>	308	91
Calcium	ppm	ASTM D5185(m)	150	<b>2</b>	15	5
Phosphorus	ppm	ASTM D5185(m)	1650	<b>1353</b>	1509	1458
Zinc	ppm	ASTM D5185(m)	125	<b>5</b>	9	7
Sulfur	ppm	ASTM D5185(m)	22500	<b>22793</b>	22517	22897
Lithium	ppm	ASTM D5185(m)		<b>&lt;1</b>	<1	<1

CONTAMINANTS		method	limit/base	current	history1	history2
Silicon	ppm	ASTM D5185(m)	>25	<b>&lt;1</b>	7	4
Sodium	ppm	ASTM D5185(m)		<b>&lt;1</b>	2	<1
Potassium	ppm	ASTM D5185(m)	>20	<b>&lt;1</b>	<1	<1

FLUID DEGRADATION		method	limit/base	current	history1	history2
Acid Number (AN)	mg KOH/g	ASTM D974*	2.00	<b>2.07</b>	2.30	2.13



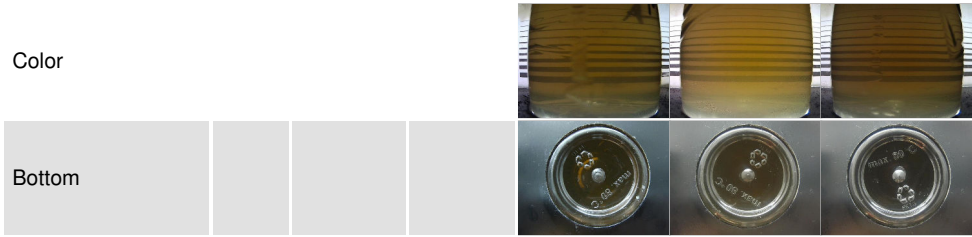
# OIL ANALYSIS REPORT



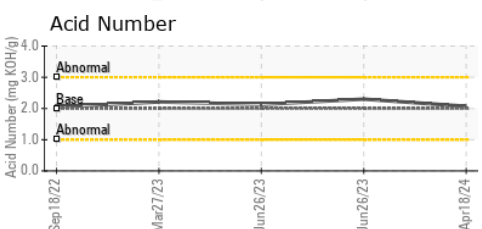
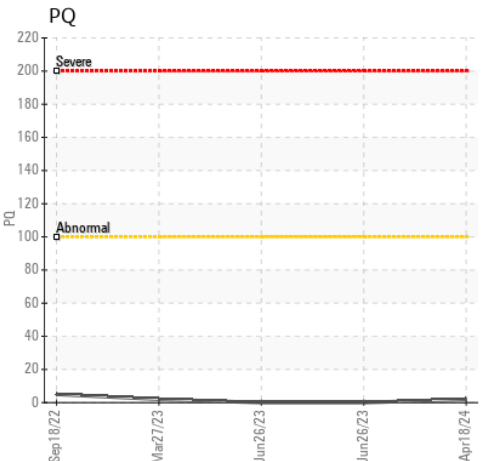
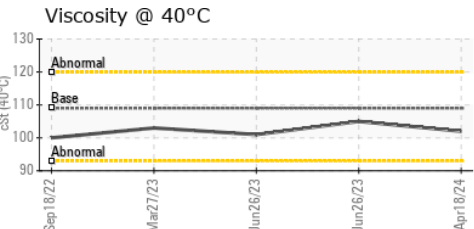
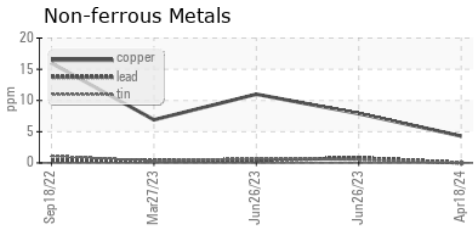
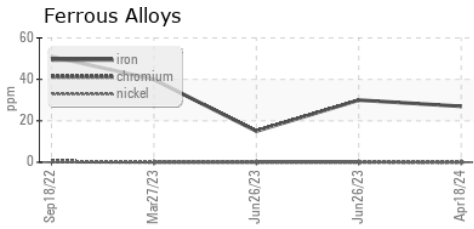
VISUAL	method	limit/base	current	history1	history2
White Metal	scalar	Visual*	NONE	NONE	VLITE
Yellow Metal	scalar	Visual*	NONE	NONE	NONE
Precipitate	scalar	Visual*	NONE	NONE	NONE
Silt	scalar	Visual*	NONE	NONE	VLITE
Debris	scalar	Visual*	NONE	NONE	VLITE
Sand/Dirt	scalar	Visual*	NONE	VLITE	NONE
Appearance	scalar	Visual*	NORML	NORML	NORML
Odor	scalar	Visual*	NORML	NORML	NORML
Emulsified Water	scalar	Visual*	>0.2	NEG	NEG
Free Water	scalar	Visual*		NEG	NEG

FLUID PROPERTIES	method	limit/base	current	history1	history2
Visc @ 40°C	cSt	ASTM D7279(m)	109	102	105

SAMPLE IMAGES	method	limit/base	current	history1	history2
---------------	--------	------------	---------	----------	----------



## GRAPHS



**Laboratory** : WearCheck - C8-1175 Appleby Line, Burlington, ON L7L 5H9  
**Sample No.** : PP  
**Lab Number** : 02630382  
**Unique Number** : 5763514  
**Test Package** : IND 2 ( Additional Tests: TAN Man )

**HIBERNIA MGMT & DEVELOPMENT CO. LTD**  
 SUITE 1000,, 100 NEW GOWER STREET  
 ST.JOHN'S, NL  
 CA A1C 6K3

To discuss this sample report, contact Customer Service at 1-800-268-2131.  
 Test denoted (\*) outside scope of accreditation, (m) method modified, (e) tested at external lab.  
 Validity of results and interpretation are based on the sample and information as supplied.

Contact: Sam Nash  
 samantha.m.nash@exxonmobil.com  
 T:  
 F: (709)722-3766