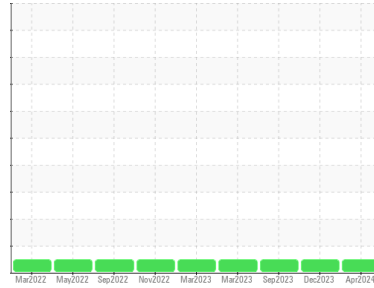




GREASE ANALYSIS

Sample Rating Trend



NORMAL



Area
EAST CRANE
 Machine Id
170831 GREASE 90 EAST
 Component
Grease
 Fluid
IRVING LUBEX SYN 2 46 (--- GAL)

DIAGNOSIS

Recommendation

Resample at the next service interval to monitor.

Wear

All component wear rates are normal.

Grease Condition

The condition of the grease is acceptable for the time in service.

Contaminants

There is no indication of any contamination in the grease.

SAMPLE INFORMATION		method	limit/base	current	history1	history2
Sample Number	Client Info			PP	PP	PP
Sample Date	Client Info			18 Apr 2024	10 Dec 2023	10 Sep 2023
Machine Age	hrs	Client Info		0	0	0
Grease Age	hrs	Client Info		0	0	0
Grease Serviced	Client Info			N/A	N/A	N/A
Sample Status				NORMAL	NORMAL	NORMAL

CONTAMINATION		method	limit/base	current	history1	history2
Water	WC Method		>0.1	NEG	NEG	NEG

WEAR METALS		method	limit/base	current	history1	history2
PQ		ASTM D8184*	>200	220	250	0
Iron	ppm	ASTM D5185(m)	>250	31	34	24
Chromium	ppm	ASTM D5185(m)	>10	<1	<1	<1
Nickel	ppm	ASTM D5185(m)	>5	<1	<1	<1
Cadmium	ppm	ASTM D5185(m)		0	0	0
Titanium	ppm	ASTM D5185(m)		<1	0	<1
Vanadium	ppm	ASTM D5185(m)		0	0	0
Lead	ppm	ASTM D5185(m)	>25	0	<1	0
Copper	ppm	ASTM D5185(m)	>75	<1	<1	<1
Tin	ppm	ASTM D5185(m)	>5	0	0	0
Silver	ppm	ASTM D5185(m)	>5	0	<1	0

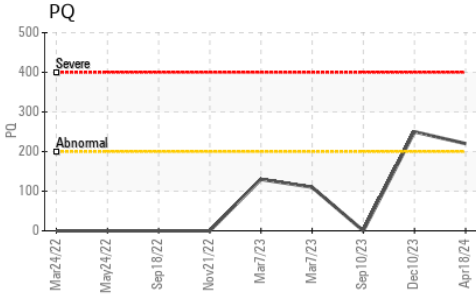
ADDITIVES		method	limit/base	current	history1	history2
Boron	ppm	ASTM D5185(m)		6	7	5
Magnesium	ppm	ASTM D5185(m)		25	25	20
Manganese	ppm	ASTM D5185(m)		<1	0	<1
Molybdenum	ppm	ASTM D5185(m)		0	0	0
Phosphorus	ppm	ASTM D5185(m)		249	271	235
Zinc	ppm	ASTM D5185(m)		79	97	83
Antimony	ppm	ASTM D5185(m)		0	0	0

THICKENER/SOAP		method	limit/base	current	history1	history2
Aluminum	ppm	ASTM D5185(m)		4	4	3
Barium	ppm	ASTM D5185(m)		<1	<1	<1
Calcium	ppm	ASTM D5185(m)		5688	6217	4572
Sodium	ppm	ASTM D5185(m)		26	26	17
Lithium	ppm	ASTM D5185(m)		90	100	89
Sulfur	ppm	ASTM D5185(m)		852	893	782

CONTAMINANTS		method	limit/base	current	history1	history2
Silicon	ppm	ASTM D5185(m)	>150	15	16	12
Potassium	ppm	ASTM D5185(m)		3	3	3

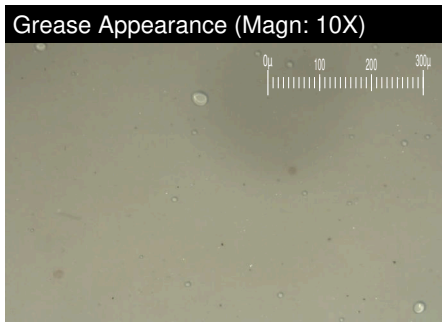
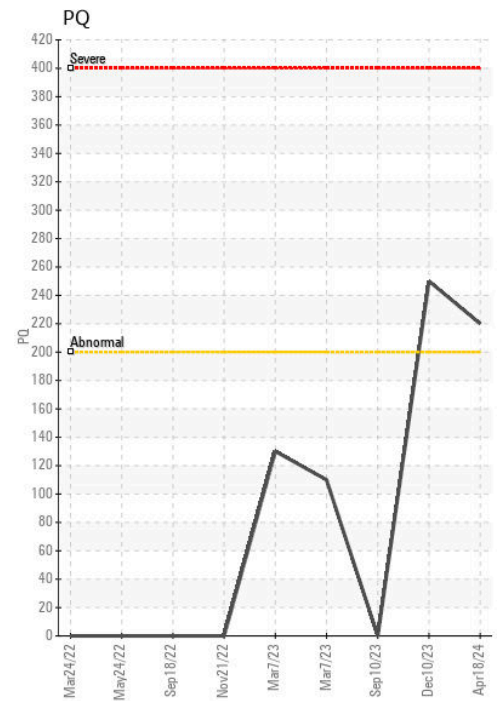
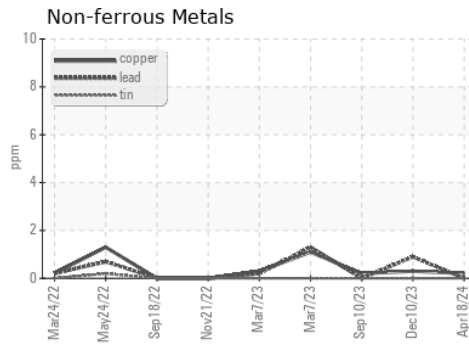
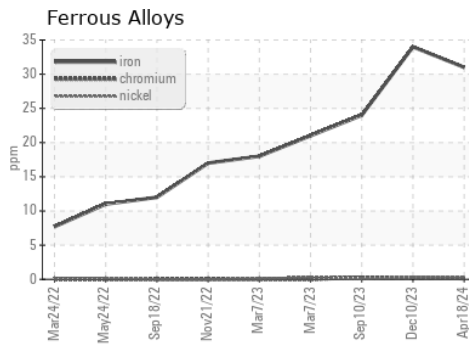
GREASE CONDITION		method	limit/base	current	history1	history2
Grease Color	Visual*	Tan/Beige		Tan	Tan	Grey
Texture	In-house*			Buttery	Buttery	Buttery
NLGI Consistency	NLGI Scale	SKF Method*	2	2	2-3	2

GREASE ANALYSIS



SAMPLE IMAGES	method	limit/base	current	history1	history2
Color					
Bottom					
PrtFilter					

GRAPHS



Laboratory : WearCheck - C8-1175 Appleby Line, Burlington, ON L7L 5H9
Sample No. : PP
Lab Number : 02630415
Unique Number : 5763547
Test Package : GRS 1 (Additional Tests: BottomAnalysis)

HIBERNIA MGMT & DEVELOPMENT CO. LTD
 SUITE 1000,, 100 NEW GOWER STREET
 ST.JOHNNS, NL
 CA A1C 6K3
 Contact: Sam Nash
 samantha.m.nash@exxonmobil.com

To discuss this sample report, contact Customer Service at 1-800-268-2131.
 Test denoted (*) outside scope of accreditation, (m) method modified, (e) tested at external lab.
 Validity of results and interpretation are based on the sample and information as supplied.

T:
 F: (709)722-3766