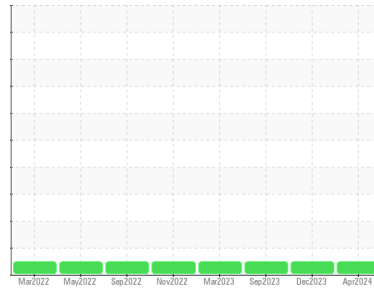




# GREASE ANALYSIS

### Sample Rating Trend



**NORMAL**



Area  
**WEST CRANE**  
 Machine Id  
**170832 GREASE 90 EAST**  
 Component  
**Grease**  
 Fluid  
**IRVING LUBEX SYN 2 46 (--- GAL)**

### DIAGNOSIS

#### Recommendation

Resample at the next service interval to monitor.

#### Wear

All component wear rates are normal.

#### Grease Condition

The condition of the grease is acceptable for the time in service.

#### Contaminants

There is no indication of any contamination in the grease.

### SAMPLE INFORMATION

method	limit/base	current	history1	history2
Sample Number	Client Info	<b>PP</b>	PP	PP
Sample Date	Client Info	<b>18 Apr 2024</b>	10 Dec 2023	10 Sep 2023
Machine Age	hrs Client Info	<b>0</b>	0	0
Grease Age	hrs Client Info	<b>0</b>	0	0
Grease Serviced	Client Info	<b>N/A</b>	N/A	N/A
Sample Status		<b>NORMAL</b>	NORMAL	NORMAL

### CONTAMINATION

method	limit/base	current	history1	history2
Water	WC Method >0.1	<b>NEG</b>	NEG	NEG

### WEAR METALS

method	limit/base	current	history1	history2
PQ	ASTM D8184* >200	<b>1010</b>	380	190
Iron	ppm ASTM D5185(m) >250	<b>43</b>	26	21
Chromium	ppm ASTM D5185(m) >10	<b>&lt;1</b>	<1	<1
Nickel	ppm ASTM D5185(m) >5	<b>&lt;1</b>	<1	<1
Cadmium	ppm ASTM D5185(m)	<b>0</b>	0	0
Titanium	ppm ASTM D5185(m)	<b>0</b>	0	0
Vanadium	ppm ASTM D5185(m)	<b>0</b>	0	0
Lead	ppm ASTM D5185(m) >25	<b>0</b>	<1	0
Copper	ppm ASTM D5185(m) >75	<b>&lt;1</b>	<1	<1
Tin	ppm ASTM D5185(m) >5	<b>0</b>	0	0
Silver	ppm ASTM D5185(m) >5	<b>0</b>	<1	0

### ADDITIVES

method	limit/base	current	history1	history2
Boron	ppm ASTM D5185(m)	<b>10</b>	10	6
Magnesium	ppm ASTM D5185(m)	<b>24</b>	14	12
Manganese	ppm ASTM D5185(m)	<b>&lt;1</b>	0	<1
Molybdenum	ppm ASTM D5185(m)	<b>0</b>	0	0
Phosphorus	ppm ASTM D5185(m)	<b>204</b>	140	129
Zinc	ppm ASTM D5185(m)	<b>182</b>	205	122
Antimony	ppm ASTM D5185(m)	<b>0</b>	0	0

### THICKENER/SOAP

method	limit/base	current	history1	history2
Aluminum	ppm ASTM D5185(m)	<b>6</b>	6	4
Barium	ppm ASTM D5185(m)	<b>&lt;1</b>	<1	<1
Calcium	ppm ASTM D5185(m)	<b>4492</b>	2589	2286
Sodium	ppm ASTM D5185(m)	<b>41</b>	30	17
Lithium	ppm ASTM D5185(m)	<b>121</b>	157	81
Sulfur	ppm ASTM D5185(m)	<b>963</b>	949	667

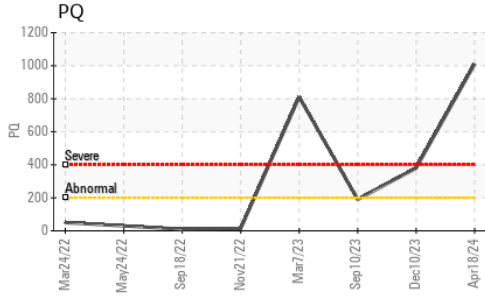
### CONTAMINANTS

method	limit/base	current	history1	history2
Silicon	ppm ASTM D5185(m) >150	<b>11</b>	12	6
Potassium	ppm ASTM D5185(m)	<b>3</b>	<1	1

### GREASE CONDITION

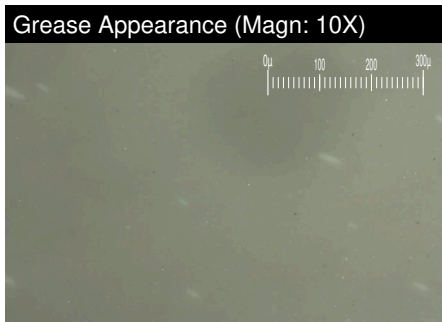
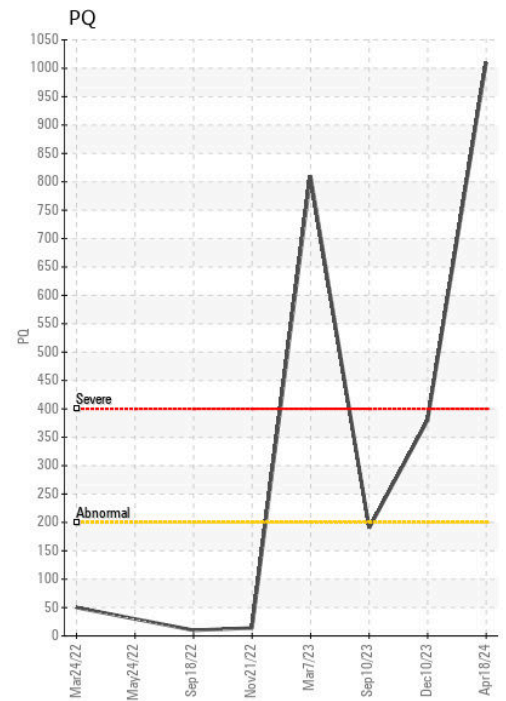
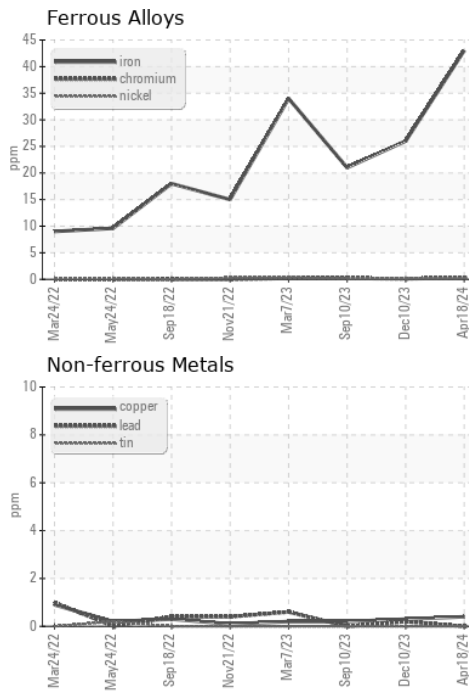
method	limit/base	current	history1	history2
Grease Color	Visual* Tan/Beige	<b>Tan</b>	Tan	Grey
Texture	In-house*	<b>Buttery</b>	Buttery	Buttery
NLGI Consistency	NLGI Scale SKF Method* 2	<b>2</b>	2	1-2

# GREASE ANALYSIS



SAMPLE IMAGES	method	limit/base	current	history1	history2
Color					
Bottom					
PrtFilter					

## GRAPHS



**CALA**  
ISO 17025:2017  
 Accredited  
 Laboratory

**Laboratory** : WearCheck - C8-1175 Appleby Line, Burlington, ON L7L 5H9  
**Sample No.** : PP  
**Lab Number** : 02630419  
**Unique Number** : 5763551  
**Test Package** : GRS 1 ( Additional Tests: BottomAnalysis )

**HIBERNIA MGMT & DEVELOPMENT CO. LTD**  
 SUITE 1000,, 100 NEW GOWER STREET  
 ST.JOHNS, NL  
 CA A1C 6K3  
 Contact: Sam Nash  
 samantha.m.nash@exxonmobil.com

To discuss this sample report, contact Customer Service at 1-800-268-2131.  
 Test denoted (\*) outside scope of accreditation, (m) method modified, (e) tested at external lab.  
 Validity of results and interpretation are based on the sample and information as supplied.

T:  
 F: (709)722-3766