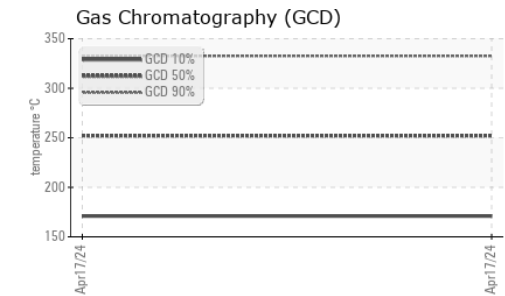
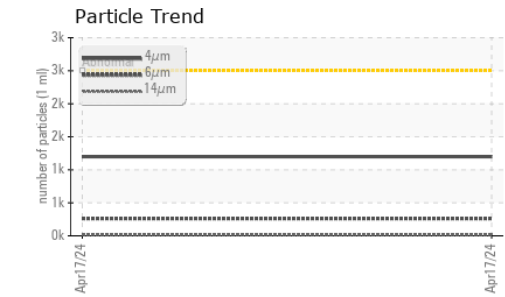
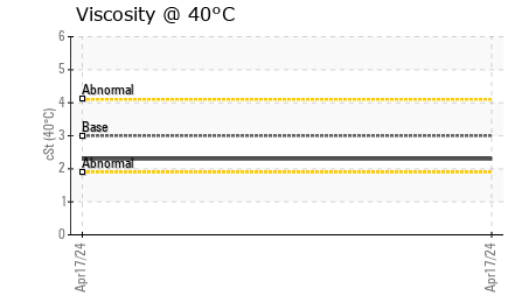
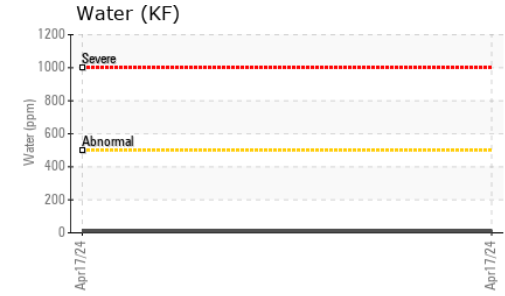
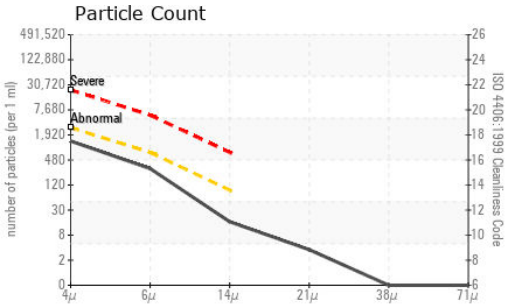




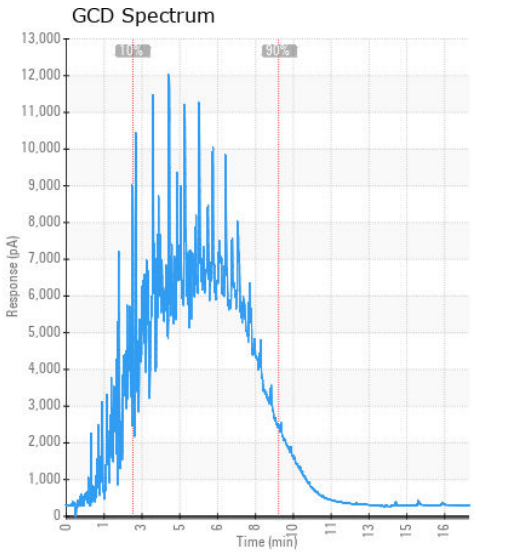
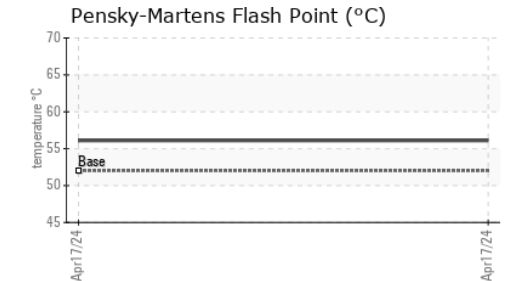
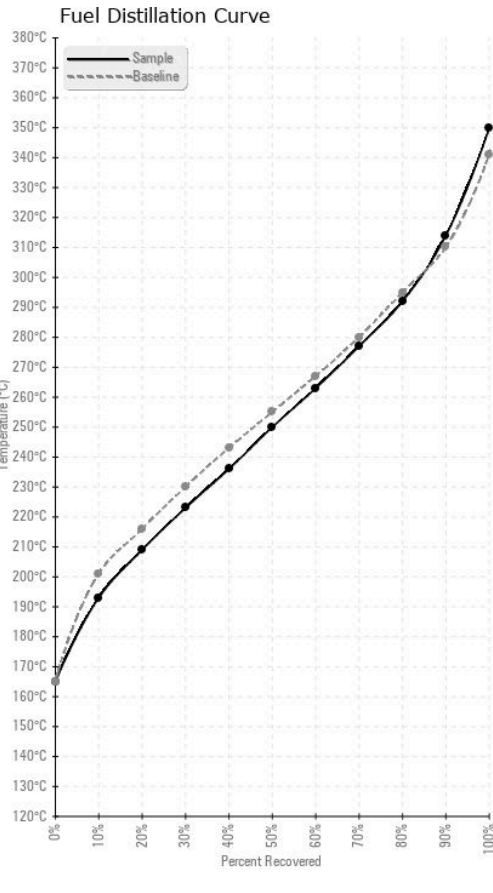
FUEL REPORT



HEAVY METALS	method	limit/base	current	history1	history2	
Aluminum	ppm	ASTM D5185(m)	<0.1	0	---	---
Nickel	ppm	ASTM D5185(m)	<0.1	0	---	---
Lead	ppm	ASTM D5185(m)	<0.1	0	---	---
Vanadium	ppm	ASTM D5185(m)	<0.1	0	---	---
Iron	ppm	ASTM D5185(m)	<0.1	0	---	---
Calcium	ppm	ASTM D5185(m)	<0.1	0	---	---
Magnesium	ppm	ASTM D5185(m)	<0.1	0	---	---
Phosphorus	ppm	ASTM D5185(m)	<0.1	0	---	---
Zinc	ppm	ASTM D5185(m)	<0.1	0	---	---

SAMPLE IMAGES	method	limit/base	current	history1	history2
Color				no image	no image
Bottom				no image	no image

GRAPHS



Laboratory : WearCheck - C8-1175 Appleby Line, Burlington, ON L7L 5H9
Sample No. : PP0659912 **Received** : 22 Apr 2024
Lab Number : 02630807 **Tested** : 25 Apr 2024
Unique Number : 5763939 **Diagnosed** : 25 Apr 2024 - Kevin Marson
Test Package : FUEL (Additional Tests: CC Flash, PrtCount)

STRONGCO EQUIPMENT
 655 MOUNTDALE AVENUE
 THUNDER BAY, ON
 CA P7E 6E5
 Contact: Jean-Luc Antier
 jantier@strongco.com
 T: (807)475-3052
 F: (807)473-0921

To discuss this sample report, contact Customer Service at 1-800-268-2131.
 Test denoted (*) outside scope of accreditation, (m) method modified, (e) tested at external lab.
 Validity of results and interpretation are based on the sample and information as supplied.