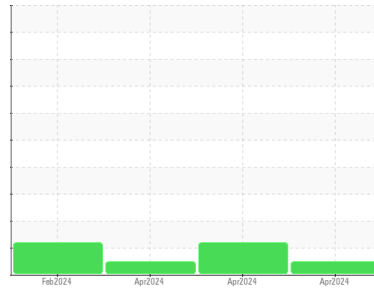




# CLEANLINESS TEST REPORT

Part Number  
**AT553677**  
 Component  
**Hose Assembly**  
 Fluid  
**KEROSENE (350 mL)**

## Sample Rating Trend



**NORMAL**



## DIAGNOSIS

### Recommendation

This is a baseline read-out on the submitted sample. The hose or hose assembly fluid sample for analysis was collected in accordance with ISO/TS 18409 : Hydraulic fluid power - Methods of collecting a fluid sample for analysing the cleanliness of a hose or hose assembly.

### Contamination

The system cleanliness is acceptable for your target ISO 4406 cleanliness code. Cleanliness as per JDS-G169 Fluid Cleanliness Class 5.4 (ISO 4406 --/20/15).

## SAMPLE INFORMATION

method	limit/base	current	history1	history2
Sample Number	Client Info	<b>PH</b>	PH	PH
Sample Date	Client Info	<b>21 Apr 2024</b>	15 Apr 2024	01 Apr 2024
Machine Age	hrs	<b>0</b>	0	0
Oil Age	hrs	<b>0</b>	0	0
Oil Changed	Client Info	<b>N/A</b>	N/A	N/A
Sample Status		<b>NORMAL</b>	ABNORMAL	NORMAL

## CONTAMINATION

method	limit/base	current	history1	history2
Water	WC Method	<b>NEG</b>	NEG	NEG

## FLUID CLEANLINESS

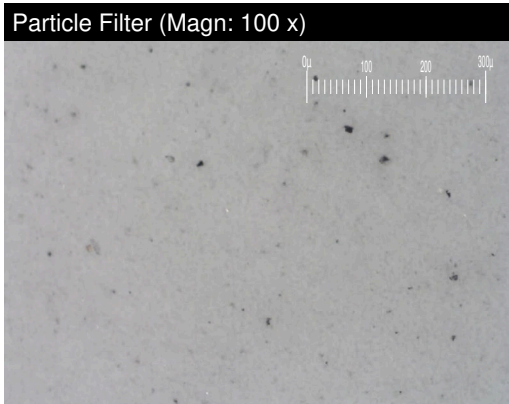
method	limit/base	current	history1	history2
Particles >4µm	ASTM D7647	<b>7214</b>	49405	5785
Particles >6µm	ASTM D7647 >10000	<b>1764</b>	▲ 13972	1598
Particles >14µm	ASTM D7647 >320	<b>80</b>	▲ 531	86
Particles >21µm	ASTM D7647 >80	<b>20</b>	97	20
Particles >38µm	ASTM D7647 >20	<b>1</b>	4	1
Particles >71µm	ASTM D7647 >4	<b>0</b>	0	0
Oil Cleanliness	ISO 4406 (c) >--/20/15	<b>20/18/13</b>	▲ 23/21/16	20/18/14

## VISUAL

method	limit/base	current	history1	history2
White Metal	scalar Visual*	<b>NONE</b>	NONE	NONE
Yellow Metal	scalar Visual*	<b>NONE</b>	NONE	NONE
Precipitate	scalar Visual*	<b>NONE</b>	NONE	NONE
Silt	scalar Visual*	<b>NONE</b>	NONE	NONE
Debris	scalar Visual*	<b>NONE</b>	NONE	NONE
Sand/Dirt	scalar Visual*	<b>NONE</b>	NONE	NONE
Appearance	scalar Visual*	<b>NORML</b>	NORML	NORML
Odor	scalar Visual*	<b>NORML</b>	NORML	NORML

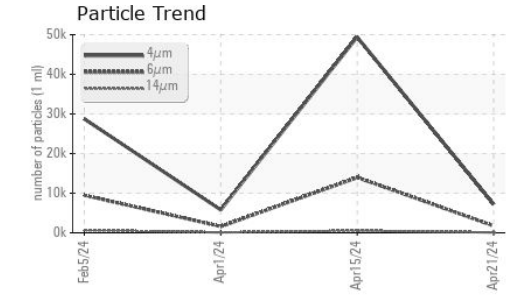
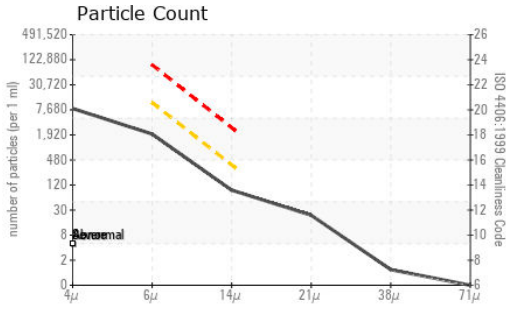
## SAMPLE IMAGES

method	limit/base	current	history1	history2
Color				
Bottom				
PrtFilter				

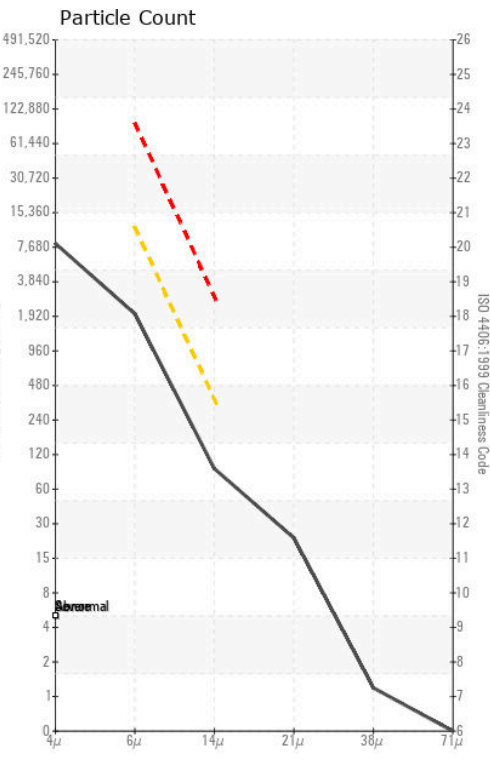




# CLEANLINESS TEST REPORT



## GRAPHS



**Laboratory** : WearCheck - C8-1175 Appleby Line, Burlington, ON L7L 5H9  
**Sample No.** : PH  
**Lab Number** : 02630833  
**Unique Number** : 5763965  
**Test Package** : TEST ( Additional Tests: PrtCount, PrtFilter, PrtFilterPic )  
**Received** : 22 Apr 2024  
**Tested** : 22 Apr 2024  
**Diagnosed** : 22 Apr 2024 - Kevin Marson

**PARKER HANNIFIN CANADA**  
 160 CHISHOLM DRIVE  
 MILTON, ON  
 CA L9T 3G9  
 Contact: Tom Raznatovic  
 tomlav.raznatovic@parker.com

To discuss this sample report, contact Customer Service at 1-800-268-2131.  
 Test denoted (\*) outside scope of accreditation, (m) method modified, (e) tested at external lab.  
 Validity of results and interpretation are based on the sample and information as supplied.