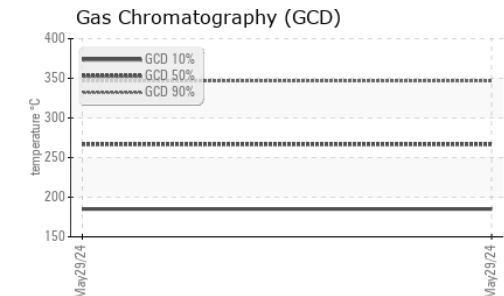
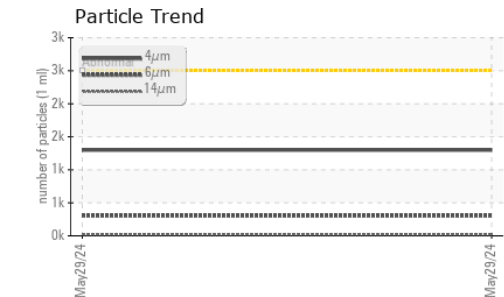
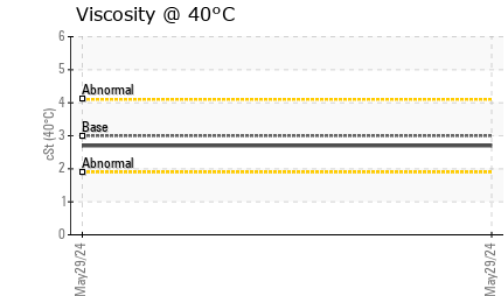
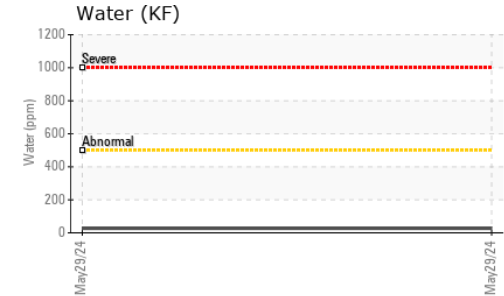
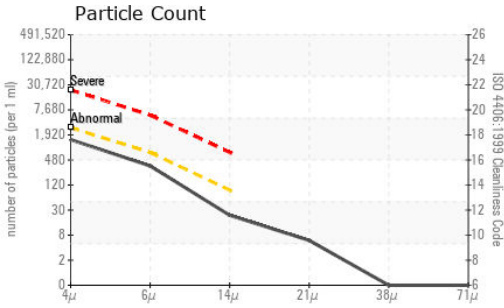




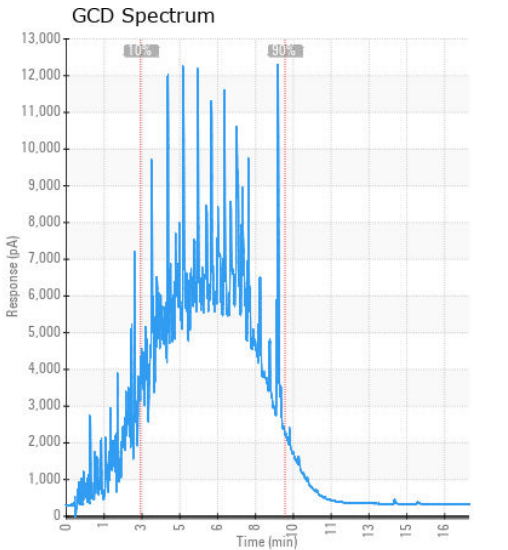
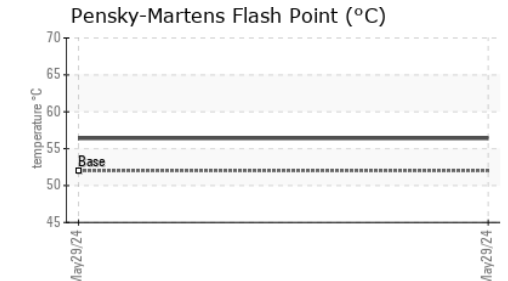
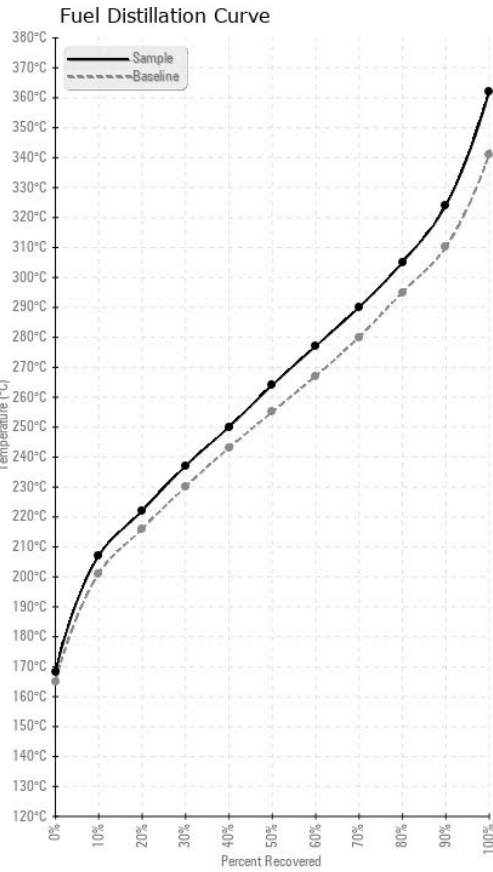
FUEL REPORT



HEAVY METALS	method	limit/base	current	history1	history2
Aluminum	ppm	ASTM D5185(m)	<0.1	0	---
Nickel	ppm	ASTM D5185(m)	<0.1	0	---
Lead	ppm	ASTM D5185(m)	<0.1	<1	---
Vanadium	ppm	ASTM D5185(m)	<0.1	0	---
Iron	ppm	ASTM D5185(m)	<0.1	0	---
Calcium	ppm	ASTM D5185(m)	<0.1	0	---
Magnesium	ppm	ASTM D5185(m)	<0.1	0	---
Phosphorus	ppm	ASTM D5185(m)	<0.1	0	---
Zinc	ppm	ASTM D5185(m)	<0.1	<1	---

SAMPLE IMAGES	method	limit/base	current	history1	history2
Color				no image	no image
Bottom				no image	no image

GRAPHS



Laboratory : WearCheck - C8-1175 Appleby Line, Burlington, ON L7L 5H9 **CUMMINS CANADA ULC - GENERATOR DIVISION**
Sample No. : CU0023821 **Received** : 10 Jun 2024 **7175 PACIFIC CIRCLE**
Lab Number : 02640908 **Tested** : 12 Jun 2024 **MISSISSAUGA, ON**
Unique Number : 5798447 **Diagnosed** : 12 Jun 2024 - Kevin Marson **CA L5T 2A5**
Test Package : FUEL (Additional Tests: CC Flash, PrtCount) **Contact: Elisia Johnson**
To discuss this sample report, contact Customer Service at 1-800-268-2131. **elisia.johnson@cummins.com**
Test denoted (*) outside scope of accreditation, (m) method modified, (e) tested at external lab. **T: (905)795-0050**
Validity of results and interpretation are based on the sample and information as supplied. **F: (905)795-9252**