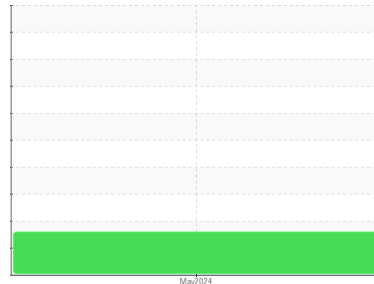




FUEL REPORT

Sample Rating Trend



ISO



Area
COMPASS DATA [154370]

Machine Id
1D
Component
Diesel Fuel
Fluid

No.2 DIESEL FUEL (ULTRALOW SULPHUR) (--- GAL)

DIAGNOSIS

▲ Recommendation

Laboratory test indicate that this fuel is suitable for use and meets all test requirements. We advise that you filter this fluid before use. We recommend you service the filters on this component. We recommend an early resample to monitor this condition.

▲ Contaminants

There is a moderate amount of silt (particulates < 14 microns in size) present in the fuel. The water content is negligible.

Fuel Condition

All laboratory tests indicate that this sample meets specifications for No.2 ultra-low-sulfur diesel fuel (US EPA/CGSB-3.517-3 type B). The fuel is still serviceable provided that the contaminant(s) can be reduced to acceptable levels.

SAMPLE INFORMATION		method	limit/base	current	history1	history2
Sample Number	Client Info			CU0023823	---	---
Sample Date	Client Info			17 May 2024	---	---
Machine Age	hrs	Client Info		83	---	---
Sample Status				ABNORMAL	---	---

PHYSICAL PROPERTIES		method	limit/base	current	history1	history2
Specific Gravity		ASTM D1298*	0.839	0.847	---	---
Fuel Color	text	Visual Screen*	Yellow	Pink	---	---
Visc @ 40°C	cSt	ASTM D7279(m)	3.0	2.8	---	---
Pensky-Martens Flash Point	°C	ASTM D7215*	52	57.6	---	---

SULFUR CONTENT		method	limit/base	current	history1	history2
Sulfur	ppm	ASTM D5185(m)	10	6	---	---

DISTILLATION		method	limit/base	current	history1	history2
Initial Boiling Point	°C	ASTM D2887*	165	169	---	---
5% Distillation Point	°C	ASTM D2887*		199	---	---
10% Distill Point	°C	ASTM D2887*	201	210	---	---
15% Distillation Point	°C	ASTM D2887*		218	---	---
20% Distill Point	°C	ASTM D2887*	216	225	---	---
30% Distill Point	°C	ASTM D2887*	230	240	---	---
40% Distill Point	°C	ASTM D2887*	243	253	---	---
50% Distill Point	°C	ASTM D2887*	255	267	---	---
60% Distill Point	°C	ASTM D2887*	267	280	---	---
70% Distill Point	°C	ASTM D2887*	280	293	---	---
80% Distill Point	°C	ASTM D2887*	295	308	---	---
85% Distillation Point	°C	ASTM D2887*		318	---	---
90% Distill Point	°C	ASTM D2887*	310	327	---	---
95% Distillation Point	°C	ASTM D2887*		341	---	---
Final Boiling Point	°C	ASTM D2887*	341	366	---	---

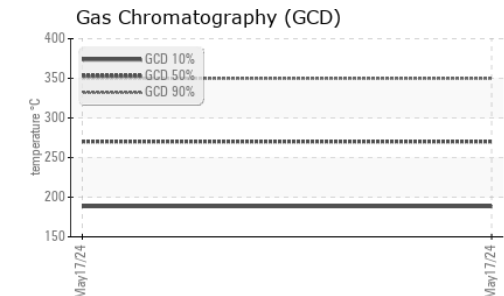
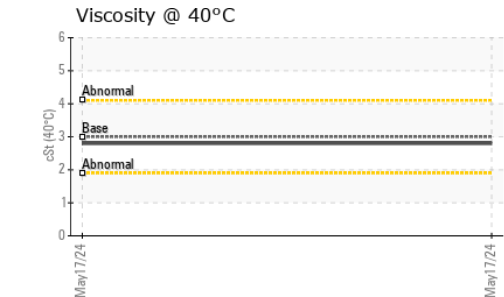
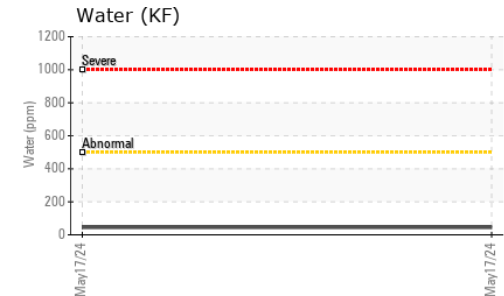
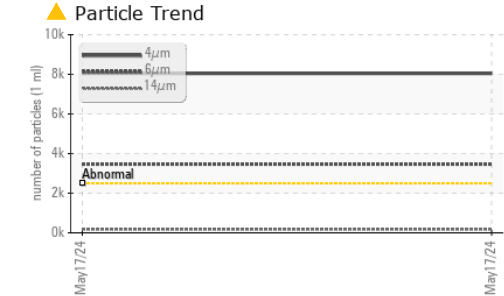
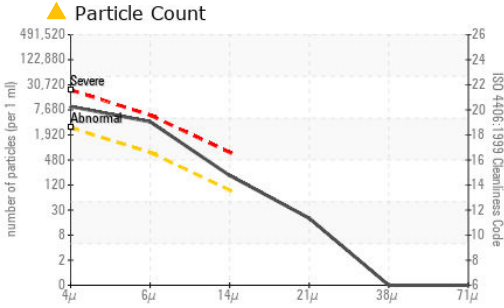
IGNITION QUALITY		method	limit/base	current	history1	history2
API Gravity		ASTM D1298*	37.7	35	---	---
Cetane Index		ASTM D4737*	<40.0	47	---	---

CONTAMINANTS		method	limit/base	current	history1	history2
Silicon	ppm	ASTM D5185(m)	<1.0	1	---	---
Sodium	ppm	ASTM D5185(m)	<0.1	<1	---	---
Potassium	ppm	ASTM D5185(m)	<0.1	0	---	---
Water	%	ASTM D6304*	<0.05	0.004	---	---
ppm Water	ppm	ASTM D6304*	<500	45	---	---

FLUID CLEANLINESS		method	limit/base	current	history1	history2
Particles >4µm		ASTM D7647	>2500	▲ 8044	---	---
Particles >6µm		ASTM D7647	>640	▲ 3467	---	---
Particles >14µm		ASTM D7647	>80	▲ 179	---	---
Particles >21µm		ASTM D7647	>20	17	---	---
Particles >38µm		ASTM D7647	>4	0	---	---
Particles >71µm		ASTM D7647	>3	0	---	---
Oil Cleanliness		ISO 4406 (c)	>18/16/13	▲ 20/19/15	---	---



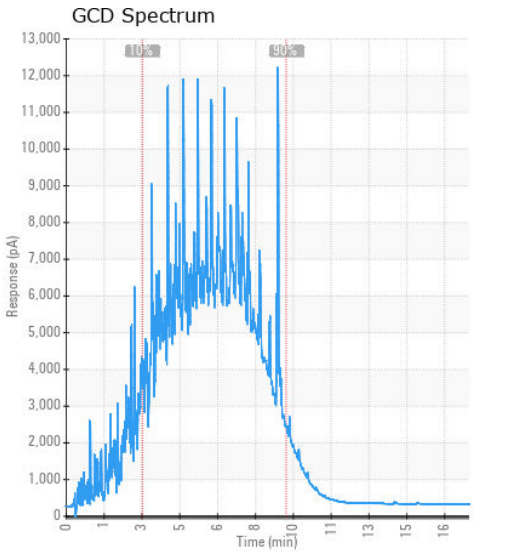
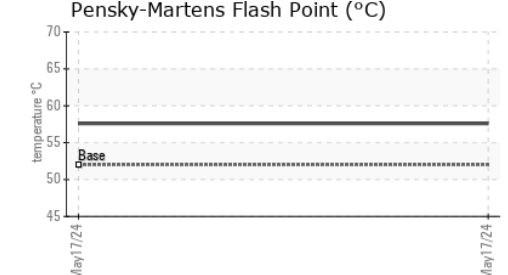
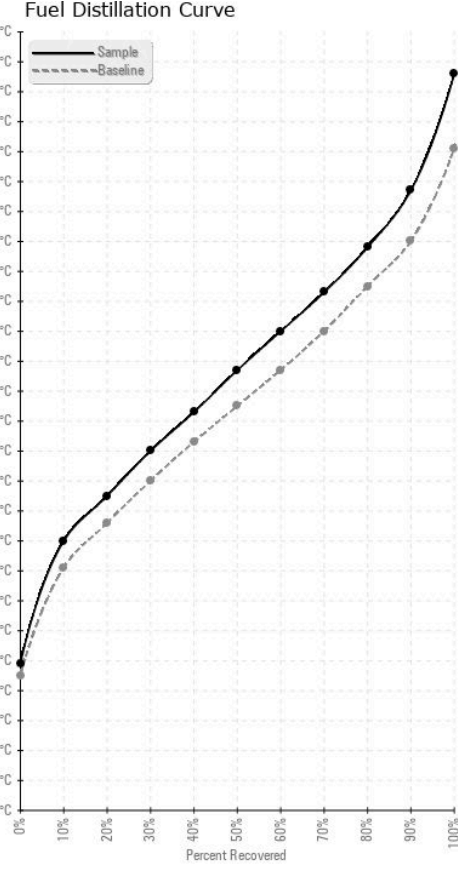
FUEL REPORT



HEAVY METALS	method	limit/base	current	history1	history2	
Aluminum	ppm	ASTM D5185(m)	<0.1	0	---	---
Nickel	ppm	ASTM D5185(m)	<0.1	0	---	---
Lead	ppm	ASTM D5185(m)	<0.1	<1	---	---
Vanadium	ppm	ASTM D5185(m)	<0.1	0	---	---
Iron	ppm	ASTM D5185(m)	<0.1	0	---	---
Calcium	ppm	ASTM D5185(m)	<0.1	0	---	---
Magnesium	ppm	ASTM D5185(m)	<0.1	0	---	---
Phosphorus	ppm	ASTM D5185(m)	<0.1	0	---	---
Zinc	ppm	ASTM D5185(m)	<0.1	0	---	---

SAMPLE IMAGES	method	limit/base	current	history1	history2
Color				no image	no image
Bottom				no image	no image

GRAPHS



Laboratory : WearCheck - C8-1175 Appleby Line, Burlington, ON L7L 5H9
Sample No. : CU0023823
Lab Number : 02640911
Unique Number : 5798450
Test Package : FUEL (Additional Tests: CC Flash, PrtCount)

CUMMINS CANADA ULC - GENERATOR DIVISION
 7175 PACIFIC CIRCLE
 MISSISSAUGA, ON
 CA L5T 2A5

To discuss this sample report, contact Customer Service at 1-800-268-2131.
 Test denoted (*) outside scope of accreditation, (m) method modified, (e) tested at external lab.
 Validity of results and interpretation are based on the sample and information as supplied.

Contact: Zaneef Abboobakar
 zaneef.abboobakar@cummins.com
 T:
 F: (905)795-0035