



FUEL REPORT

Sample Rating Trend



ISO



Area
COMPASS [154352]

Machine Id
3F
Component
Diesel Fuel

Fluid
No.2 DIESEL FUEL (ULTRALOW SULPHUR) (--- GAL)

DIAGNOSIS

Recommendation

Laboratory test indicate that this fuel is suitable for use and meets all test requirements. We advise that you filter this fluid before use. We recommend you service the filters on this component. Resample at the next service interval to monitor.

Contaminants

There is a light amount of silt (particulates < 14 microns in size) present in the fuel. The water content is negligible.

Fuel Condition

All laboratory tests indicate that this sample meets specifications for No.2 ultra-low-sulfur diesel fuel (US EPA/CGSB-3.517-3 type B).

SAMPLE INFORMATION		method	limit/base	current	history1	history2
Sample Number	Client Info			CU0022896	---	---
Sample Date	Client Info			30 May 2024	---	---
Machine Age	hrs	Client Info		73	---	---
Sample Status				ATTENTION	---	---

PHYSICAL PROPERTIES		method	limit/base	current	history1	history2
Specific Gravity		ASTM D1298*	0.839	0.843	---	---
Fuel Color	text	Visual Screen*	Yellow	Pink	---	---
Visc @ 40°C	cSt	ASTM D7279(m)	3.0	2.7	---	---
Pensky-Martens Flash Point	°C	ASTM D7215*	52	57	---	---

SULFUR CONTENT		method	limit/base	current	history1	history2
Sulfur	ppm	ASTM D5185(m)	10	7	---	---

DISTILLATION		method	limit/base	current	history1	history2
Initial Boiling Point	°C	ASTM D2887*	165	169	---	---
5% Distillation Point	°C	ASTM D2887*		197	---	---
10% Distill Point	°C	ASTM D2887*	201	208	---	---
15% Distillation Point	°C	ASTM D2887*		216	---	---
20% Distill Point	°C	ASTM D2887*	216	224	---	---
30% Distill Point	°C	ASTM D2887*	230	239	---	---
40% Distill Point	°C	ASTM D2887*	243	252	---	---
50% Distill Point	°C	ASTM D2887*	255	265	---	---
60% Distill Point	°C	ASTM D2887*	267	279	---	---
70% Distill Point	°C	ASTM D2887*	280	292	---	---
80% Distill Point	°C	ASTM D2887*	295	307	---	---
85% Distillation Point	°C	ASTM D2887*		316	---	---
90% Distill Point	°C	ASTM D2887*	310	326	---	---
95% Distillation Point	°C	ASTM D2887*		341	---	---
Final Boiling Point	°C	ASTM D2887*	341	370	---	---

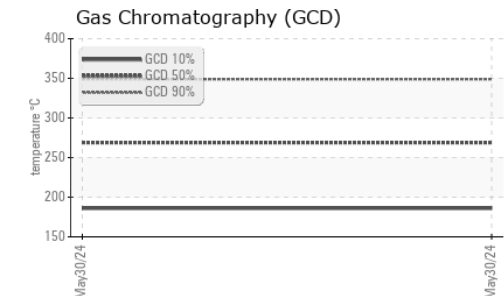
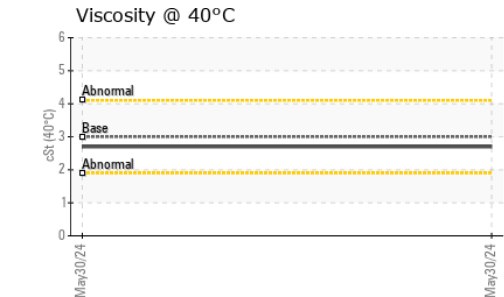
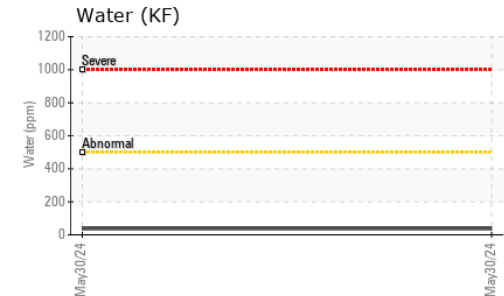
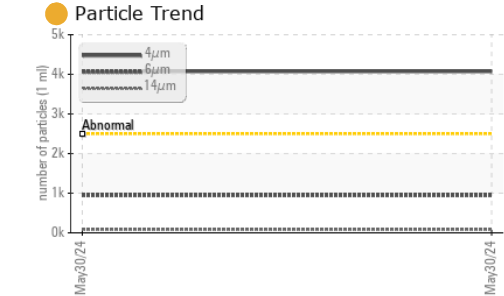
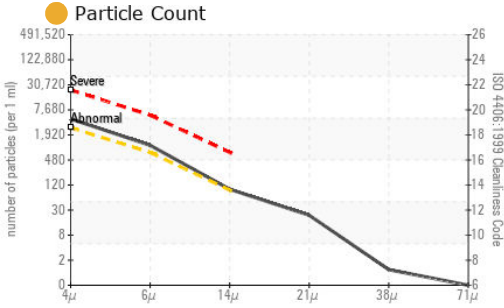
IGNITION QUALITY		method	limit/base	current	history1	history2
API Gravity		ASTM D1298*	37.7	36	---	---
Cetane Index		ASTM D4737*	<40.0	48	---	---

CONTAMINANTS		method	limit/base	current	history1	history2
Silicon	ppm	ASTM D5185(m)	<1.0	0	---	---
Sodium	ppm	ASTM D5185(m)	<0.1	<1	---	---
Potassium	ppm	ASTM D5185(m)	<0.1	0	---	---
Water	%	ASTM D6304*	<0.05	0.003	---	---
ppm Water	ppm	ASTM D6304*	<500	37	---	---

FLUID CLEANLINESS		method	limit/base	current	history1	history2
Particles >4µm		ASTM D7647	>2500	4073	---	---
Particles >6µm		ASTM D7647	>640	946	---	---
Particles >14µm		ASTM D7647	>80	84	---	---
Particles >21µm		ASTM D7647	>20	20	---	---
Particles >38µm		ASTM D7647	>4	1	---	---
Particles >71µm		ASTM D7647	>3	0	---	---
Oil Cleanliness		ISO 4406 (c)	>18/16/13	19/17/14	---	---



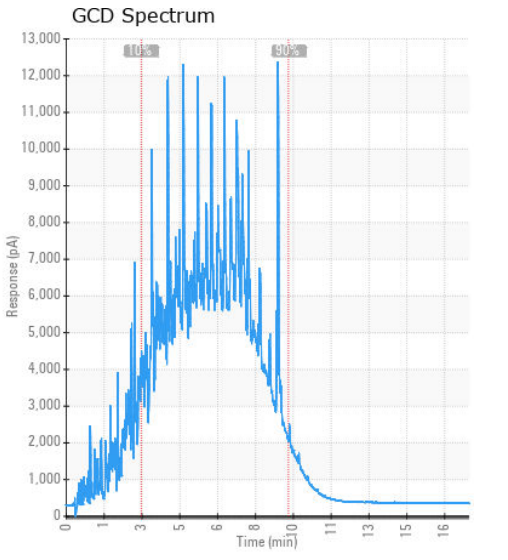
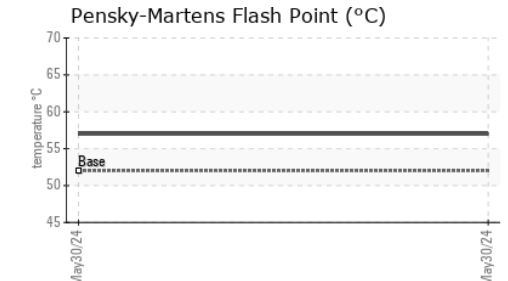
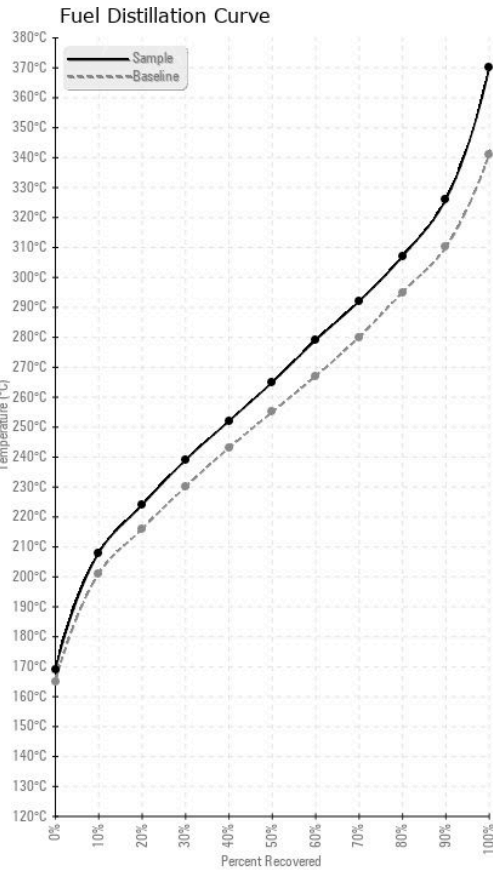
FUEL REPORT



HEAVY METALS	method	limit/base	current	history1	history2
Aluminum	ppm	ASTM D5185(m)	<0.1	0	---
Nickel	ppm	ASTM D5185(m)	<0.1	0	---
Lead	ppm	ASTM D5185(m)	<0.1	<1	---
Vanadium	ppm	ASTM D5185(m)	<0.1	0	---
Iron	ppm	ASTM D5185(m)	<0.1	0	---
Calcium	ppm	ASTM D5185(m)	<0.1	0	---
Magnesium	ppm	ASTM D5185(m)	<0.1	0	---
Phosphorus	ppm	ASTM D5185(m)	<0.1	0	---
Zinc	ppm	ASTM D5185(m)	<0.1	<1	---

SAMPLE IMAGES	method	limit/base	current	history1	history2
Color				no image	no image
Bottom				no image	no image

GRAPHS



Laboratory : WearCheck - C8-1175 Appleby Line, Burlington, ON L7L 5H9 **CUMMINS CANADA ULC - GENERATOR DIVISION**
Sample No. : CU0022896 **Received** : 10 Jun 2024 **7175 PACIFIC CIRCLE**
Lab Number : 02640914 **Tested** : 12 Jun 2024 **MISSISSAUGA, ON**
Unique Number : 5798453 **Diagnosed** : 12 Jun 2024 - Kevin Marson **CA L5T 2A5**
Test Package : FUEL (Additional Tests: CC Flash, PrtCount) **Contact: Elisia Johnson**
To discuss this sample report, contact Customer Service at 1-800-268-2131. **elisia.johnson@cummins.com**
Test denoted (*) outside scope of accreditation, (m) method modified, (e) tested at external lab. **T: (905)795-0050**
Validity of results and interpretation are based on the sample and information as supplied. **F: (905)795-9252**