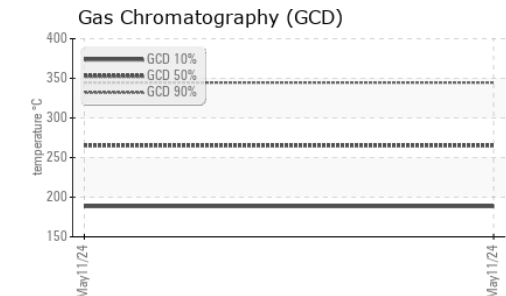
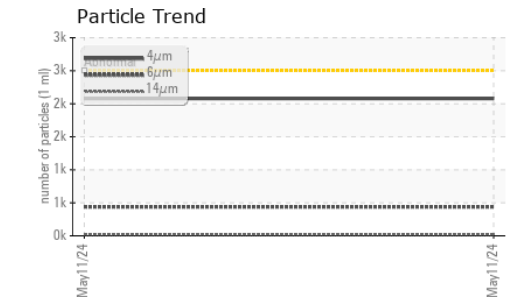
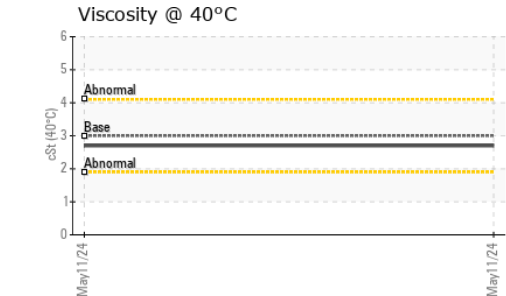
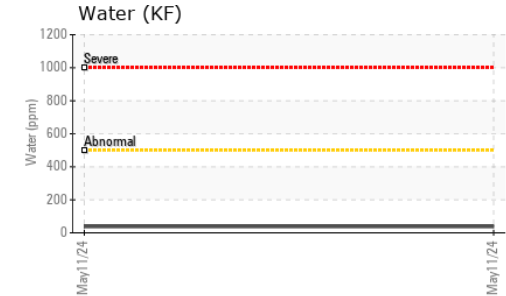
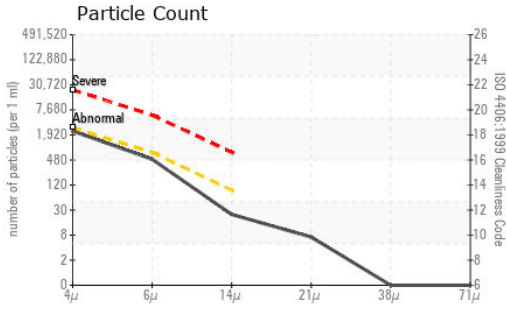






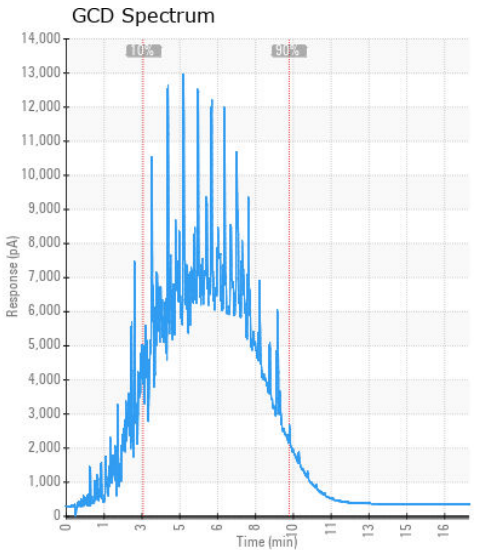
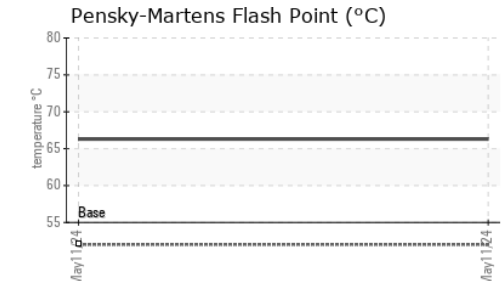
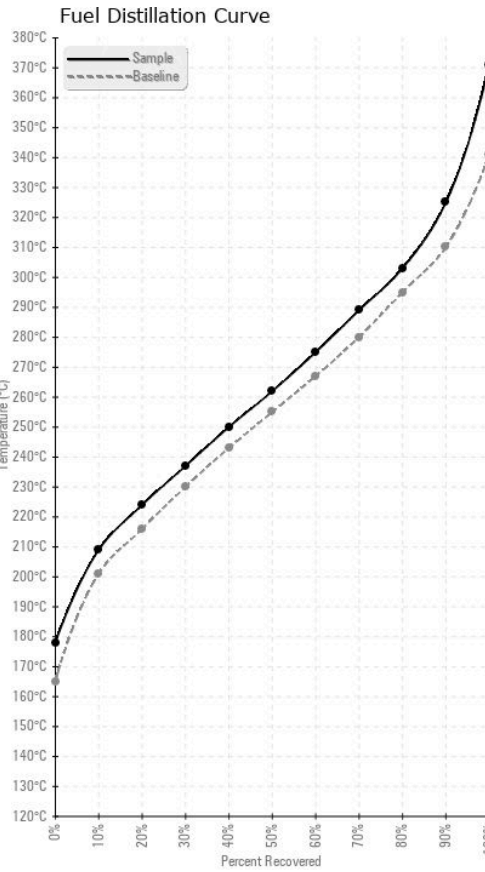
# FUEL REPORT



HEAVY METALS	method	limit/base	current	history1	history2
Aluminum	ppm	ASTM D5185(m)	<0.1	0	---
Nickel	ppm	ASTM D5185(m)	<0.1	0	---
Lead	ppm	ASTM D5185(m)	<0.1	0	---
Vanadium	ppm	ASTM D5185(m)	<0.1	0	---
Iron	ppm	ASTM D5185(m)	<0.1	0	---
Calcium	ppm	ASTM D5185(m)	<0.1	<1	---
Magnesium	ppm	ASTM D5185(m)	<0.1	<1	---
Phosphorus	ppm	ASTM D5185(m)	<0.1	<1	---
Zinc	ppm	ASTM D5185(m)	<0.1	<1	---

SAMPLE IMAGES	method	limit/base	current	history1	history2
Color				no image	no image
Bottom				no image	no image

## GRAPHS



**Laboratory** : WearCheck - C8-1175 Appleby Line, Burlington, ON L7L 5H9 **CUMMINS CANADA ULC - GENERATOR DIVISION**  
**Sample No.** : CU0023350 **Received** : 10 Jun 2024 **7175 PACIFIC CIRCLE**  
**Lab Number** : 02640925 **Tested** : 12 Jun 2024 **MISSISSAUGA, ON**  
**Unique Number** : 5798464 **Diagnosed** : 12 Jun 2024 - Kevin Marson **CA L5T 2A5**  
**Test Package** : FUEL ( Additional Tests: CC Flash, PrtCount ) **Contact: Elisia Johnson**  
**To discuss this sample report, contact Customer Service at 1-800-268-2131.** **elisia.johnson@cummins.com**  
**Test denoted (\*) outside scope of accreditation, (m) method modified, (e) tested at external lab.** **T: (905)795-0050**  
**Validity of results and interpretation are based on the sample and information as supplied.** **F: (905)795-9252**