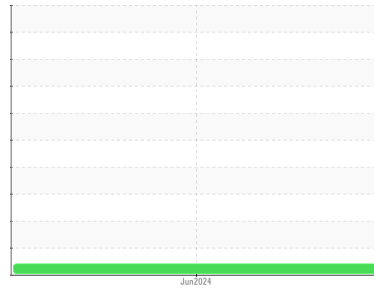


# FUEL REPORT

Sample Rating Trend



**OFF SPEC**



Area  
**UNASSIGNED [6100304461]**

Machine Id  
**TANK DYNO**

Component  
**Diesel Fuel**

Fluid  
**No.2 DIESEL FUEL (ULTRALOW SULPHUR) (--- GAL)**

## DIAGNOSIS

### Recommendation

Nous vous recommandons d'échantillonner de nouveau dès que possible afin de contrôler la situation.

### Contaminants

Le point d'éclair est inférieur à la normale. La propreté du système est acceptable pour votre objectif de propreté ISO 4406. La teneur en eau est négligeable.

### Fuel Condition

Les tests de laboratoire indiquent que cet échantillon ne satisfait PAS aux spécifications pour le carburant diesel à teneur en soufre ultra-faible de No.2 (US EPA / CGSB-3.517-3 type B).

| SAMPLE INFORMATION |             | method      | limit/base | current            | history1 | history2 |
|--------------------|-------------|-------------|------------|--------------------|----------|----------|
| Sample Number      | Client Info |             |            | <b>WA0021133</b>   | ---      | ---      |
| Sample Date        | Client Info |             |            | <b>06 Jun 2024</b> | ---      | ---      |
| Machine Age        | hrs         | Client Info |            | <b>0</b>           | ---      | ---      |
| Sample Status      |             |             |            | <b>ABNORMAL</b>    | ---      | ---      |

| PHYSICAL PROPERTIES        |      | method         | limit/base | current      | history1 | history2 |
|----------------------------|------|----------------|------------|--------------|----------|----------|
| Specific Gravity           |      | ASTM D1298*    | 0.839      | <b>0.833</b> | ---      | ---      |
| Fuel Color                 | text | Visual Screen* | Yllow      | <b>Pink</b>  | ---      | ---      |
| Visc @ 40°C                | cSt  | ASTM D7279(m)  | 3.0        | <b>2</b>     | ---      | ---      |
| Pensky-Martens Flash Point | °C   | ASTM D7215*    | 52         | <b>▲ 46</b>  | ---      | ---      |

| SULFUR CONTENT |     | method        | limit/base | current   | history1 | history2 |
|----------------|-----|---------------|------------|-----------|----------|----------|
| Sulfur         | ppm | ASTM D5185(m) | 10         | <b>13</b> | ---      | ---      |

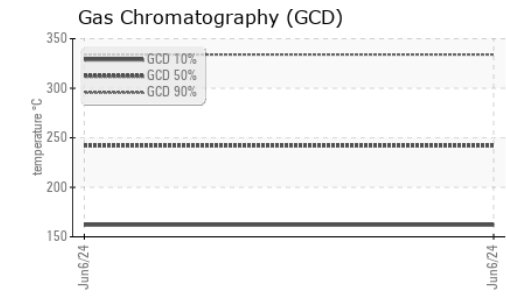
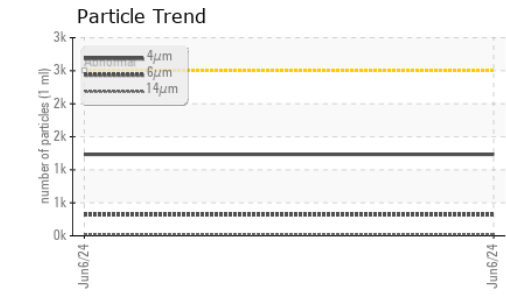
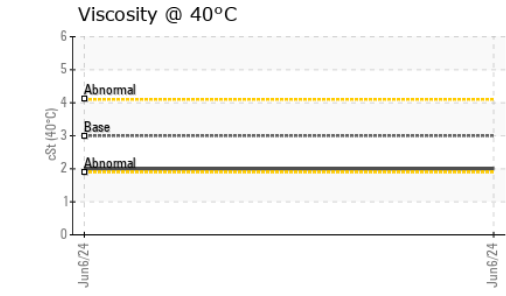
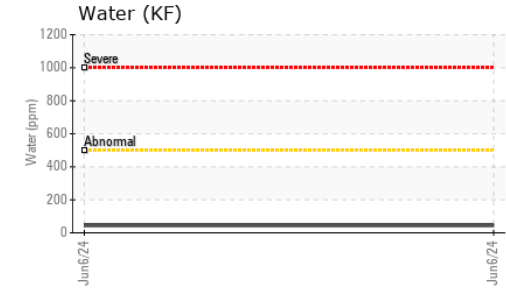
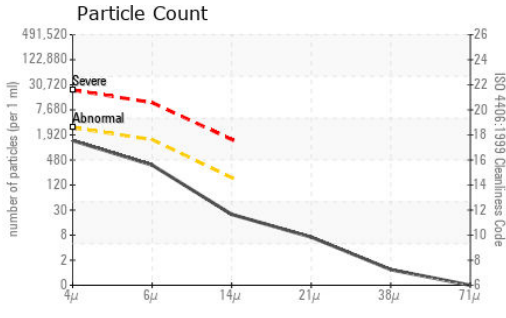
| DISTILLATION           |    | method      | limit/base | current    | history1 | history2 |
|------------------------|----|-------------|------------|------------|----------|----------|
| Initial Boiling Point  | °C | ASTM D2887* | 165        | <b>154</b> | ---      | ---      |
| 5% Distillation Point  | °C | ASTM D2887* |            | <b>174</b> | ---      | ---      |
| 10% Distill Point      | °C | ASTM D2887* | 201        | <b>183</b> | ---      | ---      |
| 15% Distillation Point | °C | ASTM D2887* |            | <b>191</b> | ---      | ---      |
| 20% Distill Point      | °C | ASTM D2887* | 216        | <b>199</b> | ---      | ---      |
| 30% Distill Point      | °C | ASTM D2887* | 230        | <b>213</b> | ---      | ---      |
| 40% Distill Point      | °C | ASTM D2887* | 243        | <b>227</b> | ---      | ---      |
| 50% Distill Point      | °C | ASTM D2887* | 255        | <b>241</b> | ---      | ---      |
| 60% Distill Point      | °C | ASTM D2887* | 267        | <b>256</b> | ---      | ---      |
| 70% Distill Point      | °C | ASTM D2887* | 280        | <b>272</b> | ---      | ---      |
| 80% Distill Point      | °C | ASTM D2887* | 295        | <b>290</b> | ---      | ---      |
| 85% Distillation Point | °C | ASTM D2887* |            | <b>303</b> | ---      | ---      |
| 90% Distill Point      | °C | ASTM D2887* | 310        | <b>315</b> | ---      | ---      |
| 95% Distillation Point | °C | ASTM D2887* |            | <b>337</b> | ---      | ---      |
| Final Boiling Point    | °C | ASTM D2887* | 341        | <b>365</b> | ---      | ---      |

| IGNITION QUALITY |  | method      | limit/base | current   | history1 | history2 |
|------------------|--|-------------|------------|-----------|----------|----------|
| API Gravity      |  | ASTM D1298* | 37.7       | <b>38</b> | ---      | ---      |
| Cetane Index     |  | ASTM D4737* | <40.0      | <b>46</b> | ---      | ---      |

| CONTAMINANTS |     | method        | limit/base | current      | history1 | history2 |
|--------------|-----|---------------|------------|--------------|----------|----------|
| Silicon      | ppm | ASTM D5185(m) | <1.0       | <b>0</b>     | ---      | ---      |
| Sodium       | ppm | ASTM D5185(m) | <0.1       | <b>&lt;1</b> | ---      | ---      |
| Potassium    | ppm | ASTM D5185(m) | <0.1       | <b>0</b>     | ---      | ---      |
| Water        | %   | ASTM D6304*   | <0.05      | <b>0.004</b> | ---      | ---      |
| ppm Water    | ppm | ASTM D6304*   | <500       | <b>44</b>    | ---      | ---      |

| FLUID CLEANLINESS |  | method       | limit/base | current         | history1 | history2 |
|-------------------|--|--------------|------------|-----------------|----------|----------|
| Particles >4µm    |  | ASTM D7647   | >2500      | <b>1233</b>     | ---      | ---      |
| Particles >6µm    |  | ASTM D7647   | >1300      | <b>318</b>      | ---      | ---      |
| Particles >14µm   |  | ASTM D7647   | >160       | <b>21</b>       | ---      | ---      |
| Particles >21µm   |  | ASTM D7647   | >40        | <b>6</b>        | ---      | ---      |
| Particles >38µm   |  | ASTM D7647   | >10        | <b>1</b>        | ---      | ---      |
| Particles >71µm   |  | ASTM D7647   | >3         | <b>0</b>        | ---      | ---      |
| Oil Cleanliness   |  | ISO 4406 (c) | >18/17/14  | <b>17/15/12</b> | ---      | ---      |

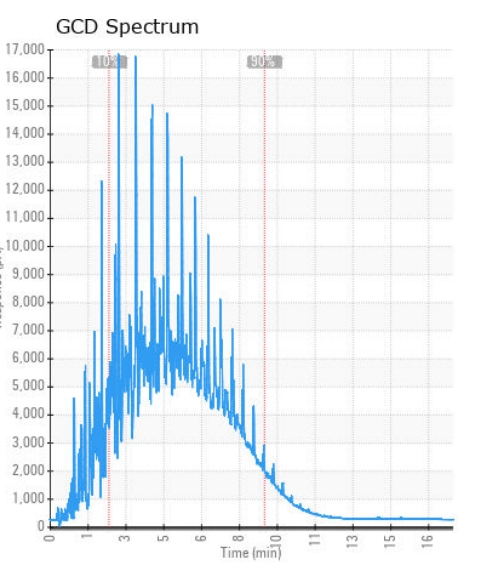
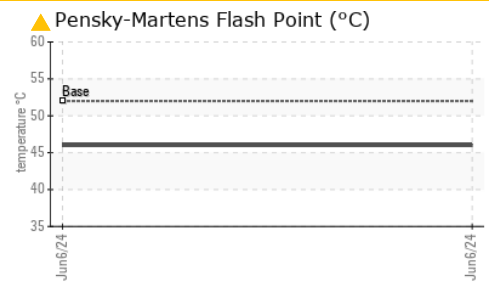
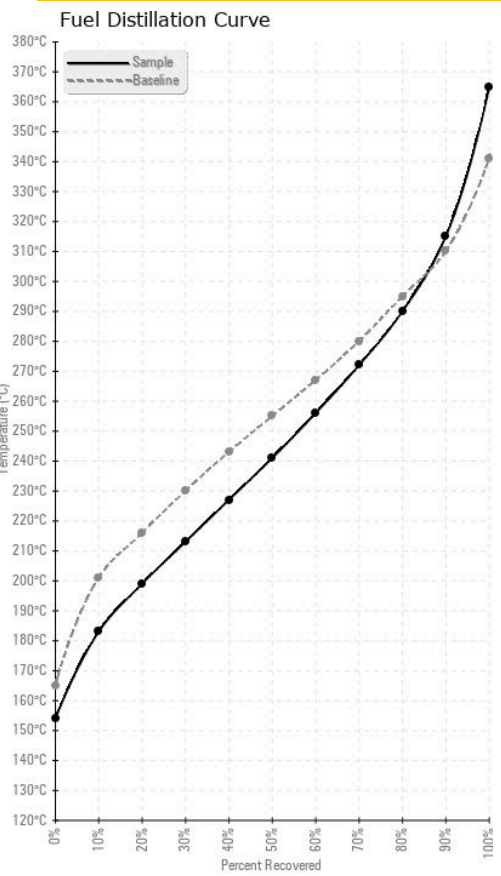
# FUEL REPORT



| HEAVY METALS | method | limit/base    | current | history1 | history2 |
|--------------|--------|---------------|---------|----------|----------|
| Aluminum     | ppm    | ASTM D5185(m) | <0.1    | 0        | ---      |
| Nickel       | ppm    | ASTM D5185(m) | <0.1    | 0        | ---      |
| Lead         | ppm    | ASTM D5185(m) | <0.1    | 0        | ---      |
| Vanadium     | ppm    | ASTM D5185(m) | <0.1    | 0        | ---      |
| Iron         | ppm    | ASTM D5185(m) | <0.1    | 0        | ---      |
| Calcium      | ppm    | ASTM D5185(m) | <0.1    | <1       | ---      |
| Magnesium    | ppm    | ASTM D5185(m) | <0.1    | 0        | ---      |
| Phosphorus   | ppm    | ASTM D5185(m) | <0.1    | <1       | ---      |
| Zinc         | ppm    | ASTM D5185(m) | <0.1    | <1       | ---      |

| SAMPLE IMAGES | method | limit/base | current | history1 | history2 |
|---------------|--------|------------|---------|----------|----------|
| Color         |        |            |         | no image | no image |
| Bottom        |        |            |         | no image | no image |

## GRAPHS



**Laboratory** : WearCheck - C8-1175 Appleby Line, Burlington, ON L7L 5H9  
**Sample No.** : WA0021133 **Received** : 10 Jun 2024  
**Lab Number** : 02640929 **Tested** : 17 Jun 2024  
**Unique Number** : 5798468 **Diagnosed** : 17 Jun 2024 - Kevin Marson  
**Test Package** : FUEL ( Additional Tests: CC Flash, PrtCount )

To discuss this sample report, contact Customer Service at 1-800-268-2131.  
 Test denoted (\*) outside scope of accreditation, (m) method modified, (e) tested at external lab.  
 Validity of results and interpretation are based on the sample and information as supplied.

**Wajax Limited**  
 2997 AV. WATT  
 Quebec, QC  
 CA G1X 3W1  
 Contact: Steve Racine  
 sracine@wajax.com  
 T:  
 F: (418)651-4448