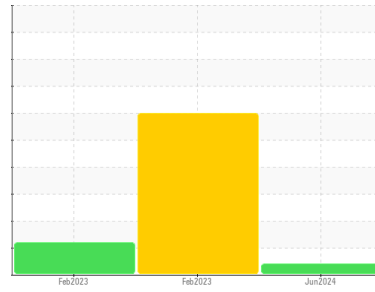




FUEL REPORT

Sample Rating Trend



OFF SPEC



Area
BEANFIELD TECHNOLOGIES

Machine Id
PE4045L127909

Component
Diesel Fuel

Fluid
No.2 DIESEL FUEL (ULTRALOW SULPHUR) (--- GAL)

DIAGNOSIS

Recommendation

Laboratory test indicate that this fuel is suitable for use and meets all test requirements. Resample at the next service interval to monitor.

Contaminants

The system cleanliness is acceptable for your target ISO 4406 cleanliness code. The water content is negligible. There is no indication of any contamination in the diesel fuel.

Fuel Condition

All laboratory tests indicate that this sample meets specifications for No.2 ultra-low-sulfur diesel fuel (US EPA/CGSB-3.517-3 type B).

SAMPLE INFORMATION		method	limit/base	current	history1	history2
Sample Number	Client Info			CU0023357	CU0020833	CU0020934
Sample Date	Client Info			09 Jun 2024	17 Feb 2023	17 Feb 2023
Machine Age	hrs	Client Info		0	6	6
Sample Status				ABNORMAL	SEVERE	ATTENTION

PHYSICAL PROPERTIES		method	limit/base	current	history1	history2
Specific Gravity		ASTM D1298*	0.839	0.849	0.844	0.845
Fuel Color	text	Visual Screen*	Yllow	Yllow	Pink	Orang
Visc @ 40°C	cSt	ASTM D7279(m)	3.0	2.5	2.6	2.6
Pensky-Martens Flash Point	°C	ASTM D7215*	52	64.6	62	63.5

SULFUR CONTENT		method	limit/base	current	history1	history2
Sulfur	ppm	ASTM D5185(m)	10	11	6	8

DISTILLATION		method	limit/base	current	history1	history2
Initial Boiling Point	°C	ASTM D2887*	165	176	174	175
5% Distillation Point	°C	ASTM D2887*		203	198	201
10% Distill Point	°C	ASTM D2887*	201	213	208	212
15% Distillation Point	°C	ASTM D2887*		221	215	220
20% Distill Point	°C	ASTM D2887*	216	229	222	228
30% Distill Point	°C	ASTM D2887*	230	241	235	242
40% Distill Point	°C	ASTM D2887*	243	252	247	253
50% Distill Point	°C	ASTM D2887*	255	262	259	265
60% Distill Point	°C	ASTM D2887*	267	273	272	276
70% Distill Point	°C	ASTM D2887*	280	285	286	287
80% Distill Point	°C	ASTM D2887*	295	297	301	300
85% Distillation Point	°C	ASTM D2887*		307	313	311
90% Distill Point	°C	ASTM D2887*	310	317	325	322
95% Distillation Point	°C	ASTM D2887*		334	346	341
Final Boiling Point	°C	ASTM D2887*	341	▲ 368	373	364

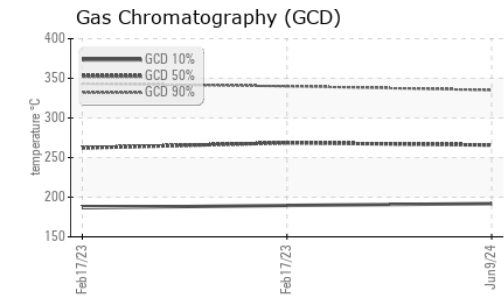
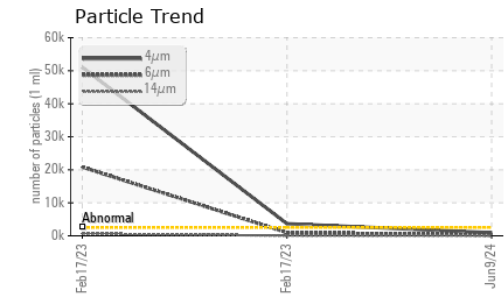
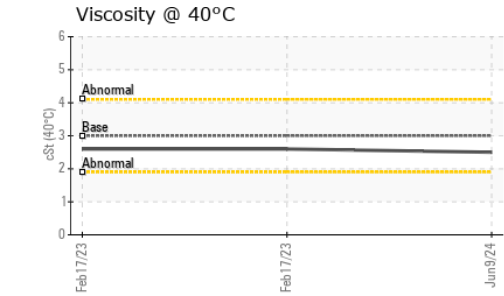
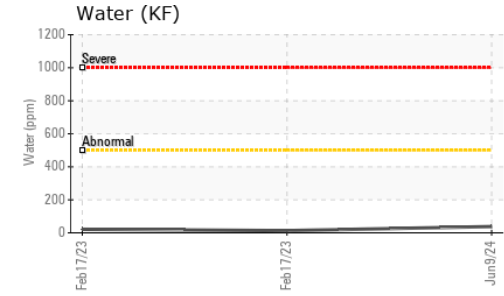
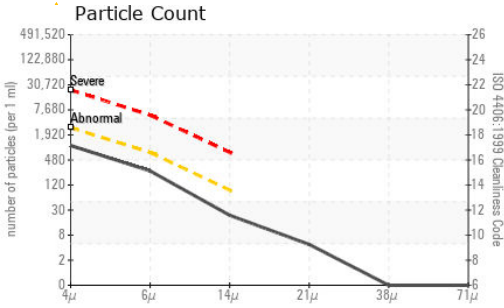
IGNITION QUALITY		method	limit/base	current	history1	history2
API Gravity		ASTM D1298*	37.7	35	36	35
Cetane Index		ASTM D4737*	<40.0	46	47	48

CONTAMINANTS		method	limit/base	current	history1	history2
Silicon	ppm	ASTM D5185(m)	<1.0	0	0	0
Sodium	ppm	ASTM D5185(m)	<0.1	<1	<1	<1
Potassium	ppm	ASTM D5185(m)	<0.1	0	0	0
Water	%	ASTM D6304*	<0.05	0.003	0.001	0.002
ppm Water	ppm	ASTM D6304*	<500	38	13.2	21.4

FLUID CLEANLINESS		method	limit/base	current	history1	history2
Particles >4µm		ASTM D7647	>2500	938	▲ 51055	● 3669
Particles >6µm		ASTM D7647	>640	230	▲ 20827	● 946
Particles >14µm		ASTM D7647	>80	20	▲ 648	● 40
Particles >21µm		ASTM D7647	>20	4	▲ 47	● 7
Particles >38µm		ASTM D7647	>4	0	0	0
Particles >71µm		ASTM D7647	>3	0	0	0
Oil Cleanliness		ISO 4406 (c)	>18/16/13	17/15/11	▲ 23/22/17	● 19/17/12



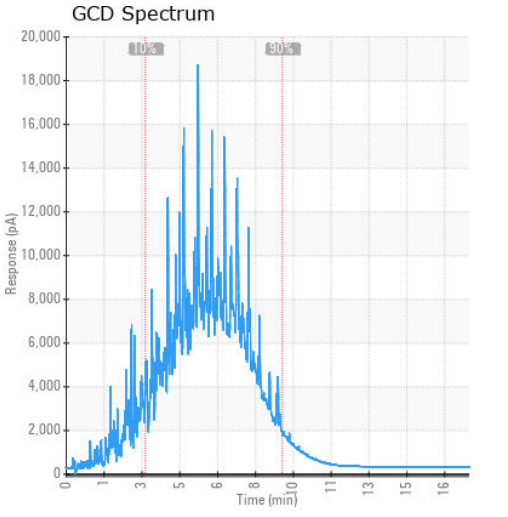
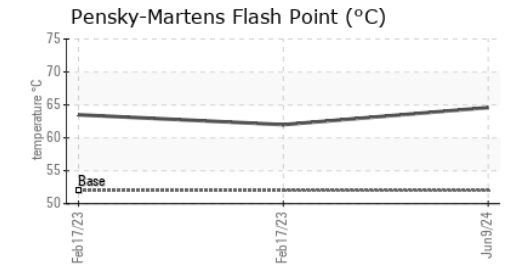
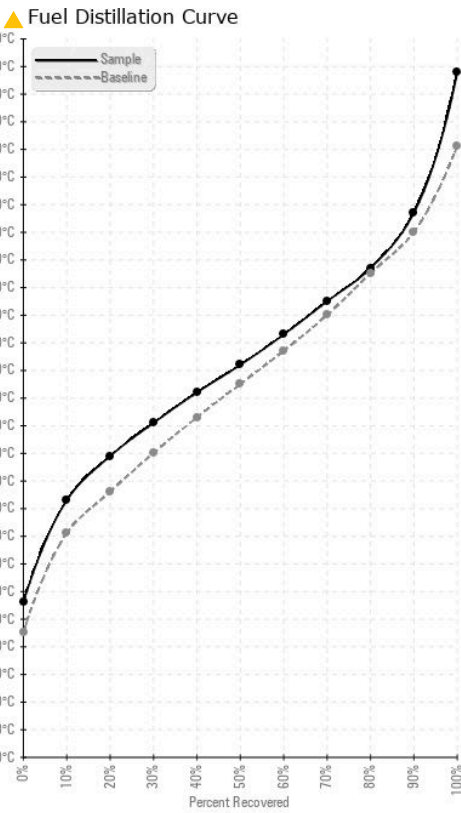
FUEL REPORT



HEAVY METALS	method	limit/base	current	history1	history2
Aluminum	ppm	ASTM D5185(m)	<0.1	0	0
Nickel	ppm	ASTM D5185(m)	<0.1	0	0
Lead	ppm	ASTM D5185(m)	<0.1	0	0
Vanadium	ppm	ASTM D5185(m)	<0.1	0	0
Iron	ppm	ASTM D5185(m)	<0.1	<1	<1
Calcium	ppm	ASTM D5185(m)	<0.1	<1	<1
Magnesium	ppm	ASTM D5185(m)	<0.1	0	0
Phosphorus	ppm	ASTM D5185(m)	<0.1	<1	<1
Zinc	ppm	ASTM D5185(m)	<0.1	<1	<1

SAMPLE IMAGES	method	limit/base	current	history1	history2
Color					
Bottom					

GRAPHS



Laboratory : WearCheck - C8-1175 Appleby Line, Burlington, ON L7L 5H9 **CUMMINS CANADA ULC - GENERATOR DIVISION**
Sample No. : CU0023357 **Received** : 10 Jun 2024 **7175 PACIFIC CIRCLE**
Lab Number : 02640931 **Tested** : 13 Jun 2024 **MISSISSAUGA, ON**
Unique Number : 5798470 **Diagnosed** : 13 Jun 2024 - Kevin Marson **CA L5T 2A5**
Test Package : FUEL (Additional Tests: CC Flash, PrtCount) **Contact: Elisia Johnson**
To discuss this sample report, contact Customer Service at 1-800-268-2131. **elisia.johnson@cummins.com**
Test denoted (*) outside scope of accreditation, (m) method modified, (e) tested at external lab. **T: (905)795-0050**
Validity of results and interpretation are based on the sample and information as supplied. **F: (905)795-9252**