

# FUEL REPORT

Sample Rating Trend



**OFF SPEC**



Area  
**UNASSIGNED [6100310779]**  
Machine Id  
**3AKJGND11MDMP5677**  
Component  
**Diesel Fuel**  
Fluid  
 **DIESEL FUEL No. 2 (--- GAL)**

## DIAGNOSIS

### Recommendation

Nous vous recommandons de vérifier tous les endroits par lesquels des contaminants peuvent pénétrer dans le système.

### Contaminants

Les résultats du point de distillation à 20 % sont anormalement bas. Les résultats du point de distillation à 50 %, du point d'ébullition initial et du point de distillation à 10 % sont anormalement bas. Le carburant n'est plus utilisable en raison de la présence de contaminants. **REMARQUE :** L'échantillon s'enflamme immédiatement à proximité de la température ambiante, indiquant la présence d'une substance volatile, très probablement de l'essence.

### Fuel Condition



le carburant ne peut plus être utilisée en raison de la présence de contaminants.

SAMPLE INFORMATION		method	limit/base	current	history1	history2
Sample Number	Client Info			<b>WA0021407</b>	---	---
Sample Date	Client Info			<b>06 Jun 2024</b>	---	---
Machine Age	hrs	Client Info		<b>0</b>	---	---
Sample Status				<b>ABNORMAL</b>	---	---

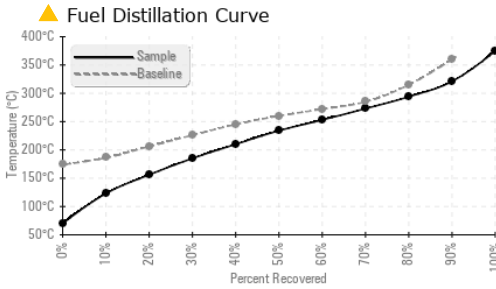
PHYSICAL PROPERTIES		method	limit/base	current	history1	history2
Specific Gravity		ASTM D1298*	0.850	<b>0.815</b>	---	---
Fuel Color	text	Visual Screen*	YELLOW	<b>Yllow</b>	---	---

DISTILLATION		method	limit/base	current	history1	history2
Initial Boiling Point	°C	ASTM D2887*	174	<b>▲ 70</b>	---	---
5% Distillation Point	°C	ASTM D2887*		<b>100</b>	---	---
10% Distill Point	°C	ASTM D2887*	186	<b>▲ 123</b>	---	---
15% Distillation Point	°C	ASTM D2887*		<b>139</b>	---	---
20% Distill Point	°C	ASTM D2887*	206	<b>▲ 156</b>	---	---
30% Distill Point	°C	ASTM D2887*	226	<b>185</b>	---	---
40% Distill Point	°C	ASTM D2887*	245	<b>210</b>	---	---
50% Distill Point	°C	ASTM D2887*	260	<b>234</b>	---	---
60% Distill Point	°C	ASTM D2887*	272	<b>253</b>	---	---
70% Distill Point	°C	ASTM D2887*	285	<b>273</b>	---	---
80% Distill Point	°C	ASTM D2887*	315	<b>294</b>	---	---
85% Distillation Point	°C	ASTM D2887*		<b>307</b>	---	---
90% Distill Point	°C	ASTM D2887*	360	<b>321</b>	---	---
95% Distillation Point	°C	ASTM D2887*		<b>343</b>	---	---
Final Boiling Point	°C	ASTM D2887*	>360	<b>375</b>	---	---

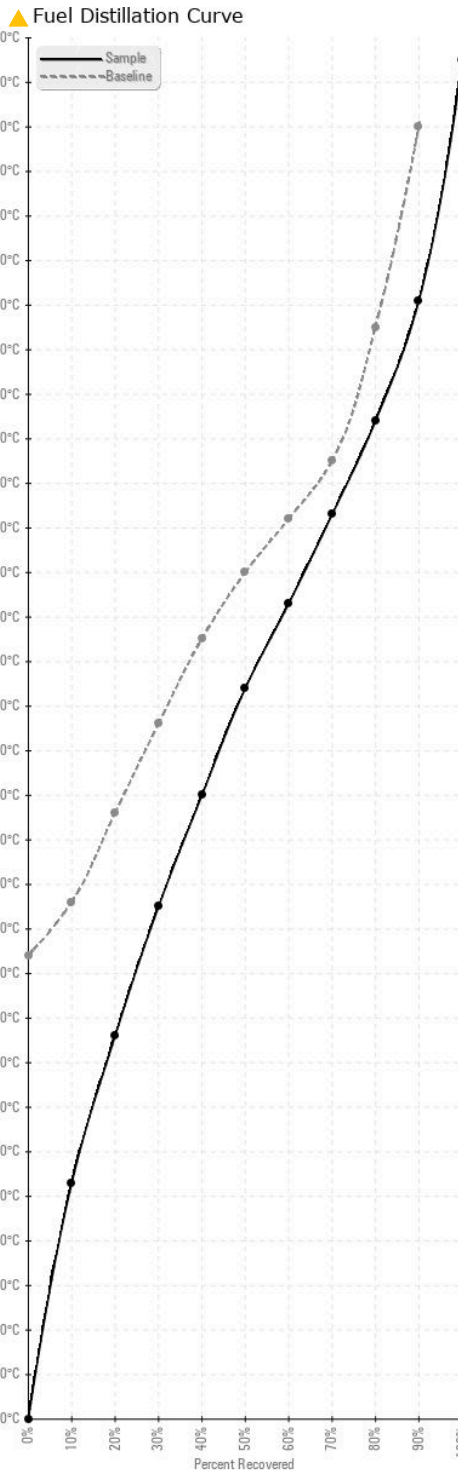
IGNITION QUALITY		method	limit/base	current	history1	history2
API Gravity		ASTM D1298*	35.0	<b>42</b>	---	---
Cetane Index		ASTM D4737*	<40.0	<b>49</b>	---	---

SAMPLE IMAGES		method	limit/base	current	history1	history2
Color					no image	no image
Bottom					no image	no image

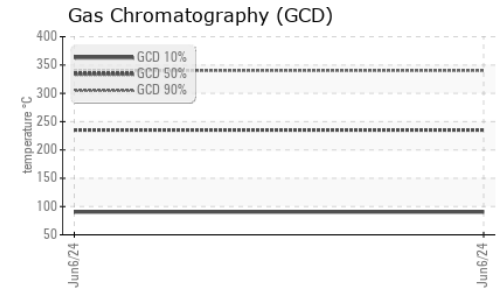
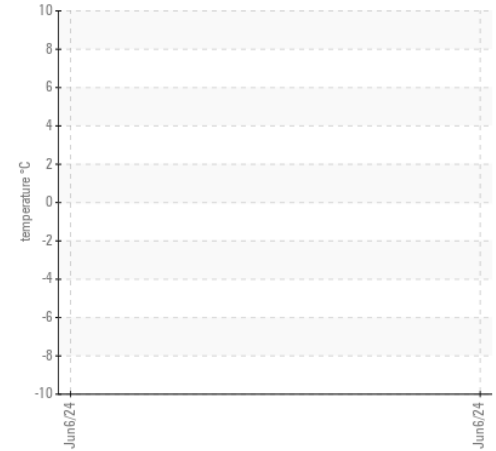
# FUEL REPORT



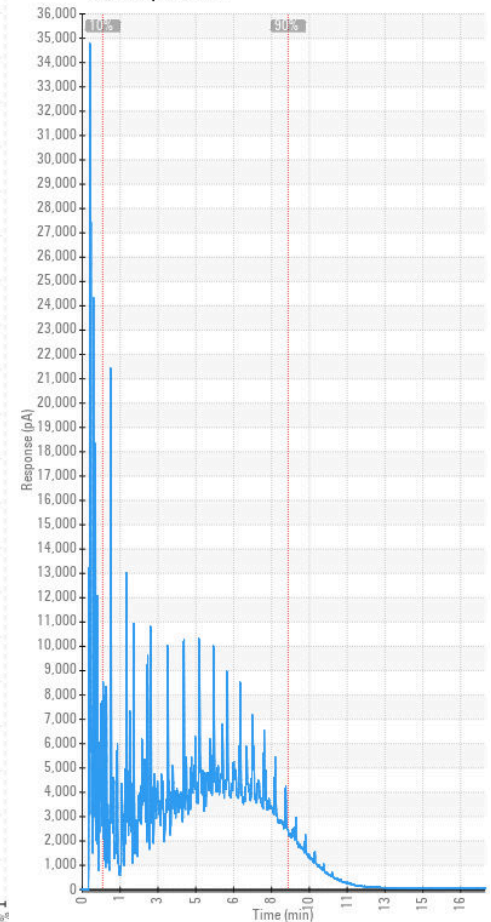
## GRAPHS



## Pensky-Martens Flash Point (°C)



## GCD Spectrum



**Laboratory** : WearCheck - C8-1175 Appleby Line, Burlington, ON L7L 5H9  
**Sample No.** : WA0021407  
**Lab Number** : 02640954  
**Unique Number** : 5798493  
**Test Package** : TEST ( Additional Tests: API, CC Flash, Cetane, Fuel, GCD, SpecGravity )

**Received** : 10 Jun 2024  
**Tested** : 13 Jun 2024  
**Diagnosed** : 13 Jun 2024 - Kevin Marson

To discuss this sample report, contact Customer Service at 1-800-268-2131.  
 Test denoted (\*) outside scope of accreditation, (m) method modified, (e) tested at external lab.  
 Validity of results and interpretation are based on the sample and information as supplied.

**Wajax Limited**  
 2997 AV. WATT  
 Quebec, QC  
 CA G1X 3W1  
 Contact: Steve Racine  
 sracine@wajax.com

T:  
 F: (418)651-4448