

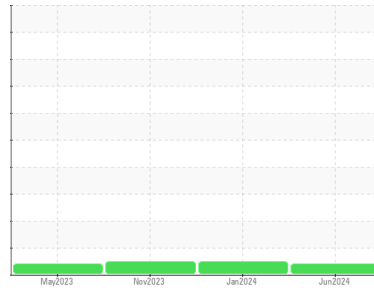


OIL ANALYSIS REPORT



Machine Id
CATERPILLAR 930K LDR006
 Component
Rear Differential
 Fluid
MOBIL TO 4-30 (--- GAL)

Sample Rating Trend



VISCOSITY



DIAGNOSIS

▲ Recommendation

Resample at the next service interval to monitor. The fluid was specified as MOBIL TO 4-30, however, a fluid match indicates that this fluid is SAE 10W Transmission/Drive Train Oil. Please confirm the oil type and grade on your next sample.

Wear

All component wear rates are normal.

Contamination

There is no indication of any contamination in the oil.

▲ Fluid Condition

Viscosity of sample indicates oil is within SAE 10W range, advise investigate. The condition of the oil is acceptable for the time in service.

SAMPLE INFORMATION

	method	limit/base	current	history1	history2
Sample Number	Client Info		WC0947181	WC0892481	WC0879734
Sample Date	Client Info		10 Jun 2024	19 Jan 2024	27 Nov 2023
Machine Age	hrs	Client Info	13555	13049	12703
Oil Age	hrs	Client Info	0	0	0
Oil Changed	Client Info		Not Changed	Changed	Not Changed
Sample Status			ABNORMAL	NORMAL	NORMAL

CONTAMINATION

	method	limit/base	current	history1	history2
Water	WC Method	>.2	NEG	NEG	NEG

WEAR METALS

	method	limit/base	current	history1	history2	
Iron	ppm	ASTM D5185(m)	>500	5	19	11
Chromium	ppm	ASTM D5185(m)	>3	0	0	0
Nickel	ppm	ASTM D5185(m)	>3	0	<1	0
Titanium	ppm	ASTM D5185(m)	>2	0	0	0
Silver	ppm	ASTM D5185(m)	>2	0	0	<1
Aluminum	ppm	ASTM D5185(m)	>30	2	2	2
Lead	ppm	ASTM D5185(m)	>13	0	0	0
Copper	ppm	ASTM D5185(m)	>103	1	2	2
Tin	ppm	ASTM D5185(m)	>5	0	0	0
Antimony	ppm	ASTM D5185(m)	>5	0	0	0
Vanadium	ppm	ASTM D5185(m)		0	0	0
Beryllium	ppm	ASTM D5185(m)		0	0	0
Cadmium	ppm	ASTM D5185(m)		0	0	0

ADDITIVES

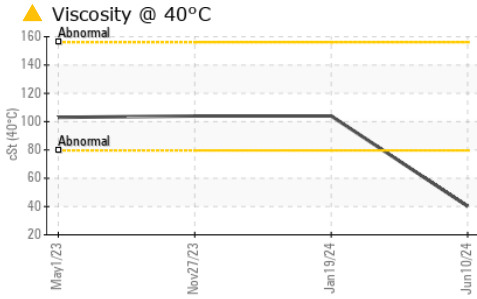
	method	limit/base	current	history1	history2	
Boron	ppm	ASTM D5185(m)		2	3	3
Barium	ppm	ASTM D5185(m)		0	0	<1
Molybdenum	ppm	ASTM D5185(m)		0	0	0
Manganese	ppm	ASTM D5185(m)		0	0	0
Magnesium	ppm	ASTM D5185(m)		13	15	12
Calcium	ppm	ASTM D5185(m)		3489	3135	3095
Phosphorus	ppm	ASTM D5185(m)		1147	1068	1066
Zinc	ppm	ASTM D5185(m)		1080	1237	1251
Sulfur	ppm	ASTM D5185(m)		6100	6110	5996
Lithium	ppm	ASTM D5185(m)		<1	<1	<1

CONTAMINANTS

	method	limit/base	current	history1	history2	
Silicon	ppm	ASTM D5185(m)	>100	12	10	7
Sodium	ppm	ASTM D5185(m)		<1	1	1
Potassium	ppm	ASTM D5185(m)	>20	<1	1	0



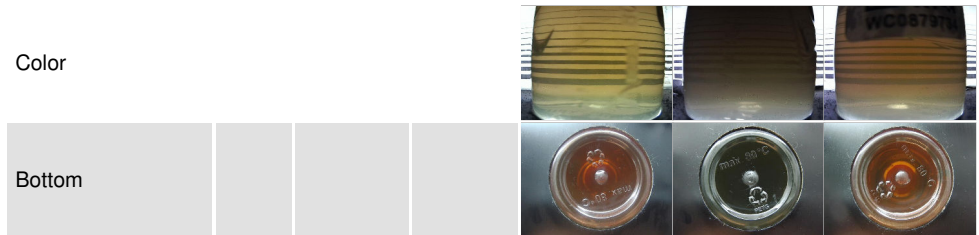
OIL ANALYSIS REPORT



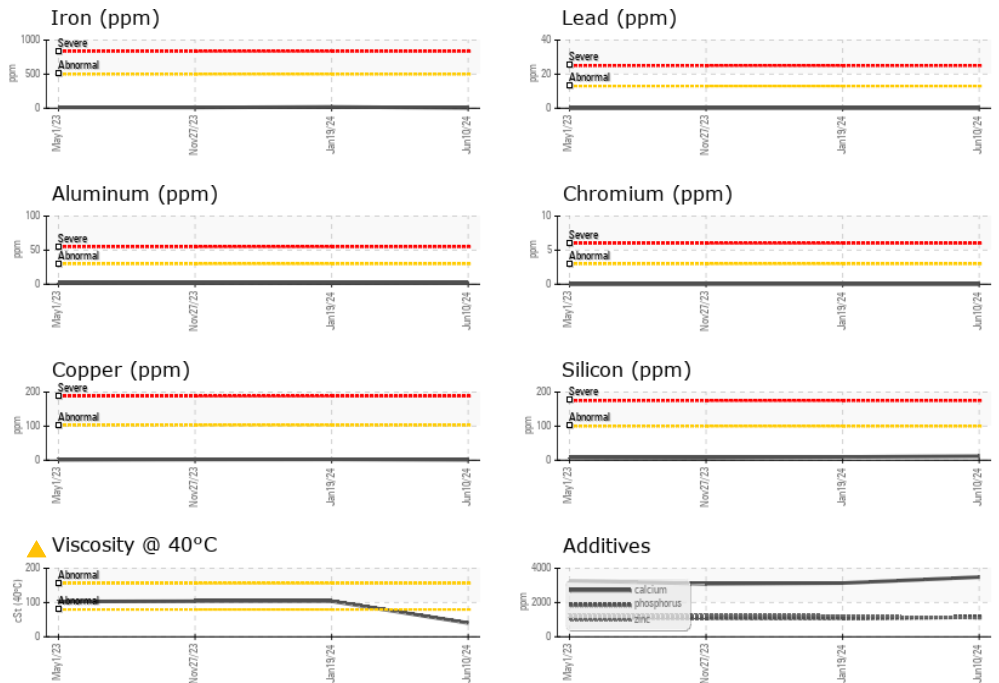
VISUAL	method	limit/base	current	history1	history2
White Metal	scalar	Visual*	NONE	NONE	NONE
Yellow Metal	scalar	Visual*	NONE	NONE	NONE
Precipitate	scalar	Visual*	NONE	NONE	NONE
Silt	scalar	Visual*	NONE	NONE	NONE
Debris	scalar	Visual*	NONE	NONE	NONE
Sand/Dirt	scalar	Visual*	NONE	NONE	NONE
Appearance	scalar	Visual*	NORML	NORML	NORML
Odor	scalar	Visual*	NORML	NORML	NORML
Emulsified Water	scalar	Visual*	>.2	NEG	NEG
Free Water	scalar	Visual*		NEG	NEG

FLUID PROPERTIES	method	limit/base	current	history1	history2
Visc @ 40°C	cSt	ASTM D7279(m)	▲ 40.2	104	104

SAMPLE IMAGES	method	limit/base	current	history1	history2
---------------	--------	------------	---------	----------	----------



GRAPHS



Laboratory : WearCheck - C8-1175 Appleby Line, Burlington, ON L7L 5H9
Sample No. : WC0947181
Lab Number : 02641808
Unique Number : 5799347
Test Package : MOB 1

Agnico Eagle Canada
 1350 Government Rd. W, MACASSA COMPLEX
 Kirkland Lake, ON
 CA P2N 3J1
 Contact: Mitch Lamontagne
 AEM_KL_macassaoilsamplesresults@agnicoeagle.com
 T: (705)567-5208
 F: (705)567-5221

To discuss this sample report, contact Customer Service at 1-800-268-2131.
 Test denoted (*) outside scope of accreditation, (m) method modified, (e) tested at external lab.
 Validity of results and interpretation are based on the sample and information as supplied.