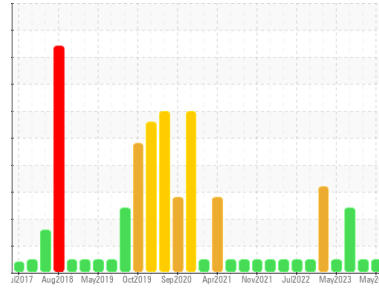




# OIL ANALYSIS REPORT

Sample Rating Trend



**NORMAL**



Area

**Materials Handling/SE Pedestal Crane**  
Machine Id  
**WPD471261 CRANE PEDESTAL SOUTH EAST**

Component

**Luffing Drive**

Fluid

**MOBIL MOBILUBE HD 80W90 (--- GAL)**

## DIAGNOSIS

### Recommendation

Resample at the next service interval to monitor.  
NOTE: Please provide information regarding reservoir capacity, filter type and micron rating with next sample.

### Wear

All component wear rates are normal.

### Contamination

There is no indication of any contamination in the oil.

### Fluid Condition

The AN level is acceptable for this fluid. The condition of the oil is suitable for further service.

## SAMPLE INFORMATION

	method	limit/base	current	history1	history2
Sample Number	Client Info		<b>PP13994631</b>	PP13961812	PP13897520
Sample Date	Client Info		<b>26 May 2024</b>	16 Feb 2024	01 Jul 2023
Machine Age	hrs	Client Info	<b>0</b>	0	0
Oil Age	hrs	Client Info	<b>0</b>	0	0
Oil Changed	Client Info		<b>N/A</b>	N/A	N/A
Sample Status			<b>NORMAL</b>	NORMAL	ABNORMAL

## CONTAMINATION

	method	limit/base	current	history1	history2
Water	WC Method	>0.2	<b>NEG</b>	NEG	NEG

## WEAR METALS

	method	limit/base	current	history1	history2
PQ	ASTM D8184*		<b>0</b>	3	12
Iron	ppm	ASTM D5185(m) >200	<b>4</b>	13	11
Chromium	ppm	ASTM D5185(m) >10	<b>0</b>	0	0
Nickel	ppm	ASTM D5185(m) >10	<b>0</b>	0	<1
Titanium	ppm	ASTM D5185(m)	<b>0</b>	0	0
Silver	ppm	ASTM D5185(m)	<b>0</b>	0	0
Aluminum	ppm	ASTM D5185(m)	<b>0</b>	0	<1
Lead	ppm	ASTM D5185(m)	<b>0</b>	0	0
Copper	ppm	ASTM D5185(m)	<b>&lt;1</b>	0	<1
Tin	ppm	ASTM D5185(m)	<b>0</b>	0	0
Antimony	ppm	ASTM D5185(m) >5	<b>0</b>	0	0
Vanadium	ppm	ASTM D5185(m)	<b>0</b>	0	0
Beryllium	ppm	ASTM D5185(m)	<b>0</b>	0	0
Cadmium	ppm	ASTM D5185(m)	<b>0</b>	0	0

## ADDITIVES

	method	limit/base	current	history1	history2
Boron	ppm	ASTM D5185(m)	<b>173</b>	178	160
Barium	ppm	ASTM D5185(m)	<b>0</b>	0	0
Molybdenum	ppm	ASTM D5185(m)	<b>0</b>	0	0
Manganese	ppm	ASTM D5185(m)	<b>0</b>	0	<1
Magnesium	ppm	ASTM D5185(m)	<b>&lt;1</b>	<1	1
Calcium	ppm	ASTM D5185(m)	<b>10</b>	1	4
Phosphorus	ppm	ASTM D5185(m)	<b>1001</b>	989	1071
Zinc	ppm	ASTM D5185(m)	<b>10</b>	6	42
Sulfur	ppm	ASTM D5185(m)	<b>22676</b>	22659	22104
Lithium	ppm	ASTM D5185(m)	<b>&lt;1</b>	<1	<1

## CONTAMINANTS

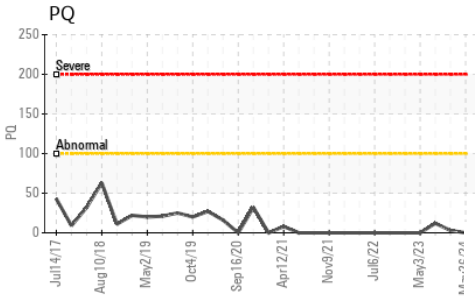
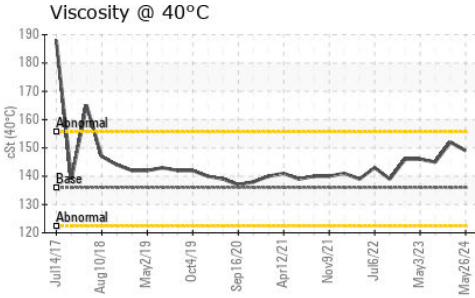
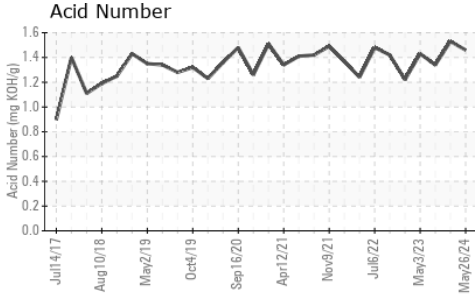
	method	limit/base	current	history1	history2
Silicon	ppm	ASTM D5185(m)	<b>0</b>	0	2
Sodium	ppm	ASTM D5185(m)	<b>3</b>	<1	2
Potassium	ppm	ASTM D5185(m) >20	<b>6</b>	<1	<1

## FLUID DEGRADATION

	method	limit/base	current	history1	history2
Acid Number (AN)	mg KOH/g	ASTM D974*	<b>1.46</b>	1.53	1.34



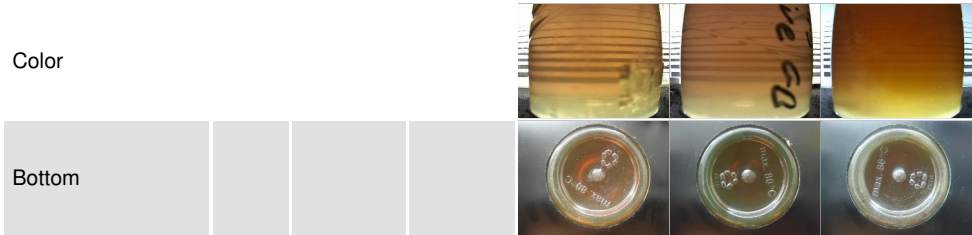
# OIL ANALYSIS REPORT



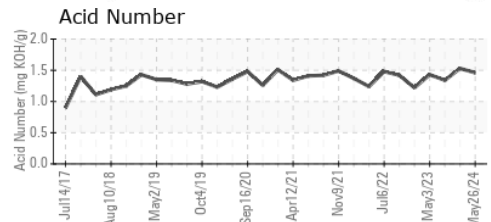
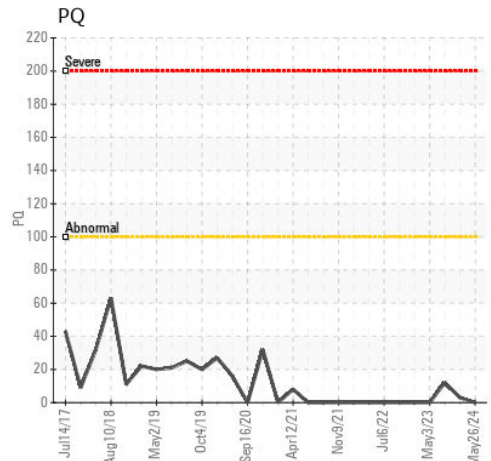
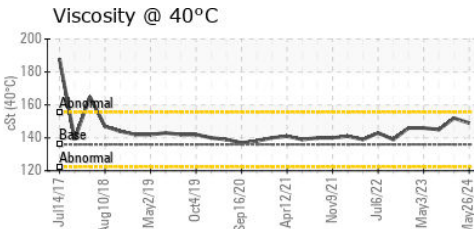
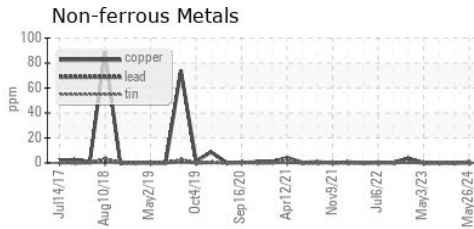
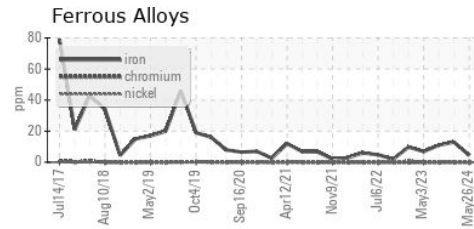
VISUAL	method	limit/base	current	history1	history2	
White Metal	scalar	Visual*	NONE	VLITE	NONE	VLITE
Yellow Metal	scalar	Visual*	NONE	NONE	NONE	NONE
Precipitate	scalar	Visual*	NONE	NONE	NONE	NONE
Silt	scalar	Visual*	NONE	NONE	NONE	NONE
Debris	scalar	Visual*	NONE	NONE	VLITE	NONE
Sand/Dirt	scalar	Visual*	NONE	NONE	NONE	VLITE
Appearance	scalar	Visual*	NORML	NORML	NORML	▲ WGOIL
Odor	scalar	Visual*	NORML	NORML	NORML	NORML
Emulsified Water	scalar	Visual*	>0.2	NEG	NEG	.2%
Free Water	scalar	Visual*		NEG	NEG	▲ 1%

FLUID PROPERTIES	method	limit/base	current	history1	history2	
Visc @ 40°C	cSt	ASTM D7279(m)	136	149	152	145

SAMPLE IMAGES	method	limit/base	current	history1	history2
---------------	--------	------------	---------	----------	----------



## GRAPHS



**Laboratory** : WearCheck - C8-1175 Appleby Line, Burlington, ON L7L 5H9  
**Sample No.** : PP13994631 **Received** : 13 Jun 2024  
**Lab Number** : 02641827 **Tested** : 14 Jun 2024  
**Unique Number** : 5799366 **Diagnosed** : 14 Jun 2024 - Wes Davis  
**Test Package** : MAR 2 ( Additional Tests: TAN Man )

**ExxonMobil Canada East Ltd.**  
 Hebron-Materials and Repair Coordin, Suite 1000, 100 New Gow  
 St. John's, NL  
 CA A1C 6K3  
 Contact: Liam Maher  
 liam.m.maher@exxonmobil.com  
 T: (709)273-3729  
 F:

To discuss this sample report, contact Customer Service at 1-800-268-2131.  
 Test denoted (\*) outside scope of accreditation, (m) method modified, (e) tested at external lab.  
 Validity of results and interpretation are based on the sample and information as supplied.