

# FUEL REPORT

Sample Rating Trend



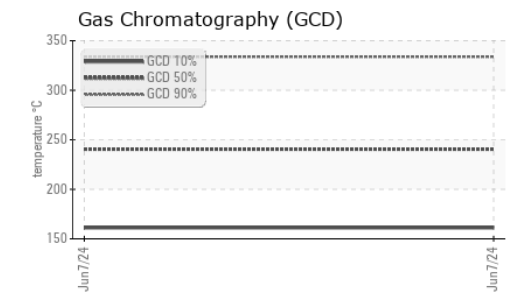
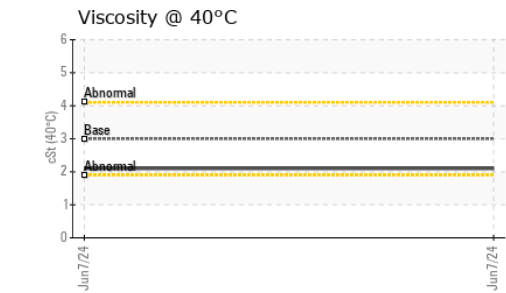
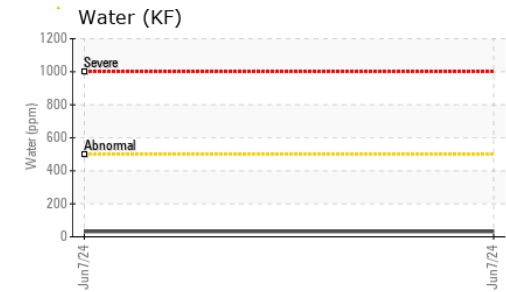
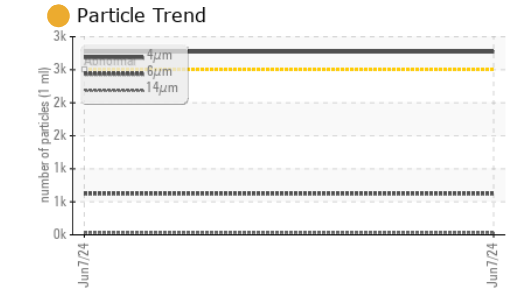
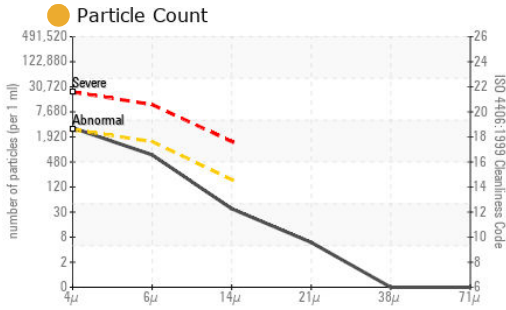
**OFF SPEC**



Area  
**JOYGLOBAL [6100263355]**  
Machine Id  
**5272000450**  
Component  
**Diesel Fuel**  
Fluid  
**No.2 DIESEL FUEL (ULTRALOW SULPHUR) (--- GAL)**

DIAGNOSIS		SAMPLE INFORMATION		method	limit/base	current	history1	history2
Sample Number		Client Info				<b>WA0021134</b>	---	---
Sample Date		Client Info				<b>07 Jun 2024</b>	---	---
Machine Age	hrs	Client Info				<b>0</b>	---	---
Sample Status						<b>ABNORMAL</b>	---	---
PHYSICAL PROPERTIES		method	limit/base	current	history1	history2		
Specific Gravity		ASTM D1298*	0.839	<b>0.832</b>	---	---		
Fuel Color	text	Visual Screen*	Yllow	<b>Pink</b>	---	---		
Visc @ 40°C	cSt	ASTM D7279(m)	3.0	<b>2.1</b>	---	---		
Pensky-Martens Flash Point	°C	ASTM D7215*	52	<b>▲ 45</b>	---	---		
SULFUR CONTENT		method	limit/base	current	history1	history2		
Sulfur	ppm	ASTM D5185(m)	10	<b>12</b>	---	---		
DISTILLATION		method	limit/base	current	history1	history2		
Initial Boiling Point	°C	ASTM D2887*	165	<b>▲ 154</b>	---	---		
5% Distillation Point	°C	ASTM D2887*		<b>174</b>	---	---		
10% Distill Point	°C	ASTM D2887*	201	<b>182</b>	---	---		
15% Distillation Point	°C	ASTM D2887*		<b>190</b>	---	---		
20% Distill Point	°C	ASTM D2887*	216	<b>198</b>	---	---		
30% Distill Point	°C	ASTM D2887*	230	<b>211</b>	---	---		
40% Distill Point	°C	ASTM D2887*	243	<b>225</b>	---	---		
50% Distill Point	°C	ASTM D2887*	255	<b>239</b>	---	---		
60% Distill Point	°C	ASTM D2887*	267	<b>255</b>	---	---		
70% Distill Point	°C	ASTM D2887*	280	<b>270</b>	---	---		
80% Distill Point	°C	ASTM D2887*	295	<b>289</b>	---	---		
85% Distillation Point	°C	ASTM D2887*		<b>302</b>	---	---		
90% Distill Point	°C	ASTM D2887*	310	<b>316</b>	---	---		
95% Distillation Point	°C	ASTM D2887*		<b>338</b>	---	---		
Final Boiling Point	°C	ASTM D2887*	341	<b>372</b>	---	---		
IGNITION QUALITY		method	limit/base	current	history1	history2		
API Gravity		ASTM D1298*	37.7	<b>38</b>	---	---		
Cetane Index		ASTM D4737*	<40.0	<b>46</b>	---	---		
CONTAMINANTS		method	limit/base	current	history1	history2		
Silicon	ppm	ASTM D5185(m)	<1.0	<b>0</b>	---	---		
Sodium	ppm	ASTM D5185(m)	<0.1	<b>&lt;1</b>	---	---		
Potassium	ppm	ASTM D5185(m)	<0.1	<b>0</b>	---	---		
Water	%	ASTM D6304*	<0.05	<b>0.003</b>	---	---		
ppm Water	ppm	ASTM D6304*	<500	<b>32</b>	---	---		
FLUID CLEANLINESS		method	limit/base	current	history1	history2		
Particles >4µm		ASTM D7647	>2500	<b>● 2771</b>	---	---		
Particles >6µm		ASTM D7647	>1300	<b>624</b>	---	---		
Particles >14µm		ASTM D7647	>160	<b>32</b>	---	---		
Particles >21µm		ASTM D7647	>40	<b>5</b>	---	---		
Particles >38µm		ASTM D7647	>10	<b>0</b>	---	---		
Particles >71µm		ASTM D7647	>3	<b>0</b>	---	---		
Oil Cleanliness		ISO 4406 (c)	>18/17/14	<b>● 19/16/12</b>	---	---		

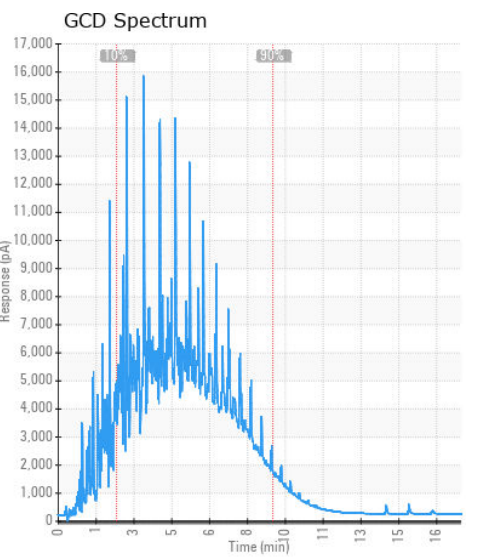
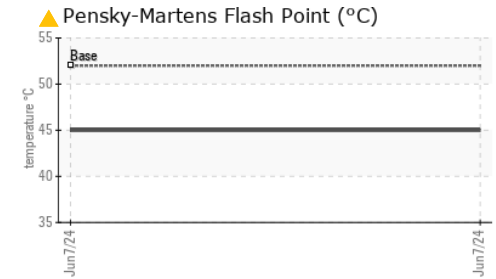
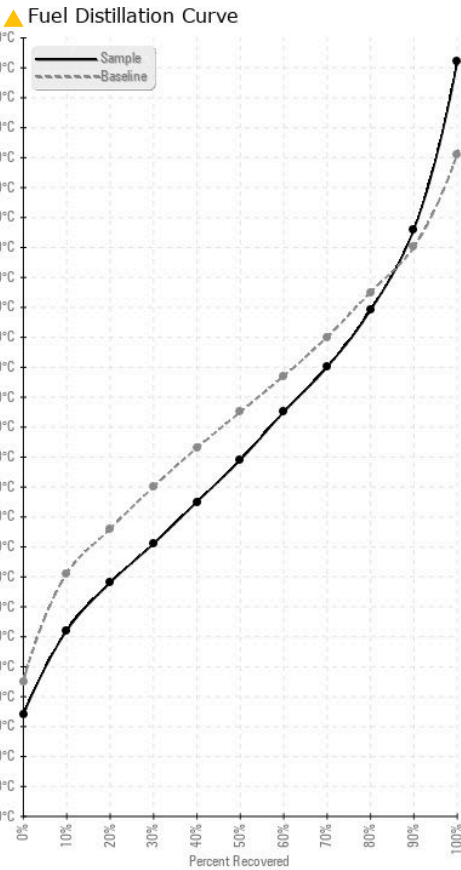
# FUEL REPORT



HEAVY METALS	method	limit/base	current	history1	history2
Aluminum	ppm	ASTM D5185(m)	<0.1	0	---
Nickel	ppm	ASTM D5185(m)	<0.1	0	---
Lead	ppm	ASTM D5185(m)	<1	---	---
Vanadium	ppm	ASTM D5185(m)	<0.1	0	---
Iron	ppm	ASTM D5185(m)	<0.1	0	---
Calcium	ppm	ASTM D5185(m)	<0.1	<1	---
Magnesium	ppm	ASTM D5185(m)	<0.1	0	---
Phosphorus	ppm	ASTM D5185(m)	<0.1	<1	---
Zinc	ppm	ASTM D5185(m)	<0.1	<1	---

SAMPLE IMAGES	method	limit/base	current	history1	history2
Color				no image	no image
Bottom				no image	no image

## GRAPHS



**Laboratory** : WearCheck - C8-1175 Appleby Line, Burlington, ON L7L 5H9  
**Sample No.** : WA0021134 **Received** : 13 Jun 2024  
**Lab Number** : 02641869 **Tested** : 19 Jun 2024  
**Unique Number** : 5799408 **Diagnosed** : 19 Jun 2024 - Kevin Marson  
**Test Package** : FUEL ( Additional Tests: CC Flash, PrtCount )

To discuss this sample report, contact Customer Service at 1-800-268-2131.  
 Test denoted (\*) outside scope of accreditation, (m) method modified, (e) tested at external lab.  
 Validity of results and interpretation are based on the sample and information as supplied.

**Wajax Limited**  
 2997 AV. WATT  
 Quebec, QC  
 CA G1X 3W1  
 Contact: Steve Racine  
 sracine@wajax.com  
 T:  
 F: (418)651-4448