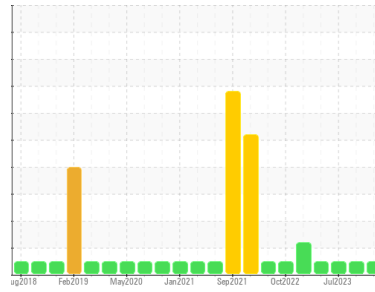




# GREASE ANALYSIS

Sample Rating Trend



**NORMAL**



Area  
 Machine Id  
**Materials Handling/NE Pedestal Crane**  
**WPD471231 CRANE PEDESTAL NORTH EAST**  
 Component  
**90° Grease**  
 Fluid  
**MOBIL MOBILGREASE XHP 222 (--- GAL)**

## DIAGNOSIS

### Recommendation

Resample at the next service interval to monitor.

### Wear

All component wear rates are normal.

### Grease Condition

The condition of the grease is acceptable for the time in service.

### Contaminants

There is no indication of any contamination in the grease.

## SAMPLE INFORMATION

	method	limit/base	current	history1	history2
Sample Number	Client Info		<b>PP13994630</b>	PP	PP13897519
Sample Date	Client Info		<b>26 May 2024</b>	27 Mar 2024	01 Jul 2023
Machine Age	hrs	Client Info	<b>0</b>	0	0
Grease Age	hrs	Client Info	<b>0</b>	0	0
Grease Serviced	Client Info		<b>N/A</b>	N/A	N/A
Sample Status			<b>NORMAL</b>	NORMAL	NORMAL

## CONTAMINATION

	method	limit/base	current	history1	history2
Water	WC Method	>0.1	<b>NEG</b>	NEG	NEG

## WEAR METALS

	method	limit/base	current	history1	history2
PQ	ASTM D8184*	>200	<b>0</b>	0	15
Iron	ppm	ASTM D5185(m)	>250	<b>9</b>	2
Chromium	ppm	ASTM D5185(m)	>10	<b>0</b>	0
Nickel	ppm	ASTM D5185(m)	>5	<b>0</b>	0
Cadmium	ppm	ASTM D5185(m)		<b>0</b>	0
Titanium	ppm	ASTM D5185(m)		<b>0</b>	0
Vanadium	ppm	ASTM D5185(m)		<b>0</b>	0
Lead	ppm	ASTM D5185(m)	>25	<b>0</b>	0
Copper	ppm	ASTM D5185(m)	>75	<b>&lt;1</b>	<1
Tin	ppm	ASTM D5185(m)	>5	<b>0</b>	0
Silver	ppm	ASTM D5185(m)	>5	<b>0</b>	0

## ADDITIVES

	method	limit/base	current	history1	history2
Boron	ppm	ASTM D5185(m)		<b>10</b>	5
Magnesium	ppm	ASTM D5185(m)		<b>5</b>	1
Manganese	ppm	ASTM D5185(m)		<b>&lt;1</b>	0
Molybdenum	ppm	ASTM D5185(m)		<b>3</b>	2
Phosphorus	ppm	ASTM D5185(m)		<b>114</b>	119
Zinc	ppm	ASTM D5185(m)		<b>205</b>	185
Antimony	ppm	ASTM D5185(m)		<b>10</b>	3

## THICKENER/SOAP

	method	limit/base	current	history1	history2
Aluminum	ppm	ASTM D5185(m)		<b>&lt;1</b>	0
Barium	ppm	ASTM D5185(m)		<b>1</b>	<1
Calcium	ppm	ASTM D5185(m)		<b>18</b>	4
Sodium	ppm	ASTM D5185(m)		<b>32</b>	10
Lithium	ppm	ASTM D5185(m)		<b>215</b>	203
Sulfur	ppm	ASTM D5185(m)		<b>742</b>	782

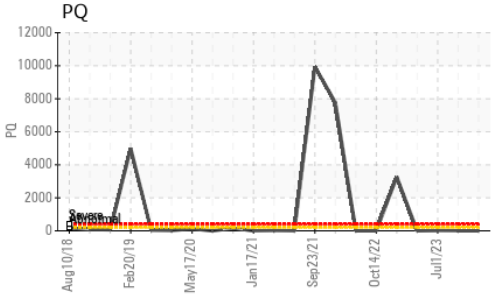
## CONTAMINANTS

	method	limit/base	current	history1	history2
Silicon	ppm	ASTM D5185(m)	>150	<b>0</b>	0
Potassium	ppm	ASTM D5185(m)		<b>2</b>	<1

## GREASE CONDITION

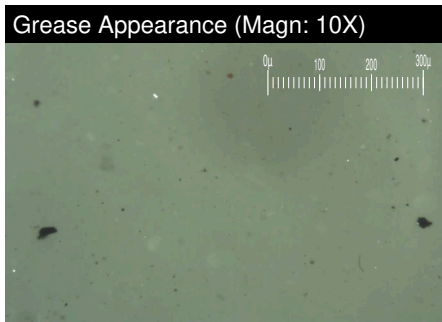
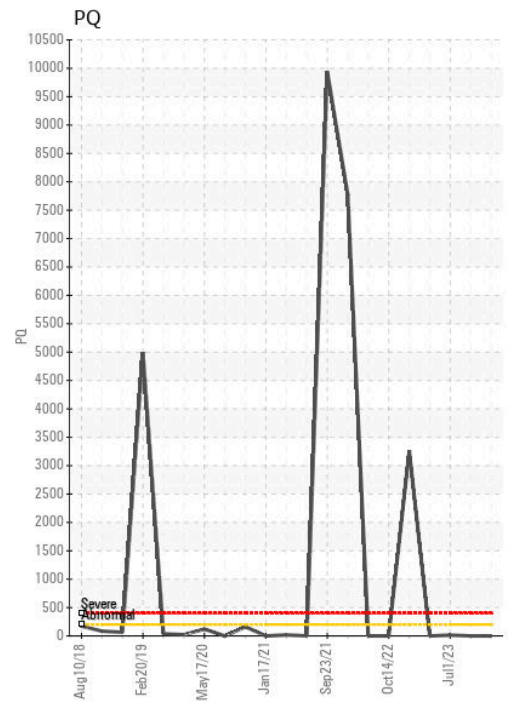
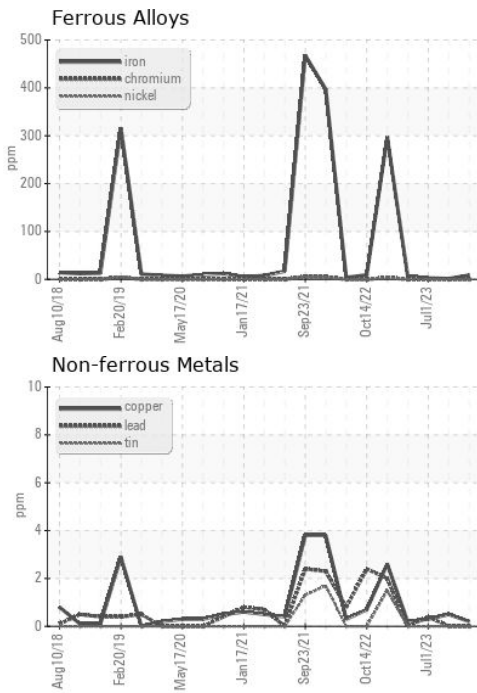
	method	limit/base	current	history1	history2
Grease Color	Visual*	Dk Blue	<b>Green</b>	Green	Green
Texture	In-house*		<b>Buttery</b>	Short fiber	Short fiber
NLGI Consistency	NLGI Scale	SKF Method* 2	<b>2</b>	1-2	2

# GREASE ANALYSIS



SAMPLE IMAGES	method	limit/base	current	history1	history2
Color					
Bottom					
PrtFilter					

## GRAPHS



**CALA**  
ACCREDITED LABORATORY  
 ISO 17025:2017  
 Accredited  
 Laboratory

**Laboratory** : WearCheck - C8-1175 Appleby Line, Burlington, ON L7L 5H9  
**Sample No.** : PP13994630      **Received** : 13 Jun 2024  
**Lab Number** : **02641880**      **Tested** : 18 Jun 2024  
**Unique Number** : 5799419      **Diagnosed** : 18 Jun 2024 - Kevin Marson  
**Test Package** : GRS 1 ( Additional Tests: BottomAnalysis )

**ExxonMobil Canada East Ltd.**  
 Hebron-Materials and Repair Coordin, Suite 1000, 100 New Gow  
 St. John's, NL  
 CA A1C 6K3  
 Contact: Liam Maher  
 liam.m.maher@exxonmobil.com  
 T: (709)273-3729  
 F:

*To discuss this sample report, contact Customer Service at 1-800-268-2131.  
 Test denoted (\*) outside scope of accreditation, (m) method modified, (e) tested at external lab.  
 Validity of results and interpretation are based on the sample and information as supplied.*