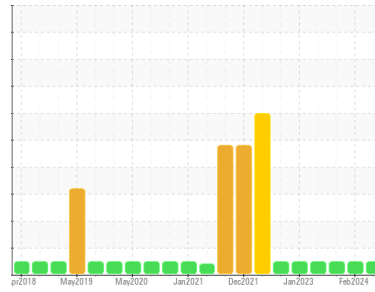




GREASE ANALYSIS

Sample Rating Trend



NORMAL



Area
 Machine Id
Materials Handling/SE Pedestal Crane
WPD471261 CRANE PEDESTAL SOUTH EAST
 Component
90° Grease
 Fluid
MOBIL MOBILGREASE XHP 222 (--- GAL)

DIAGNOSIS

Recommendation

Resample at the next service interval to monitor.

Wear

All component wear rates are normal.

Grease Condition

The condition of the grease is acceptable for the time in service.

Contaminants

There is no indication of any contamination in the grease.

SAMPLE INFORMATION

method	limit/base	current	history1	history2
Sample Number	Client Info	PP13994631	PP	PP13897520
Sample Date	Client Info	26 May 2024	16 Feb 2024	01 Jul 2023
Machine Age	hrs	Client Info	0	0
Grease Age	hrs	Client Info	0	0
Grease Serviced	Client Info	N/A	N/A	N/A
Sample Status		NORMAL	NORMAL	NORMAL

CONTAMINATION

method	limit/base	current	history1	history2	
Water	WC Method	>0.1	NEG	NEG	NEG

WEAR METALS

method	limit/base	current	history1	history2		
PQ	ASTM D8184*	>200	50	80	18	
Iron	ppm	ASTM D5185(m)	>250	9	11	10
Chromium	ppm	ASTM D5185(m)	>10	0	0	0
Nickel	ppm	ASTM D5185(m)	>5	0	0	0
Cadmium	ppm	ASTM D5185(m)		0	0	0
Titanium	ppm	ASTM D5185(m)		0	0	0
Vanadium	ppm	ASTM D5185(m)		0	0	0
Lead	ppm	ASTM D5185(m)	>25	0	0	0
Copper	ppm	ASTM D5185(m)	>75	<1	<1	<1
Tin	ppm	ASTM D5185(m)	>5	0	0	0
Silver	ppm	ASTM D5185(m)	>5	0	0	0

ADDITIVES

method	limit/base	current	history1	history2		
Boron	ppm	ASTM D5185(m)		11	8	9
Magnesium	ppm	ASTM D5185(m)		2	2	<1
Manganese	ppm	ASTM D5185(m)		0	0	0
Molybdenum	ppm	ASTM D5185(m)		63	41	51
Phosphorus	ppm	ASTM D5185(m)		107	107	111
Zinc	ppm	ASTM D5185(m)		195	218	184
Antimony	ppm	ASTM D5185(m)		8	7	9

THICKENER/SOAP

method	limit/base	current	history1	history2		
Aluminum	ppm	ASTM D5185(m)		0	<1	<1
Barium	ppm	ASTM D5185(m)		<1	<1	<1
Calcium	ppm	ASTM D5185(m)		16	25	16
Sodium	ppm	ASTM D5185(m)		14	13	5
Lithium	ppm	ASTM D5185(m)		230	206	204
Sulfur	ppm	ASTM D5185(m)		753	827	718

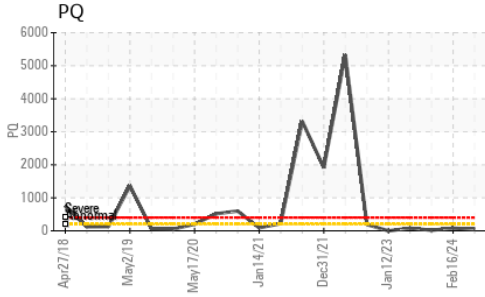
CONTAMINANTS

method	limit/base	current	history1	history2		
Silicon	ppm	ASTM D5185(m)	>150	0	0	<1
Potassium	ppm	ASTM D5185(m)		<1	<1	<1

GREASE CONDITION

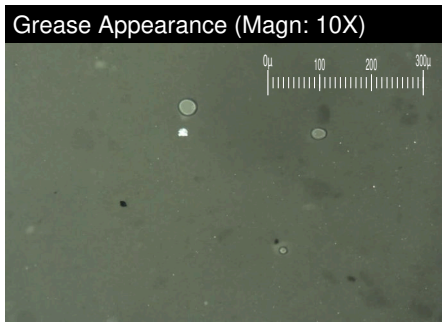
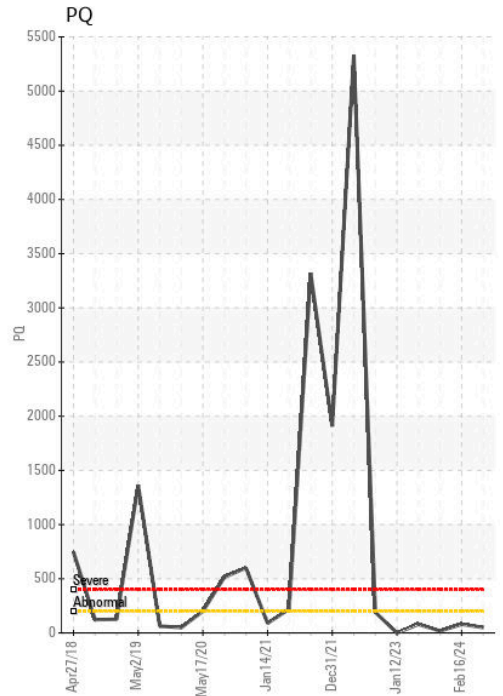
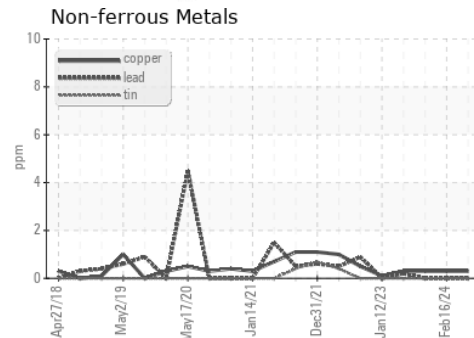
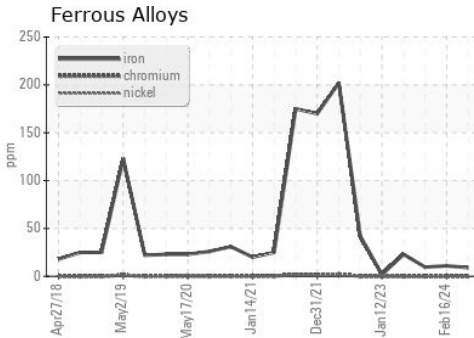
method	limit/base	current	history1	history2		
Grease Color	Visual*	Dk Blue	Green	Green	Green	
Texture	In-house*		Buttery	Short fiber	Short fiber	
NLGI Consistency	NLGI Scale	SKF Method*	2	2	1-2	2

GREASE ANALYSIS



SAMPLE IMAGES	method	limit/base	current	history1	history2
Color					
Bottom					
PrtFilter					

GRAPHS



Laboratory : WearCheck - C8-1175 Appleby Line, Burlington, ON L7L 5H9
Sample No. : PP13994631 **Received** : 13 Jun 2024
Lab Number : **02641885** **Tested** : 24 Jun 2024
Unique Number : 5799424 **Diagnosed** : 24 Jun 2024 - Bill Quesnel
Test Package : GRS 1 (Additional Tests: BottomAnalysis)

ExxonMobil Canada East Ltd.
 Hebron-Materials and Repair Coordin, Suite 1000, 100 New Gow
 St. John`s, NL
 CA A1C 6K3
 Contact: Liam Maher
 liam.m.maher@exxonmobil.com
 T: (709)273-3729
 F:

To discuss this sample report, contact Customer Service at 1-800-268-2131.
 Test denoted (*) outside scope of accreditation, (m) method modified, (e) tested at external lab.
 Validity of results and interpretation are based on the sample and information as supplied.