



# FILTER DEBRIS ANALYSIS

## Sample Rating Trend



**NORMAL**



Machine Id  
**LAND ROVER 24090**

Component  
**Filter**  
 Fluid  
 {not provided} (--- GAL)

### DIAGNOSIS

#### Recommendation

We understand that this sample is for warranty/insurance purposes. Diagnostician's Note: There were a slightly abnormal quantity of ferrous sliding wear particles present in the filter. The particles showed no signs of tempering (lack of lubrication). There were no abnormal contaminants present in the filter.

#### Wear Particles

The filter contained a light concentration of ferrous sliding wear particles. All other component wear rates are normal.

#### Contaminants

The filter contained only normal levels of contaminants, and debris. All filter contaminant levels are normal.

SAMPLE INFORMATION		method	limit/base	current	history1	history2
Sample Number	Client Info			<b>PP0001444</b>	---	---
Sample Date	Client Info			<b>11 Jun 2024</b>	---	---
Machine Age	hrs	Client Info		<b>0</b>	---	---
Oil Age	hrs	Client Info		<b>0</b>	---	---
Oil Changed	Client Info			<b>N/A</b>	---	---
Sample Status				<b>NORMAL</b>	---	---

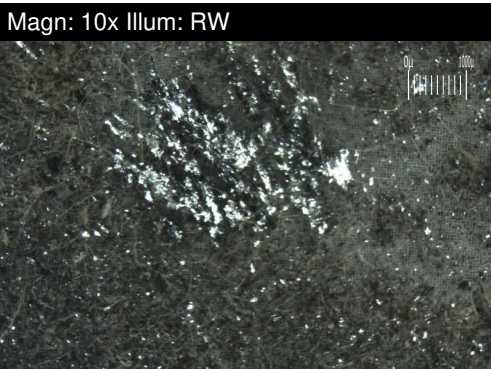
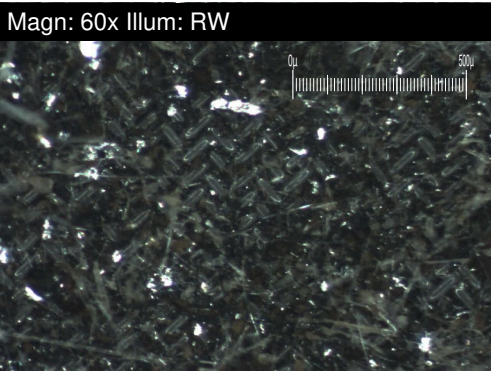
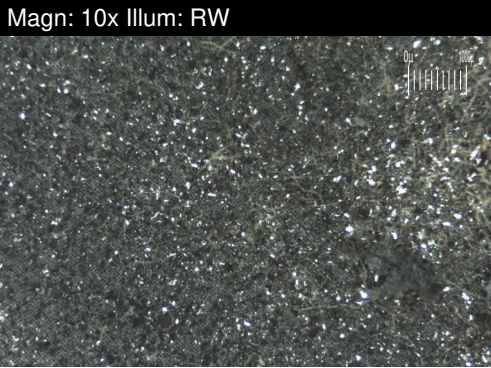
CONTAMINATION		method	limit/base	current	history1	history2
Water	WC Method			<b>NEG</b>	---	---

FILTER WEAR PARTICLES		method	limit/base	current	history1	history2
Ferrous Rubbing	Scale 0-10	ASTM D7684*		<b>2</b>		
Ferrous Sliding	Scale 0-10	ASTM D7684*		<b>2</b>		
Ferrous Cutting	Scale 0-10	ASTM D7684*				
Ferrous Rolling	Scale 0-10	ASTM D7684*		<b>1</b>		
Ferrous Break-in	Scale 0-10	ASTM D7684*				
Ferrous Spheres	Scale 0-10	ASTM D7684*				
Ferrous Black Oxides	Scale 0-10	ASTM D7684*				
Ferrous Red Oxides	Scale 0-10	ASTM D7684*				
Ferrous Corrosive	Scale 0-10	ASTM D7684*				
Ferrous Other	Scale 0-10	ASTM D7684*				
Nonferrous Rubbing	Scale 0-10	ASTM D7684*		<b>2</b>		
Nonferrous Sliding	Scale 0-10	ASTM D7684*				
Nonferrous Cutting	Scale 0-10	ASTM D7684*				
Nonferrous Rolling	Scale 0-10	ASTM D7684*		<b>2</b>		
Nonferrous Other	Scale 0-10	ASTM D7684*				

FILTER CONTAMINANTS		method	limit/base	current	history1	history2
Sand/Dirt	Scale 0-10	ASTM D7684*		<b>2</b>		
Fibres	Scale 0-10	ASTM D7684*		<b>1</b>		
Spheres	Scale 0-10	ASTM D7684*				
Other	Scale 0-10	ASTM D7684*				
Patch Weight	mg	ASTM D7684*		<b>35</b>	---	---

SAMPLE IMAGES		method	limit/base	current	history1	history2
Color					<i>no image</i>	<i>no image</i>
Bottom					<i>no image</i>	<i>no image</i>

Machine Id  
**LAND ROVER 24090**  
Component  
**Filter**  
Fluid  
{not provided} (--- GAL)



**WEAR**

The filter contained a light concentration of ferrous sliding wear particles. All other component wear rates are normal.